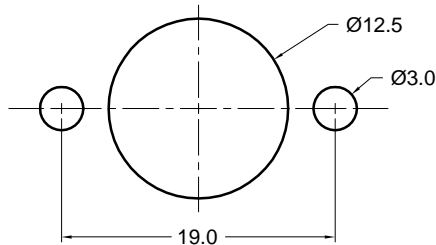
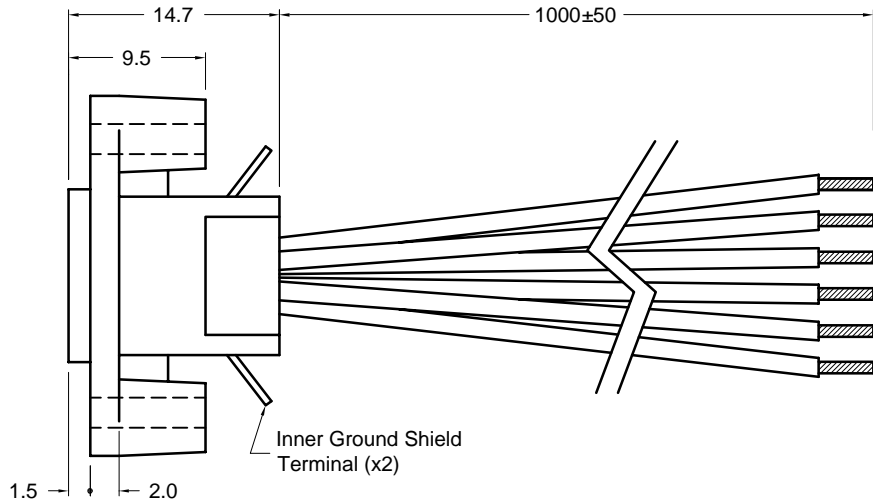


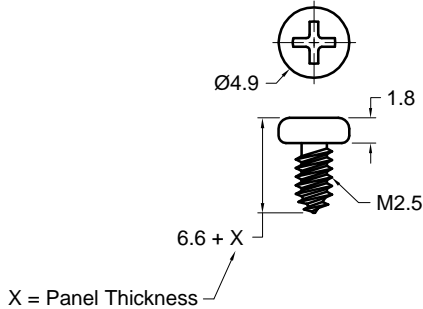
Recommended Panel Cutout



Contact Configuration	
# of Contacts	6
Wire Color	1 Brown 2 White 3 Black 4 Green 5 Yellow 6 Red 7 -- 8 --



Recommended Mounting Screw



Materials and Finish

Shell: steel, tin plated
Contacts: phosphor bronze, tin plated
Insulator: PBT, black
UL94V-0 rated
Wire: 100mm, stripped ends, 26 AWG
Other wire lengths and termination options available, including customer specified headers. Contact Kycon for details.

Specifications

Rating: 12V DC 2amp max.
Insulation Resistance: 50 Megohm min. at 250V DC
Dielectric Strength: 250V AC for 1 minute
Contact Resistance: 30 milliohm max.
Operating Temperature: -25°C to +80°C
Durability Rating: 5000 mating cycles min.
Housing Contact Retention: 3.0 lbs. min.

CSA NRTL/C Certified File No. LR78160

Tolerances
X.X ± 0.25 X.XX ± 0.15 Unless Stated Otherwise

REVISION	DATE	DESCRIPTION	DRAWN BY	REV CHECK BY	UNITS	KMDPL-6S-1000	Panel Mount Female Mini-DIN	
A2	1/30/02	ECO 01-146	K. Wallace	T. Gokcek	mm			
B1	5/16/02	ECO 02-040	REVISED BY	REV CHECK DATE	DATE			
B2	7/2/03	ECO 03-029	C. Leiva	7/2/03	7/21/99		6 Position, Locking Type, prewired	

Mouser Electronics

Authorized Distributor

Click to View Pricing, Inventory, Delivery & Lifecycle Information:

[Kycon:](#)

[KMDPL-6S-1000](#)