

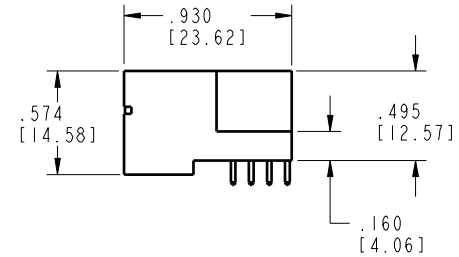
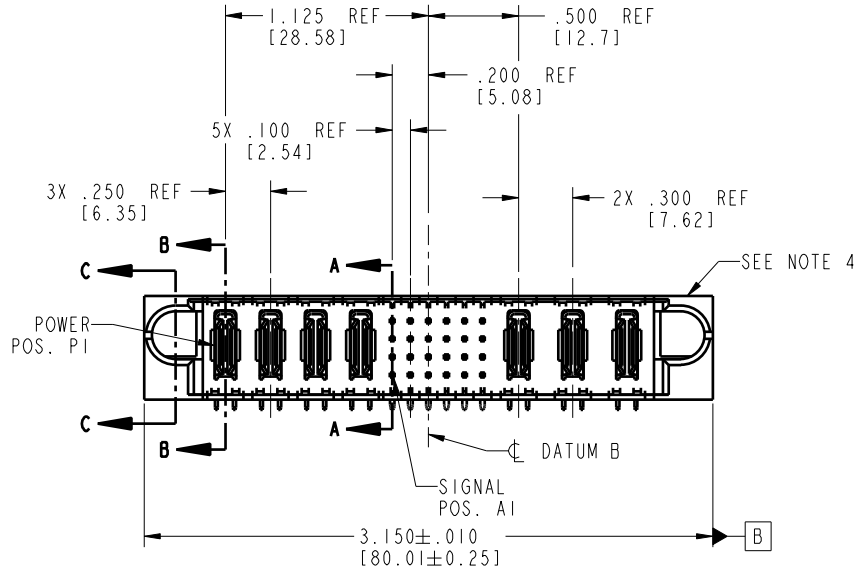
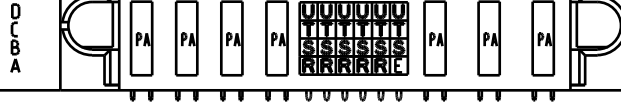
Tous droits strictement réservés. Reproduction ou communication à des tiers interdite sous quelque forme que ce soit sans autorisation écrite du propriétaire. Propriété de c FCI. Droits de reproduction FCI.

A FCI

All rights strictly reserved. Reproduction or issue to third parties in any form whatsoever is not permitted without written authority from the proprietor. Property of FCI. Copyright FCI.

PRODUCT NO.	ROWS	POWER					SIGNAL					POWER			E2
		E1	P1	P2	P3	P4	1	2	3	4	5	6	P5	P6	P7

51939-147--
NOTE 3



CODE	DIM "M" MATING LENGTH	CONTACT TYPE
E	.220 [5.59]	SIGNAL
R	.270 [6.86]	SIGNAL
S	.270 [6.86]	SIGNAL
T	.270 [6.86]	SIGNAL
U	.270 [6.86]	SIGNAL
PA	N/A [N/A]	POWER

mat'l code				tolerances unless otherwise specified		CUSTOMER		A FCI	
lir	ecn no.	dr	date	linear	.XX±.01/0.X±0.3	COPY	projection	title	www.fciconnect.com
A	V04-1107	TAB	11/12/04		.XXX±.005/0.XX±0.13			4P + 24S + 3ACP	
B	DG06-0013	RYAN	01/27/06		.XXX±.002/0.XXX±0.051			RIGHT ANGLE SOLDER HEADER	
				angles	0°±2°			product family	PwrBlade
				dr	T. BRUNGARD 11/12/04	INCH/MM		code	213
				engr	M. GRAY 11/12/04	scale		size	dwg no
				chr	M. GRAY 11/12/04	1:1		A	51939-147
				appd	M. GRAY 11/12/04			sheet	1 of 4
sheet index	revision	B	B	B	B				
	sheet	1	2	3	4				

Pro/E

code code 22526

Tous droits strictement réservés. Reproduction ou communication à des tiers interdite sous quelque forme que ce soit sans autorisation écrite du propriétaire. Propriété de c FCI. Droits de reproduction FCI.

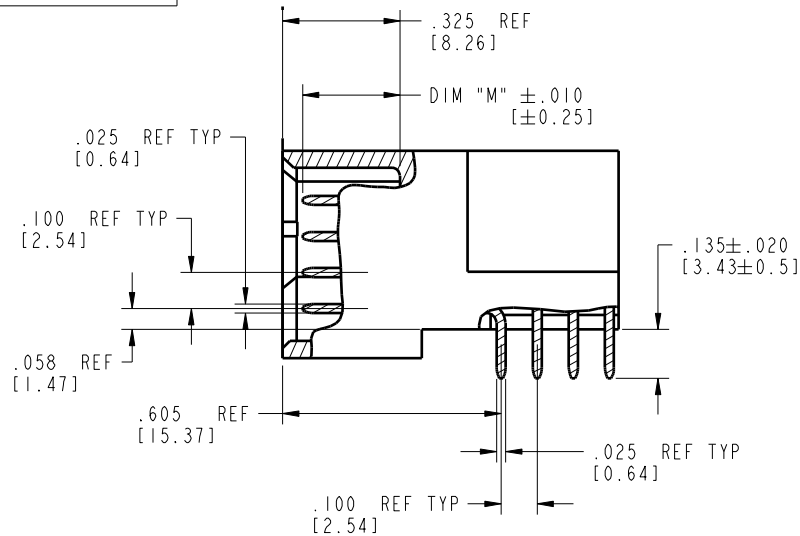
A FCI

All rights strictly reserved. Reproduction or issue to third parties in any form whatever is not permitted without written authority from the proprietor. Property of FCI. Copyright FCI.

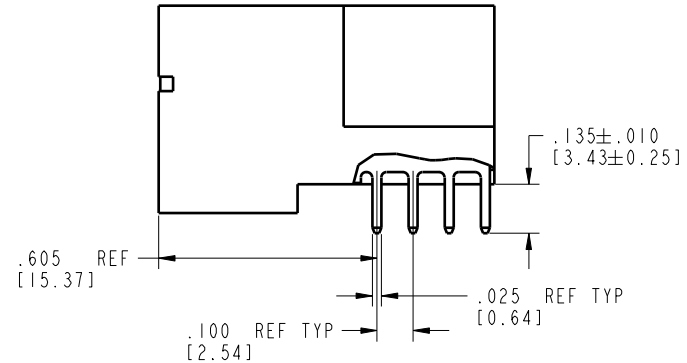
A

B

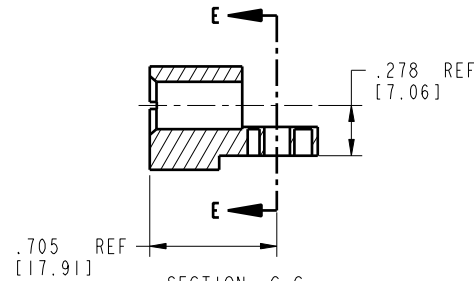
PRODUCT NUMBER
51939-147--
NOTE 3



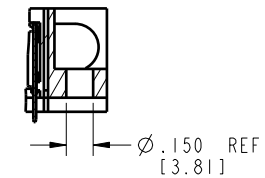
BROKEN-OUT SECTION A-A
SCALE 2:1



BROKEN-OUT SECTION B-B
SCALE 2:1



SECTION C-C



PARTIAL SECTION E-E

mat'l code				SEE NOTE 2		tolerances unless otherwise specified		CUSTOMER		A FCI	
lir	ecn no.	dr	date	linear	angular	linear	angular	projection	projection	title	www.fciconnect.com
B						.XX±.01/0.X±0.3				4P + 24S + 3ACP	
						.XXX±.005/0.XX±0.13				RIGHT ANGLE SOLDER HEADER	
						.XXX±.002/0.XXX±0.051				product family	PwrBlade
				dr		T. BRUNGARD	11/12/04	INCH/MM		size	213
				engr		M. GRAY	11/12/04	scale		dwg no	2 of 4
				chr		M. GRAY	11/12/04	1:1		51939-147	
				appd		M. GRAY	11/12/04				
sheet index	revision	sheet									

Pro/E

code code 22526

Tous droits strictement réservés. Reproduction ou communication à des tiers interdite sous quelque forme que ce soit sans autorisation écrite du propriétaire. Propriété de c FCI. Droits de reproduction FCI.

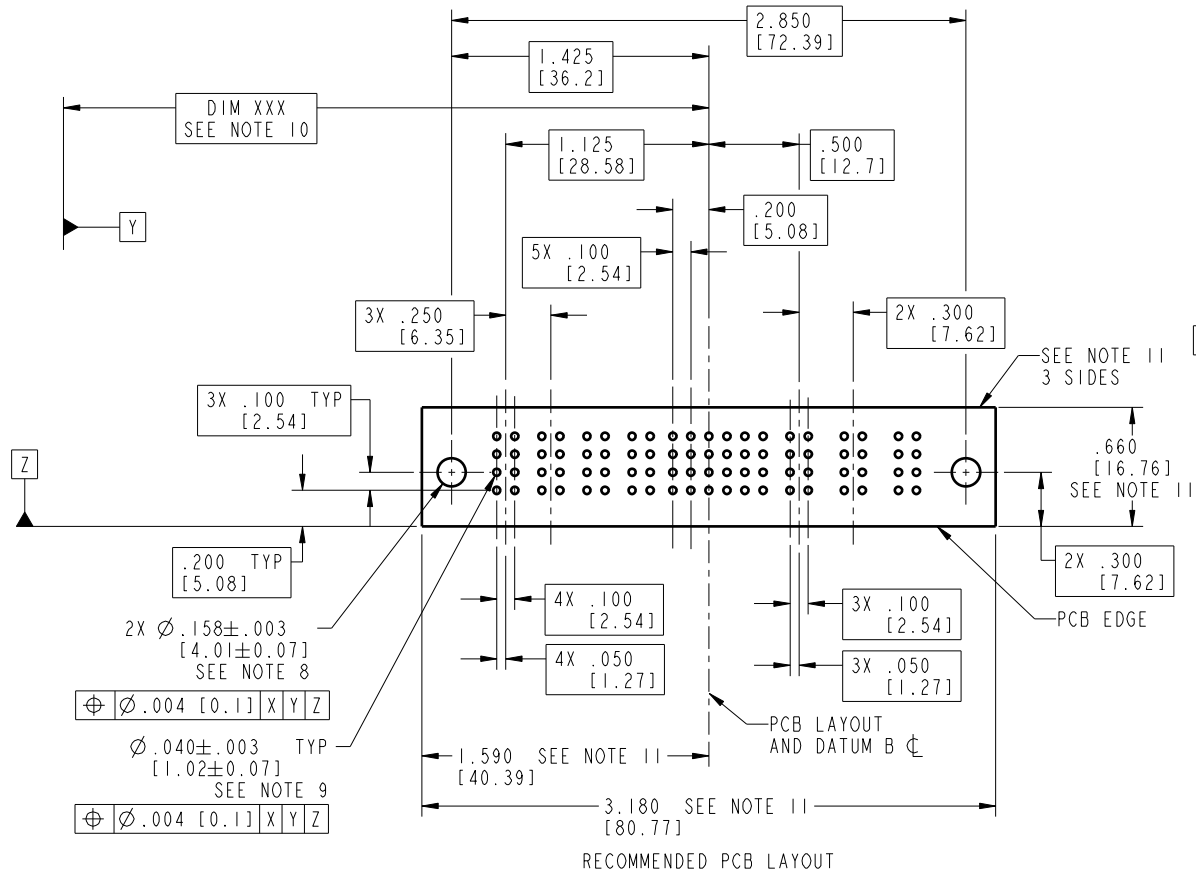
A FCI

All rights strictly reserved. Reproduction or issue to third parties in any form whatever is not permitted without written authority from the proprietor. Property of FCI. Copyright FCI.

A

B

PRODUCT NUMBER
51939-147--
NOTE 3



mat'l code				SEE NOTE 2		tolerances unless otherwise specified		CUSTOMER		A FCI	
lir	ecn no.	dr	date	linear	angular	linear	angular	copy	projection	title	www.fciconnect.com
B						.XX±.01/0.X±0.3				4P + 24S + 3ACP	
						.XXX±.005/0.XX±0.13				RIGHT ANGLE SOLDER HEADER	
						.XXX±.002/0.XXX±0.051				product family	PwrBlade
						0°±2°				size	213
						T. BRUNGARD 11/12/04				dwg no	51939-147
						M. GRAY 11/12/04				sheet	3 of 4
						M. GRAY 11/12/04					
						M. GRAY 11/12/04					
sheet index	revision	sheet									

Pro/E

code code 22526

AFI

A

B

1 | 2

3

4

51939-147--
NOTE 3

1. DIMENSIONS AND TOLERANCES ARE IN ACCORDANCE WITH
ASME Y14.5M, 1994 UNLESS OTHERWISE SPECIFIED.

②. HOUSING MATERIAL: UL 94 V-0 GLASS FILLED
HIGH-TEMP THERMOPLASTIC
POWER CONTACT MATERIAL: COPPER ALLOY
SIGNAL PIN MATERIAL: COPPER ALLOY

3. PLATING:
51939-147; 51939-147LF; 51939-147GLF SEE PRINT 10064183

4. MANUFACTURER'S NAME, P/N, AND DATE CODE TO APPEAR ON THIS SURFACE.

5. PRODUCT SPECIFICATION GS-12-149.
APPLICATION SPECIFICATION BUS-20-067.

6. PACKAGED IN TRAYS.

PCB NOTES:

7. ALL HOLE DIAMETERS ARE FINISHED HOLE SIZE.

- (8.) MOUNTING HOLES, WHERE APPLICABLE, ARE UNPLATED.

9. $\varnothing .0453 \pm .0010$ [1.151 \pm 0.025] DRILLED HOLES PLATED WITH
 $.0003$ [0.008] MIN SnPb OVER $.001$ [0.03]
 TO $.003$ [0.08] Cu PLATING TO ACHIEVE
 $\varnothing .040 \pm .003$ [1.02 \pm .07] HOLE.

- (10.) "DIM XXX" TO BE DETERMINED BY THE CUSTOMER.

- ⑪. CONNECTOR KEEP-OUT ZONE.

[illegible]

Pro/E

3

coge code	22526
-----------	-------

4

Mouser Electronics

Authorized Distributor

Click to View Pricing, Inventory, Delivery & Lifecycle Information:

FCI:

[51939-147LF](#)