

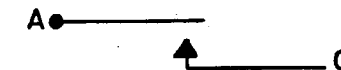
MICRO SWITCH

FREEPORT ILLINOIS U S A
A DIVISION OF HONEYWELL

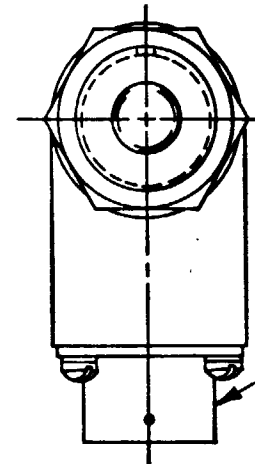
FED. MFG. CODE 91929

SWITCH-ENCLOSED

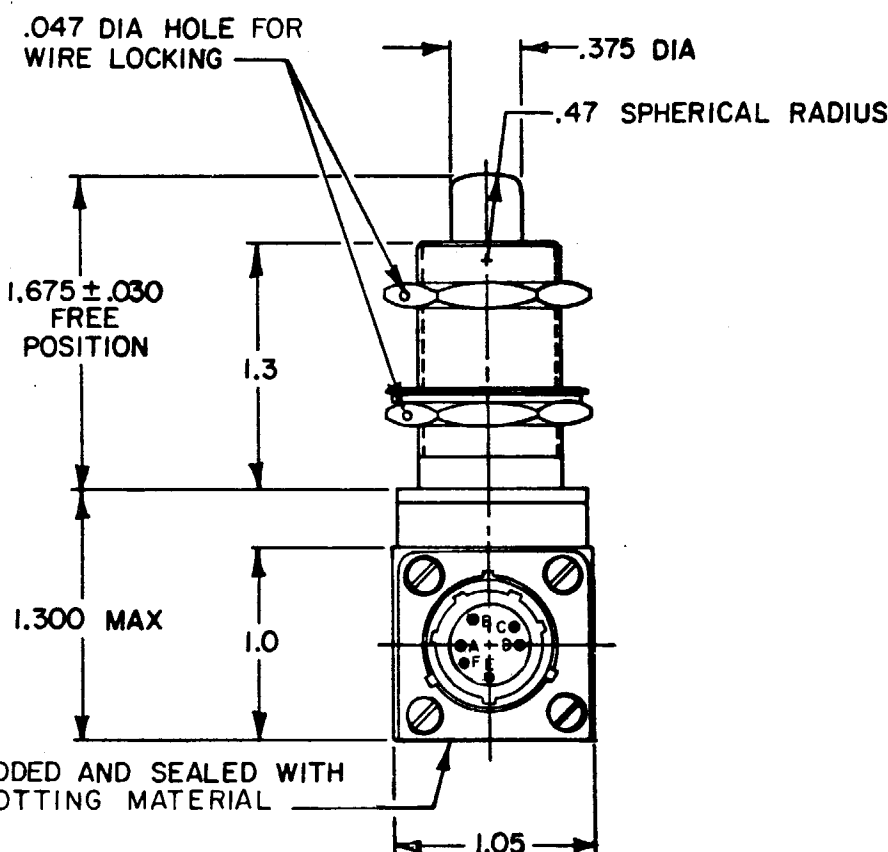
CATALOG LISTING
12HR11-R1



CIRCUIT DIAGRAM



BENDIX SCINTILLA PART
NO. PT02H-10-6PW
OR EQUIVALENT



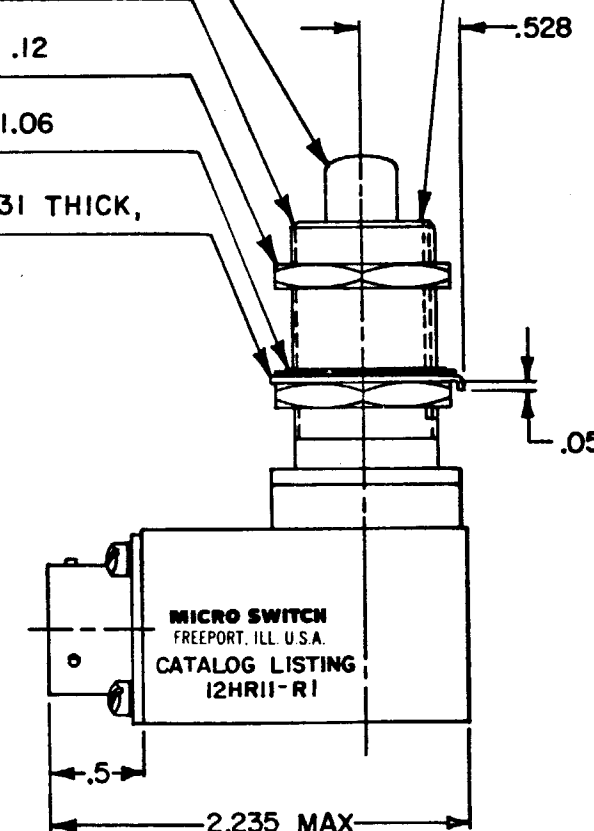
CORROSION RESISTANT STEEL PLUNGER
3/4-20 UNEF THREAD TO WITHIN .150
OF SHOULDER

HEX NUT .938 ACROSS FLATS X .12
THICK (2) 6

INTERNAL TOOTH LOCKWASHER 1.06
DIA X .022 REF THICK 6

KEYING WASHER .98 DIA X .031 THICK,
TAB .110 WIDE 6

.072 ± .004 WIDE X .044 ± .003
DEEP KEYWAY TO WITHIN .250
OF SHOULDER

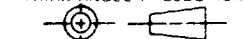


NOTES

- SWITCH SEALED PER MIL-S-8805 SWITCH CHAMBER. WATERTIGHT TEST NOT APPLICABLE
- ALL EXPOSED PARTS ARE CORROSION RESISTANT OR SUITABLY PLATED TO WITHSTAND CORROSION
- CIRCUIT DIAGRAM PERMANENTLY MARKED ON SWITCH HOUSING
- RECEPTACLE PIN IDENTIFICATION IS SHOWN ON CIRCUIT DIAGRAM
- SWITCH WILL OPERATE SATISFACTORILY IN TEMPERATURES FROM -85°F TO +400°F
- HARDWARE MAY BE PACKAGED UNASSEMBLED PER MIL-S-8805

THIS DRAWING COVERS A PROPRIETARY ITEM AND IS THE PROPERTY OF MICRO SWITCH, A DIVISION OF HONEYWELL. THIS DRAWING IS NOT TO BE COPIED OR USED WITHOUT THE APPROVAL OF MICRO SWITCH.

THIRD ANGLE PROJECTION



SCALE FULL

DO NOT SCALE PRINT

CHARACTERISTICS

OPERATING FORCE ----- 6-12 LB
FULL OVERTRAVEL FORCE --- 35 LB MAX
RELEASE FORCE ----- 5 LB MIN
PRETRAVEL ----- .050 MAX
DIFFERENTIAL TRAVEL ---- .015 MAX
OVERTRAVEL ----- .250 MIN

ELECTRICAL DATA

CONTACT ARRANGEMENT

S P N O (1)

	28 VDC SEA LEVEL	28 VDC 50,000 FT
RES	5	
IND	2	

UNLESS OTHERWISE SPECIFIED
TOLERANCES ARE

ONE PLACE (.0) ± .030
TWO PLACE (.00) ± .015
THREE PLACE (.000) ± .005
ANGLES ±

RAW MATERIAL-COMMERCIAL STANDARD
MICRO SWITCH STANDARDS APPLY
DIMENSIONS ARE TO BE MET BEFORE
PROTECTIVE COATINGS ARE APPLIED

WEIGHT 6 OZ APPROX

M 12HR11-R1

DRAWING
NUMBER

ISSUE

9

REVISIONS

A	PR2664	W J M	13 JUN 80
B	CO47277	J A P	8 JAN 81
C	CO54204	G J W	15 NOV 83
D	CO59096	TSK	14 NOV 86
E	CO69306	SAV	15 MAR 90

FO-52851-A

DRAWN

WJM 13 JUN 80

18 JUNE 80

CHECK

CHECK

CHECK

CHECK

CHECK

CHECK

CHECK

CHECK

CHECK

CHECK

CHECK

CHECK

CHECK

CHECK

CHECK

CHECK

Mouser Electronics

Authorized Distributor

Click to View Pricing, Inventory, Delivery & Lifecycle Information:

[Honeywell:](#)

[12HR11-R1](#)