

20" Rack Cases with Elastomer Shocks

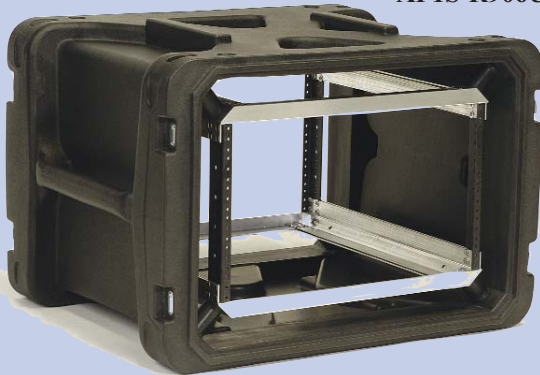


AP1S-R904U20



Molded-in
handles
and
secure
stackability

AP1S-R906U20



AP1S-R904U20



molded-in handles • secure stackability

Ameripack has the largest inventory of carrying, shipping, rack-mount, panel mount, & transit cases available in the United States. Ameripack's injection molded and rotational molded cases are airtight, watertight, crushproof, dustproof and provide maximum protection!

Ameripack's new Roto Shock Racks feature a (20" deep) roto molded tough shell with an integrally molded valance that eliminates the need for a metal valance on the outside of the case.

FEATURES:

- Standard 19" rack width per EIA standards
- Redesigned frame with threaded steel rails and aluminum cross components forming an "H" shaped rigid configuration
- Standard rack depth front to rear rail is 20"
- Front and rear doors are fitted with rubber gaskets for water resistant protection
- Recessed heavy-duty twist latches allow these cases to meet most ATA and military specifications
- Caster cart board for 20" shock rack is Ap1S-1916

Part #	Lid Depth	Rack Units	Height
AP1S-R904U20	2-1/4"	4 Space	7" High
AP1S-R906U20	2-1/4"	6 Space	10-1/2" High
AP1S-R908U20	3-1/4"	8 Space	14" High
AP1S-R910U20*	3-1/4"	10 Space	17-1/2" High
AP1S-R912U20*	3-1/4"	12 Space	21" High
AP1S-R914U20*	3-1/4"	14 Space	24-1/2" High
AP1S-R916U20*	3-1/4"	16 Space	28" High

- Comes standard with 8 each HM-245 elastomeric, high damping, wide temperature range shock mounts with a load range of 40 to 250 lbs.
- Additional or stiffer shock mounts may be ordered from the factory and are easily field-installed (call for details and availability). *Shock absorber kit P/N: HM-245, increases load to 400 lbs.
- Easy-grip molded handles
- Molded-in lugs allow all sizes within the series to stack securely
- See www.ameripack.com for new sizes

**Shock absorber kit P/N: HM-245, increases load to 400 lbs.*

609-259-7004 • Fax: 609-259-8975

www.ameripack.com • E-Mail: sales@ameripack.com • 1-800-456-7963