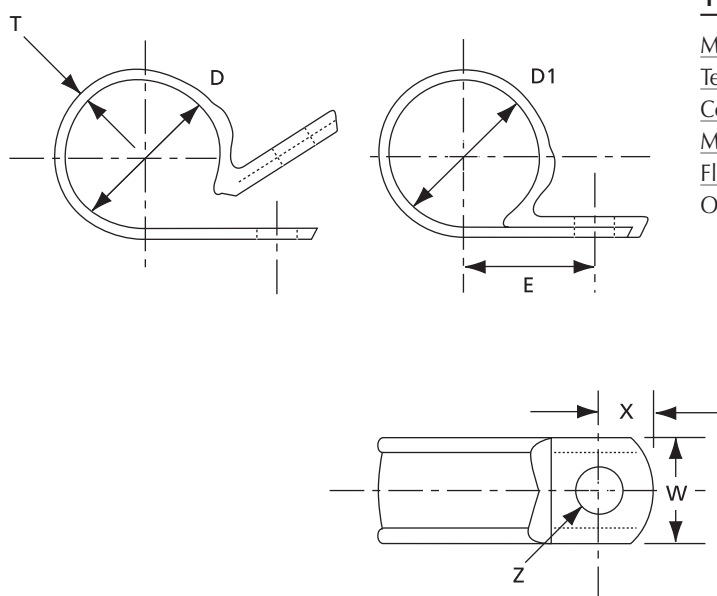


Accessories

Cable clamps

Self-aligning cable clamps

- Moulded-in saddle washer enhances performance and appearance
- Self-alignment feature makes this clamp ideal for assembly applications
- 14 diameters and 2 widths with mounting holes for M4 and M5 screws
- Item numbers moulded-in for easy identification
- Indoor application



Technical Information

| | |
|---------------------|-------------------------------|
| Material | Heat-stabilised Polyamide 6.6 |
| Temperature range | -40°C to +105°C |
| Colour | Black |
| Mounting method | Screw |
| Flammability rating | UL 94 V-2 |
| Other properties | Halogen free, Silicone free |

Ordering Information

| PRODUCT REF. | DIMENSIONS | | | | | | | QUANTITY |
|---------------|--------------------------|-------------------------|-------|------|-------|------|------|----------|
| | D | D1 | E | T | W | Z | X | |
| | NOMINAL DIAMETER [mm] | CLOSED DIAMETER [mm] | [mm] | [mm] | [mm] | [mm] | [mm] | |
| W4NY-125-0-C | 3.17 | 2.89 | 8.46 | 1.02 | 9.52 | 4.24 | 6.53 | 100 |
| W4NY-187-0-C | 4.76 | 4.36 | 9.02 | 1.02 | 9.52 | 4.24 | 5.53 | 100 |
| W4NY-250-0-C | 6.34 | 5.94 | 9.70 | 1.02 | 9.52 | 4.24 | 4.83 | 100 |
| W4NY-312-0-C | 7.93 | 7.54 | 10.71 | 1.02 | 9.52 | 4.24 | 5.21 | 100 |
| W4NY-375-0-C | 9.52 | 9.11 | 11.53 | 1.02 | 9.52 | 4.24 | 5.33 | 100 |
| W4NY-500-0-C | 12.69 | 12.29 | 12.45 | 1.02 | 9.52 | 4.24 | 6.76 | 100 |
| W6NY-562-0-C | 14.28 | 13.90 | 16.68 | 1.52 | 12.69 | 5.15 | 5.99 | 100 |
| W6NY-625-0-C | 15.87 | 15.46 | 16.17 | 1.52 | 12.69 | 5.15 | 7.37 | 100 |
| W6NY-687-0-C | 17.46 | 17.06 | 17.63 | 1.52 | 12.69 | 5.15 | 8.31 | 100 |
| W6NY-750-0-C | 19.04 | 18.64 | 18.44 | 1.52 | 12.69 | 5.15 | 8.28 | 100 |
| W6NY-812-0-C | 20.63 | 20.24 | 19.71 | 1.52 | 12.69 | 5.15 | 8.20 | 100 |
| W6NY-875-0-C | 22.22 | 21.81 | 18.62 | 1.52 | 12.69 | 5.15 | 7.87 | 100 |
| W6NY-1000-0-C | 25.39 | 24.99 | 22.38 | 1.52 | 12.69 | 5.15 | 7.42 | 100 |
| W6NY-1250-0-C | 31.73 | 31.16 | 25.65 | 1.52 | 12.69 | 5.15 | 8.61 | 100 |

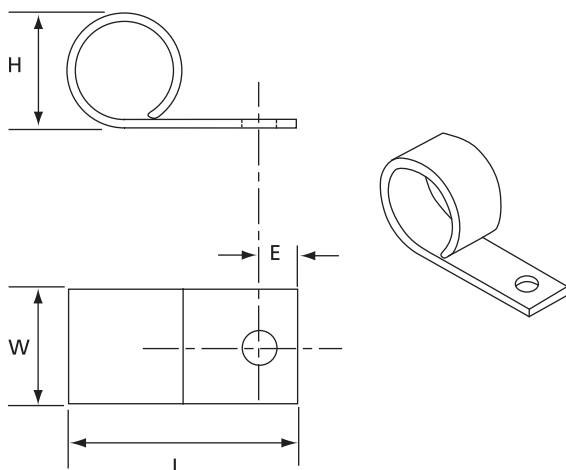
Also available in quantities of 1,000 pieces. For other colours please contact your Sales Office

Accessories

Cable clamps

Rigid PVC cable clamps

- Open mounting clips
- Easy to use: cables, for example, are simply pushed sideways into the clip one by one



Technical Information

| | |
|---------------------|----------------|
| Material | Rigid PVC |
| Temperature range | -40°C to +85°C |
| Colour | White |
| Mounting method | Screw |
| Flammability rating | UL 94 V-2 |

Ordering Information

| PRODUCT REF. | DIMENSIONS | | | | MOUNTING HOLE Ø | WEIGHT | QUANTITY |
|--------------|------------|-----------|-----------|-----------|--------------------|--------|----------|
| | H [mm] | W [mm] | L [mm] | E [mm] | | | |
| TC70 | 6.4 | 9.9 | 22.2 | 6.4 | 5.2 | 49 | 100 |
| TC71 | 12.7 | 9.9 | 29.0 | 6.4 | 5.2 | 123 | 100 |
| TC72 | 20.6 | 13.1 | 36.9 | 6.4 | 5.2 | 259 | 100 |
| TC73 | 25.4 | 13.1 | 46.8 | 6.4 | 5.2 | 399 | 100 |
| TC74 | 38.1 | 13.1 | 58.3 | 6.4 | 5.2 | 608 | 100 |

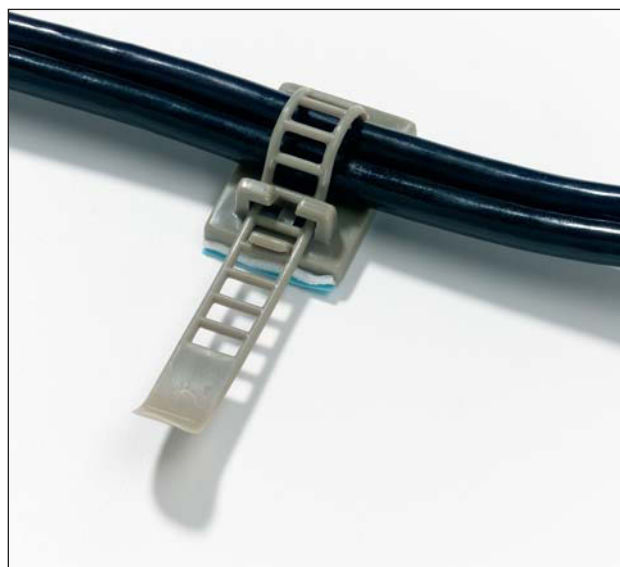
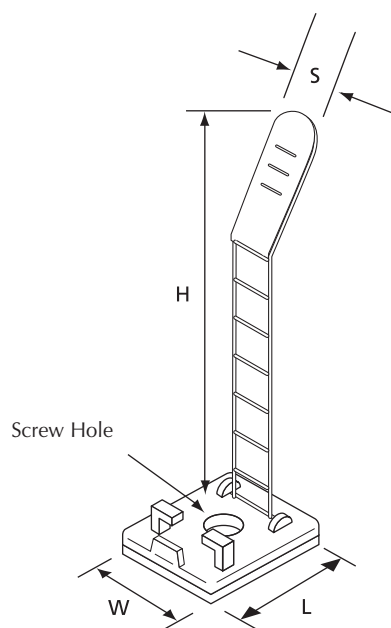
For other quantities please contact your Sales Office

Accessories

Cable clamps

Adjustable, ladder style clamps

- Ladder style fastener is easily released and refastened
- Supplied "single-cut" on a rubber based closed cell foam adhesive
- In addition, can also be mounted with a screw, for improved pull-off strength



Technical Information

| | |
|---------------------|---------------------------------------|
| Material | Polyamide 6.6 |
| Temperature range | -40°C to +85°C |
| Colour | Grey |
| Mounting method | Self adhesive and / or screw-mounting |
| Flammability rating | UL 94 V-2 (clamp) |
| Other properties | Halogen free, Silicone free |

Ordering Information

| PRODUCT REF. | DIMENSIONS | | | | BUNDLE DIAMETER RANGE [mm] | SCREW HOLE DIAMETER [mm] | QUANTITY [pieces] |
|--------------|------------|-----------|-----------|-----------|----------------------------------|--------------------------------|----------------------|
| | H [mm] | W [mm] | L [mm] | S [mm] | | | |
| ULNY-013-8-C | 59.5 | 18 | 25 | 8 | 3 - 12.7 | 2.79 | 100 |
| ULNY-018-8-C | 79.4 | 21 | 30 | 12 | 5 - 21.0 | 2.79 | 100 |
| ULNY-023-8-C | 85.5 | 25 | 35 | 14 | 7 - 25.0 | 3.43 | 100 |

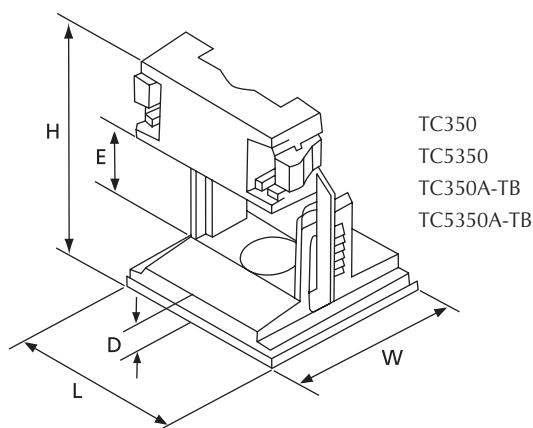
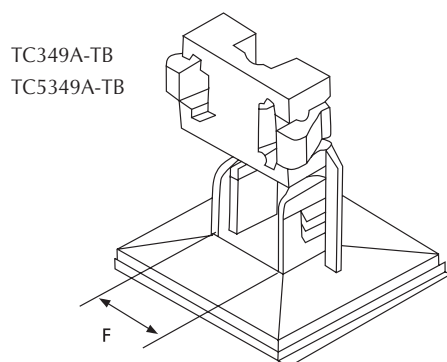
For other quantities please contact your Sales Office

Accessories

Cable clamps

Latching clamps

- Re-usable tie mounting clamps
- For self-adhesive and / or screw- or rivet mounting
- One-piece design with integrated releasable lock
- The inner profile protects sensitive cables, fibre optics etc
- Desired height can be set in 3 or 6 ratchet steps
- The large base surface area and the strong adhesive film guarantees a high adhesive strength
- The self-adhesive film is foam backed (0.8 mm) to compensate for any irregularities on the mounting surface



Technical Information

| | |
|---------------------|---------------------------------|
| Material | Polyamide 6.6 |
| Temperature range | -40°C to +85°C |
| Colour | Natural |
| Mounting method | Self adhesive or screw-mounting |
| Flammability rating | UL 94 V-2 |
| Other properties | Halogen free, Silicone free |

Ordering Information

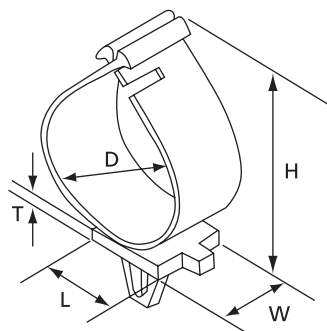
| PRODUCT REF. | MOUNTING METHOD | DIMENSIONS | | | | | | | MOUNTING HOLE Ø | WEIGHT | QUANTITY |
|--------------|-----------------------|--------------|--------------|------|------|------|---------------------------------------------|--------------------------------|-----------------|--------|----------|
| | | H | H | W | L | D | E | F | | | |
| | | MAX. [mm] | MIN. [mm] | [mm] | [mm] | [mm] | HEIGHT OF CLAMPING AREA MIN. - MAX. [mm] | WIDTH OF CLAMPING AREA [mm] | | | |
| TC349A-TB | self-adhesive | 14.5 | 11.5 | 25.0 | 25.0 | 2.7 | 6 - 8.5 | 6 | – | 120 | 1000 |
| TC5349A-TB | self-adhesive | 14.5 | 11.5 | 25.0 | 25.0 | 2.7 | 6 - 8.5 | 6 | – | 120 | 100 |
| TC350A-TB | self-adhesive /screw | 22.0 | 18.0 | 25.0 | 25.0 | 4.7 | 6 - 12.5 | 15 | 4.3 | 400 | 1000 |
| TC5350A-TB | self-adhesive / screw | 22.0 | 18.0 | 25.0 | 25.0 | 4.7 | 6 - 12.5 | 15 | 4.3 | 400 | 100 |
| TC350 | screw | 21.3 | 17.2 | 25.0 | 25.0 | 4.0 | 6 - 12.5 | 15 | 4.3 | 380 | 1000 |
| TC5350 | screw | 21.3 | 17.2 | 25.0 | 25.0 | 4.0 | 6 - 12.5 | 15 | 4.3 | 380 | 100 |

Accessories

Cable clamps

Re-openable clamps

- Simple installation
- Can be mounted by clipping-in or gluing
- For series production or as a temporary support during wiring installation
- Clip ends are rounded for comfortable re-opening
- Product Ref. TC 95 features 2-stage lock



Technical Information

| | |
|---------------------|-----------------------------|
| Material | Polyamide 6.6 |
| Temperature range | -40°C to +85°C |
| Colour | Natural |
| Mounting method | Clip in |
| Flammability rating | UL 94 V-2 |
| Other properties | Halogen free, Silicone free |

Ordering Information

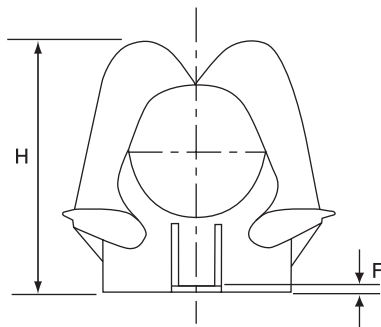
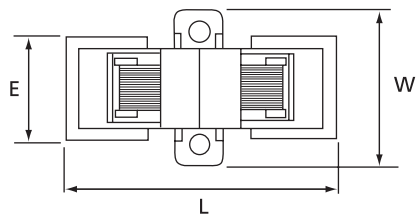
| PRODUCT REF. | DIMENSIONS | | | | | FOR WALL THICKNESS FROM ... TO | MOUNTING HOLE Ø | WEIGHT | QUANTITY |
|--------------|------------|-----------|-----------|-----------|-----------|-----------------------------------|-----------------|--------|----------|
| | H [mm] | W [mm] | L [mm] | D [mm] | T [mm] | | | | |
| TC88 | 22.6 | 12.7 | 19.1 | 12.7 | 2.5 | 2.5 - 3.6 | 5.7 - 7 | 115 | 100 |
| TC95 | 40.5 | 12.7 | 19.1 | 25.4 | 2.5 | 2.5 - 3.6 | 5.7 - 7 | 278 | 100 |

Accessories

Mounting clamp

Re-openable clamps with springs

- Holding clips with rubberised fabric tape
- The built-in springs hold the cable bundle safely in the desired position
- The upper clip end is rounded for easy addition of cables
- Strong fixing due to two mounting holes, aligned along the axis of the cable bundle



Technical Information

| | |
|---------------------|------------------------|
| Material - Body | Polyamide 6.6 |
| Material - Elastic | Rayon & natural rubber |
| Material - Spring | Steel |
| Temperature range | -40°C to +85°C |
| Colour | Natural |
| Mounting method | 2 screws |
| Flammability rating | UL 94 V-2 (body) |
| Other properties | Halogen free |

Ordering Information

| PRODUCT REF. | DIMENSIONS | | | | | MAX. BUNDLE Ø | MOUNTING HOLE Ø | WEIGHT | QUANTITY |
|--------------|------------|-----------|-----------|-----------|-----------|---------------|-----------------|--------|----------|
| | H [mm] | L [mm] | W [mm] | E [mm] | F [mm] | | | | |
| TC86 | 46 | 44.5 | 31.8 | 22.2 | 2.5 | 19 | 3.9 | 860 | 25 |
| TC87 | 58 | 62.7 | 38.1 | 25.4 | 2.5 | 32 | 3.9 | 1950 | 25 |