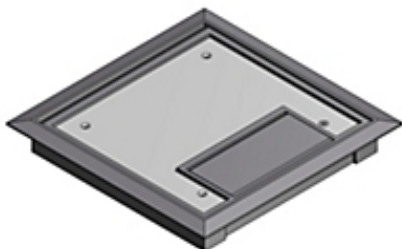




Actual



Representative

Catalog Number: 665-CST-SW-GRY
Product ID: 7TAA003120R0001
UPC Number: 78599103271
Status: A

Cover for 665 Series Boxes, Gray, Polycarbonate with 5/32 Inch Steel Plate, Load Rating 750 Pounds

- Factory installed gaskets reduce installation time
- Recessed cover plate accepts tile or carpet to blend into existing floor.
- Dust gasket on the cord shields the floor box from dust and debris.
- Lid snaps securely shut and does not require a locking screw
- Cord can be locked in the open position to protect power and data cables.

North American Specifications (UNSPSC)

UNSPSC	39121307 Floor boxes
IGCC	4432 Floor boxes
Brand Name	Steel City
Type	Recessed Service
Special Features	Factory installed gaskets reduce installation time
Application	For use with 665 and AFM 4 series floor boxes
Standard	UL E2969
Material	Non-Metallic with Steel Reinforcement Plate
Color	Gray

European Specifications (ETIM)

ETIM	EC001906 Mounting cover for underfloor draw-in box
Mounting opening	Rectangular
Cover mounting opening	Y
Floor maintenance	Dry
Material	Other

Packaging

Inner Quantity	1
Inner Dimensions (inches)	9.5x10x1.5
Outer Quantity	4
Outer Dimensions (inches)	11x10x8.2
Weight Uom	255.5 lbs. per 100

Documents / Support Tools

Technical Drawing / Data Sheet	WSD-000058
Technical Drawing / Data Sheet Canada	Available on Website
Technical Drawing / Data Sheet Canada	Available on Website
Instruction Sheet	TA02623-TB2

Header

3D Model	Available on Website
----------	----------------------

For further technical assistance, please contact us...

ABB Installation Products - USA
 860 Ridge Lake Blvd.
 Memphis, TN 38120
www.tnb.com

ABB Installation Products Technical Support
 MS 3B-50
 860 Ridge Lake Blvd.
 Memphis, TN 38120

Hours: 7AM - 6PM CDT
 Monday-Friday
 Phone: (888) 862-3289
 Fax: (901) 252-1321
 Email: techsupport@tnb.com