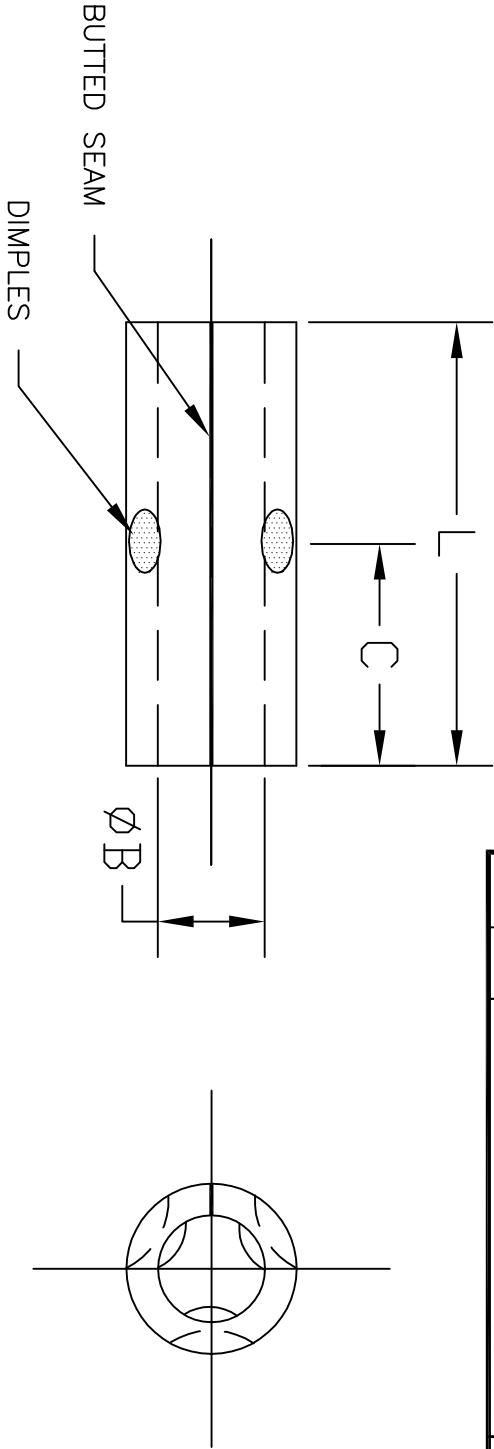


ALL RIGHTS RESERVED. NO PORTION OF THIS PUBLICATION, WHETHER IN WHOLE OR IN PART CAN BE REPRODUCED WITHOUT THE EXPRESS WRITTEN CONSENT OF SPC TECHNOLOGY.

| REVISIONS | | | | | DOC. NO. | SPC-F005 | Effective: 12/21/98 | | DCP No. 68 |
|-----------|-----|-------------------------|-------|----------|----------|----------|---------------------|--------|------------|
| DCP # | REV | DESCRIPTION | DRAWN | DATE | CHECKD | DATE | APPRD | DATE | |
| | A | Rerdrawn in AutoCad | JAP | 11/12/91 | | | | | |
| 1116 | B | Was Dwg #CCS-TO-1*1*-HT | JWM | 6/01/01 | JC | 6/20/01 | JC | 6/20/0 | |



| PART NO. | WIRE RANGE (AWG) | DIAMETER 'B' | L | C | WALL THICK-NESS |
|----------------|------------------|--------------|-----|-----|-----------------|
| CCS-TO-1010-HT | 12-10 | .135 | .56 | .28 | .040 |
| CCS-TO-1414-HT | 16-14 | .090 | .56 | .28 | .030 |
| CCS-TO-1818-HT | 22-18 | .070 | .56 | .28 | .030 |

NOTES:

1. MATERIAL: ALLOY STEEL
FINISH: NICKEL PLATING
2. CONTINUOUS OPERATING TEMPERATURE:
900°F (482°C)
INTERMITTENT OPERATING TEMPERATURE:
1200°F (649°C)
3. VOLTAGE RATING: 600 V.

DISCLAIMER:
ALL STATEMENTS AND TECHNICAL INFORMATION CONTAINED HEREIN ARE BASED UPON INFORMATION AND/OR TESTS WE BELIEVE TO BE ACCURATE AND RELIABLE. SINCE CONDITIONS OF USE ARE BEYOND OUR CONTROL, THE USER SHALL DETERMINE THE SUITABILITY OF ELECTRONIC PARTS FOR THE INTENDED USE AND ASSUME ALL RISK AND LIABILITY WHATSOEVER IN CONNECTION THEREWITH.



SPC TECHNOLOGY

| | | | | | | | | | | | | | |
|--|--|--|--|-----------------|--|--|--|----------------|--|---|--|----------------------------|--|
| Tolerances: Unless Otherwise Specified: .X = ±.015 .XX = ±.010 .XXX = ±.005 | | | | DRAWN BY: JC | | | | DATE: 3/4/91 | | DRAWING TITLE: High-Temperature Butt Connectors | | | |
| | | | | CHECKED BY: JC | | | | DATE: 11/21/91 | | SIZE: A | | | |
| | | | | APPROVED BY: JL | | | | DATE: 11/21/91 | | DWG. NO. TA-350 | | | |
| | | | | | | | | SCALE: NTS | | U.O.M.: INCHES [mm] | | ELECTRONIC FILE TA-350.dwg | |
| | | | | | | | | | | SHEET: 1 | | OF 1 | |