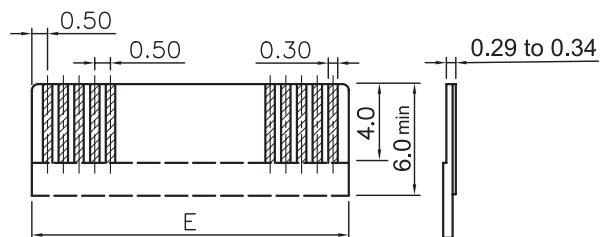
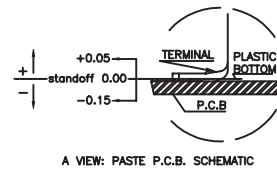
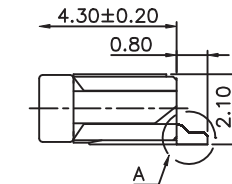
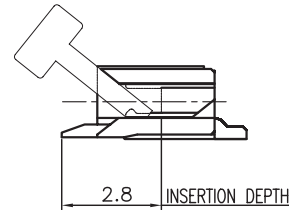


RECOMMENDED PCB LAYOUT - COMPONENT VIEW



APPLICABLE FFC LAYOUT



MATERIAL:
HOUSING MATERIAL: LCP
COLOR: IVORY
ACTUATOR MATERIAL: LCP
COLOR: BLACK
CONTACT MATERIAL: PHOSPOR BRONZE
CONTACT PLATING: 100µ" TIN OVER 50µ" NI
QUALITY CLASS: 25 MATING CYCLES*


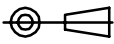
ENVIRONNEMENTAL:
OPERATING TEMPERATURE: -25°C UP TO 85°C
FLAMABILITY RATING: UL94-V0
COMPLIANCE: LEAD FREE AND ROHS

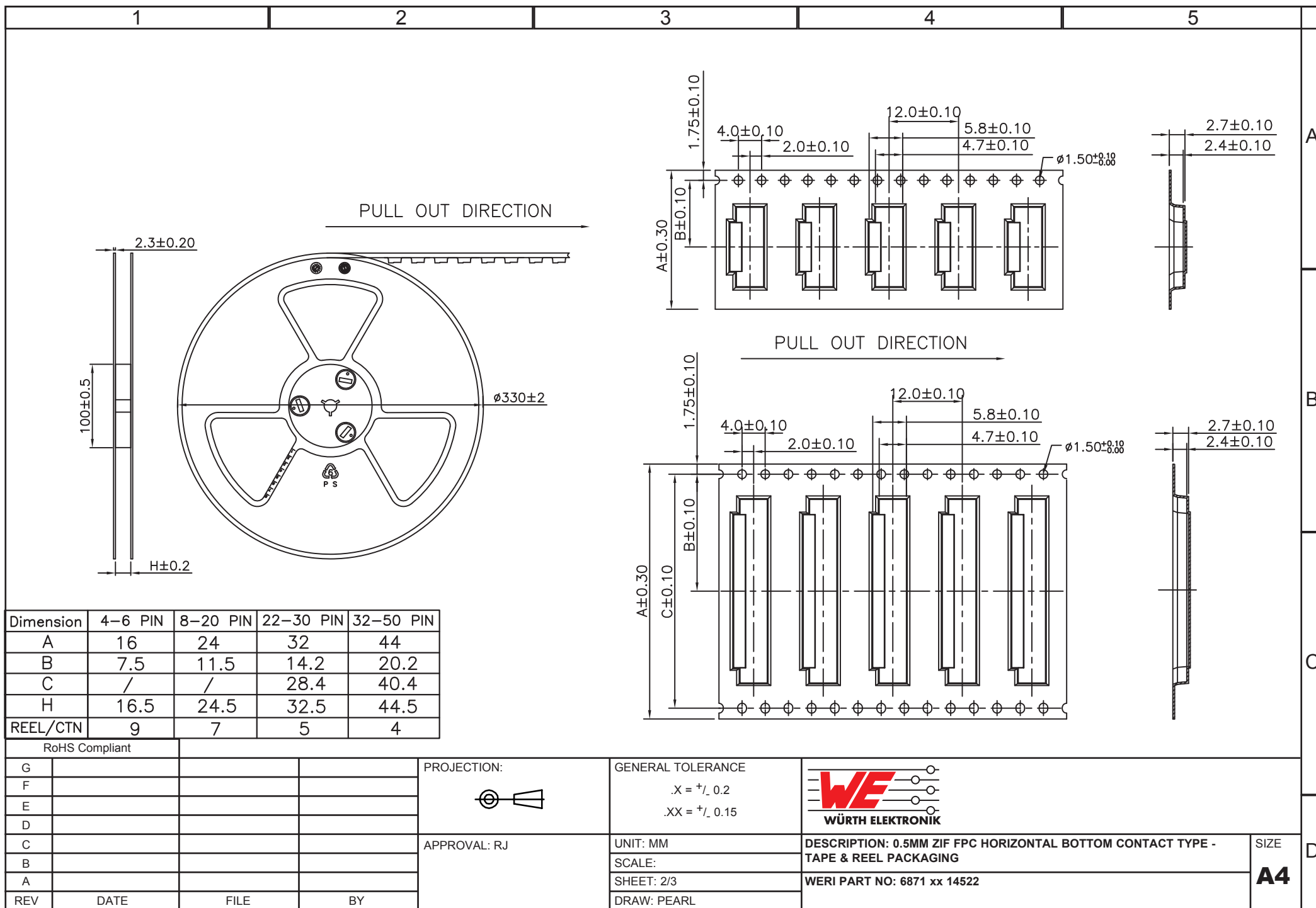
ELECTRICAL:
CURRENT RATING: 0.5A
WORKING VOLTAGE: 50V
INSULATION RESISTANCE: >100MOHM
DIELECTRIC WITHSTANDING VOLT.: 250VAC/MN
CONTACT RESISTANCE: 20mOHM MAX

STANDARD
A CERTIFIED: E323964 / MODEL NUMBER 687
FOLLOWED BY 1, FOLLOWED BY 04 THRU 50, FOLLOWED
BY 140 OR 145, FOLLOWED BY NUMERIC DIGITS

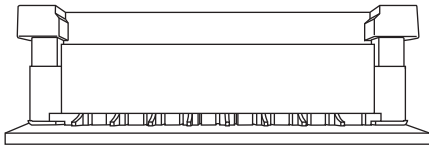
SOLDERING:
REFLOW PROCESS ONLY

DIMENSION:
B = 0.5 x NB PINS + 6.4
C = 0.5 x (NB PINS - 1)
D = 0.5 x (NB PINS + 1) + 0.1
E = 0.5 x (NB PINS + 1)

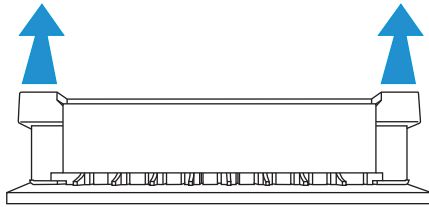
RoHS Compliant				*NOTE: theoretical value related to the Tin plating; however, due to the sensitive actuator, we recommend not to make more than 1 or 2 cycles in order to maintain acceptable mechanical & electrical conditions			
				PROJECTION:	GENERAL TOLERANCE		
					.X = ± 0.2 .XX = ± 0.15		
				APPROVAL: RJ	UNIT: MM	DESCRIPTION: 0.5MM ZIF FPC HORIZONTAL BOTTOM CONTACT TYPE - TAPE & REEL PACKAGING	
I	13-DEC-13	TPK UPDATE	QL		SCALE:		
H	23-JAN-13	UNIT $\mu \Rightarrow \mu$ "	QL		SHEET: 1/3	WERI PART NO: 6871 xx 14522	
REV	DATE	FILE	BY		DRAW: PEARL		
						SIZE A4	



①



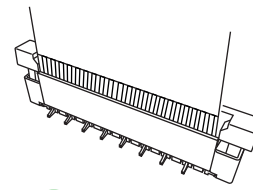
②



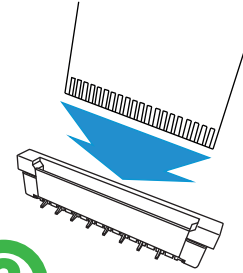
Pull the actuator upwards in the open position

Ⓐ

①



②



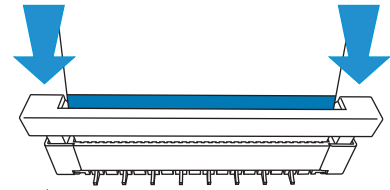
Insert the FFC cable vertically until the conductor almost disappears

Ⓑ

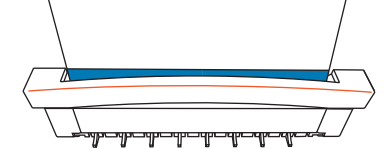


Press actuator in the middle to make there is no gap and the actuator is locked

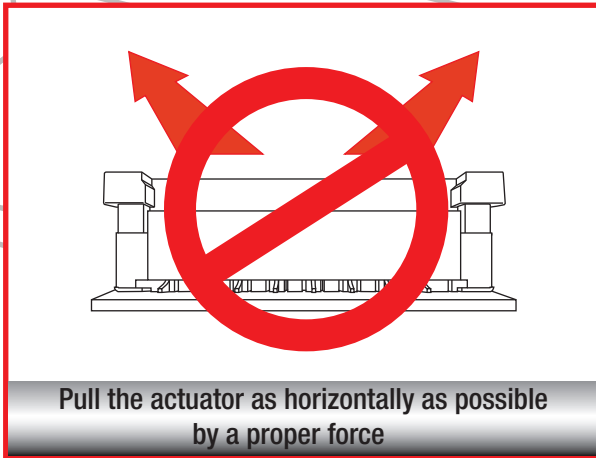
①



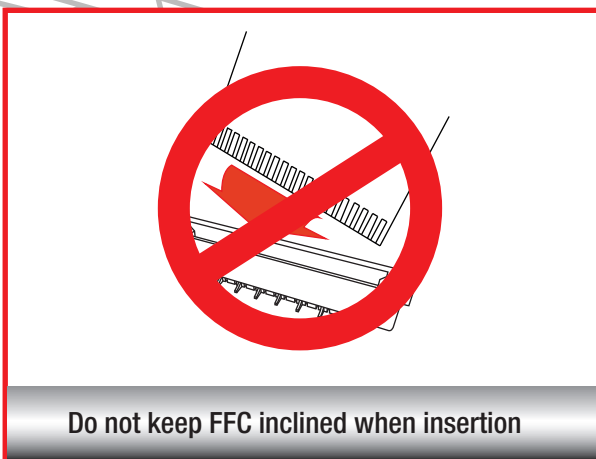
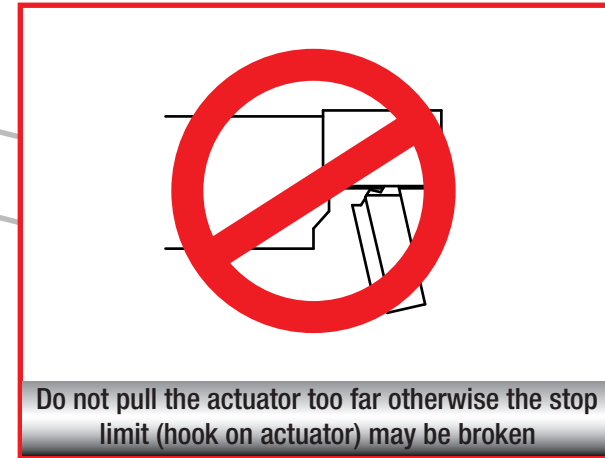
②



Press both ends of the actuator



A



B

