

Speed Controller with One-touch Fittings

Series AS

Elbow Type/Universal Type

■ Applicable tubing O.D.: Metric Size ■ Connection thread: M, R

How to Order

AS 2 2 1 1F — **01** — **06 S** — —

Body size

1	M3, M5 standard
2	1/8, 1/4 standard
3	3/8 standard
4	1/2 standard

Type

2	Elbow
3	Universal

Control method

0	Meter-out
1	Meter-in

With one-touch fitting

Thread type

-	Metric thread (M3, M5)
	R

Electroless nickel plated specifications

-	Partly unplated
N	All plated

* Electroless nickel plating is standardized for some items. Please refer to models and types for more information.

Lock nut configuration

-	Standard (Round)
K	Hexagon type

Sealant

Nil	-
S	With sealant

* S is not necessary with M3 and M5, which are not available with sealant. Gaskets are standardised instead.

Applicable tubing O.D.

Port size

M3	M3 X 0.5
M5	M5 X 0.8
01	1/8
02	1/4
03	3/8
04	1/2

Metric size

23	ø3.2*
04	ø4
06	ø6
08	ø8
10	ø10
12	ø12

* Use a ø1/8 tubing.

Elbow type



Universal type



Model

● indicates that electroless nickel plated model (N specification) is the standardised.

Port size	Applicable tubing O.D.						Applicable cylinder tubing O.D. mm	Elbow type		Universal type	
	Metric size							Meter-out	Meter-in	Meter-out	meter-in
	3.2	4	6	8	10	12					
M3 X 0.5	●	●					2.5, 4, 6	AS1201F-M3	AS1211F-M3	AS1301F-M3	AS1311F-M3
M5 X 0.8	●	●	●				6, 10, 16, 20	AS1201F-M5	AS1211F-M5	AS1301F-M5	AS1311F-M5
R1/8	●	●	●	●	●	*	20, 25, 32	AS2201F-01	AS2211F-01	AS2301F-01	AS2311F-01
R1/4		●	●	●	●		20, 25, 32, 40	AS2201F-02	AS2211F-02	AS2301F-02	AS2311F-02
R1/4			●	●	●	●	40, 50, 63	AS3201F-02	AS3211F-02	AS3301F-02	AS3311F-02
R3/8			●	●	●	●	40, 50, 63	AS3201F-03	AS3211F-03	AS3301F-03	AS3311F-03
R1/2					●	●	63, 80, 100	AS4201F-04	AS4211F-04	AS4301F-04	AS4311F-04

Note 1) *Elbow type only

Note 2) The meter-out and meter-in types are visually distinguished by the lock nut.

The lock nut of the meter-out type is electroless nickel plated while that of the meter-in type is black zinc chromate plated.

Specifications

Proof pressure	1.5 MPa
Max. operating pressure	1 MPa
Min. operating pressure	0.1 MPa
Ambient and fluid temperature	-5 to 60°C (No freezing)
Number of needle rotations	10 rotations (8 rotations ^{Note 1)})
Applicable tubing material ^{Note 2)}	Nylon, Soft Nylon, Polyurethane
Option	With seal ^{Note 3)} , Hexagon lock nut, Electroless nickel plated specifications ^{Note 4)}

Note 1) In case of types AS1201F-M5 and AS1211F-M5.

In case of types AS1301F-M5 and AS1311F-M5.

Note 2) Pay attention to the maximum operating pressure when soft nylon or polyurethane is used. (Refer to Best Pneumatics 2004 Vol. 15 for more information.)

Note 3) Types with M3 and M5 port sizes are not available with sealant.

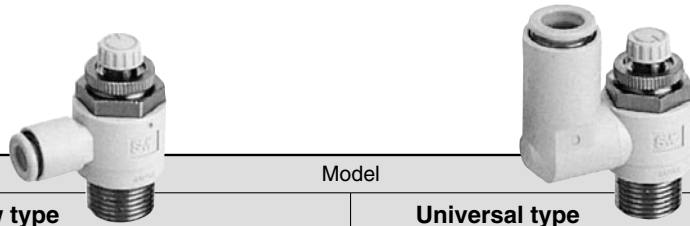
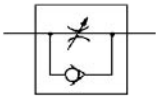
Note 4) Brass parts are all electroless nickel plated.

Refer to Best Pneumatics 2004 Vol. 15 for inch sizes.

Elbow Type / Universal Type

AS

JIS symbol



Applicable tubing O.D. mm	Connection thread	Model			
		Elbow type		Universal type	
		Meter-out	Meter-in	Meter-out	Meter-in
3.2	M3 X 0.5	AS1201F-M3-23	AS1211F-M3-23	AS1301F-M3-23	AS1311F-M3-23
	M5 X 0.8	-M5-23	-M5-23	-M5-23	-M5-23
	R1/8	AS2201F-01-23	AS2211F-01-23	AS2301F-01-23	AS2311F-01-23
4	M3 X 0.5	AS1201F-M3-04	AS1211F-M3-04	AS1301F-M3-04	AS1311F-M3-04
	M5 X 0.8	-M5-04	-M5-04	-M5-04	-M5-04
	R1/8	AS2201F-01-04S	AS2211F-01-04S	AS2301F-01-04S	AS2311F-01-04S
	R1/4	-02-04S	-02-04S	-02-04S	-02-04S
6	M5 X 0.8	AS1201F-M5-06	AS1211F-M5-06	AS1301F-M5-06	AS1311F-M5-06
	R1/8	AS2201F-01-06S	AS2211F-01-06S	AS2301F-01-06S	AS2311F-01-06S
	R1/4	-02-06S	-02-06S	-02-06S	-02-06S
		AS3201F-02-06S	AS3211F-02-06S	AS3301F-02-06S	AS3311F-02-06S
	R3/8	-03-06S	-03-06S	-03-06S	-03-06S
8	R1/8	AS2201F-01-08S	AS2211F-01-08S	AS2301F-01-08S	AS2311F-01-08S
	R1/4	-02-08S	-02-08S	-02-08S	-02-08S
		AS3201F-02-08S	AS3211F-02-08S	AS3301F-02-08S	AS3311F-02-08S
	R3/8	-03-08S	-03-08S	-03-08S	-03-08S
10	R1/8	AS2201F-01-10S	AS2211F-01-10S		
		-02-10S	-02-10S	AS2301F-02-10S	AS2311F-02-10S
	R1/4	AS3201F-02-10S	AS3211F-02-10S	AS3301F-02-10S	AS3311F-02-10S
	R3/8	-03-10S	-03-10S	-03-10S	-03-10S
	R1/2	AS4201F-04-10S	AS4211F-04-10S	AS4301F-04-10S	AS4311F-04-10S
12	R1/4	AS3201F-02-12S	AS3211F-02-12S	AS3301F-02-12S	AS3311F-02-12S
	R3/8	-03-12S	-03-12S	-03-12S	-03-12S
	R1/2	AS4201F-04-12S	AS4211F-04-12S	AS4301F-04-12S	AS4311F-04-12S

AS•F

ASD•F

AS•FM

ASD•FM

ASG

AS•FG

ASD•FG

AS•FP

AS•F

AS•FE

ASV•F

ASP•F

AS•FT

AS•FD

ASD•FD

Related Equipment



Made to Order

Lubricant: Vaseline

X12

(Example) AS2201F-01-04S-X12

Oil Free (Sealant: PTFE Coated) + Without Check Valve (Throttle Valve)

X21

(Example) AS2201F-01-04S-X21

Note 1) Not a non particle generation type.

Note 2) Only items with meter-out part numbers are available in case of throttle valves.

Throttle Valve (Without Check Valve)

X214

(Example) AS2201F-01-04S-X214

Note) Only items with meter-out part numbers are available in case of throttle valves.

Clean Series

10-

Lubricant: Fluoresin grease

Double packaging

(Example) 10-AS2201F-01-04