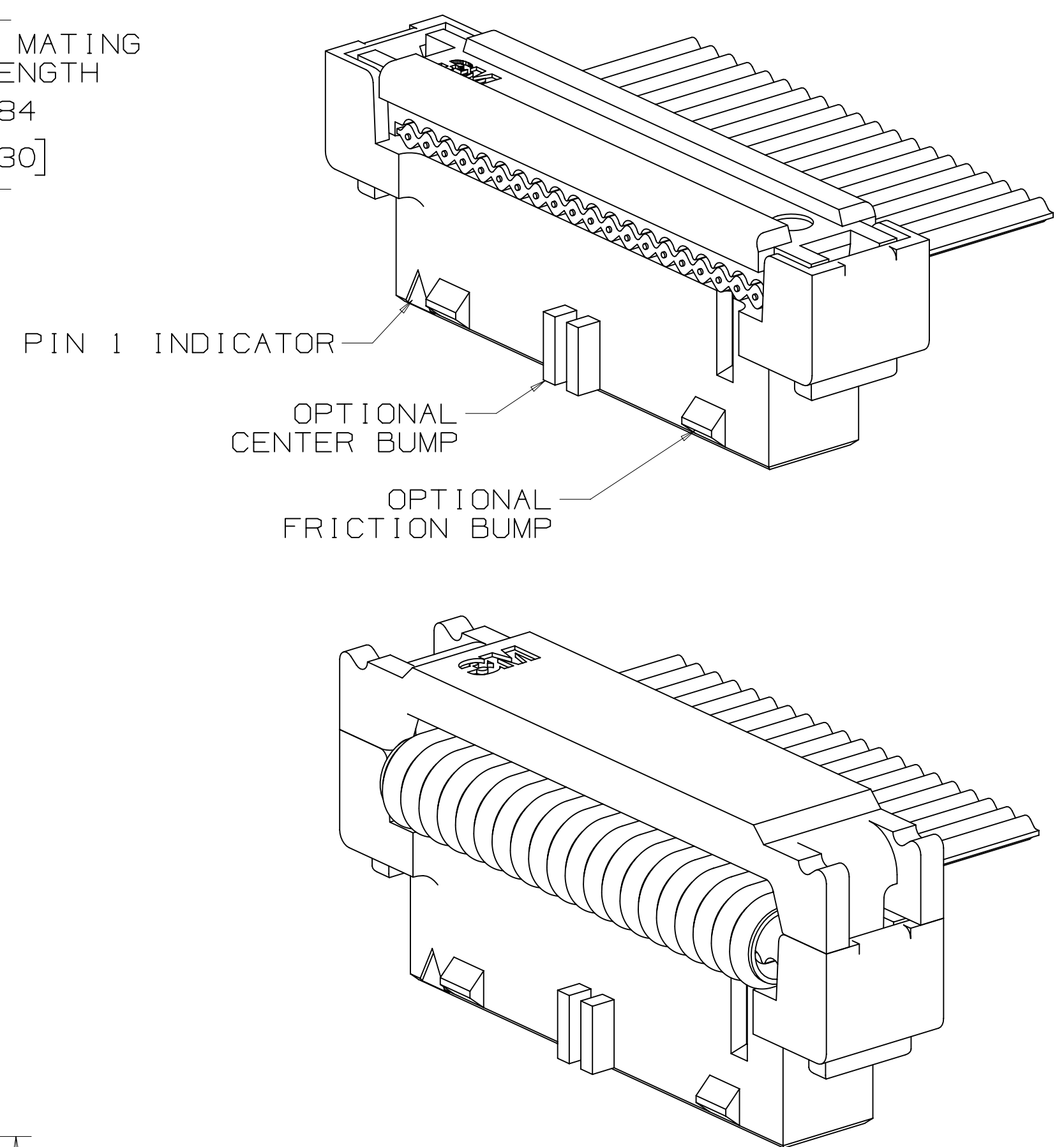
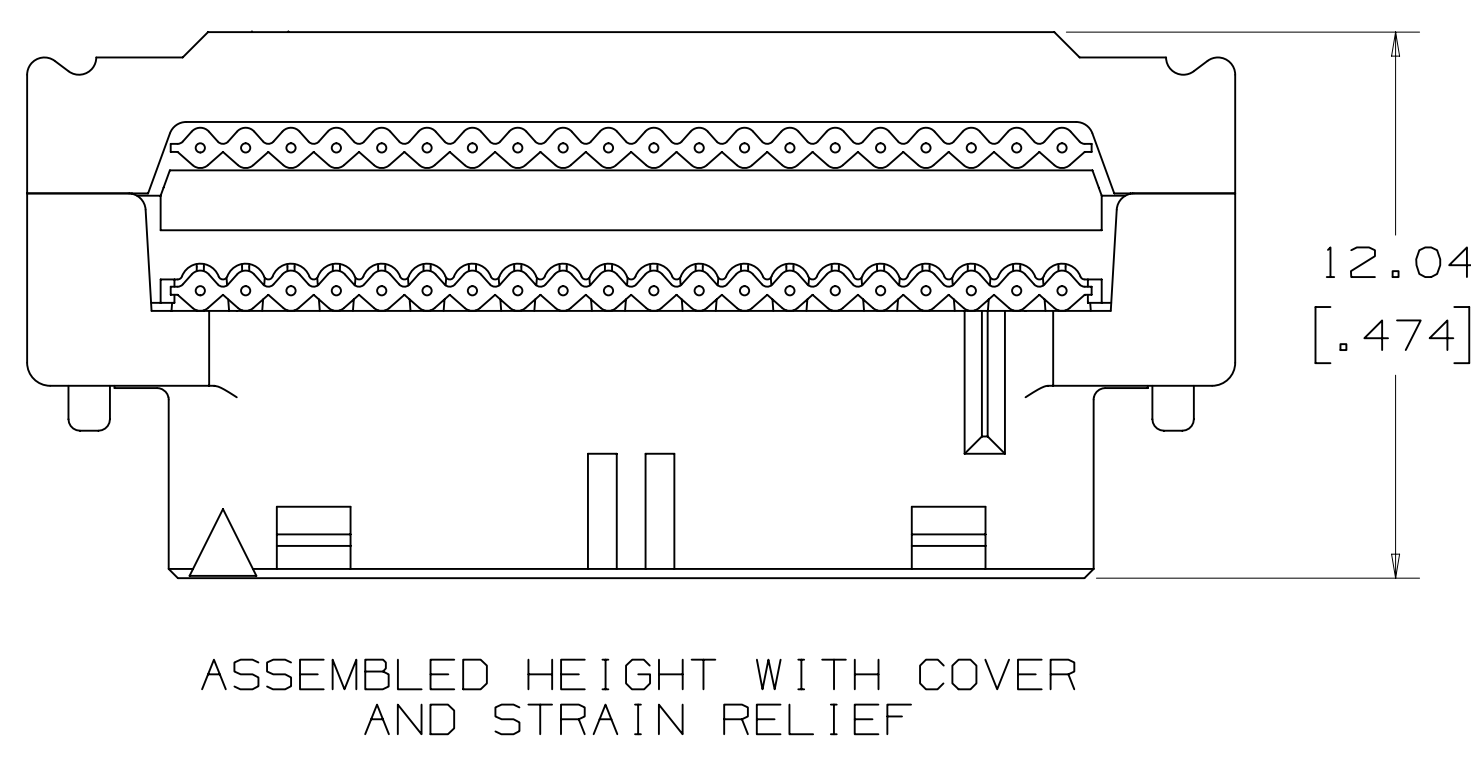
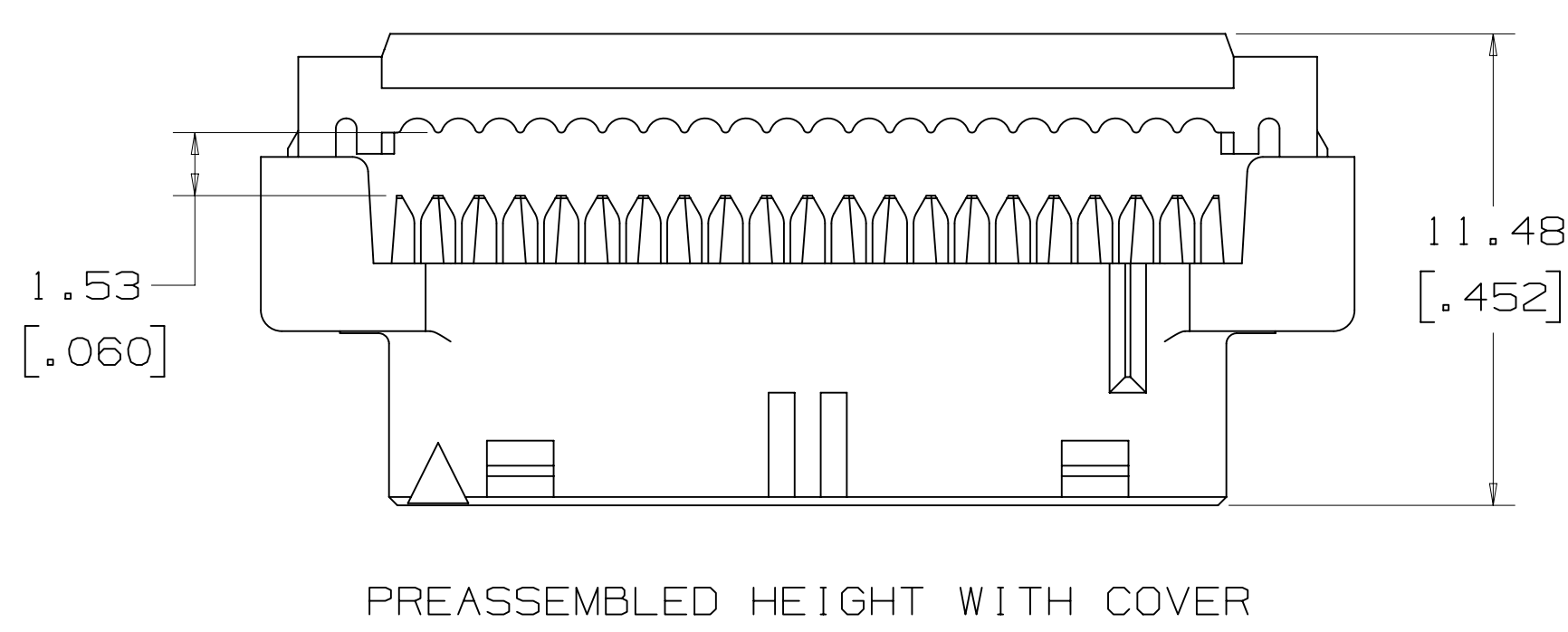
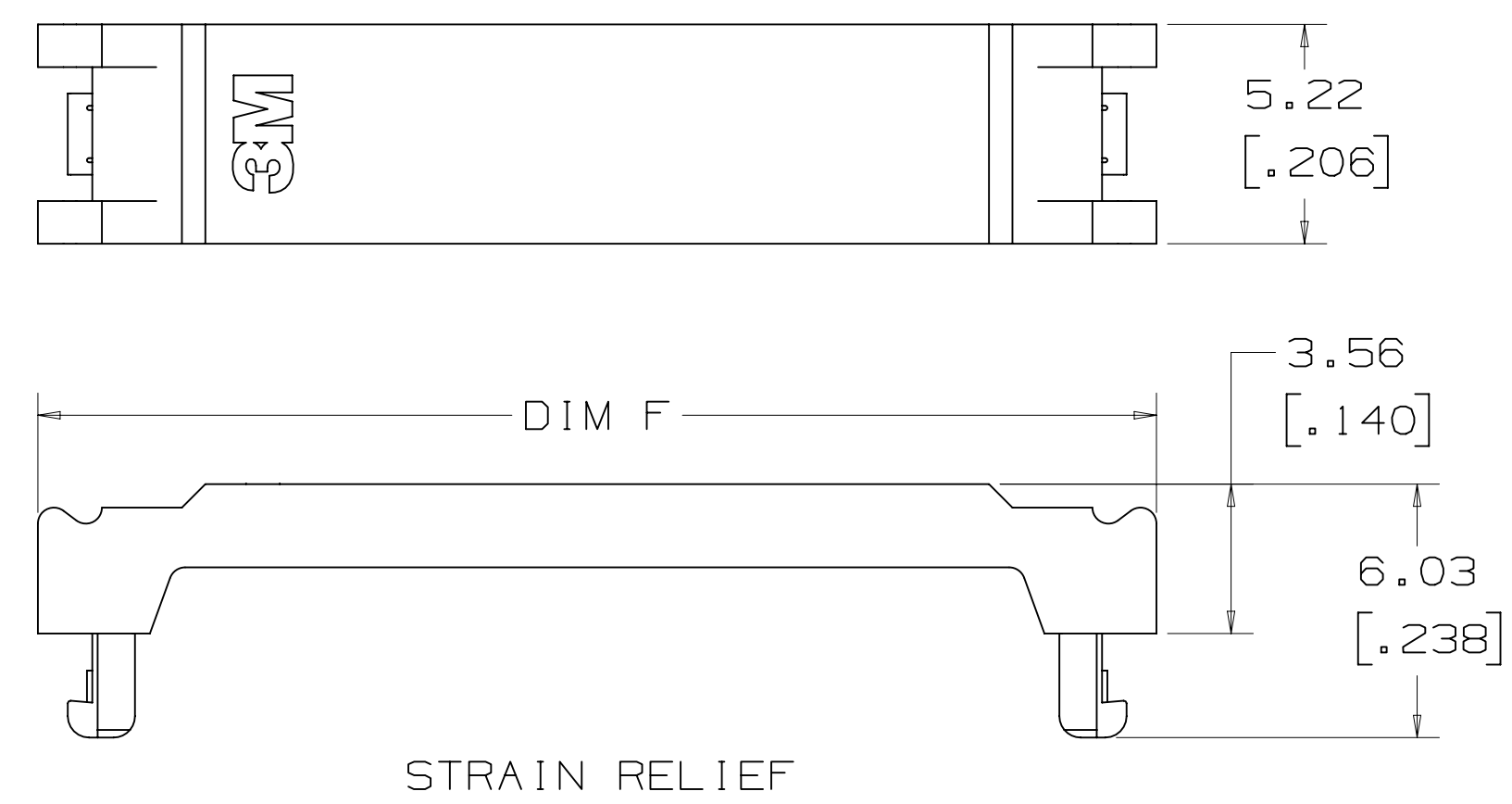


Technical drawing of a mechanical part showing dimensions in inches and millimeters. The drawing includes the following dimensions:

- DIM B**: Overall width dimension.
- 8.48** [0.334]: Dimension from the top surface to the bottom surface of the main body.
- 4.19** [0.165]: Dimension from the bottom surface to the top surface of the main body.
- 1.90** [0.075]: Dimension from the center of the main body to the center of the side feature.
- DIM G**: Dimension from the center of the main body to the center of the side feature.
- DIM A**: Overall length dimension.



DESIGN REFERENCE		NEXT ASSEMBLY		REV		ISSUE DATE AND DESCRIPTION		DRFT		CHKD	
ADDRES CODES				DRFT L. SCHMIDT		DATE JUL 23, 2010		MFG		DATE	
				CHKD		DATE		APPRV. S. FELDMAN		DATE JUL 30, 2010	
DIVISION				DIVISION CODE							
DO NOT SCALE DRAWING				SCALE 1/1				TOLERANCES EXCEPT AS NOTED			
				INCHES							
				THIRD ANGLE PROJECTION							
INTERPRET PER ASME Y14.5 - 2009				MILLIMETERS							
MAX SURFACE ROUGHNESS 125				<input checked="" type="checkbox"/> ALL SURFACES <input type="checkbox"/> MARKED ONLY				ANGLES ± 1°			
				3M Center St. Paul, MN 55144				© 2010 COPYRIGHT 2017 This document and the information it contains are 3M property and may not be reproduced or further distributed without 3M permission, or used or released other than for 3M authorized purposes. All rights reserved.			
TITLE				3M RIBBON CABLE SOCKET 2 MM x 2 MM PITCH 158 SERIES							
CAGE NUMBER				SIZE DRAWING NO.				REV.			
D				78-5100-2358-9				G			
MODEL				DET.				<input type="checkbox"/> TESTS <input type="checkbox"/> FLIES <input type="checkbox"/> NO			
				SHT 1 OF							

NOTES

- 1 MATERIAL:
BODY: HIGH TEMP GLASS
FILLED POLYESTER,
GRAY UL94V-0
CONTACTS: COPPER ALLOY
- 2 PLATING:
2.03-3.81 μm [80-150 μin]
NICKEL UNDERPLATE
0.38 μm [15 μin] OR
0.76 μm [30 μin] AVG
GOLD ON WIPING AREA.
- 3 RIBBON CABLE:
RECOMMENDED: 3M™ 3625
(28 AWG, 7 STRAND).
- 4 APPLICATION TOOLS:
3460 PRESS (OR EQUIVALENT)
3443-119 LOCATOR PLATE,
3442-9 PLATEN
SEE 3M INSTRUCTION SHEET
78-9101-2810-3.
- 5 MATES WITH 3M™ HEADERS
159 SERIES (REFERENCE 3M
DRAWING 78-5100-2359-7).
(0.51 mm [.020 in] SQ,
CROWNED PINS).
- 6 SEE THE REGULATORY
INFORMATION APPENDIX (RIA)
IN THE "RoHS COMPLIANCE"
SECTION OF
WWW.3MCONNECTOR.COM FOR
COMPLIANCE INFORMATION
(RIA E1 & C1 APPLY).
- 7 FOR PRODUCT SPECIFICATIONS
AND WARRANTY INFORMATION
SEE 3M 78-5102-0078-1.
- 8 IN THE EVENT OF CONFLICT
BETWEEN THIS DATA AND
THAT CONTAINED IN THE
PRODUCT SPECIFICATION,
THE PRODUCT SPECIFICATION
TAKES PRECEDENT.

METRIC [ENGLISH]

cALUS

UL FILE NO: E68080



R



1



1



C



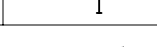

6

78-5100-2
DRAWING NUMBER

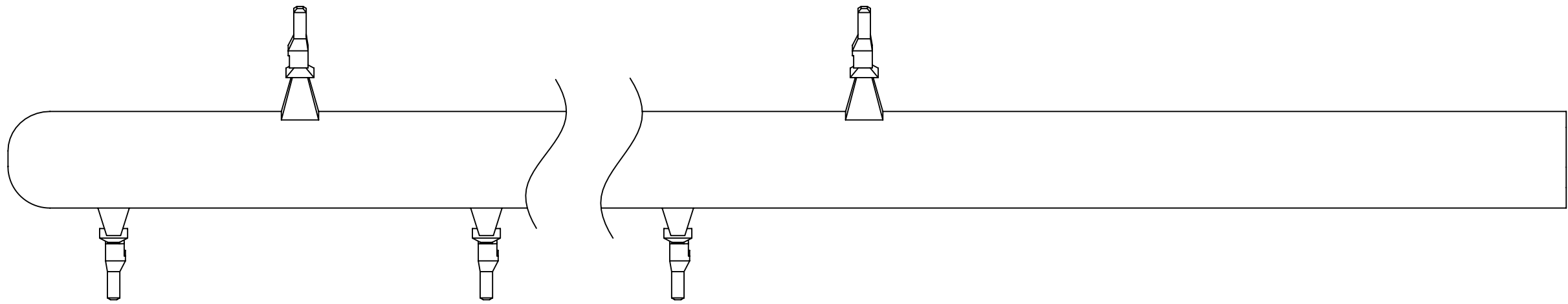
Offset



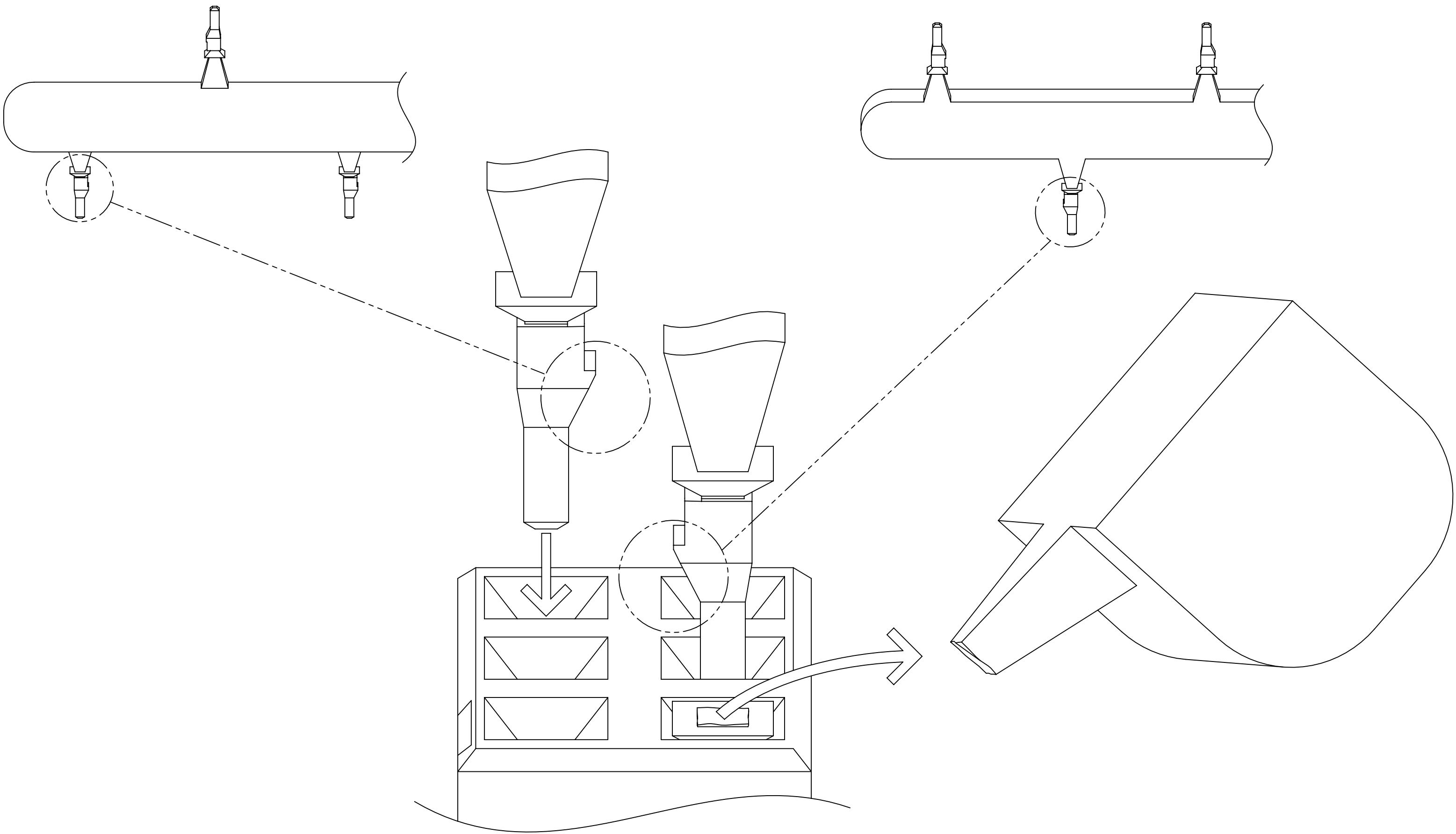
†

DESIGN REFERENCE				NEXT ASSEMBLY				REV		ECO		ISSUE DATE AND DESCRIPTION				DRFT		CHKD					
ASSEMBLY CODES								DRFT		L. SCHMIDT		DATE		JUL 23, 2010		MFG		DATE					
								CHKD				DATE				APPROV		S. FELDMAN					
																DATE		JUL 30, 2010					
DIVISION								DIVISION CODE															
DO NOT SCALE DRAWING				SCALE 6 1				TOLERANCES EXCEPT AS NOTED				 3M Center St. Paul, MN 55144 © 3M COPYRIGHT 2017 This document and the information it contains are 3M property and may not be reproduced or further distributed without 3M permission, or used or disclosed other than for 3M authorized purposes. All rights reserved.				TITLE				3M RIBBON CABLE SOCKET 2 MM x 2 MM PITCH 158 SERIES			
 THIRD ANGLE PROJECTION				 INCHES .0 .00 .000 .0000 ±				 MILLIMETERS 0 ± .5 .00 ± .13 .000 ± .005				MAX SURFACE ROUGHNESS 125 <input checked="" type="checkbox"/> ALL SURFACES <input type="checkbox"/> MARKED ONLY				CAGE NUMBER D 78-5100-2358-9				REV. G			
				ANGLES ± .005				MODEL				DET. LJS DES. LJS PYES YES NO NO SHT 2 OF 3											

3M™ Ribbon Cable Socket 2 mm X 2 mm Pitch 158 Series



POLARIZING KEY
3435-152200



POLARIZING KEY ORIENTATION AND INSTALLATION

RIBBON CABLE SOCKET ACCESSORIES

METRIC [ENGLISH]

G		73037		OCT 27, 2017		SBC		SAN					
				UPDATED PERFORMANCE TABLE									
				REMOVED REV D,E,F HISTORY									
A		30741		OCT 28, 2010				LDS		SF			
				INITIAL RELEASE									
REV		ECO		ISSUE DATE AND DESCRIPTION				DRFT		CHKD			
DRFT		L. SCHMIDT				DATE		JUL 23, 2010		MFG		DATE	
CHKD						DATE				APPR		DATE	
								S. FELDMAN		JUL 30, 2010			
DIVISION		DIVISION CODE											
DO NOT SCALE DRAWING		SCALE 1/1		TOLERANCES EXCEPT AS NOTED									
THIRD ANGLE PROJECTION				<div><div>INCHES</div><div><div>±.01</div><div>±.00</div><div>±.000</div><div>±.0000</div></div></div>									
INTERPRET PER ASME Y14.5 - 2009				<div><div>MILLIMETERS</div><div><div>±.02</div><div>±.05</div><div>±.13</div><div>±.005</div></div></div>									
MAX SURFACE ROUGHNESS 125		<div><div><input type="checkbox"/> ALL SURFACES</div><div><input checked="" type="checkbox"/> MARKED ONLY</div></div>		ANGLES ± °									

3M™ Ribbon Cable Socket 2 mm X 2 mm Pitch 158 Series

Technical Information: The technical information, recommendations and other statements contained in this document are based upon tests or experience that 3M believes are reliable, but the accuracy or completeness of such information is not guaranteed.

Product Use: Many factors beyond 3M's control and uniquely within user's knowledge and control can affect the use and performance of a 3M product in a particular application. Given the variety of factors that can affect the use and performance of a 3M product, user is solely responsible for evaluating the 3M product and determining whether it is fit for a particular purpose and suitable for user's method of application.

Warranty, Limited Remedy, and Disclaimer: Unless an additional warranty is specifically stated on the applicable 3M product packaging or product literature, 3M warrants that each 3M product meets the applicable 3M product specification at the time 3M ships the product. 3M MAKES NO OTHER WARRANTIES OR CONDITIONS, EXPRESS OR IMPLIED, INCLUDING, BUT NOT LIMITED TO, ANY IMPLIED WARRANTY OR CONDITION OF MERCHANTABILITY OR FITNESS FOR A PARTICULAR PURPOSE OR ANY IMPLIED WARRANTY OR CONDITION ARISING OUT OF A COURSE OF DEALING, CUSTOM OR USAGE OF TRADE. If the 3M product does not conform to this warranty, then the sole and exclusive remedy is, at 3M's option, replacement of the 3M product or refund of the purchase price.

Limitation of Liability: Except where prohibited by law, 3M will not be liable for any loss or damage arising from the 3M product, whether direct, indirect, special, incidental or consequential, regardless of the legal theory asserted, including warranty, contract, negligence or strict liability.

3M ELECTRONICS MATERIALS SOLUTIONS DIVISION
INTERCONNECT SOLUTIONS
<http://www.3m.com/Interconnect>

3M IS A TRADEMARK OF 3M COMPANY.
FOR TECHNICAL, SALES OR ORDERING
INFORMATION CALL 800-225-5373

DESIGN REFERENCE		NEXT ASSEMBLY		REV	ECO	ISSUE DATE AND DESCRIPTION		DRFT	CHKD
XREF CODES		XREF CODES		DWT		DATE		MFG	
				L. SCHMIDT		JUL 23, 2010		DATE	
				CHKD		DATE		APPRV	
						S. FELDMAN		JUL 30, 2010	
DIVISION		DIVISION CODE		© 3M COPYR[IGHT] 2017					
DO NOT SCALE DRAWING		SCALE 1/1		TOLERANCES EXCEPT AS NOTED		3M Center St. Paul, MN 55144			
THIRD ANGLE PROJECTION		INCHES		MILLIMETERS		This document and the information it contains are 3M property and may not be reproduced or further distributed without 3M permission, or used or disclosed other than for 3M authorized purposes. All rights reserved.			
INTERPRET PER ASME Y14.5 - 2009		0 ± .005		0 ± .005		TITLE			
MAX SURFACE ROUGHNESS 125		0 ± .005		0 ± .005		3M RIBBON CABLE SOCKET 2 MM x 2 MM PITCH 158 SERIES			
ALL SURFACES MARKED ONLY		ANGLES ± 1°		CAGE NUMBER		SIZE		DRAWING NO.	
				D		78-5100-2358-9		REV.	
				MODEL		DET		SHT 3 OF 3	
						YES		NO	