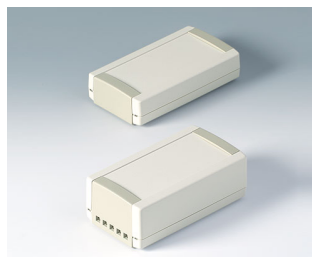
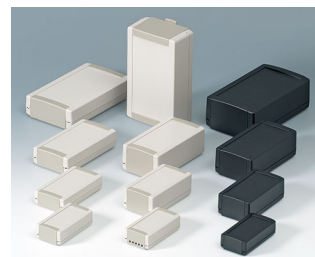


# TOPTEC

## Universal plastic enclosures

Our TOPTEC enclosures allow pre-assembled PCBs with protruding connectors and interfaces to be mounted directly into the case. It is no longer necessary to wire in the connectors after fitting the PCB into the enclosure - an excellent advantage.

- modern aesthetic design for indoor applications as desktop or wall mounted systems as well as DIN rail mounted devices
- simple and secure snap-together case assembly
- for security, a tool is required to open the case
- base part with lateral opening for quick and easy equipping from all sides
- clip-in end panels allow PCBs, pre-fitted with connectors, to fit straight in
- extensive range of 28 models
- type F with flat top molding
- type H with high top molding
- versions with or without ventilation slots
- ventilation slots can also be used for gas detection and sound
- discreet wall mounting facility; the hidden wall suspension element, with fast release tab, snaps into apertures on the underside of the base
- optional DIN rail mounting clip
- protection class IP 40
- recess in top for a membrane keypad or label
- internal screw pillars for PCBs etc.



# TOPTEC

## Applications and Examples

Universal enclosures for electronic and electro-technical devices. For example

- Monitoring purposes as check instruments
- Signalling equipment
- Control systems
- Medical and wellness devices
- Laboratory technology
- Computer peripherals
- IoT/IIoT



Adaptive multicontroller for single sensors



IR-Controlbox



MPI adapter



PROFIBUS radio system

## View Customizing Options

What do you still need for your own very personal product? We can supply enclosures and tuning knobs with all necessary modifications for fitting your electronic components. Customizing options for Topotec



Machining



Lacquering



Printing / Laser marking



Decor foils



Special material



RFI/EMI shielding



Installation / Assembly of accessories

# TOPTEC

## Select Versions



**B1040365**  
 TOPTEC 102, Vers. I  
 ABS (UL 94 HB)  
 off-white RAL 9002  
 4.02"x2.13"x1.18"  
 IP 40



**B1040369**  
 TOPTEC 102, Vers. I  
 ABS (UL 94 HB)  
 black RAL 9005  
 4.02"x2.13"x1.18"  
 IP 40



**B1040465**  
 TOPTEC 102, Vers. II  
 ABS (UL 94 HB)  
 off-white RAL 9002  
 4.02"x2.13"x1.18"  
 IP 40



**B1040469**  
 TOPTEC 102, Vers. II  
 ABS (UL 94 HB)  
 black RAL 9005  
 4.02"x2.13"x1.18"  
 IP 40



**B1050365**  
 TOPTEC 123 H, Vers. I  
 ABS (UL 94 HB)  
 off-white RAL 9002  
 4.84"x2.68"x1.77"  
 IP 40



**B1050369**  
 TOPTEC 123 H, Vers. I  
 ABS (UL 94 HB)  
 black RAL 9005  
 4.84"x2.68"x1.77"  
 IP 40



**B1050465**  
 TOPTEC 123 H, Vers. II  
 ABS (UL 94 HB)  
 off-white RAL 9002  
 4.84"x2.68"x1.77"  
 IP 40



**B1050469**  
 TOPTEC 123 H, Vers. II  
 ABS (UL 94 HB)  
 black RAL 9005  
 4.84"x2.68"x1.77"  
 IP 40



**B1055365**  
 TOPTEC 123 F, Vers. I  
 ABS (UL 94 HB)  
 off-white RAL 9002  
 4.84"x2.68"x1.18"  
 IP 40



**B1055369**  
 TOPTEC 123 F, Vers. I  
 ABS (UL 94 HB)  
 black RAL 9005  
 4.84"x2.68"x1.18"  
 IP 40



**B1055465**  
 TOPTEC 123 F, Vers. II  
 ABS (UL 94 HB)  
 off-white RAL 9002  
 4.84"x2.68"x1.18"  
 IP 40



**B1055469**  
 TOPTEC 123 F, Vers. II  
 ABS (UL 94 HB)  
 black RAL 9005  
 4.84"x2.68"x1.18"  
 IP 40



**B1060365**  
 TOPTEC 154 H, Vers. I  
 ABS (UL 94 HB)  
 off-white RAL 9002  
 6.06"x3.31"x2.20"  
 IP 40



**B1060369**  
 TOPTEC 154 H, Vers. I  
 ABS (UL 94 HB)  
 black RAL 9005  
 6.06"x3.31"x2.20"  
 IP 40



**B1060465**  
 TOPTEC 154 H, Vers. II  
 ABS (UL 94 HB)  
 off-white RAL 9002  
 6.06"x3.31"x2.20"  
 IP 40



**B1060469**  
 TOPTEC 154 H, Vers. II  
 ABS (UL 94 HB)  
 black RAL 9005  
 6.06"x3.31"x2.20"  
 IP 40

# TOPTEC



**B1065365**  
TOPTEC 154 F, Vers. I  
ABS (UL 94 HB)  
off-white RAL 9002  
6.06"x3.31"x1.50"  
IP 40



**B1065369**  
TOPTEC 154 F, Vers. I  
ABS (UL 94 HB)  
black RAL 9005  
6.06"x3.31"x1.50"  
IP 40



**B1065465**  
TOPTEC 154 F, Vers. II  
ABS (UL 94 HB)  
off-white RAL 9002  
6.06"x3.31"x1.50"  
IP 40



**B1065469**  
TOPTEC 154 F, Vers. II  
ABS (UL 94 HB)  
black RAL 9005  
6.06"x3.31"x1.50"  
IP 40



**B1070365**  
TOPTEC 194 H, Vers. I  
ABS (UL 94 HB)  
off-white RAL 9002  
7.64"x4.53"x2.68"  
IP 40



**B1070369**  
TOPTEC 194 H, Vers. I  
ABS (UL 94 HB)  
black RAL 9005  
7.64"x4.53"x2.68"  
IP 40



**B1070465**  
TOPTEC 194 H, Vers. II  
ABS (UL 94 HB)  
off-white RAL 9002  
7.64"x4.53"x2.68"  
IP 40



**B1070469**  
TOPTEC 194 H, Vers. II  
ABS (UL 94 HB)  
black RAL 9005  
7.64"x4.53"x2.68"  
IP 40



**B1075365**  
TOPTEC 194 F, Vers. I  
ABS (UL 94 HB)  
off-white RAL 9002  
7.64"x4.53"x1.81"  
IP 40



**B1075369**  
TOPTEC 194 F, Vers. I  
ABS (UL 94 HB)  
black RAL 9005  
7.64"x4.53"x1.81"  
IP 40

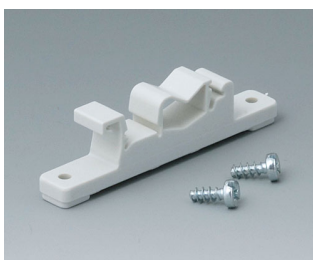


**B1075465**  
TOPTEC 194 F, Vers. II  
ABS (UL 94 HB)  
off-white RAL 9002  
7.64"x4.53"x1.81"  
IP 40



**B1075469**  
TOPTEC 194 F, Vers. II  
ABS (UL 94 HB)  
black RAL 9005  
7.64"x4.53"x1.81"  
IP 40

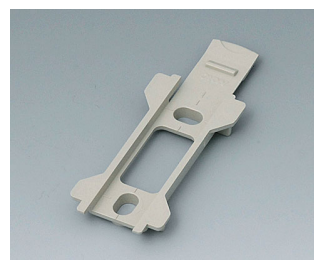
## Accessory "wall/holder"



**B1300017**  
Fastening element for DIN-Rails  
PA 6  
off-white RAL 9002



**B1300019**  
Fastening element for DIN-Rails  
PA 6  
black RAL 9005



**B1340028**  
Wall suspension element for  
Topotec 102  
PC+ABS (UL 94 V-0)  
pebble gray RAL 7032



**B1340029**  
Wall suspension element for  
Topotec 102  
ABS (UL 94 HB)  
black RAL 9005

# TOPTEC



**B1350028**  
Wall suspension element for  
Toptec 123  
PC+ABS (UL 94 V-0)  
pebble gray RAL 7032



**B1350029**  
Wall suspension element for  
Toptec 123  
ABS (UL 94 HB)  
black RAL 9005



**B1360028**  
Wall suspension element for  
Toptec 154  
PC+ABS (UL 94 V-0)  
pebble gray RAL 7032



**B1360029**  
Wall suspension element for  
Toptec 154  
ABS (UL 94 HB)  
black RAL 9005



**B1370028**  
Wall suspension element for  
Toptec 194  
PC+ABS (UL 94 V-0)  
pebble gray RAL 7032



**B1370029**  
Wall suspension element for  
Toptec 194  
ABS (UL 94 HB)  
black RAL 9005

## Accessory "screws"



**A0305031**  
Self-tapping screws 0.098" x  
0.236" (PZ1)



**A9199008**  
Set of screws

## Accessory



**A9207150**  
Anti-slide feet 0.256" x 0.079"  
transparent

Subject to technical modification without notice. © by OKW Gehäusesysteme, Buchen/Germany.