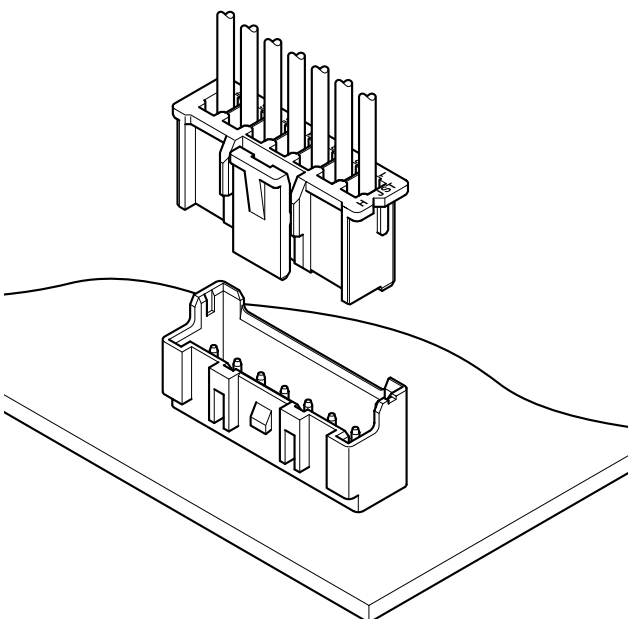
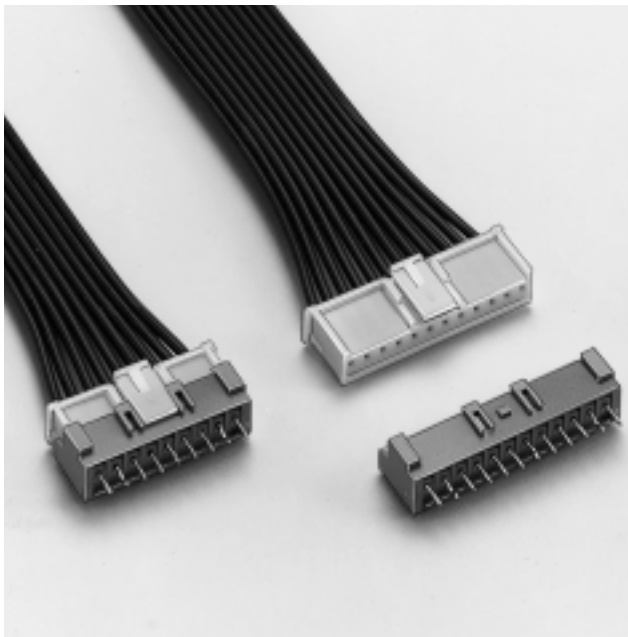


# XA CONNECTOR

*Disconnectable Crimp style connectors*



## Features

### • Locking device

The housing has a locking device to securely hold the header, preventing accidental disconnection because of external forces that might result from the routing of wires during assembly process or of vibration.

### • Solder crack preventive material

Header wafer is made of glass-filled PA66 nylon thus effective against the solder crack problem.

### • Low insertion force

Header pins are round and reflow-treated, which provides low insertion force.

### • Insertion guide mechanism

Header has housing insertion guides for easy and secure insertion.

### • Applicable to automatic board mounting machine

Radial taped or stick-mounted headers are also available for automatic component insertion machine.

### • Polarizing boss

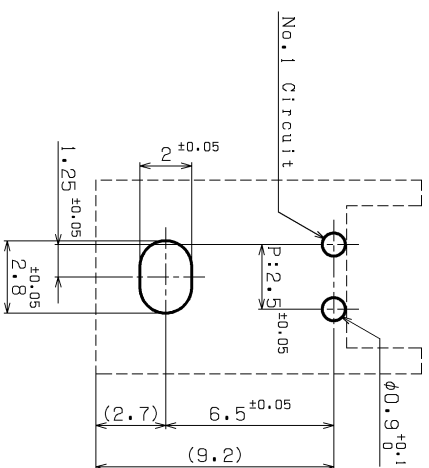
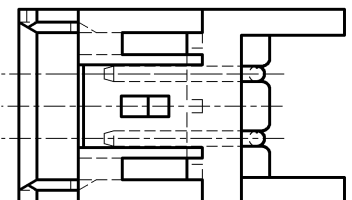
Headers with polarizing bosses are also available.

## Specifications

- Current rating: 3A AC DC (AWG#20)
- Voltage rating: 250V AC DC
- Temperature range: -25°C to +85°C  
(including temperature rise in applying electrical current)
- Relative humidity: 0 to 80%
- Contact resistance: Initial value/10m Ω max.  
After environmental testing/20m Ω max.
- Insulation resistance: 1,000M Ω min.
- Withstanding voltage: 1,000V AC/minute
- Applicable wire: AWG #28 to #20
- Applicable PC board thickness: 1.6mm (.063")
- \* Contact JST if Lead-Free product is required.
- \* Refer to "General Instruction and Notice when using Terminals and Connectors" at the end of this catalog.
- \* Contact JST for details.

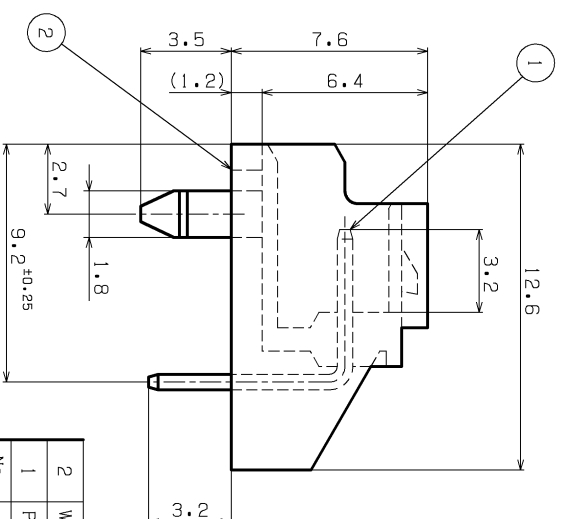
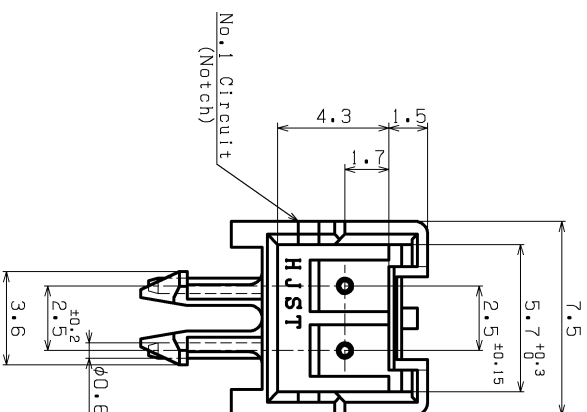
## Standards


- Recognized E60389
- 1 Certified LR20812
- 2 R9851220



NOTE
1. Unless otherwise specified, tolerances are 0<L≤5.0:±0.3 5.0<L :±0.4

Recommendable P.C.Board hole layout  
(Viewing from component side.)



2	WAFER	66NYLON (G.F.)			UL94V-0, NATURAL
1	PIN	COPPER ALLOY		COPPER-UNDERPLATED TIN-PLATED	
No.	PART NAME	MATERIAL		SURFACE FINISH	REMARKS
SIZE	UNIT	SCALE	PROJECTION	DATE	CUSTOMER
A3	METRIC	5:1		DEC.21.2004	
APPROVED	CHECKED	DESIGNED	DRAWN	SERIES NAME	
S.K		T.S	A.M	PART No.	XA CONNECTOR
				PART No.	S02B-XASS-1 (LF) (SN)
				DRAWING No.	KRD-35898 RO

THIS DRAWING CONTAINS INFORMATION THAT IS PROPRIETARY TO J.S.T.  
AND SHOULD NOT BE USED WITHOUT WRITTEN PERMISSION.