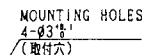


(表1) タンシ厚さ一覧

RECOMMENDED P. C. BOARD LAYOUT
(MOUNTING FACE SIDE)

推獎基板取付寸法図
(実装面側)



PATTERN MUST NOT BE EXPOSED
(パターン露出不可領域)

NO PART MOUNTING
(部品実装禁止領域)

NO PART MOUNTING
(部品実装禁止領域)

12. OPTION (TOP COVER) IS ATTACHED.
(オプション(上カバー) 取付け)
11. SHOW DIMENSIONS WITHIN 10mm OF END OF INSERTED CARD.
(カード挿入後10mm以内の寸法を示す。)
10. SHOW PIN ROOT DIMENSIONS.
(ピン根部寸法を示す。)
9. SHOW P, C, BOARD MOUNTING DIMENSIONS.
(P、C、ボード取付け寸法を示す。)
8. RECOMMENDED TIGHTENING TORQUE: 0.127N・m(1.3kgf・cm)
(推奨の締め付けトルク: 0.127N・m(1.3kgf・cm))
7. FOUR SIZE M2xP0.4 SCREWS WITH WASHER (CUSTOMER SUPPLIED) ARE REQUIRED FOR FASTENING CONNECTOR TO P.C. BOARD.
(顧客の提供するM2xP0.4のネジ4本とワッシャー4本が必要。)
6. DETERMINE MOUNTING SCREW LENGTH UPON CHECKING P.C. BOARD THICKNESS AND 'I' DIMENSION.
(「I」寸法を確認し、取付けネジの長さおよびネジの長さから「I」寸法を引くこと。)
5. SEE TABLE FOR PIN CONTACT LENGTH.
(ピン接触長さに従う。)
4. SEE "RE-AB" BOARD CONNECTOR PRODUCT DRAWING FOR RECOMMENDED PATTERN DIMENSIONS.
(推奨のパターン寸法は、RE-AH-Bドココタの図面を参照。)
3. THIS PRODUCT USED WITH "RE-AB" BOARD CONNECTOR.
(本品は、RE-AH-Bドココタと組み合わせて使用する。)
2. BODY AND KNOB COLOR IS BLACK.
(本体とダイヤルは黒色。)

NOTE 1. THIS PRODUCT IS STANDARD TYPE, RIGHT SIDE KNOB TYPE.

[illegible]

BERG
ELECTRONICS

TITLE: SLOT CONNECTOR
(E.I. -AC SERIES)

SCALE	SIZE	DWG. NO.	REV	SHEET
2/1	C	62216	B	1 OF 3

62216-00410

M2xP0.4
4-SPACE
(取付部)

2.8MIN EFFECTIVE INTERNAL
SCREW THREAD LENGTH →
(有効ねじ部)

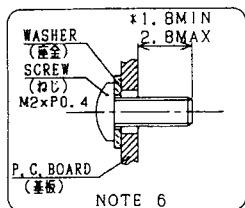
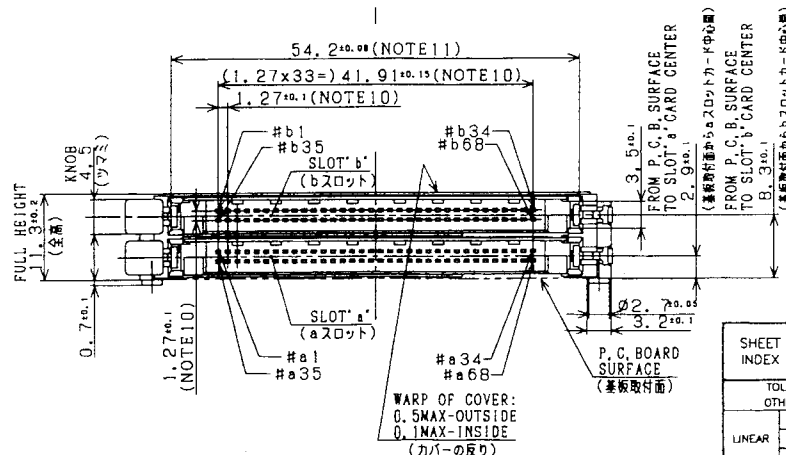


TABLE1 PIN CONTACT LENGTH LIST
(表1 タンシ長さ一覧)

PIN # (タンシ番号)	L (mm)
a1, a17, a34, a35, a51, a68 b1, b17, b34, b35, b51, b68	5.00±0.1
a36, a67, b36, b67	3.50±0.1
OTHER (上記以外)	4.25±0.1

[illegible]

RECOMMENDED P. C. BOARD LAYOUT
(MOUNTING FACE SIDE)

推奨基板取付寸
(実装面側)

12. OPTION (TOP COVER) IS ATTACHED.

(オプション(上カバー)装品)

11. SHOW DIMENSIONS WITHIN 10mm

(カードかん合面より10mm距離の寸法を示す.)

10. SHOW PIN ROOT DIMENSIONS

(タソシ量元寸法を示す.)

9. SHOW P. C. BOARD MOUNTING DIMENSIONS

(正数実数 α の寸法を示す.)

8. RECOMMENDED TIGHTENING TORQUE: 0.127N·m

(ネジ締め作業時付トルク:0.127N・m[1.3kgf・cm])

7. FOUR SIZE M2xP0.4 SCREWS WITH WASHER (CUSTOMER SUPPLIED)
ARE REQUIRED FOR FASTENING CONNECTOR TO 2.5 BOARD

ARE REQUIRED FOR FASTENING CONNECTOR TO P.C. BOARD

6. DETERMINE MOUNTING SCREW LENGTH UPON CHECKING B & BOARD THICKNESS AND "S" DIMENSION

8. DETERMINE MOUNTING SCREW LENGTH UPON CHECKING P.C. BOARD
("X" SHOWS REQUIRED SCREW LENGTH FROM MOUNTING SURFACE

1844-1845

5. SEE TABLE FOR PIN CONTACT LENGTH

(A) (二) 原方材料 (15 元)

4. SEE 'RE-4H' BOARD CONNECTOR PROBLEM

7-10-68 PC-104-K7300

3. THIS PRODUCT USED WITH "RE-AR" BOARD.

(FBI FILE - 44-38861 - SUB B - RACIAL MATTERS)

2. BODY AND KNOB COLOR IS BLACK

(本集の「マツミの金魚」)

1. THIS PRODUCT IS STANDARD TYPE LEFT SIDE KNOB TYPE

NOTE 1. THIS PRODUCT IS STANDARD TYPE.
(注) (本型、スタンダードタイプ、最も普及を期し。)

[illegible]

BERG
ELECTRONICS

TITLE	SLOT CONNECTOR (EJ -AC SERIES)
-------	-------------------------------------

SCALE	SIZE	DWG. NO.	REV	SHEET
2/1	C	62216	A	2 of 3

DF-DO-3A REV C

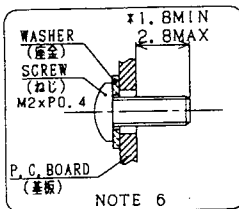
DO NOT SCALE PRINT THIS INFORMATION IS CONFIDENTIAL AND IS DISCLOSED TO YOU ON CONDITION THAT NO FURTHER DISCLOSURE IS MADE BY YOU TO OTHER THAN BERIC PERSONNEL WITHOUT WRITTEN AUTHORIZATION FROM BERIC ELECTRONICS JAPAN K.K.

PDM: Rev: B STATUS: Released

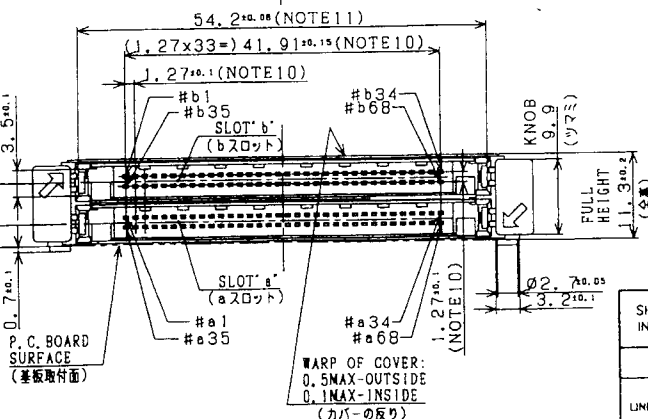
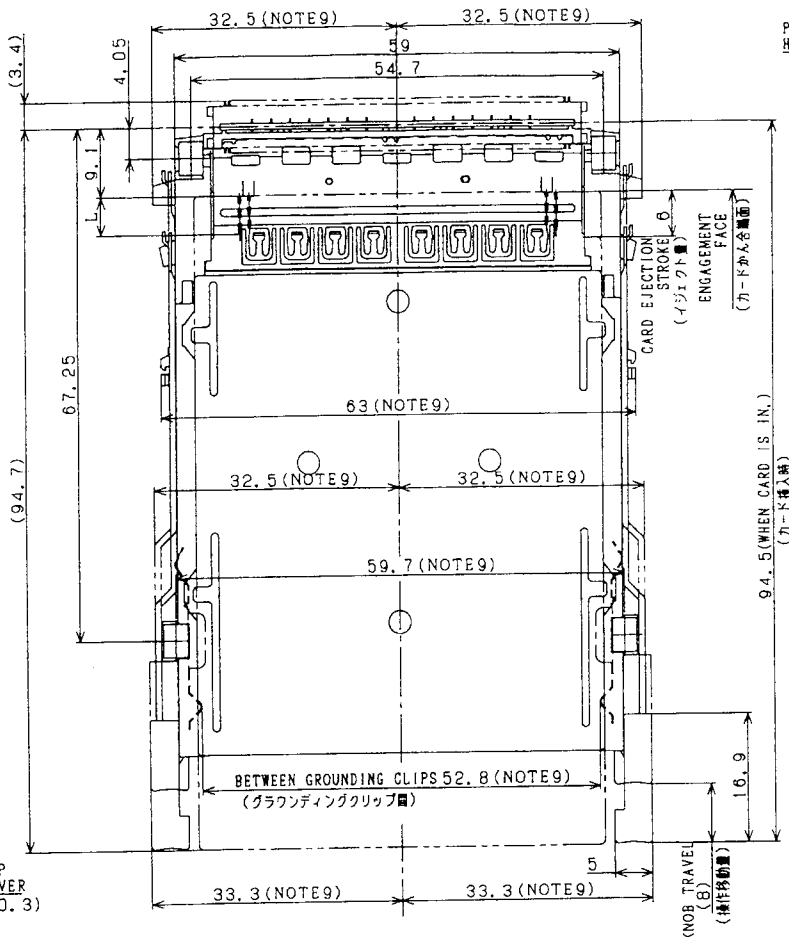
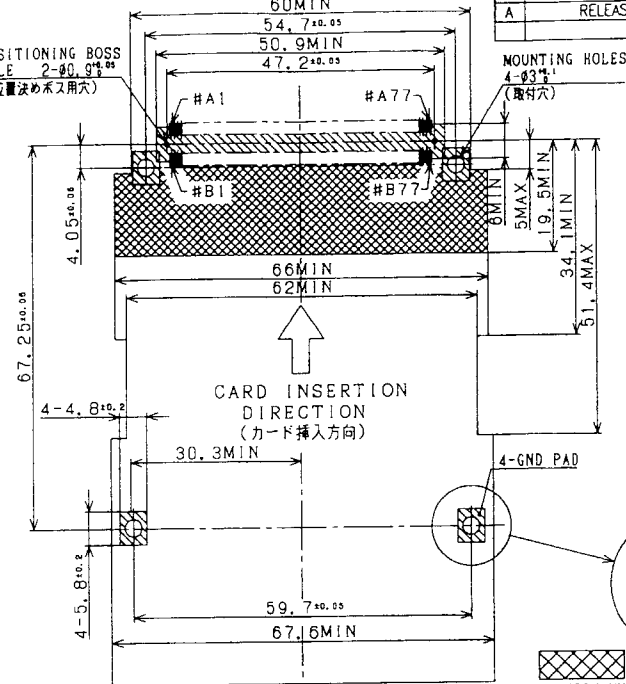
Printed: Aug 25, 2005

PRODUCT NO.

62216-00LRO

BOARD CONNECTOR
(ボードコネクタ)4-SPACER
M2xP0.4
(取り付け部)
2.8MIN EFFECTIVE INTERNAL
SCREW THREAD LENGTH
(有効ねじ部)TOP COVER
(ト.3)TABLE1 PIN CONTACT LENGTH LIST
(表1 タンシ長さ一覧)

PIN # (タンシ番号)	L (mm)
a1, a17, a34, a35, a51, a68 b1, b17, b34, b35, b51, b68	5.00±0.1
a36, a67, b36, b67	3.50±0.1
OTHER (上記以外)	4.25±0.1

FROM P.C.B. SURFACE
TO SLOT "b" CARD CENTER
8.3±0.1
(基板表面からbスロットカード中心)
FROM P.C.B. SURFACE
TO SLOT "a" CARD CENTER
2.9±0.1
(基板表面からaスロットカード中心)POSITIONING BOSS
HOLE 2-φ0.9±0.05
(位置決めボス用穴)RECOMMENDED P.C. BOARD LAYOUT
(MOUNTING FACE SIDE)推奨基板取付寸法図
(実装面側)PATTERN MUST NOT BE EXPOSED
(パターン露出不可領域)NO PART MOUNTING
(部品実装禁止領域)NO PART MOUNTING
(部品実装禁止領域)

12. OPTION (TOP COVER) IS ATTACHED.

(オプション(上カバー)取付時)

11. SHOW DIMENSIONS WITHIN 10mm OF END OF INSERTED CARD.

(カード挿入後10mm以内の寸法を示す)

10. SHOW PIN ROOT DIMENSIONS.

(ピン根元寸法を示す)

9. SHOW P.C. BOARD MOUNTING DIMENSIONS.

(基板取付寸法を示す)

8. RECOMMENDED TIGHTENING TORQUE: 0.127N·m (1.3kgf·cm)

(3.2mm径ボス取付時: 0.127N·m (1.3kgf·cm))

7. FOUR SIZE M2xP0.4 SCREWS WITH WASHER (CUSTOMER SUPPLIED)

ARE REQUIRED FOR FASTENING CONNECTOR TO P.C. BOARD.

(基板に4mm径M2xP0.4のネジとワッシャー(お客様提供)を4箇所取付)

6. DETERMINE MOUNTING SCREW LENGTH UPON CHECKING P.C. BOARD THICKNESS AND "t" DIMENSION.

("t" SHOWS REQUIRED SCREW LENGTH FROM MOUNTING SURFACE.)

(取付ネジの長さ、基板の厚みと取付面の厚みから決定すること)

5. SEE TABLE1 FOR PIN CONTACT LENGTH.

(タンシ長さを参照)

4. SEE "RE-AH" BOARD CONNECTOR PRODUCT DRAWING FOR RECOMMENDED PATTERN DIMENSIONS.

(推奨パターン寸法は、RE-AH-PCコネクタの図面を参照)

3. THIS PRODUCT USED WITH "RE-AH" BOARD CONNECTOR.

(本製品は、RE-AH-PCコネクタと組み合わせて使用される)

2. BODY AND KNOB COLOR IS BLACK.

(本体とツマミの色は黒)

NOTE 1. THIS PRODUCT IS STANDARD TYPE, BOTH SIDE KNOB TYPE.

(注意) (本製品は、スタンダードタイプ、両側ツマミ取付型)

SHEET INDEX	ISSUE				
	SH NO.				
TOLERANCES UNLESS OTHERWISE SPECIFIED	MAI	DR	DATE	CUSTOMER COPY	TITLE SLOT CONNECTOR (EJ - AC SERIES)
	SEE NOTE	ENGR	4/21/98		
LINEAR	FINISH	CHK	4/21/98	THIRD ANGLE PROJ	SCALE 2/1
		APPR	4/21/98	UNIT MM	
ANGLES					SIZE C
					DWG. NO. 62216
					REV A
					SHEET 3 OF 3

BERG
ELECTRONICSSLOT CONNECTOR
(EJ - AC SERIES)SCALE
2/1
C
DWG. NO.
62216
REV
A
SHEET
3 OF 3