

NOTES

- 1 - UNIT INCLUDES 2X CATALOG LISTING V3-201 BASIC SWITCHES
2 - NUMERICAL SWITCH IDENTIFICATION MARKED ON BASIC SWITCHES
NEXT TO COMMON TERMINAL

CONTACT ARRANGEMENT
2X S P D T

15A-1/3 HP-125 OR 250 VAC
1/2A-125 VDC; 1/4A-250 VDC

THIS DRAWING COVERS A PROPRIETARY ITEM AND IS THE PROPERTY OF MICRO SWITCH, A DIVISION OF HONEYWELL. THIS DRAWING IS NOT TO BE COPIED OR USED WITHOUT THE APPROVAL OF MICRO SWITCH.

MICRO SWITCH
a Honeywell Division

**ASSEMBLY-
TOGGLE SWITCH**

CATALOG LISTING

111AT2

THIRD ANGLE PROJECTION

FULL

SCALE

DO NOT SCALE PRINT

UNLESS OTHERWISE SPECIFIED
TOLERANCES ARE

ONE PLACE (.0) ±.030

TWO PLACES (.00) ±.015

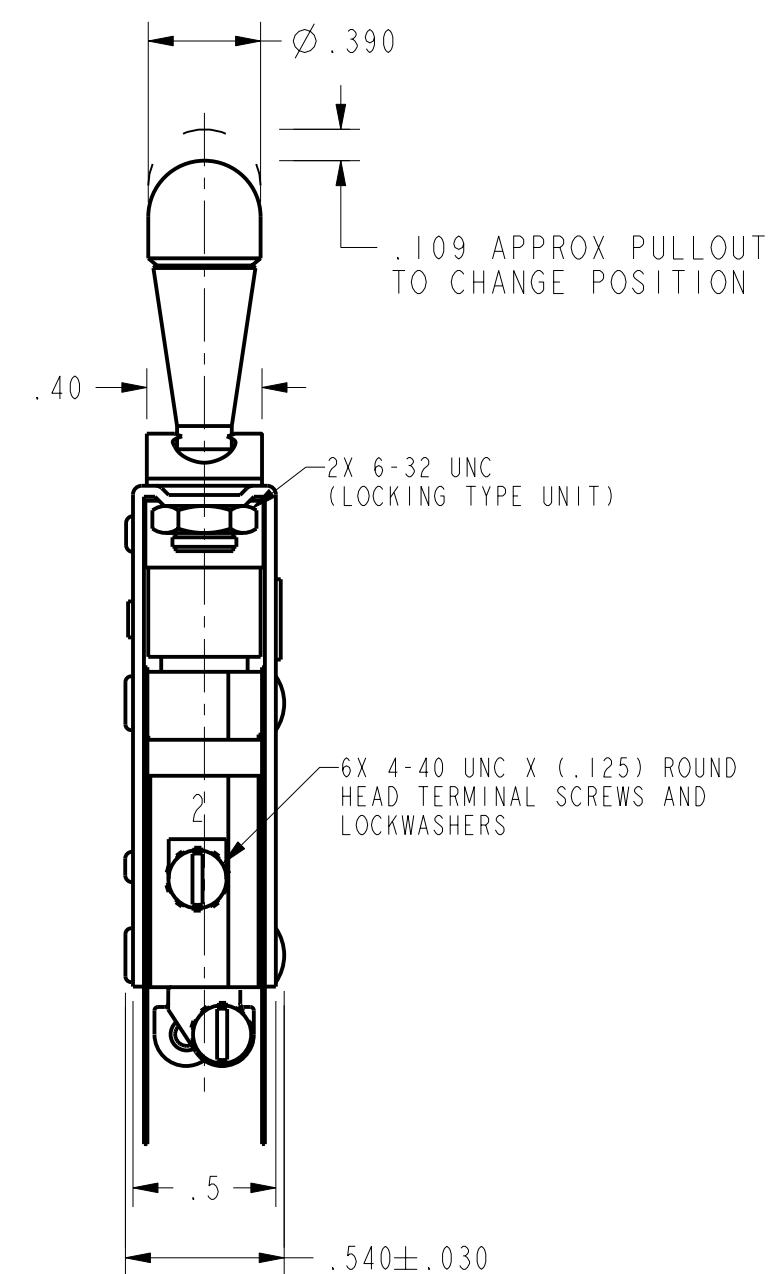
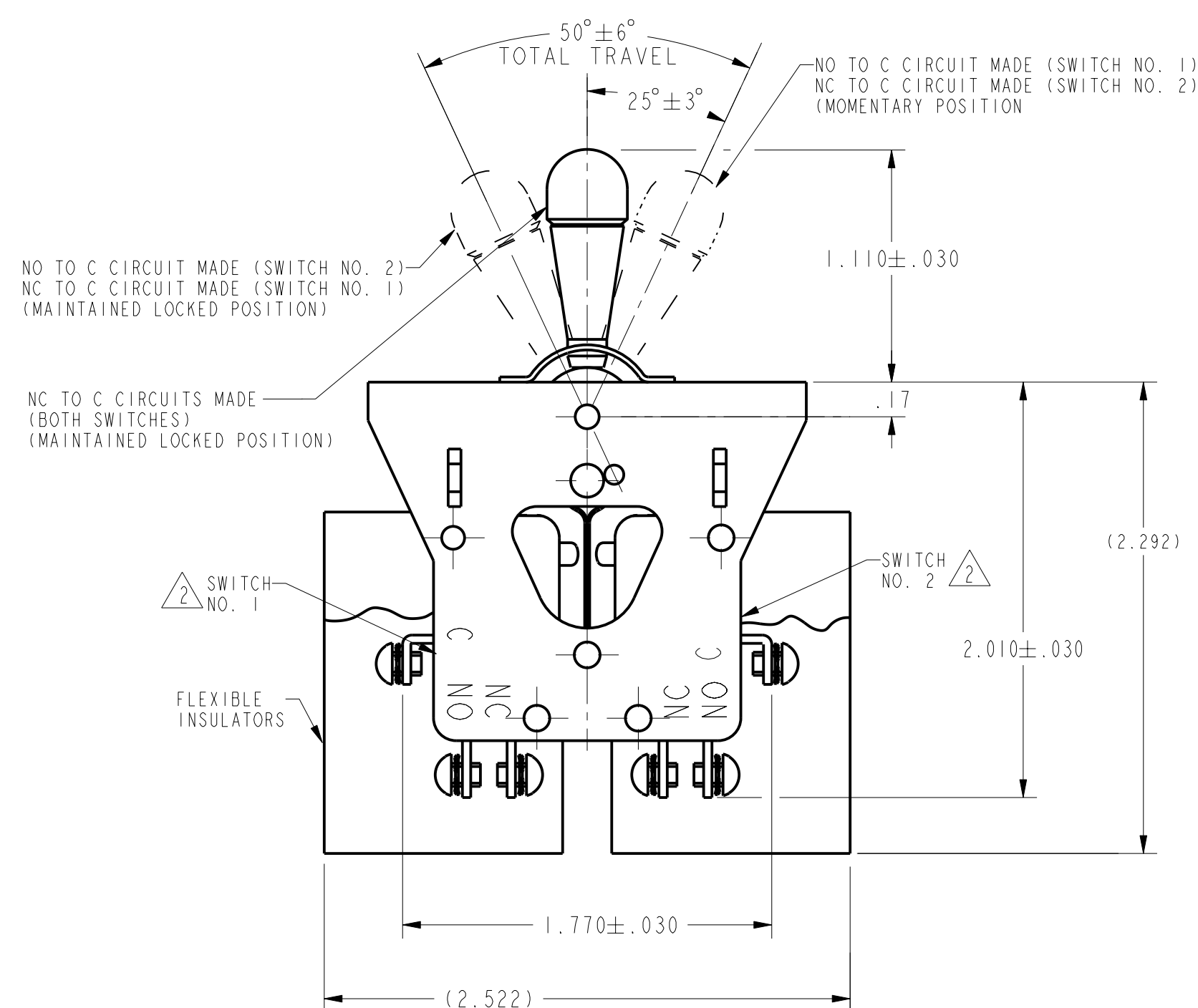
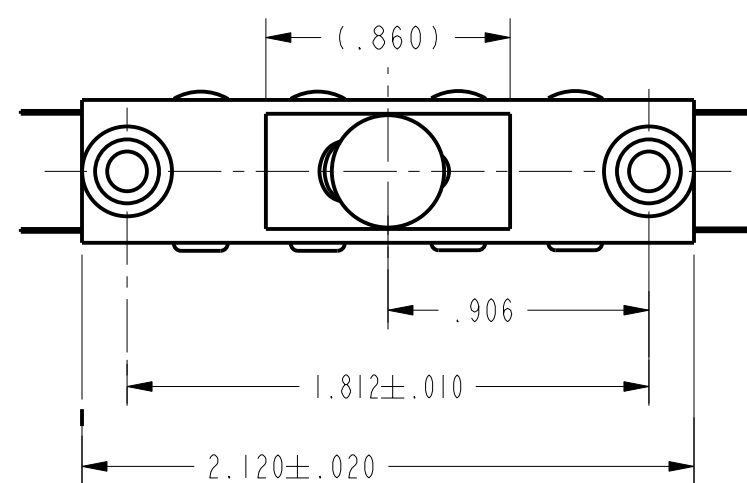
THREE PLACES (.000) ±.005

ANGLES ±X

WEIGHT

ANSI Y14.5M-1982 APPLIES

FED. MFG. CODE 91929



NOTES

- 1 - UNIT INCLUDES 2X CATALOG LISTING V3-201 BASIC SWITCHES
2 - NUMERICAL SWITCH IDENTIFICATION MARKED ON BASIC SWITCHES
NEXT TO COMMON TERMINAL

CONTACT ARRANGEMENT
2X S P D T

15A-1/3 HP-125 OR 250 VAC
1/2A-125 VDC; 1/4A-250 VDC

THIS DRAWING COVERS A PROPRIETARY ITEM AND IS THE PROPERTY OF MICRO SWITCH, A DIVISION OF HONEYWELL. THIS DRAWING IS NOT TO BE COPIED OR USED WITHOUT THE APPROVAL OF MICRO SWITCH.

MICRO SWITCH
a Honeywell Division

**ASSEMBLY-
TOGGLE SWITCH**

CATALOG LISTING

111AT2

THIRD ANGLE PROJECTION

FULL

SCALE

DO NOT SCALE PRINT

UNLESS OTHERWISE SPECIFIED
TOLERANCES ARE

ONE PLACE (.0) ±.030

TWO PLACES (.00) ±.015

THREE PLACES (.000) ±.005

ANGLES ±X

WEIGHT

ANSI Y14.5M-1982 APPLIES

FED. MFG. CODE 91929