

PRODUCT NUMBER NOTE 4	PLATING
221-F	O B S O L E T E
221-FLF	150 μ INCH MIN. 100% MATTE TIN

NOTES:

- ①. SPACER MATERIAL: PPA 45% GLASS REINFORCED, COLOR: BLACK,
FLAME RETARDANT PER UL 94V-0.

TERMINAL MATERIAL: C72500

2. COMPLIANT PRESS-FIT PINS - FOUR

INSERTION FORCE: 90 lbs TYPICAL (240 MAX)

RETENTION FORCE: 35 lbs TYPICAL (10 lbs MIN) AT TAB

PLATED THROUGH HOLE SIZE: .039 - .044

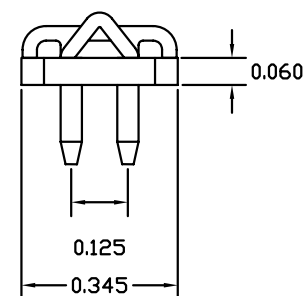
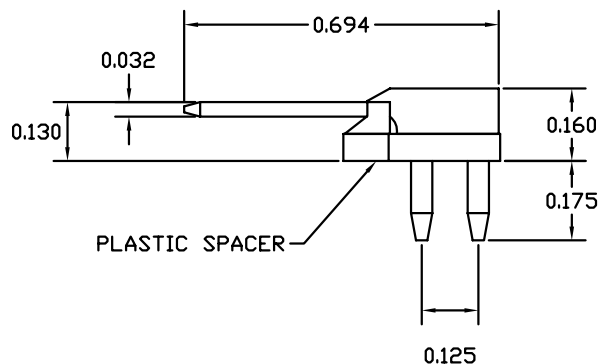
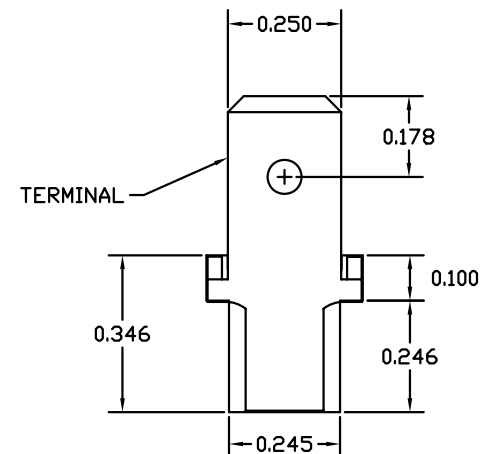
(.0465 DRILL RECOMMENDED)



FOR USE WITH NEMA STANDARD 1/4" POWER RECEPTACLE

CURRENT RATING: 10 AMPS @10° C TEMPERATURE RISE.

3. THE HOUSING WILL WITHSTAND EXPOSURE TO 255°C
BOARD PEAK TEMPERATURE FOR 40 SECONDS IN A
CONVECTION, INFRA-RED OR VAPOR PHASE OVEN.

- ④. ADD AN "LF" SUFFIX TO PART NUMBER FOR PRODUCT
THAT MEETS EUROPEAN UNION DIRECTIVES AND OTHER
COUNTRY REGULATIONS AS DESCRIBED IN GS-22-008.



mat'l. code SEE NOTE 1				surface <input checked="" type="checkbox"/> tolerance		projection 		product family FASTECH			
ltr ecn no dr date				tolerances unless otherwise specified				title			
A V91019 LSS 1999-04-28				angles		linear .XXX ±.003		INCH		221-F POWER TERMINAL	
B V20114 CGD 2002-01-18								scale 1:1			
C V06-0365 HTB 2006-06-06											
D V06-1031 HTB 2006-10-23				dr R. CONRAD 1999-04-28				dwg no		sheet 1 of 1 size	
E V06-1196 HTB 2007-01-19				engr R. CONRAD 1999-04-28				A88KC4040		A	
				chr R. CONRAD 1999-04-28							
				appd R. CONRAD 1999-04-28				type		Product Customer Drawing	
sheet index		revision sheet		E 1							