

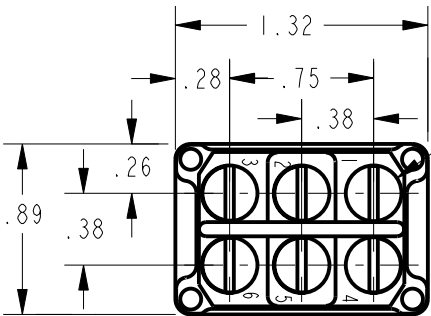
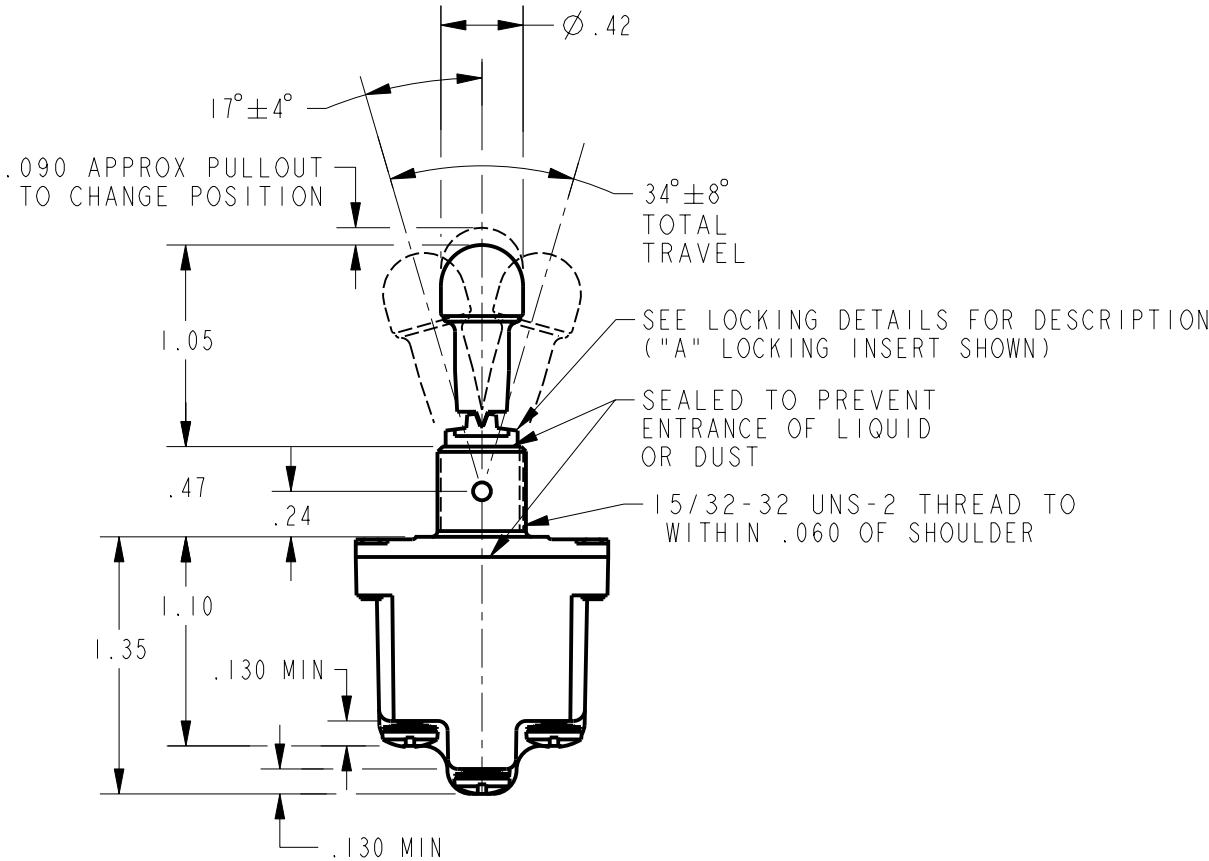
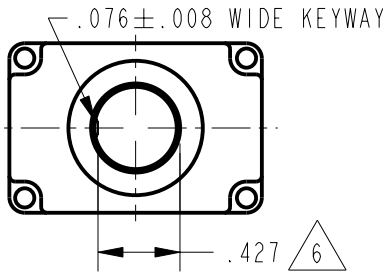
MICRO SWITCH
a Honeywell Division
FED. MFG. CODE 91929

SWITCH - TOGGLE

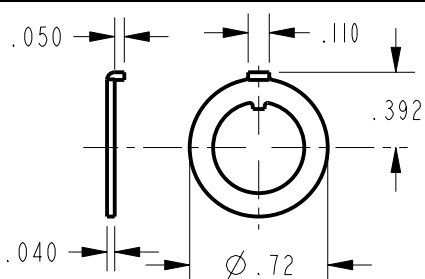
2NT1 SERIES CHART 2

CATALOG LISTING

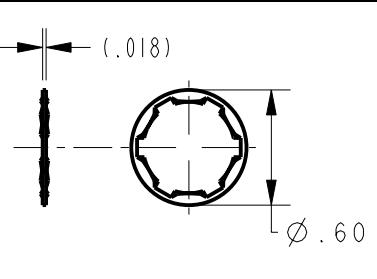
THIS DRAWING COVERS A PROPRIETARY ITEM AND IS THE PROPERTY OF MICRO SWITCH, A DIVISION OF HONEYWELL. THIS DRAWING IS NOT TO BE COPIED OR USED WITHOUT THE APPROVAL OF MICRO SWITCH



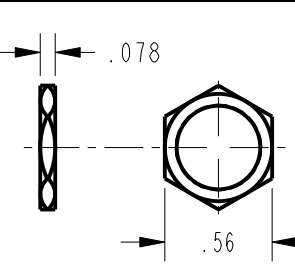
6X 6-32 UNC-2 X (.260) BINDING HEAD TERMINAL SCREW AND LOCK-WASHER (SEMS) ONE PER TERMINAL



LOCKING RING



LOCKWASHER



2X HEX NUT

THIRD ANGLE PROJECTION	
SCALE	FULL
DO NOT SCALE PRINT	
UNLESS OTHERWISE SPECIFIED TOLERANCES ARE	
ONE PLACE	(.0) ±.030
TWO PLACE	(.00) ±.015
THREE PLACE	(.000) ±.005
ANGLES	±
WEIGHT	.15 LBS APPROX

ELECTRICAL DATA

L191 15A 125, 250, 277 VAC
1/2HP 125 VAC
1HP 250, 277 VAC
5A 125 VAC "L"



L192 10A 125, 250, 277 VAC
1/4HP 125 VAC
1/2HP 250, 277 VAC
3A 125 VAC "L"



AVAILABLE
LOCKING
COMBINATIONS
FOR CONFIGURATION
SEE LETTERED
DETAILS

4
CATALOG
LISTING

5
CIRCUIT MADE WITH
TOGGLE LEVER IN
KEYWAY
SIDE
(1-2,4-5)
CENTER
(1-2,4-5)
OPPOSITE
KEYWAY
(2-3,5-6)

"A"
LOCKED IN
THREE
POSITIONS

"B"
LOCKED IN
CENTER AND
EXTREME POS.
(KEYWAY SIDE)

"D"
LOCKED OUT
OF CENTER
POSITION

"E"
LOCKED IN
CENTER
POSITION

"F"
LOCKED IN
EXTREME POS.
(OPP. KEYWAY)

"G"
LOCKED IN
EXTREME POS.
(KEYWAY SIDE)

"H"
LOCKED OUT OF
CENTER AND
EXTREME POS.
(KEYWAY SIDE)

"J"
LOCKED OUT OF
CENTER AND
EXTREME POS.
(OPP. KEYWAY)

"K"
LOCKED IN
CENTER AND
EXTREME POS.
(OPP. KEYWAY)

"L"
LOCKED OUT OF
EXTREME POS.
(KEYWAY SIDE)

"M"
LOCKED OUT OF
AND INTO
EXTREME POS.
(OPP. KEYWAY)

"N"
LOCKED OUT OF
EXTREME POS.
(OPP. KEYWAY)

"P"
LOCKED OUT OF
AND INTO
EXTREME POS.
(KEYWAY SIDE)

- NOTES
- 1 - SWITCHES ARE CAPABLE OF WITHSTANDING A TEMPERATURE OF 160° F CONTINUOUSLY AT FULL RATED LOAD
 - 2 - MICRO SWITCH CATALOG LISTING MARKED ON SIDE OF SWITCH
 - 3 - FURNISHED UNASSEMBLED
 - 4 - SUFFIX LETTER MUST BE ADDED FOR DESIRED TYPE OF TOGGLE LOCKING. SEE CHART FOR AVAILABLE LOCKING COMBINATIONS
 - 5 - APPLIES ONLY TO "ON" AND "MOMENTARY ON" POSITIONS
 - 6 - FROM BOTTOM OF KEYWAY TO MAJOR DIA OF 15/32 THREAD