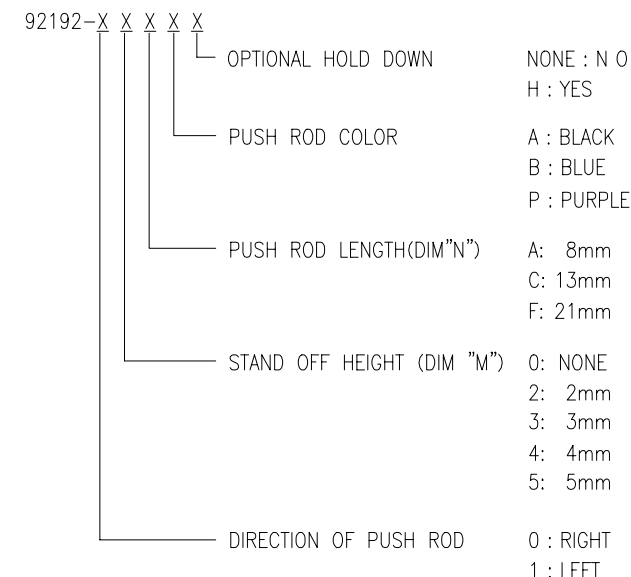


PRODUCT NO.
92192

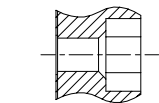
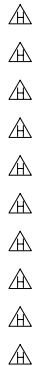
REVISIONS				
REV	DESCRIPTION	ECN	BY	DATE
A	RELEASED	J30053	M.K	1/20/'93
B	REVISED	A40163	M.K	5/28/'94
C	REVISED	V40646	M.K	6/24/'94
D	REVISED	V40840	M.K	7/5/'94
E	REVISED	A40198	M.K	7/19/'94
F	REVISED	V52113	M.K	12/22/'94
G	REVISED	A40349	M.K	1/9/'95
H	REVISED (ADDED -05CAH -13CA -13CAH)	J70134	K.S	5/22/'97
J	REVISED (ADDED -12FA)	N90076	M.K	7/22/'99
M	REVISED (ADDED "LF")	N05-0026	M.Z	11/09/'05
N	REVISED (ADD -12CAH)	N07-0026	D.T	1/29/'07

PRODUCT NO. 92192-XXXXX	STAND OFF(mm)	DIM "N" (mm)	PUSH ROD COLOR	HOLD DOWN	SHEET NO.
00AA	0	8	BLACK	NONE	NO.2
00AAH	0	8	BLACK	YES	
00CA	0	13	BLACK	NONE	
00CAH	0	13	BLACK	YES	
00CB	0	13	BLUE	NONE	
00CBH	0	13	BLUE	YES	
00CP	0	13	PURPLE	NONE	
00CPH	0	13	PURPLE	YES	
00FA	0	21	BLACK	NONE	
00FAH	0	21	BLACK	YES	NO.3
02CA	2	13	BLACK	NONE	
02CB	2	13	BLUE	NONE	
04CA	4	13	BLACK	NONE	
05CA	5	13	BLACK	NONE	
05CAH	5	13	BLACK	YES	NO.4
10AA	0	8	BLACK	NONE	
10AAH	0	8	BLACK	YES	
10CA	0	13	BLACK	NONE	
10CAH	0	13	BLACK	YES	
10CB	0	13	BLUE	NONE	
10CBH	0	13	BLUE	YES	
10CP	0	13	PURPLE	NONE	
10CPH	0	13	PURPLE	YES	
10FA	0	21	BLACK	NONE	NO.5
10FAH	0	21	BLACK	YES	
12CA	2	13	BLACK	NONE	
12CAH	2	13	BLACK	YES	
12CB	2	13	BLUE	NONE	
12FA	2	21	BLACK	NONE	
13CA	3	13	BLACK	NONE	
13CAH	3	13	BLACK	YES	
14CA	4	13	BLACK	NONE	
15CA	5	13	BLACK	NONE	

	PRODUCT NO. 92192-XXXXX	STAND OFF (mm)	DIM "N" (mm)	PUSH ROD COLOR	HOLD DOWN	SHEET NO
△	00AALF	0	8	BLACK	NONE	NO.2
△	00AAHLF	0	8	BLACK	YES	
△	00CALF	0	13	BLACK	NONE	
△	00CAHLF	0	13	BLACK	YES	
△	00CBLF	0	13	BLUE	NONE	
△	00CBHLF	0	13	BLUE	YES	
△	00CPLF	0	13	PURPLE	NONE	
△	00CPHLF	0	13	PURPLE	YES	
△	00FALF	0	21	BLACK	NONE	
△	00FAHLF	0	21	BLACK	YES	
△	02CALF	2	13	BLACK	NONE	NO.3
△	02CBLF	2	13	BLUE	NONE	
△	04CALF	4	13	BLACK	NONE	
△	05CALF	5	13	BLACK	NONE	
△	05CAHLF	5	13	BLACK	YES	
△	10AALF	0	8	BLACK	NONE	NO.4
△	10AAHLF	0	8	BLACK	YES	
△	10CALF	0	13	BLACK	NONE	
△	10CAHLF	0	13	BLACK	YES	
△	10CBLF	0	13	BLUE	NONE	
△	10CBHLF	0	13	BLUE	YES	
△	10CPLF	0	13	PURPLE	NONE	
△	10CPHLF	0	13	PURPLE	YES	
△	10FALF	0	21	BLACK	NONE	
△	10FAHLF	0	21	BLACK	YES	
△	12CALF	2	13	BLACK	NONE	NO.5
△	12CAHLF	2	13	BLACK	YES	
△	12CBLF	2	13	BLUE	NONE	
△	12FALF	2	21	BLACK	NONE	
△	13CALF	3	13	BLACK	NONE	
△	13CAHLF	3	13	BLACK	YES	
△	14CALF	4	13	BLACK	NONE	
△	15CALF	5	13	BLACK	NONE	

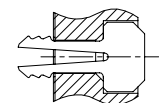
[illegible]

PRODUCT NO.
92192-00AA/00AALF
92192-00AAH/00AAHLF
92192-00CA/00CALF
92192-00CAH/00CAHLF
92192-00CB/00CBLF
92192-00CBH/00CBHLF
92192-00CP/00CPLF
92192-00CPH/00CPHLF
92192-00FA/00FALF
92192-00FAH/00FAHLF



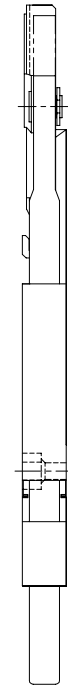
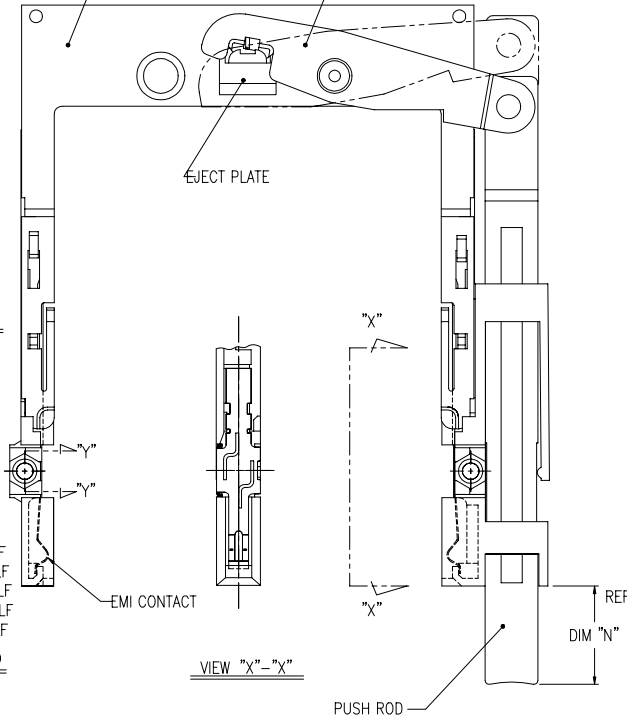
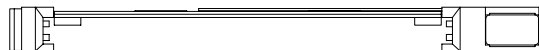
92192-00AA/00AALF  
-00CA/00CALF  
-00CB/00CBLF  
-00CP/00CPLF  
-00FA/00FALF

SECTION "Y"- "Y"(4/1)  
NON HOLD-DOWN  
TYP(2)



92192-00AAH/00AAHLF  
-00CAH/00CAHLF  
-00CBH/00CBHLF  
-00CPH/00CPHLF  
-00FAH/00FAHLF

SECTION "Y"- "Y"(4/1)  
OPTIONAL HOLD-DOWN  
TYP(2)



#### NOTE

- EJECT PLATE MOVE ALONG INSIDE WALL OF COVER PLATE SMOOTHLY AFTER ASSEMBLING WITH HDR ASSY.
- MATERIAL
  - GUIDE : POLYPHTHARAMID UL94V-0 BLACK
  - PUSH ROD : FLAME RETARDANT UL94V-0 BLACK/BLUE
  - PLATE : STAINLESS
  - EMI CONTACT : PHOSPHOR BRONZE
  - HOLD-DOWN : BRASS
- FINISH
  - EMI CONTACT UNDER PLATING : 2.0 $\mu$ m MIN. Ni
  - CONTACT AREA : 0.5 $\mu$ m MIN. Au

- RECOMMENDED PCB HOLE (OPTIONAL HOLD-DOWN) : 2.3 $\pm$ 0.1

REVISIONS				
REV	DESCRIPTION	ECN	BY	DATE
A	RELEASED	J30053	N.T	2/17/'93
B	REVISED	J40163	M.K	5/26/'94
C	REVISED	V40646	M.K	6/24/'94
D	REVISED	V40840	M.K	7/ 5/'94
E	REVISED	J40198	M.K	7/19/'94
F	REVISED	V32113	M.K	12/21/'94
G	REVISED	J40349	M.K	1/9/'94
H	REVISED	N05-0260	M.Z	11/09/05
N				

SHEET INDEX	ISSUE	SH NO.	TOLERANCES UNLESS OTHERWISE SPECIFIED	MAT	SEE NOTE ②	DR	J. Omata	DATE	12/21/'94	CUSTOMER COPY	TITLE	68P EJECTOR HEADER TYPE 1 / I / II MECHANISM ASSY	SCALE	SIZE	DWG. NO.	92192	REV	SHEET
LINEAR				FINISH	SEE NOTE ③	CHK	M. Kajiura			THIRD ANGLE PROJ			2/1	C			N	2 of
ANGLES				APPD		UNIT	MM											

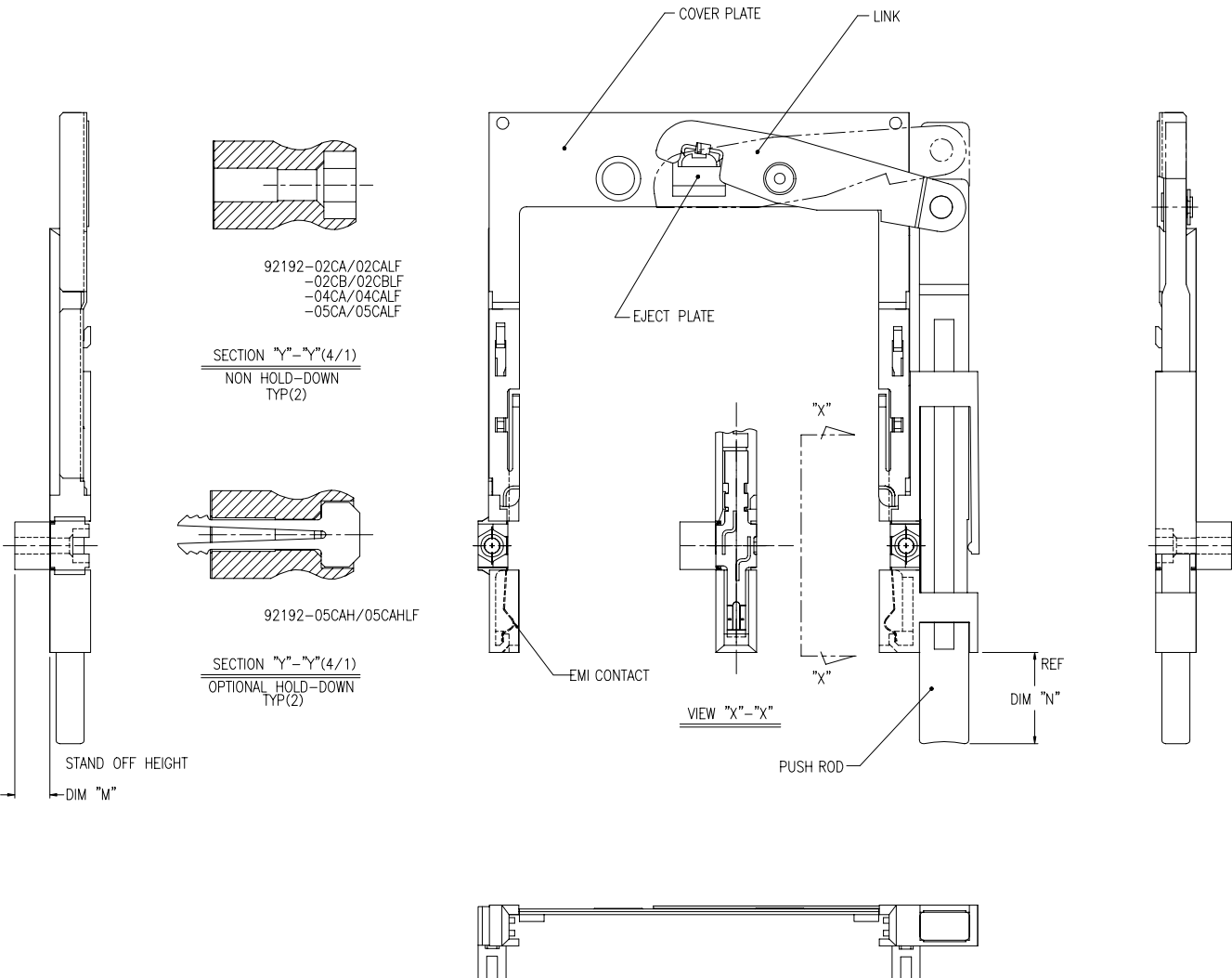
PDM: Rev:N

STATUS: Released

Printed: Oct 12, 2010

PRODUCT NO.
92192-02CA/02CALF
92192-02CB/02CBLF
92192-04CA/04CALF
92192-05CA/05CALF
92192-05CAH/05CAHLF

REVISIONS				
REV	DESCRIPTION	ECN	BY	DATE
A	RELEASED	J30053	N.T.	2/17/'93
B	REVISED	J40163	M.K.	5/26/'94
C	REVISED	V40840	M.K.	7/ 5/'94
D	REVISED	J40198	M.K.	7/19/'94
E	REVISED	V32113	M.K.	12/20/'94
F	REVISED	J40349	M.K.	1/9/'95
G	REVISED (ADDED--05CAH)	J70134	K.S.	8/8/'97
H	REVISED (ADDED "LF")	N05-0260	MZ	11/09/'05
N				



### NOTE

1. EJECT PLATE MOVE ALONG INSIDE WALL OF COVER PLATE SMOOTHLY AFTER ASSEMBLING WITH HDR ASSY.

- ② MATERIAL  
GUIDE : POLYPHTHARAMID UL94V-0 BLACK  
PUSH ROD : FLAME RETARDANT UL94V-0 BLACK  
PLATE : STAINLESS  
EMI CONTACT : PHOSPHOR BRONZE  
STAND OFF : ZINC ALLOYS DIE CASTING
- ③ FINISH  
EMI CONTACT  
UNDER PLATING : 2.0 $\mu$ m MIN. Ni  
CONTACT AREA : 0.5 $\mu$ m MIN. Au  
STAND OFF : 3~5 $\mu$ m Ni OVER 5~10 $\mu$ m Cu.

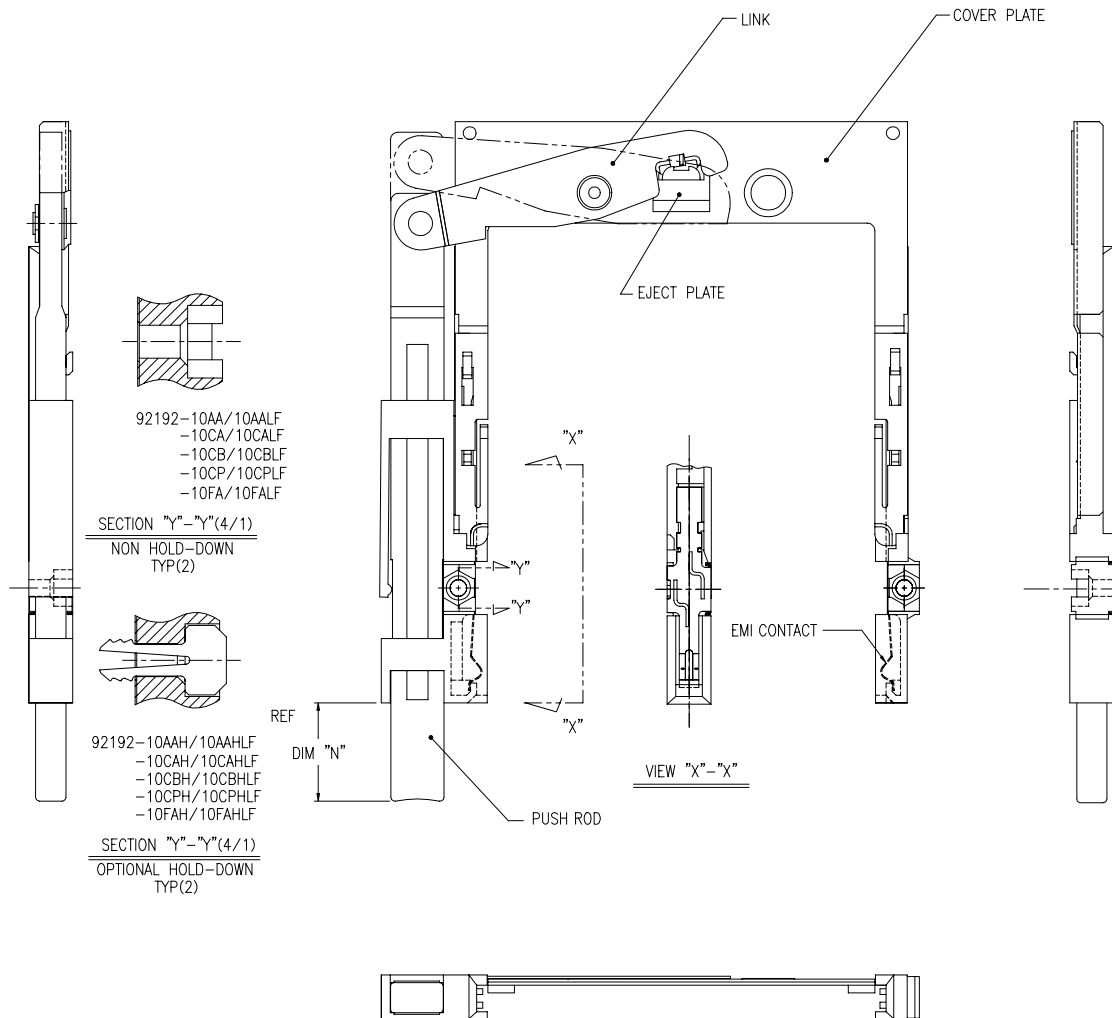
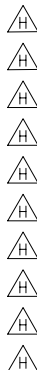
[illegible]

**PDM: Rev:N**

STATUS: Released

Printed: Oct 12, 2010

PRODUCT NO.
92192-10AA/10AALF
92192-10AAH/10AAHLF
92192-10CA/10CALF
92192-10CAH/10CAHLF
92192-10CB/10CBLF
92192-10CBH/10CBHLF
92192-10CP/10CPLF
92192-10CPH/10CPHLF
92192-10FA/10FALF
92192-10FAH/10FAHLF



REVISIONS				
REV	DESCRIPTION	ECN	BY	DATE
A	RELEASED	J30053	N.T	2/17/93
B	REVISED	J40163	M.N	5/26/94
C	REVISED	V40646	M.K	6/24/94
D	REVISED	V40840	M.K	7/ 5/94
E	REVISED	J40198	M.K	7/19/94
F	REVISED	V32113	M.K	12/21/94
G	REVISED	J40349	M.K	1/9/95
H	REVISED	N05-0260	M.Z	11/09/05
N				

#### NOTE

1. EJECT PLATE MOVE ALONG INSIDE WALL OF COVER PLATE SMOOTHLY AFTER ASSEMBLING WITH HDR ASSY.

#### ② MATERIAL

GUIDE : POLYPHTHARAMID UL94V-0 BLACK  
 PUSH ROD : FLAME RETARDANT UL94V-0 BLACK/BLUE  
 PLATE : STAINLESS  
 EMI CONTACT : PHOSPHOR BRONZE  
 HOLD-DOWN : BRASS

#### ③ FINISH

EMI CONTACT  
 UNDER PLATING : 2.0 $\mu$ m MIN. Ni  
 CONTACT AREA : 0.5 $\mu$ m MIN. Au

4. RECOMMENDED PCB HOLE (OPTIONAL HOLD-DOWN) : 2.3 $\pm$ 0.1

SHEET INDEX	ISSUE	SH NO.	TOLERANCES UNLESS OTHERWISE SPECIFIED	MAT	DR	ENGR	CHK	APPD	DATE	CUSTOMER COPY	THIRD ANGLE PROJ	UNIT	SCALE	SIZE	DWG. NO.	REV	SHEET
				SEE NOTE ②	J. Omaki	M. Kojima			12/21/94			MM	2/1	C	92192	N	4 of 4
LINEAR				FINISH													
ANGLES				SEE NOTE ③													



TITLE 68P EJECTOR HEADER TYPE 1 / I / III  
 MECHANISM ASSY

PDM: Rev:N

STATUS Released

Printed: Oct 12, 2010

NOTE

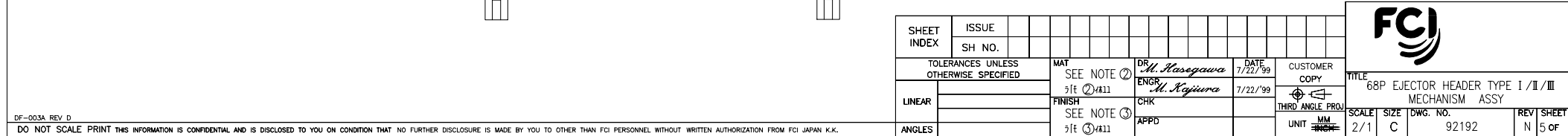
1. EJECT PLATE MOVE ALONG INSIDE WALL OF COVER PLATE SMOOTHLY AFTER ASSEMBLING WITH HDR ASSY.

② MATERIAL

GUIDE	: POLYPHTHRAMID UL94V-0 BLACK
PUSH ROD	: FLAME RETARDANT UL94V-0 BLACK
PLATE	: STAINLESS
EMI CONTACT	: PHOSPHOR BRONZE
STAND OFF	: ZINC ALLOYS DIE CASTING

③ FINISH

EMI CONTACT	
UNDER PLATING	: 2.0 $\mu$ m MIN. Ni
CONTACT AREA	: 0.5 $\mu$ m MIN. Au
STAND OFF	: 3~5 $\mu$ m Ni OVER 5~10 $\mu$ m Cu.



# Mouser Electronics

Authorized Distributor

Click to View Pricing, Inventory, Delivery & Lifecycle Information:

FCI:

[92192-15CA](#) [92192-02CALF](#)