

Part Number	Package	Material	Color	Dominant λ D	Lens Color	I_V at I_F =mA/Typ	Viewing Angle (Degrees)	V_F (Typ)	RoHS
OPA731R	20W Light Flood	AlInGaP	Red	625 nm	Clear	1,400/520 lm	120°	12.5	✓
OPA731RD	20W Light Flood	AlInGaP	Red	625 nm	Clear	1,400/520 lm	40°	12.5	✓

OPA731 Series

20 Watt Light Flood on Another Linear Heat Spreader

OPA731 Series

- 20, 1 watt LEDs per square substrate
- Mono-color per strip (Blue, Green, Red, Yellow, White)
- Two component beam angle options (120° or 40°)
- Universal connector (Tyco 2-292173-2 mates with 173977-2)
- RoHS Compliant

OPA731_ (120° Beam Angle)

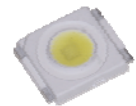
OPA731_D (40° Beam Angle)

The **OPA731** Series are designed for areas where lighting intensity and reliability are essential. The light beam angles of 40° and 120° are ideal for illuminating small and medium size areas while requiring minimal space. A patented substrate is used to ensure the best heat dissipation of any light assembly in the industry.

For custom colors and design contact your OPTEK representative.

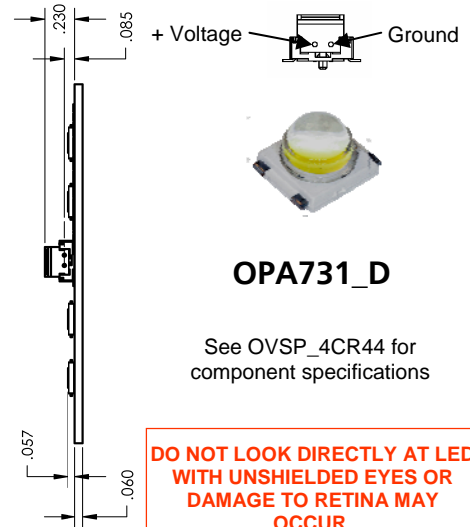
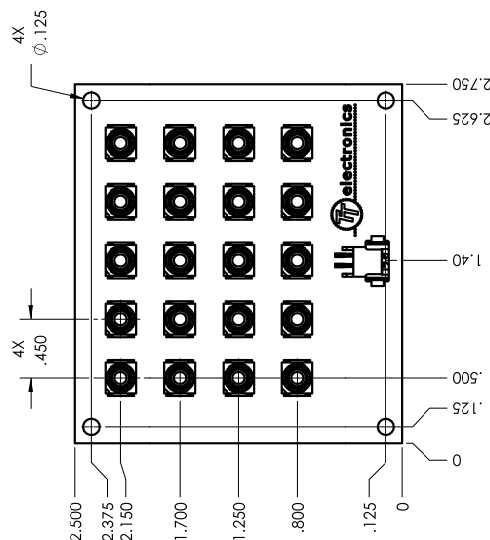
Electrical / Optical Characteristics: $T_A=25^{\circ}\text{C}$, $I_F=1.4\text{A}$

Part Number	Typical Forward Voltage (V)	Luminous Flux (lm)	Beam Angle	Color	Dominant Wavelength
OPA731Y	12.5	700	120°	Yellow	587 nm
OPA731B	18.0	180		Blue	470 nm
OPA731G	18.0	960		Green	530 nm
OPA731R	12.5	520		Red	625 nm
OPA731W	18.0	960		White	6,500°K
OPA731YD	12.5	700	40°	Yellow	587 nm
OPA731BD	18.0	180		Blue	470 nm
OPA731GD	18.0	960		Green	530 nm
OPA731RD	12.5	520		Red	625 nm
OPA731WD	18.0	960		White	6,500°K



OPA731_

See OVSP_BCR4 for component specifications



OPA731_D

See OVSP_4CR44 for component specifications

**DO NOT LOOK DIRECTLY AT LED
WITH UNSHIELDED EYES OR
DAMAGE TO RETINA MAY
OCCUR.**



OPTEK reserves the right to make changes at any time in order to improve design and to supply the best product possible.