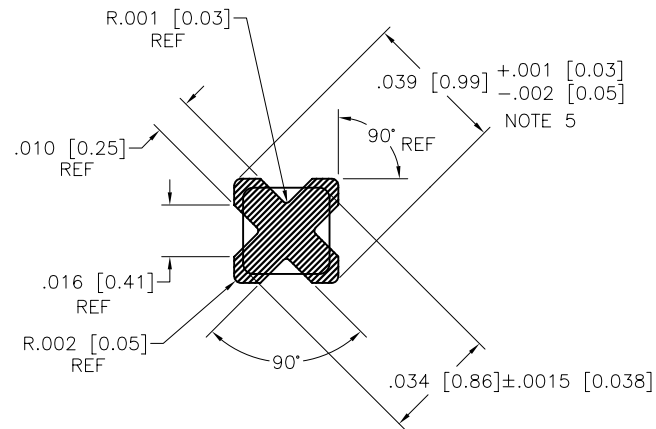
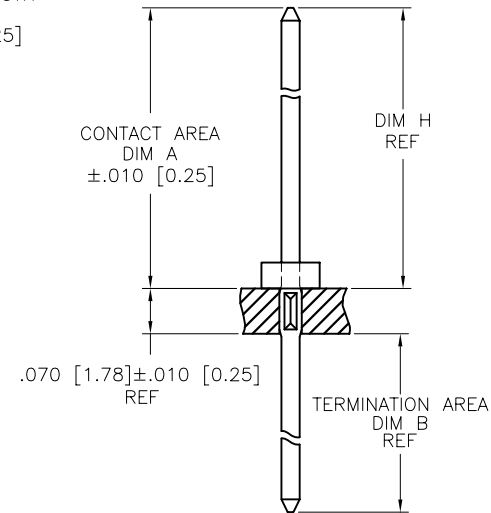
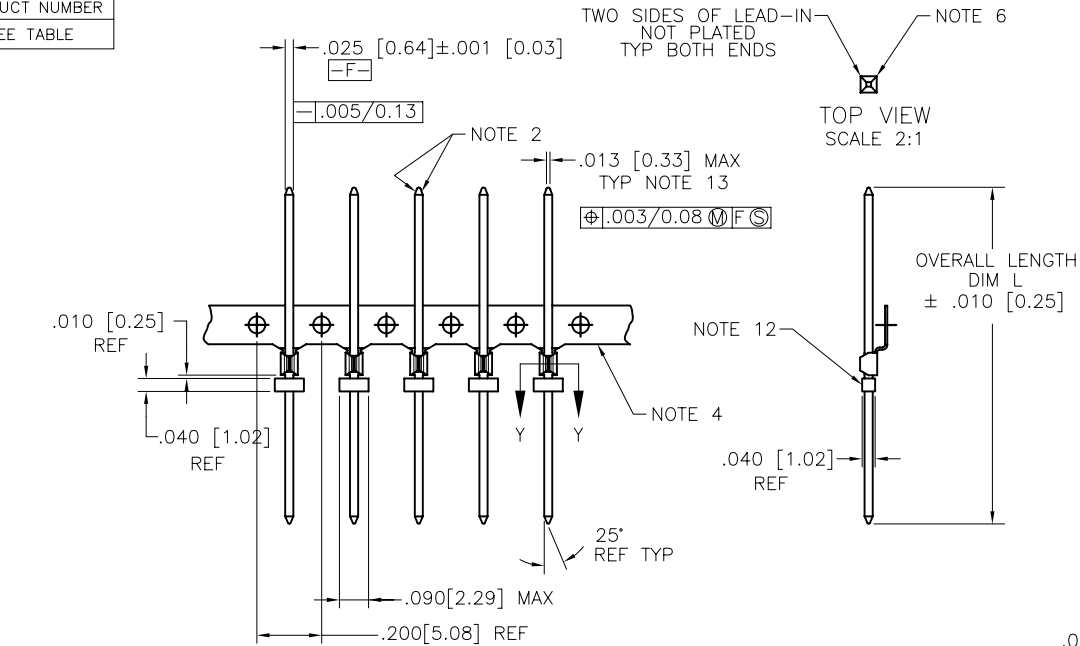


PRODUCT NUMBER
SEE TABLE



| mat'l. code SEE NOTE 1 | | | | surface ASME Y14.5 | tolerance ASME Y14.5 | projection | product family PIN PRODUCTS | | |
|---------------------------|----------------|-----|------------|---------------------------------------|---------------------------------|------------|---|--|--|
| ltr | ec'n no | dr | date | tolerances unless otherwise specified | angles | INCH/MM | title | | |
| W | V08-0353 | HTB | 2008-08-18 | | $XX \pm .01 / X \pm .3$ | scale 1:1 | BERGPIN® .200"[5.08]cc .039"[0.99] DIA. STAR WITH SOLDER WASHER | | |
| - | - | - | - | | $XXX \pm .005 / XXX \pm .13$ | | | | |
| R | V71499 | HTB | 1997-10-31 | $0^\circ \pm 5^\circ$ | $XXXX \pm .0020 / XXX \pm .051$ | FCI | dwg no 76241 sheet 1 of 4 size A4 | | |
| S | V90053 | SAR | 1999-01-22 | dr | E. KROPIEWNICKI | 1996-07-24 | | | |
| T | V91365 | HTB | 1999-06-09 | engr | L. FYE | 1996-07-24 | | | |
| U | V01594 | JRW | 2000-07-12 | chr | T. BREWBAKER | 1996-07-24 | | | |
| V | V06-0682 | JRV | 2006-07-18 | appd | L. FYE | 1996-07-24 | | | |
| sheet index | revision sheet | W | W | W | W | | type CUSTOMER Drawing | | |
| | | 1 | 2 | 3 | 4 | | | | |

| PRODUCT NUMBER | PLATING | UNDERPLATING |
|----------------|-------------------------|-----------------|
| 76241-1YY | 30μ" [0.76μ] Au | 50μ" [1.27μ] Ni |
| 76241-2YY | U N A S S I G N E D | |
| 76241-3YY | 50μ" [1.27μ] Au | 50μ" [1.27μ] Ni |
| 76241-4YY | 120μ" [3.05μ] 93/7 SnPb | 50μ" [1.27μ] Ni |
| 76241-5YY | 30μ" [0.76μ] GXT™ | 50μ" [1.27μ] Ni |
| 76241-6YY | 15μ" [0.38μ] GXT™ | 50μ" [1.27μ] Ni |
| 76241-7YY | U N A S S I G N E D | |
| 76241-8YY | U N A S S I G N E D | |
| 76241-9YY | 15μ" [0.38μ] Au | 50μ" [1.27μ] Ni |

NOTES:

- ①. PIN MATERIAL: PHOS BRONZE 3/4 HARD
ASTM-B-159-66
SOLDER WASHER MATERIAL:
STANDARD: TIN-LEAD ALLOY 60/40
OPTIONAL: FOR TIN-LEAD ALLOY 60/40 SOLDER
WASHERS WITH ROSIN FLUX THAT DOES
NOT REQUIRE CLEANING, ADD AN "A"
TO THE END OF THE PART NUMBER.
- ②. BURNISH MARKS ON PIN PERMITTED, BURR
.003/.08 MAX TYP BULGE .0005/.013 MAX TYP.
3. SEE PRODUCT SPECIFICATION BUS-12-064 FOR
P.C. BOARD HOLE DIAMETER AND P.C. BOARD
HOLE PLATING INFORMATION.
- ④. FOR MANUFACTURING PURPOSES ONLY.
- ⑤. THE .039+.001,-.002 [0.99+.03,-.05] FEATURE
SHALL BE CONCENTRIC TO THE WIRE DIAGONAL
WITHIN .004 [0.10] TIR.
- ⑥. .003 [0.08] R MAX TYP 4X ON WIRE WRAP
PORTION OF PIN.
7. FOR DIMENSIONS NOT GIVEN, SEE TABULATION.
8. CENTER LINE OF TERMINAL MUST BE IN A
TRUE POSITION WITHIN .015 [0.38] DIA. WITH
RESPECT TO THE HOLE AXIS AFTER INSERTION
IN P.C. BOARD.

9. FOR MACHINE APPLICATION, THE STANDARD BERGPIN
MACHINES MUST BE MODIFIED.
10. SOLDER MATERIAL VOLUME :
.0000234 CU IN [0.001203 CU CM].
11. USE FIRST TWO DIGITS OF "H" DIMENSIONS
FOR DASH NUMBER OF PUNCH FROM MACHINE
EPL:
EXAMPLE:
P/N 76241-001 PUNCH P/N FROM EPL
BP191-XXXXXX-023
DIM "H" FOR .062/1.57 BP151-XXXXXX-023
THICK BOARD = .235 [5.97] BP171-XXXXXX-023
12. SOLDER WASHER SHALL HAVE 75 GM MIN RETENTION.
13. .016 [0.41] MAX IF "B" IS LESS THAN .230 [5.84].
14. ALL ANGLES ± 5° UNLESS OTHERWISE SPECIFIED.

| | | | | | | | | | |
|-------------|--------|----------------|----------------|---------------------------------------|---------------------|------------|--|------------------------|--|
| mat'l. code | | surface | | tolerance | | projection | | product family | |
| SEE NOTE 1 | | ASME Y14.5 | | ASME Y14.5 | | | | PIN PRODUCTS | |
| ltr | ecr no | dr | date | tolerances unless otherwise specified | | | | title | |
| w | | | | angles | XX*.01/X*.3 | | | BERGPIN® .200"[5.08]cc | |
| | | | | | XXX*.005/XX*.13 | | | .039"[0.99] DIA. STAR | |
| | | | | 0°±5° | XXXX*.0020/XXX*.051 | scale 1:1 | | WITH SOLDER WASHER | |
| | | dr | E. KROPIEWICKI | 1996-07-24 | | | | dwg no | |
| | | enr | L. FYE | 1996-07-24 | | | | sheet 2 of 4 | |
| | | chr | T. BREWBAKER | 1996-07-24 | | | | size | |
| | | appd | L. FYE | 1996-07-24 | | | | A4 | |
| sheet index | | revision sheet | | | | | | type CUSTOMER Drawing | |



| PRODUCT NUMBER | CONTACT AREA | | TERM. AREA | | DIM H FOR | | DIM H FOR | | DIM H FOR | | OVERALL LENGTH | |
|----------------|--------------|--------|------------|--------|-----------------|--------|-----------------|--------|-----------------|--------|----------------|--------|
| | DIM A | DIM A | DIM B | DIM B | .062/1.58 BOARD | | .093/2.36 BOARD | | .125/3.18 BOARD | | DIM L | DIM L |
| | ENGLISH | METRIC | ENGLISH | METRIC | ENGLISH | METRIC | ENGLISH | METRIC | ENGLISH | METRIC | ENGLISH | METRIC |
| 76241-X01 | 0.230 | 5.84 | 0.060 | 1.52 | 0.235 | 5.97 | 0.220 | 5.59 | 0.205 | 5.21 | 0.365 | 9.27 |
| 76241-X02 | 0.265 | 6.73 | 0.060 | 1.52 | 0.270 | 6.86 | 0.255 | 6.48 | 0.240 | 6.10 | 0.400 | 10.16 |
| 76241-X03 | 0.345 | 8.76 | 0.060 | 1.52 | 0.350 | 8.89 | 0.335 | 8.51 | 0.320 | 8.13 | 0.480 | 12.19 |
| 76241-X04 | 0.400 | 10.16 | 0.060 | 1.52 | 0.405 | 10.29 | 0.390 | 9.91 | 0.375 | 9.53 | 0.535 | 13.59 |
| 76241-X05 | 0.415 | 10.54 | 0.060 | 1.52 | 0.420 | 10.67 | 0.405 | 10.29 | 0.390 | 9.91 | 0.550 | 13.97 |
| 76241-X06 | 0.435 | 11.05 | 0.060 | 1.52 | 0.440 | 11.18 | 0.425 | 10.80 | 0.410 | 10.41 | 0.570 | 14.48 |
| 76241-X07 | 0.465 | 11.81 | 0.060 | 1.52 | 0.470 | 11.94 | 0.455 | 11.56 | 0.440 | 11.18 | 0.600 | 15.24 |
| 76241-X08 | 0.515 | 13.08 | 0.060 | 1.52 | 0.520 | 13.21 | 0.505 | 12.83 | 0.490 | 12.45 | 0.650 | 16.51 |
| 76241-X09 | 0.570 | 14.48 | 0.060 | 1.52 | 0.575 | 14.61 | 0.560 | 14.22 | 0.545 | 13.84 | 0.705 | 17.91 |
| 76241-X10 | 0.585 | 14.86 | 0.060 | 1.52 | 0.590 | 14.99 | 0.575 | 14.61 | 0.560 | 14.22 | 0.720 | 18.29 |
| 76241-X11 | 0.635 | 16.13 | 0.060 | 1.52 | 0.640 | 16.26 | 0.625 | 15.88 | 0.610 | 15.49 | 0.770 | 19.56 |
| 76241-X12 | 0.655 | 16.64 | 0.060 | 1.52 | 0.660 | 16.76 | 0.645 | 16.38 | 0.630 | 16.00 | 0.790 | 20.07 |
| 76241-X13 | 0.745 | 18.92 | 0.060 | 1.52 | 0.750 | 19.05 | 0.735 | 18.67 | 0.720 | 18.29 | 0.880 | 22.35 |
| 76241-X14 | 0.265 | 6.73 | 0.245 | 6.22 | 0.270 | 6.86 | 0.255 | 6.48 | 0.240 | 6.10 | 0.580 | 14.73 |
| 76241-X15 | 0.345 | 8.76 | 0.245 | 6.22 | 0.350 | 8.89 | 0.335 | 8.51 | 0.320 | 8.13 | 0.660 | 16.76 |
| 76241-X16 | 0.400 | 10.16 | 0.245 | 6.22 | 0.405 | 10.29 | 0.390 | 9.91 | 0.375 | 9.53 | 0.715 | 18.16 |
| 76241-X17 | 0.465 | 11.81 | 0.245 | 6.22 | 0.470 | 11.94 | 0.455 | 11.56 | 0.440 | 11.18 | 0.780 | 19.81 |
| 76241-X18 | 0.570 | 14.48 | 0.245 | 6.22 | 0.575 | 14.61 | 0.560 | 14.22 | 0.545 | 13.84 | 0.885 | 22.48 |
| 76241-X19 | 0.625 | 15.88 | 0.245 | 6.22 | 0.630 | 16.00 | 0.615 | 15.62 | 0.600 | 15.24 | 0.940 | 23.88 |
| 76241-X20 | 0.655 | 16.64 | 0.245 | 6.22 | 0.660 | 16.76 | 0.645 | 16.38 | 0.630 | 16.00 | 0.970 | 24.64 |
| 76241-X21 | 0.265 | 6.73 | 0.345 | 8.76 | 0.270 | 6.86 | 0.255 | 6.48 | 0.240 | 6.10 | 0.690 | 17.53 |
| 76241-X22 | 0.345 | 8.76 | 0.355 | 9.02 | 0.350 | 8.89 | 0.335 | 8.51 | 0.320 | 8.13 | 0.770 | 19.56 |
| 76241-X23 | 0.400 | 10.16 | 0.355 | 9.02 | 0.405 | 10.29 | 0.390 | 9.91 | 0.375 | 9.53 | 0.825 | 20.96 |
| 76241-X24 | 0.465 | 11.81 | 0.355 | 9.02 | 0.470 | 11.94 | 0.455 | 11.56 | 0.440 | 11.18 | 0.890 | 22.61 |
| 76241-X25 | 0.570 | 14.48 | 0.355 | 9.02 | 0.575 | 14.61 | 0.560 | 14.22 | 0.545 | 13.84 | 0.995 | 25.27 |
| 76241-X26 | 0.625 | 15.88 | 0.355 | 9.02 | 0.630 | 16.00 | 0.615 | 15.62 | 0.600 | 15.24 | 1.050 | 26.67 |
| 76241-X27 | 0.655 | 16.64 | 0.355 | 9.02 | 0.660 | 16.76 | 0.645 | 16.38 | 0.630 | 16.00 | 1.080 | 27.43 |
| 76241-X28 | 0.305 | 7.75 | 0.060 | 1.52 | 0.310 | 7.87 | 0.295 | 7.49 | 0.280 | 7.11 | 0.440 | 11.18 |

| | | | | | | | | | | | |
|---------------------------|----------|----|------|---|-----------------|-------------------------|--|----------------|--------|---------------------------------|------------------|
| mat'l. code SEE NOTE 1 | | | | surface ASME Y14.5 <input checked="" type="checkbox"/> | | tolerance ASME Y14.5 | | projection | | product family PIN PRODUCTS | |
| ltr | ecr no | dr | date | tolerances unless otherwise specified | | XX*01/X*3 | | | | title BERGPIN® .200"[5.08]cc | |
| w | | | | angles | | XXX*005/XXX*13 | | INCH/MM | | .039"[0.99] DIA. STAR | |
| | | | | 0"±.5" | | XXXX*0020/XXX*051 | | scale 1:1 | | WITH SOLDER WASHER | |
| | | | | dr | E. KROPIEWNICKI | 1996-07-24 | | | dwg no | | sheet 3 of 4 |
| | | | | enr | L. FYE | 1996-07-24 | | | 76241 | | A4 |
| | | | | chr | T. BREWBAKER | 1996-07-24 | | | type | | CUSTOMER Drawing |
| | | | | appd | L. FYE | 1996-07-24 | | | | | |
| sheet index | revision | | | | | | | | | | |
| | sheet | | | | | | | | | | |



| PRODUCT NUMBER | CONTACT AREA | | TERM. AREA | | DIM H FOR | | DIM H FOR | | DIM H FOR | | OVERALL LENGTH | |
|----------------|--------------|--------|------------|--------|-----------------|--------|-----------------|--------|-----------------|--------|---------------------------------------|--------|
| | DIM A | DIM A | DIM B | DIM B | .062/1.58 BOARD | | .093/2.36 BOARD | | .125/3.18 BOARD | | DIM L | DIM L |
| | ENGLISH | METRIC | ENGLISH | METRIC | ENGLISH | METRIC | ENGLISH | METRIC | ENGLISH | METRIC | ENGLISH | METRIC |
| 76241-X29 | 0.755 | 19.18 | 0.345 | 8.76 | 0.760 | 19.30 | 0.745 | 18.92 | 0.730 | 18.54 | 1.170 | 29.72 |
| 76241-X30 | 0.710 | 18.03 | 0.345 | 8.76 | 0.715 | 18.16 | 0.700 | 17.78 | 0.685 | 17.40 | 1.125 | 28.58 |
| 76241-X31 | 0.545 | 13.84 | 0.198 | 5.03 | 0.550 | 13.97 | 0.535 | 13.59 | 0.520 | 13.21 | 0.813 | 20.65 |
| 76241-X32 | | | U N A V | A I L | A B L E | | | | | | | |
| 76241-X33 | 0.335 | 8.51 | 0.375 | 9.53 | 0.340 | 8.64 | 0.325 | 8.26 | 0.310 | 7.87 | 0.780 | 19.81 |
| 76241-X34 | 0.535 | 13.59 | 0.060 | 1.52 | 0.540 | 13.72 | 0.525 | 13.34 | 0.510 | 12.95 | 0.670 | 17.02 |
| 76241-X35 | 0.560 | 14.22 | 0.260 | 6.60 | 0.565 | 14.35 | 0.550 | 13.97 | 0.535 | 13.59 | 0.890 | 22.61 |
| 76241-X36 | 0.510 | 12.95 | 0.381 | 9.68 | 0.515 | 13.08 | 0.500 | 12.70 | 0.485 | 12.32 | 0.961 | 24.41 |
| 76241-X37 | 0.325 | 8.26 | 0.101 | 2.57 | 0.330 | 8.38 | 0.315 | 8.00 | 0.300 | 7.62 | 0.496 | 12.60 |
| 76241-X38 | 0.595 | 15.11 | 0.330 | 8.38 | 0.600 | 15.24 | 0.585 | 14.86 | 0.570 | 14.48 | 0.995 | 25.27 |
| 76241-X39 | 0.755 | 19.18 | 0.065 | 1.65 | 0.760 | 19.30 | 0.745 | 18.92 | 0.730 | 18.54 | 0.890 | 22.61 |
| 76241-X40 | 0.315 | 8.00 | 0.395 | 10.03 | 0.320 | 8.13 | 0.305 | 7.75 | 0.290 | 7.37 | 0.780 | 19.81 |
| 76241-X41 | 0.230 | 5.84 | 0.080 | 2.03 | 0.235 | 5.97 | 0.220 | 5.59 | 0.205 | 5.21 | 0.380 | 9.65 |
| 76241-X42 | | | U N A V | A I L | A B L E | | | | | | | |
| 76241-X43 | 0.504 | 12.80 | 0.329 | 8.36 | 0.509 | 12.93 | 0.494 | 12.55 | 0.479 | 12.17 | 0.900 | 22.86 |
| 76241-X44 | 0.324 | 8.23 | 0.060 | 1.52 | 0.329 | 8.36 | 0.314 | 7.98 | 0.299 | 7.59 | 0.454 | 11.53 |
| 76241-X45 | 0.499 | 12.67 | 0.060 | 1.52 | 0.504 | 12.80 | 0.489 | 12.42 | 0.474 | 12.04 | 0.629 | 15.98 |
| 76241-X46 | 0.430 | 10.92 | 0.535 | 13.59 | 0.435 | 11.05 | 0.420 | 10.67 | 0.405 | 10.29 | 1.035 | 26.29 |
| 76241-X47 | 0.375 | 55.00 | 0.070 | 1.78 | 0.380 | 9.65 | 0.365 | 9.27 | 0.350 | 8.89 | 0.515 | 13.08 |
| 76241-X48 | 0.375 | 9.53 | 0.275 | 6.99 | 0.380 | 9.65 | 0.365 | 9.27 | 0.350 | 8.89 | 0.720 | 18.29 |
| 76241-X49 | 0.545 | 13.84 | 0.070 | 1.78 | 0.550 | 13.97 | 0.535 | 13.59 | 0.520 | 13.21 | 0.685 | 17.40 |
| 76241-X50 | 0.313 | 7.95 | 0.317 | 8.05 | 0.318 | 8.08 | 0.303 | 7.70 | 0.288 | 7.32 | 0.700 | 17.78 |
| 76241-X51 | 0.320 | 8.13 | 0.060 | 1.52 | 0.325 | 8.26 | 0.310 | 7.87 | 0.295 | 7.49 | 0.455 | 11.56 |
| 76241-X52 | 0.620 | 15.75 | 0.590 | 14.99 | 0.625 | 15.88 | 0.610 | 15.49 | 0.595 | 15.11 | 1.280 | 32.51 |
| 76241-X53 | 0.295 | 7.49 | 0.187 | 4.75 | 0.300 | 7.62 | 0.285 | 7.24 | 0.270 | 6.86 | 0.552 | 14.02 |
| 76241-X54 | 0.685 | 17.40 | 0.045 | 1.14 | 0.690 | 17.53 | 0.675 | 17.15 | 0.660 | 16.76 | 0.800 | 20.32 |
| 76241-X55 | 0.230 | 5.84 | 0.130 | 3.30 | 0.235 | 5.97 | 0.220 | 5.59 | 0.205 | 5.21 | 0.430 | 10.92 |
| 76241-X56 | 0.455 | 11.56 | 0.455 | 11.56 | 0.460 | 11.68 | 0.445 | 11.30 | 0.430 | 10.92 | 0.980 | 24.89 |
| | | | | | mat'l. code | | surface | | tolerance | | projection | |
| | | | | | SEE NOTE 1 | | ASME Y14.5 | | ASME Y14.5 | | | |
| | | | | | ltr | | ecn no | | date | | tolerances unless otherwise specified | |
| | | | | | w | | | | | | XX*01/X*3 | |
| | | | | | | | | | | | XXX*005/XX*13 | |
| | | | | | | | | | | | 0°±5° | |
| | | | | | | | | | | | XXXX*0020/XXX*051 | |
| | | | | | | | | | | | scale 1:1 | |
| | | | | | | | | | | | | |
| | | | | | | | | | | | product family | |
| | | | | | | | | | | | PIN PRODUCTS | |
| | | | | | | | | | | | title | |
| | | | | | | | | | | | BERGPIN® .200"[5.08]cc | |
| | | | | | | | | | | | .039"[0.99] DIA. STAR | |
| | | | | | | | | | | | WITH SOLDER WASHER | |
| | | | | | | | | | | | dwg no | |
| | | | | | | | | | | | sheet 4 of 4 | |
| | | | | | | | | | | | size | |
| | | | | | | | | | | | 76241 | |
| | | | | | | | | | | | A4 | |
| | | | | | | | | | | | type | |
| | | | | | | | | | | | CUSTOMER Drawing | |
| | | | | | sheet index | | revision sheet | | | | | |