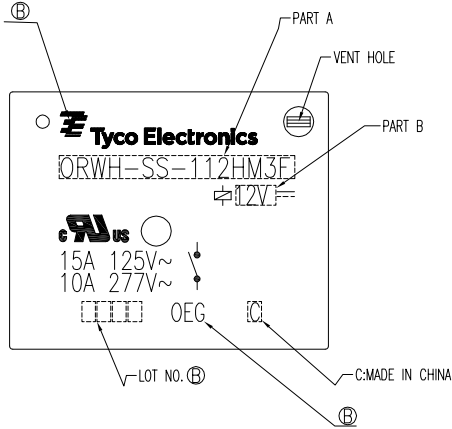
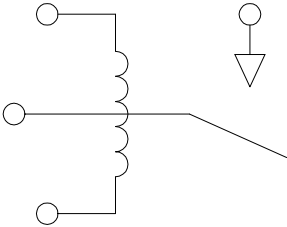


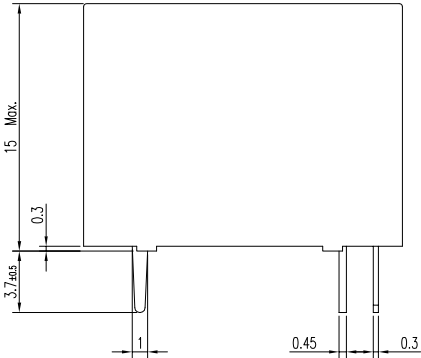
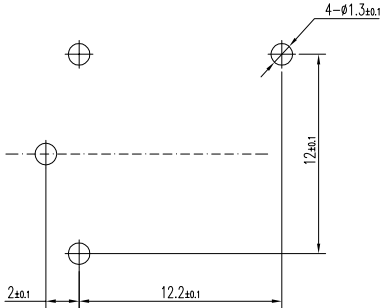
LOC HB	DIST	REVISIONS					
		P	LTR	DESCRIPTION	DATE	DWN	APVD
			C	PN. OBSOLETE	ECO-12-004810	24-APR-12	BL,L BH,Y



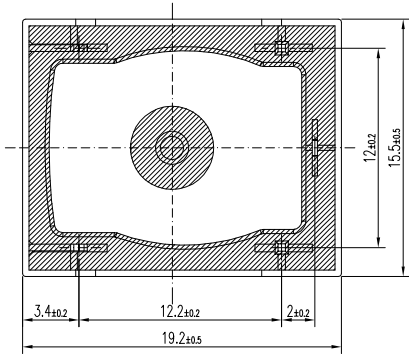
CIRCUIT DIAGRAM (BOTTOM VIEW)



DRILLING DIAGRAM (BOTTOM VIEW)

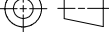


NOTE
① LOT NO. SYSTEM AS FOLLOWING:
WEEK
YEAR



GENERAL TOLERANCE

Diagram dimension	Tolerance
0.99mm max.	±0.1mm
1 - 2.99mm	±0.2mm
3mm min.	±0.3mm

				DWN	Fu Bo										
				CHK	XN.ZHANG										
DIMENSIONS: mm		<div>TOLERANCES UNLESS OTHERWISE SPECIFIED:</div> <table><tr><td>0 PLC</td><td>±</td></tr><tr><td>1 PLC</td><td>±</td></tr><tr><td>2 PLC</td><td>±</td></tr><tr><td>3 PLC</td><td>±</td></tr><tr><td>4 PLC</td><td>±</td></tr></table>		0 PLC	±	1 PLC	±	2 PLC	±	3 PLC	±	4 PLC	±	APVD	CH.HSU
0 PLC	±														
1 PLC	±														
2 PLC	±														
3 PLC	±														
4 PLC	±														
		PRODUCT SPEC	_____												
		APPLICATION SPEC	_____												
		CUSTOMER DRAWING													
MATERIAL	FINISH			_____											
SEE MATERIAL TABLE															

STATUS	PART NO	PART B	PART A	ITEM
OBSOLETE	1721958-1	3V	ORWH-SS-103HM3F	A
OBSOLETE	1721958-2	5V	ORWH-SS-105HM3F	B
OBSOLETE	1721958-3	6V	ORWH-SS-106HM3F	C
OBSOLETE	1721958-4	9V	ORWH-SS-109HM3F	D
ACTIVE	1721958-5	12V	ORWH-SS-112HM3F	E
OBSOLETE	1721958-6	18V	ORWH-SS-118HM3F	F
OBSOLETE	1721958-7	22V	ORWH-SS-122HM3F	G
OBSOLETE	1721958-8	24V	ORWH-SS-124HM3F	H
OBSOLETE	1721958-9	48V	ORWH-SS-148HM3F	I
OBSOLETE	1-1721958-0	3V	ORWH-SH-103HM3F	J
OBSOLETE	1-1721958-1	5V	ORWH-SH-105HM3F	K
OBSOLETE	1-1721958-2	6V	ORWH-SH-106HM3F	L
OBSOLETE	1-1721958-3	9V	ORWH-SH-109HM3F	M
ACTIVE	1-1721958-4	12V	ORWH-SH-112HM3F	N
OBSOLETE	1-1721958-5	18V	ORWH-SH-118HM3F	O
OBSOLETE	1-1721958-6	22V	ORWH-SH-122HM3F	P
ACTIVE	1-1721958-7	24V	ORWH-SH-124HM3F	Q
OBSOLETE	1-1721958-8	48V	ORWH-SH-148HM3F	R

		UV RESIN	UV SEAL(FOR SH)	14
		EPOXY RESIN	SEAL	13
CLASS 155 F		MW79	MAGNETIC WIRE	12
		HCP	COIL TERMINAL	11
UL94 V-0		PET	BOBBIN	10
UL94 V-0		NYLON	CASE	9
		Ag ALLOY	STATIONARY CONTACT	8
		Ag ALLOY	MOVABLE CONTACT	7
		Cu ALLOY	MOVABLE SPRING	6
		Cu ALLOY	DUMMY TERMINAL	5
		Cu ALLOY	NO TERMINAL	4
	Ni PLATED	STEEL	CORE	3
	Cu PLATED	STEEL	ARMATURE FORM C	2
	Ni PLATED	STEEL	YOKE	1
INCOMBUSTIBILITY	TREATMENT	MATERIAL	DESCRIPTION	ITEM



ORWH-HM3F ,000 CUSTOMER DRAWING

SIZE	GAGE CODE	DRAWING NO	RESTRIC TO
A3	00779	1721958	
SCALE 3:1		SHEET 1 OF 1	REV C

Mouser Electronics

Authorized Distributor

Click to View Pricing, Inventory, Delivery & Lifecycle Information:

[TE Connectivity:](#)

[ORWH-SS-112HM3F,000](#)