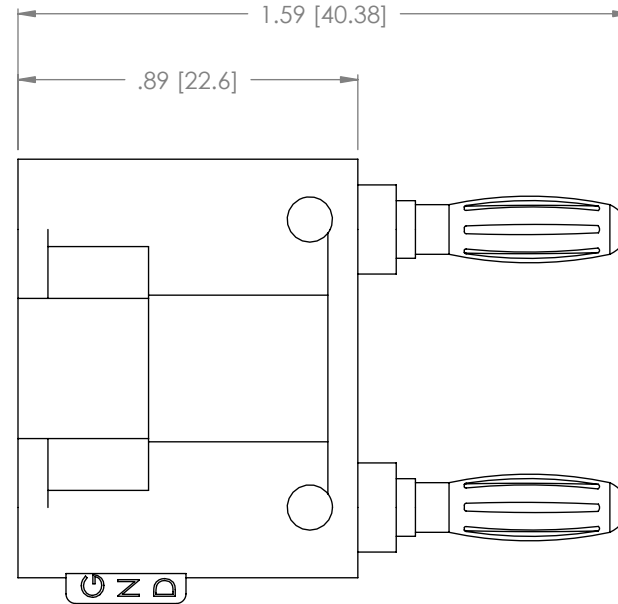
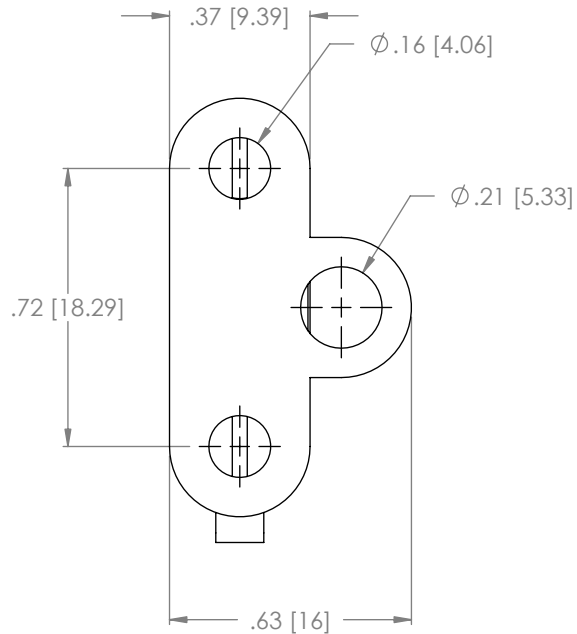


THE INFORMATION CONTAINED IN THIS DRAWING IS THE SOLE  
PROPERTY OF L-COM, INC. ANY REPRODUCTION IN PART OR WHOLE  
WITHOUT THE WRITTEN PERMISSION OF L-COM, INC. IS PROHIBITED.

REVISIONS			
REV	DESCRIPTION	DATE	CHANGED BY
A	INITIAL RELEASE	12/29/03	MCCORMICK
B	ECN 3194: UPDATE DWG FORMAT	2/8/08	D.GRIFFIN



#### NOTES:

#### MATERIAL:

BODY: POLYETHYLENE  
PLUGS: COPPER

#### FINISH:

PLUGS: GOLD PLATE

#### ELECTRICAL:

CONTACT RESISTANCE: <20m  
INSULATION RESISTANCE: >100m  
WITHSTAND VOLTAGE: DC150V  
CURRENT RATING: 2A/DC100V  
OPERATING TEMPERATURE: -30 °C TO 60 °C

#### PACKAGING:

INDIVIDUALLY PACKAGE IN A POLYBAG

**RoHS Compliant** ✓

UNLESS OTHERWISE SPECIFIED, DIMENSIONS ARE IN INCHES [mm]  TOLERANCES TO BE: .X ±.1 [2.5]    ANGLES ±2° .XX ±.01 [.25] .XXX ±.005 [.13]  OVERALL CABLE LENGTH TOL: ≤ 60 [1524] +3 [76.2] / -0 > 60 [1524] +5% / -0%	APPROVALS	DATE	L-com CONNECTIVITY PRODUCTS		01845	
	DRAWN BY C.MCCORMICK	12/29/2003	CATEGORY		COAXIAL	
	CHECKED BY D.PARHAM	12/29/2003	PRODUCT DESCRIPTION		CONNECTOR DUAL BANANA PLUG	
	APPROVED BY R.CARRICK	12/29/2003	SIZE <b>A</b>	FSCM NO. <b>43321</b>	DWG. NO. BP125209	REV. <b>B</b>
PROJ 	CONFIGURATION DETAILS OF UNDIMENSIONED FEATURES MAY VARY		SCALE: NONE		CAD FILE: BP125209.SLDDRW	
			SHEET 1 OF 1			