



TORCOFIX K / K US

Robust torque wrench with square drive and integrated ratchet-head function for controlled bi-directional tightening.



Working accuracy: $\pm 3\%$ tolerance of scale set torque. Includes test certificate according to DIN EN ISO 6789. Serial number on the wrench and on the certificate for unambiguous product identification, traceable to national standards.



Scale: Easily readable dual scale (N-m / lbf-in / lbf-ft) well protected under a window with a magnifying-glass effect. The torque setting is readable on the scale or, more particularly, on the scale in combination with the scale ring.

Micrometer scale: Optimised shape, stable scale frame with red-shaded micrometer scale ring. Model-dependent intervals of 0.25; 0.1 or 0.025 N-m allow very accurate settings.

Lightweight and reliable: Locking button enables reliable locking of the torque setting.



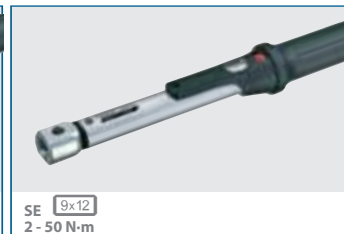
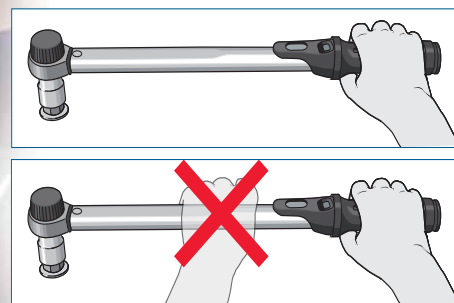
Chrome-plated ratchet head: All 1/4" - 3/8" square drives of the TORCOFIX K-series have a black plastic cap - also referred to as a mushroom head. This mushroom head prevents an unintentional pulling out of the whole square drive when changing the nut socket.



Automatic actuation: The TORCOFIX actuates with a clear tactile impulse and audible signal and is immediately ready for operation again.

Robust steel tube: With high corrosion protection, chrome-plated, silk-metal.

Handgrip with a user aid: Black plastic handgrip, new ergonomically enhanced shape, with an indentation in the middle of the handgrip. User aid and reference points for calibration.





TORCOFIX K

4549

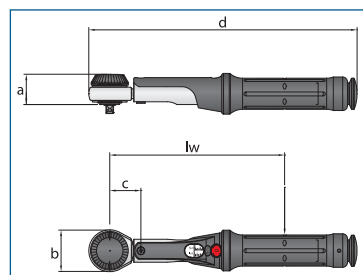
TORQUE WRENCH TORCOFIX K 1-50 N-m / 0.75-37 lbf-ft

Use:

- Controlled screw tightening in the most widely used range of 1 - 50 N-m / 0.75 - 37 lbf-ft
- For use in almost all industrial manufacturing areas

Features:

- Classified to DIN EN ISO 6789:2003 Type II Class A, with a factory certificate. Working accuracy: +/- 3 % tolerance of scale set torque. The specification of the standard (+/- 4 %) is exceeded.
- Adjustable torque wrench with square drive and integrated ratchet function for controlled bi-directional tightening
- 1/4", 3/8" interchangeable mushroom head with ball locking device as per DIN 3120 - A 6.3 or A 10, similar to ISO 1174
- With certificate acc. to DIN EN ISO 6789, traceable via in-house DKD laboratory to national standards
- Release system triggers a tactile and audible signal
- Sturdy, satin chrome-plated tubular steel design, with chrome-plated ratchet head and high-quality plastic parts
- Dual scale N-m and lbf-ft below a window with a magnifying glass effect
- Magnifying glass with marking for minimum paralaxe errors allows a high degree of safety when setting the requisite torque value
- Additional micrometre scale for setting interim values
- Ergonomically shaped, convenient black plastic handgrip, with an indentation in the middle as a calibration aid

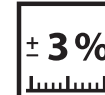
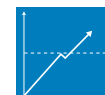

6.3
1/4"
10
3/8"


Code	No.	■"	■	N-m	lbf-ft	كاسيس	scale ring	lw	a	b	c	d	↺↻	£
2201429	4549-00	1/4	6.3	1-5	0,75-3,7	0,25 N-m	0,025 N-m	146.0	25.3	35	26	224.0	323	
1545132	4549-02	1/4	6.3	2-25	1,5-18	1 N-m	0,1 N-m	206.5	24.0	35	26	284.5	450	
1545140	4549-05	3/8	10.0	5-50	3,5-37	2,5 N-m	0,25 N-m	256.5	24.0	35	26	334.5	540	

4549-G

TORQUE WRENCH SET TORCOFIX K 1-50 N-m / 0.75-37 lbf-ft

- The TORCOFIX K as a practical tool set
- Most-widely-used tools in a robust sheet-metal case
- Clearly organised - everything always ready to hand
- With foam-material inlay modules (on request, these can be customised or extended individually)


6.3
1/4"
10
3/8"


Code	No.	■"	■	Contents	N-m	lbf-ft	كاسيس	↺↻	£
2312646	4549-G00	1/4	6.3	No. 4549-00 - in sheet-metal case ○ 7 8 10 13 55 mm and 1/4" square drive	1-5	0,75-3,7	0,25 N-m	3.0	
1547003	4549-G02	1/4	6.3	No. 4549-02 - in sheet-metal case ○ 7 8 10 13 55 mm and 1/4" square drive	2-25	1,5-18	1 N-m	3.2	
1547011	4549-G05	3/8	10.0	No. 4549-05 - in sheet-metal case ○ 8 10 13 17 125 mm and 3/8" square drive	5-50	3,5-37	2,5 N-m	3.5	



MAGIC 4550 - MAGIC 4551

Torque wrench TORCOFIX K

1-850 N·m / 0.75-630 lbf·ft

- Robust, silk-matt chrome-plated steel tube construction
- With chrome-plated ratchet head and glass-fibre-reinforced plastic parts
- Integrated ratchet function, with interchangeable mushroom head, push through square drive (up from no. 4550-40)
- For controlled bi-directional tightening by simply switching the square
- Classified to DIN EN ISO 6789:2003 Type II Class A, with a factory certificate.
Working accuracy: +/- 3% tolerance of scale set torque.
The specification of the standard (+/- 4%) is exceeded.



12,5 1/2 20 3/4



Code	No.	■ "	N·m	lbf·ft	┌─ mm ─┐	└─ N·m ─┘	└─ lbf·ft ─┘
2240467	MAGIC 4550-10	1/2	10-100	8-75	394	0,5 N·m	900
2240475	MAGIC 4550-20	1/2	20-200	15-150	485	1 N·m	1100
2240483	MAGIC 4550-30	1/2	60-300	45-220	577	1 N·m	1400
2240491	MAGIC 4550-40	3/4	75-400	55-300	686	1 N·m	2000
2240505	MAGIC 4550-55	3/4	100-550	75-405	956	1 N·m	3800
2240513	MAGIC 4550-75	3/4	140-750	105-550	1236	1 N·m	4800
2240521	MAGIC 4551-85	3/4	250-850	185-630	1379	1 N·m	4735

Certified precision. Traceable safety.

- DKD calibration in our own accredited, independent DKD calibration laboratory

DKD calibration

Factory calibration