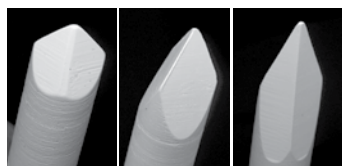


## OPTIMIZED TIP GEOMETRY FOR LEAD FREE TESTING

IDI has invested significantly in the discovery of the ideal tip for lead-free applications. IDI's research and testing laboratory, the industry's most advanced, developed a special test system which permitted IDI to compare the performance of various tip styles when cycled against matte tin, the most aggressive test contact material in terms of contamination and rapid tip wear. Through this process, the obtuse blade ('LF') tip showed itself to be by far the most reliable—its rugged shape retains its integrity far longer than more acute designs.

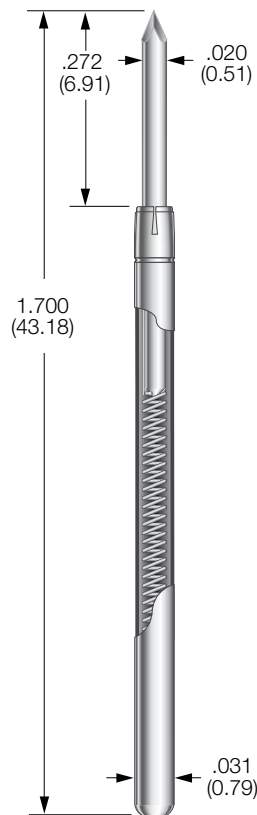


Obtuse blade      15° 3-sided chisel      Acute dagger

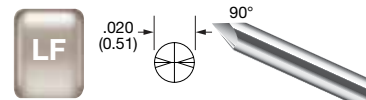
IDI's unique Duralloy™ plating provides a clear advantage over competitors. Duralloy is noble and is exceptionally resistant to corrosion and oxidation. It remains bright and untarnished in atmospheric exposure. Duralloy is extremely smooth when plated and does not develop microcracks. It is very thick and completely nonporous. This surface greatly contributes to Duralloy's ability to resist corrosion and limit wear. Duralloy is slightly more resistive than gold, and is not recommended for extremely sensitive measurements.

## LEAD FREE TEST PROBE

### ICT-50J-LF PROBE



## STEEL PLUNGER TIP



## PROBE SPECIFICATIONS

**Minimum Centers:** .050 (1.27)

**Current Rating:** 3 amps continuous

**Spring Force:** 7.0 oz. @ .170 (4.32) travel

**Typical Resistance:** < 60 mΩ against a lead free surface

**Maximum Travel:** .250 (6.35)

**Working Travel:** .170 (4.32)

## MATERIALS

**Barrel:** Nickel/silver, gold lined

**Spring:** Music wire, nickel plated

**Plunger:** Steel, Duralloy™ plated

## HOW TO ORDER

<b>ICT</b>	<b>50J</b>	<b>LF</b>	<b>7</b>	<b>DGD</b>	<b>S</b>
SERIES	SIZE	TIP STYLE	SPRING FORCE	PLATING OPTIONS	STEEL PLUNGER

Specifications subject to change without notice. Dimensions in inches (millimeters)



# Mouser Electronics

Authorized Distributor

Click to View Pricing, Inventory, Delivery & Lifecycle Information:

IDI:

[ICT-50J-LF-7-DGD-S](#)