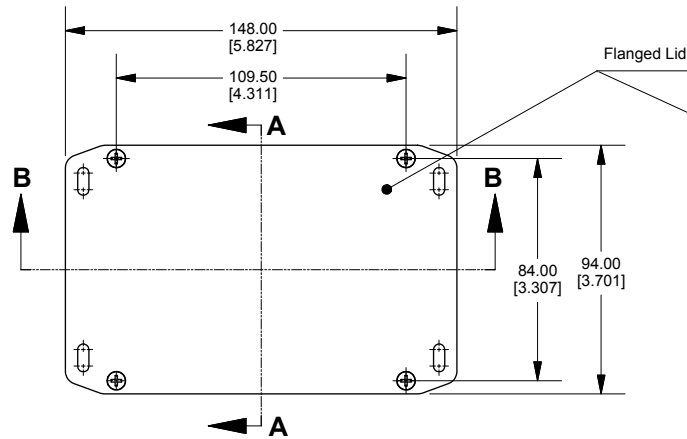
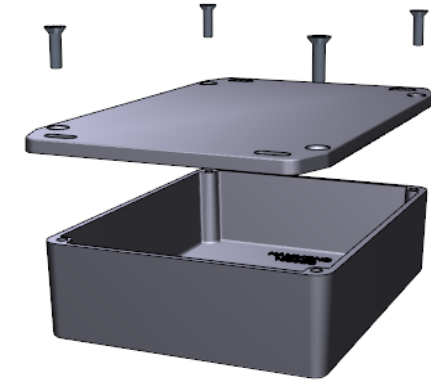
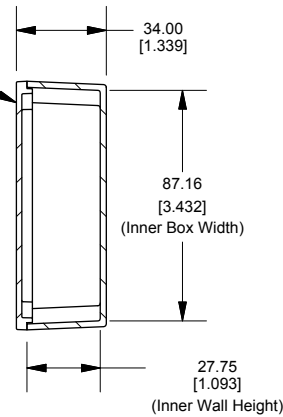


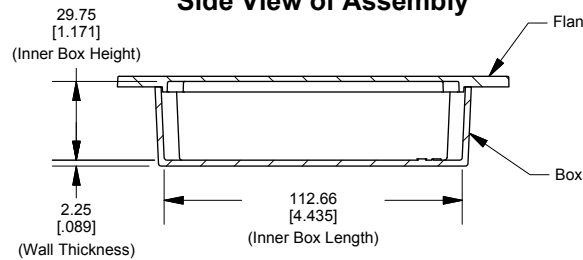
Top View of Assembly



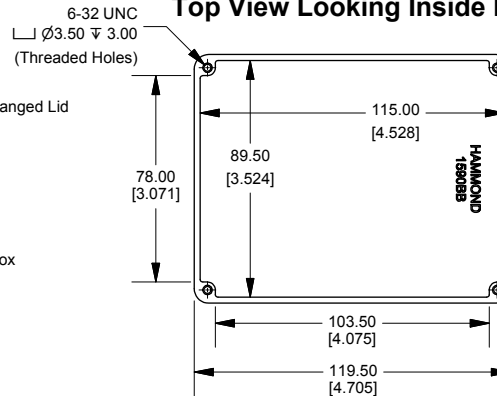
SECTION A-A End View of Assembly



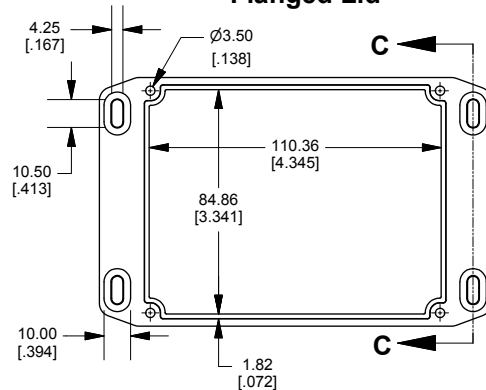
SECTION B-B Side View of Assembly



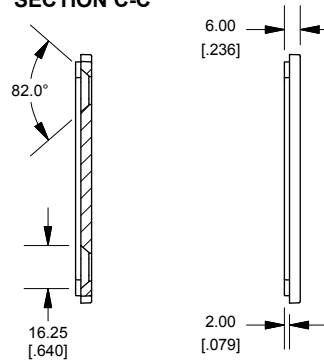
Top View Looking Inside Box



Flanged Lid



Side View of Slot SECTION C-C



Enclosures can be Factory Modified (Milling, Drilling, Printing etc.)
Contact Factory mjm@hammondmfg.com for quotes
Solid models of this enclosure in STEP or IGES.

NOTE

Purchased assembly includes box, lid and 4 cover screws.
Box and lid are made from Diecast Aluminum Alloy.
Silicone Gasket supplied with liquid resistant enclosure.

PART NUMBERS

1590BBFL Enclosure

Natural Finish Enclosure	1590BBFL
Black Textured Enclosure	1590BBFLBK

1590BBFL Liquid Resistant Enclosure (Silicone Gasket)

Natural Finish Enclosure	1590WBBFL
Black Textured Enclosure	1590WBBFLBK

ACCESSORIES

Recommended Torque: 75 ozf.in / 55 cN.m

Liquid Resistant Cover Screws

Stainless Steel Cover Screws (Pkg 100) [6-32 x 1/2" With O-Ring]	1590WMS100
---	------------

Black Stainless Steel Cover Screws (Pkg 100) [6-32 x 1/2" With O-Ring]	1590WMS100BK
---	--------------

Standard Cover Screws

Plated Cover Screws (Pkg 100) [6-32 x 1/2"]	1590MS100
--	-----------

Black Cover Screws (Pkg 100) [6-32 x 1/2"]	1590MS100BK
---	-------------

Dimensions:
mm
[inches]



Mouser Electronics

Authorized Distributor

Click to View Pricing, Inventory, Delivery & Lifecycle Information:

Hammond:

[1590BBFL](#) [1590WBBFL](#) [1590WBBFLBK](#) [1590BBFLBK](#)