

TE-type Twin Wheel Caster



Characteristic

Double wheel mechanism.
Outer wheel made of elastomer gives little damage and stains on the floor, and its running sounds are very quiet.
New stopper is applied to obtain better operability.
Stop both swivel and turn which is suitable for vibration machines.

Application

Medical instruments /
Office automation appliances /
Audio racks / Television stands /
Wagons

Part Name	Material
Main Body	PA
Inner Wheel	
Outer Wheel	Elastomer

Specification

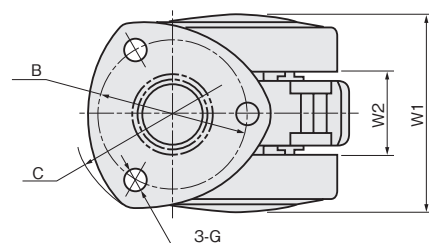
Model No.	Type		Allowable Load (kg)	Code No.
	Shape	Stopper		
TE50	Plate type	—	50	19001
TE50S		With stopper		19006
TE50N3	Screw type	—		19002
TE50N3S		With stopper		19007
TE50N8		—		19003
TE50N8S		With stopper		19008
TE50N10		—		19004
TE50N10S		With stopper		19009
TE50N12		—		19005
TE50N12S		With stopper		19010
TE130N16		—	140	19064
TE130N16WS		With double stopper		19065

Size List Plate type

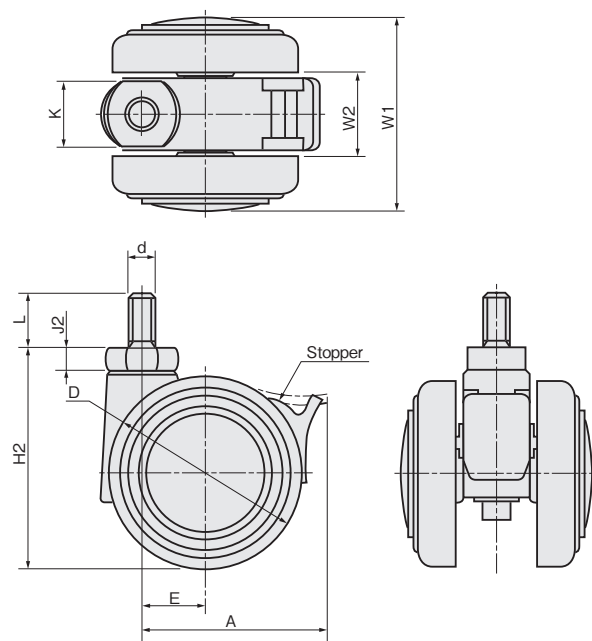
Model No.	A	B	C	D	E	G	H1	J1	W1	W2
TE50・TE50S	49	φ40	φ54	φ50	17	φ5.5	65	t3	49	21

※Dimension A shows caster with stopper only.

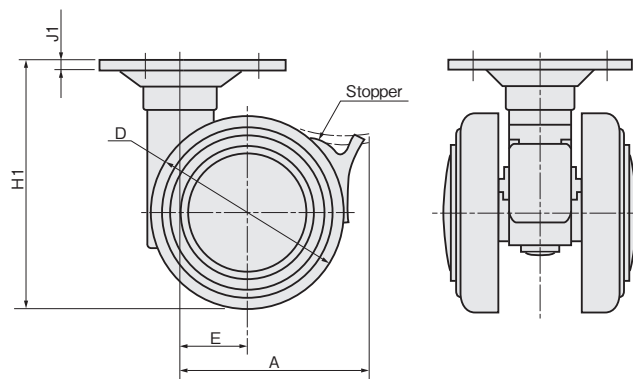
Plate type



Screw type



This drawing shows caster with stopper.



This drawing shows caster with stopper.

Size List Screw type

Model No.	A	D	E	d	H2	J2	K	L	W1	W2
TE50N3 -N3S	49	φ50	17	W3/8-16	57.5	t6	17	19	49	21
TE50N8 -N8S				M8×1.25						
TE50N10 -N10S				M10×1.5						
TE50N12 -N12S				M12×1.75						
TE130N16- N16WS	110	φ130	35	M16×2.0	145	t8	21	25	70.2	29

※Dimension A shows caster with stopper only.