



One-Piece SMS Surface Mount Shield Vented

Leader Tech Vented SMS - Surface Mount Shields offer a highly reliable, cost effective, off-the-shelf solution for most vented surface mount shielding applications. Our vented SMS shields are supplied in tape & reel packaging and are suited for any volume application including automated pick and place assembly operations.

Our one piece vented SMS style can be specified for applications that require no inspection or repair of shielded elements.

Note: Click on part number to see Technical Drawing

ONE-PIECE SURFACE MOUNT SHIELD VENTED							
Part Number*	Part Name	Shield Width	Shield Length	Shield Height	Parts per Reel	Material	Finish
SMS-101	Surface Mount Shield	0.500	0.538	0.100	1000	.008" Pre-Tin Steel	Matte
SMS-101-N	Surface Mount Shield	0.500	0.538	0.100	1000	.008" Alloy 770	N/A
SMS-102	Surface Mount Shield	0.650	0.650	0.142	700	.008" Pre-Tin Steel	Matte
SMS-102-N	Surface Mount Shield	0.650	0.650	0.142	700	.008" Alloy 770	N/A
SMS-103	Surface Mount Shield	1.032	1.032	0.200	300	.008" Pre-Tin Steel	Matte
SMS-103-N	Surface Mount Shield	1.032	1.032	0.200	300	.008" Alloy 770	N/A
SMS-104	Surface Mount Shield	1.260	1.260	0.236	225	.008" Pre-Tin Steel	Matte
SMS-104-N	Surface Mount Shield	1.260	1.260	0.236	225	.008" Alloy 770	N/A
SMS-105	Surface Mount Shield	1.000	1.500	0.236	250	.008" Pre-Tin Steel	Matte
SMS-105-N	Surface Mount Shield	1.000	1.500	0.236	250	.008" Alloy 770	N/A
SMS-106	Surface Mount Shield	1.326	1.450	0.200	300	.008" Pre-Tin Steel	Matte
SMS-106-N	Surface Mount Shield	1.326	1.450	0.200	300	.008" Alloy 770	N/A
SMS-107	Surface Mount Shield	1.747	1.747	0.384	120	.008" Pre-Tin Steel	Matte
SMS-107-N	Surface Mount Shield	1.747	1.747	0.384	120	.008" Alloy 770	N/A

Applications

- Short lead times
- Automatic placement
- Cost effective
- No tooling costs

Material

Pre-tin plated steel

One-Piece SMS Shields Vented

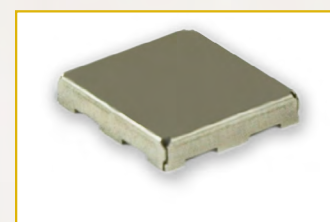
One-Piece

- Form down construction supplied in tape & reel packaging



Shield shown in tape & reel packaging

Also Available



One-Piece SMS Mount Shield (Unvented)

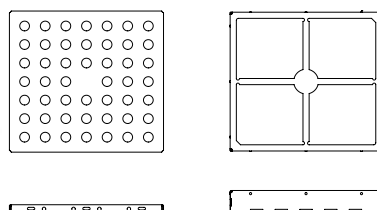


SURFACE MOUNT SHIELD

LT Product Profile

00403-C

**LEADER
TECH**
a HEICO company
The Leading Edge in EMI Shielding Technology



Two-Piece SMS Surface Mount Shield Vented

Leader Tech Vented SMS - Surface Mount Shields offer a highly reliable, cost effective, off-the-shelf solution for most vented surface mount shielding applications. Our vented SMS shields are supplied in tape & reel packaging and are suited for any volume application including automated pick and place assembly operations.

For board applications that require inspection, we offer a two piece Leader Tech vented SMS shield. This style allows for fast and easy removal of the cover providing full access to components.

Note: Click on part number to see Technical Drawing

TWO-PIECE SURFACE MOUNT SHIELD VENTED							
Part Number*	Part Name	Frame Width	Frame Length	Frame Height	Parts per Reel	Material	Finish
SMS-201	Surface Mount Shield	0.500	0.538	0.100	1000	.008" Pre-Tin Steel	Matte
SMS-201-N	Surface Mount Shield	0.500	0.538	0.100	1000	.008" Alloy 770	N/A
SMS-202	Surface Mount Shield	0.650	0.650	0.142	700	.008" Pre-Tin Steel	Matte
SMS-202-N	Surface Mount Shield	0.650	0.650	0.142	700	.008" Alloy 770	N/A
SMS-203	Surface Mount Shield	1.034	1.034	0.200	300	.010" Pre-Tin Steel	Bright
SMS-203-M	Surface Mount Shield	1.032	1.032	0.200	300	.008" Pre-Tin Steel	Matte
SMS-203-N	Surface Mount Shield	1.032	1.032	0.200	300	.008" Alloy 770	N/A
SMS-204	Surface Mount Shield	1.260	1.260	0.236	225	.008" Pre-Tin Steel	Matte
SMS-204-N	Surface Mount Shield	1.260	1.260	0.236	225	.008" Alloy 770	N/A
SMS-205	Surface Mount Shield	1.000	1.500	0.236	250	.008" Pre-Tin Steel	Matte
SMS-205-N	Surface Mount Shield	1.000	1.500	0.236	250	.008" Alloy 770	N/A
SMS-206	Surface Mount Shield	1.326	1.450	0.200	300	.008" Pre-Tin Steel	Matte
SMS-206-N	Surface Mount Shield	1.326	1.450	0.200	300	.008" Alloy 770	N/A
SMS-207	Surface Mount Shield	1.747	1.747	0.384	120	.008" Pre-Tin Steel	Matte
SMS-207-N	Surface Mount Shield	1.747	1.747	0.384	120	.008" Alloy 770	N/A
SMS-208	Surface Mount Shield	1.559	1.559	0.276	135	.008" Pre-Tin Steel	Matte
SMS-208-N	Surface Mount Shield	1.559	1.559	0.276	135	.008" Alloy 770	N/A
SMS-209	Surface Mount Shield	0.728	1.156	0.276	400	.008" Pre-Tin Steel	Matte
SMS-209-N	Surface Mount Shield	0.728	1.156	0.276	400	.008" Alloy 770	N/A
SMS-210	Surface Mount Shield	1.201	1.732	0.118	370	.008" Pre-Tin Steel	Matte
SMS-210-N	Surface Mount Shield	1.201	1.732	0.118	370	.008" Alloy 770	N/A
SMS-251	Surface Mount Shield	1.500	2.000	0.200	150	.012" Pre-Tin Steel	Matte
SMS-252	Surface Mount Shield	1.034	1.034	0.070	300	.010" Pre-Tin Steel	Bright
SMS-254	Surface Mount Shield	1.034	1.034	0.098	300	.010" Pre-Tin Steel	Bright
SMS-255	Surface Mount Shield	0.750	0.750	0.200	300	.008" Pre-Tin Steel	Matte

*SMS-2XX-C: Part number when ordering cover only
SMS-2XX-F: Part number when ordering frame only

**LEADER
TECH**
a HEICO company

Global EMI Shielding Technology Center
12420 Race Track Rd., Tampa, Florida 33626
866.TECH.EMI (866.832.4364) † 813.855.6921 ‡ 813.855.3291

STATEMENT OF LIEU OF WARRANTY: All technical information and data in this document is based on tests and is believed to be accurate and reliable. Nevertheless, since the products described herein are not provided to conform with mutually accepted specifications and the use thereof is unknown, the manufacturer and seller of the products do not guarantee results, freedom from patent infringement, or suitability of the products for any application thereof. The manufacturer and seller of the products described in this document will provide all possible technical assistance and will replace any products proven defective. No statement or recommendations made by the manufacturer or seller not contained herein shall have any force of effect unless in conformity with an agreement signed by an officer of the seller and manufacturer. Product testing by the purchaser is recommended in order to confirm expected results.

Applications

- Short lead times
- Automatic placement
- Cost effective
- No tooling costs

Material

Pre-tin plated steel

Two-Piece SMS Shields Vented

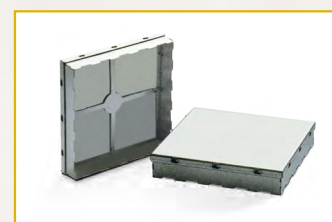
Two-Piece

- Frame & cover, form down construction (frame supplied in tape & reel packaging)



Frame shown in tape & reel packaging

Also Available



Two-Piece SMS Mount Shield (Unvented)

SMS
SURFACE MOUNT SHIELD

A passion in all we do
www.LeaderTechInc.com

ISO 9001: 2008
CERTIFIED

RoHS
COMPLIANT

Mouser Electronics

Authorized Distributor

Click to View Pricing, Inventory, Delivery & Lifecycle Information:

LeaderTech:

[SMS-204-C](#) [SMS-101](#) [SMS-104](#) [SMS-201-C](#) [SMS-206-F](#) [SMS-205-F](#) [SMS-203-C](#) [SMS-102](#) [SMS-204-F](#) [SMS-103](#) [SMS-203-F](#) [SMS-207-C](#) [SMS-205-C](#) [SMS-206-C](#) [SMS-201-F](#) [SMS-105](#) [SMS-107](#) [SMS-207-F](#) [SMS-210-F](#) [SMS-202-F](#) [SMS-106](#) [SMS-202-C](#) [SMS-210-C](#) [SMS-254-F](#) [SMS-251-C](#) [SMS-250-C](#) [SMS-252-C](#) [SMS-252-F](#) [SMS-251-F](#) [SMS-254-C](#) [SMS-250-F](#)