

#### Specifications

Insulation Resistance:	1,000MΩ min. at 500V DC
Withstanding Voltage:	500V ACrms for 1 minute
Contact Resistance:	100mΩ at 1mA / 20mV max.
Voltage Rating:	50Vrms AC
Current Rating:	0.5A
Operating Temp. Range:	-25°C to +85°C
Coplanarity:	≤ 0.1mm
Reflow Temp.:	220°C for max.60 secs.,260° peak / 10 secs.
Mating Cycles:	10,000 (office environment)

#### Materials and Finish

Insulator:	LCP (black)
Shielding Plate:	SUS
Contacts:	Base PB, Plating Ni-Au

#### Features

- Card lock mechanism
- Smooth extraction function by Push-in/ Push-out of card
- Reversed type
- Tape & Reel packaging  
(PJS008-2003-0 = 1,000 / PJS008-2003-1 = 800 pcs / reel)
- Card detector

#### Part Number (Details)

PJS 008 - 2003 - \*

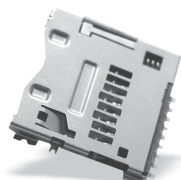
Series No.

Number of Contacts

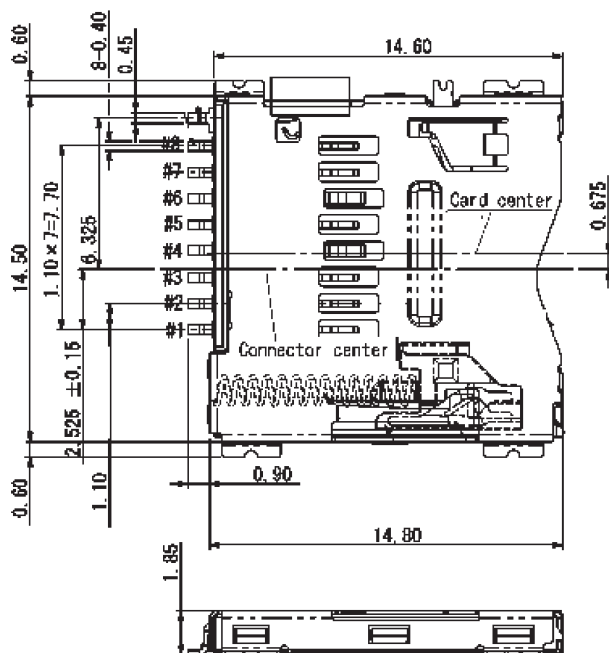
Design No.

0 = without Positioning Pins

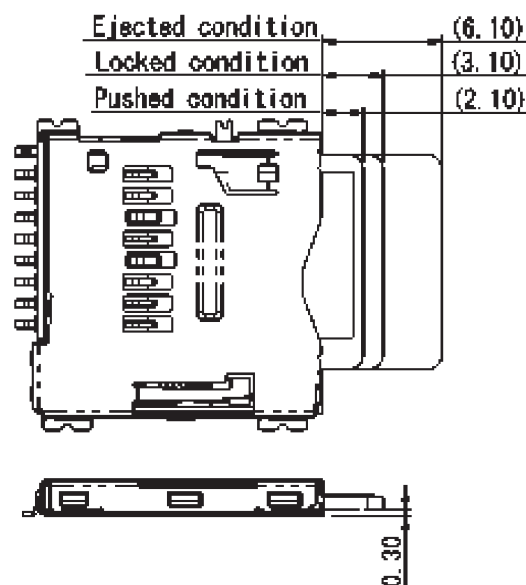
1 = with Positioning Pins



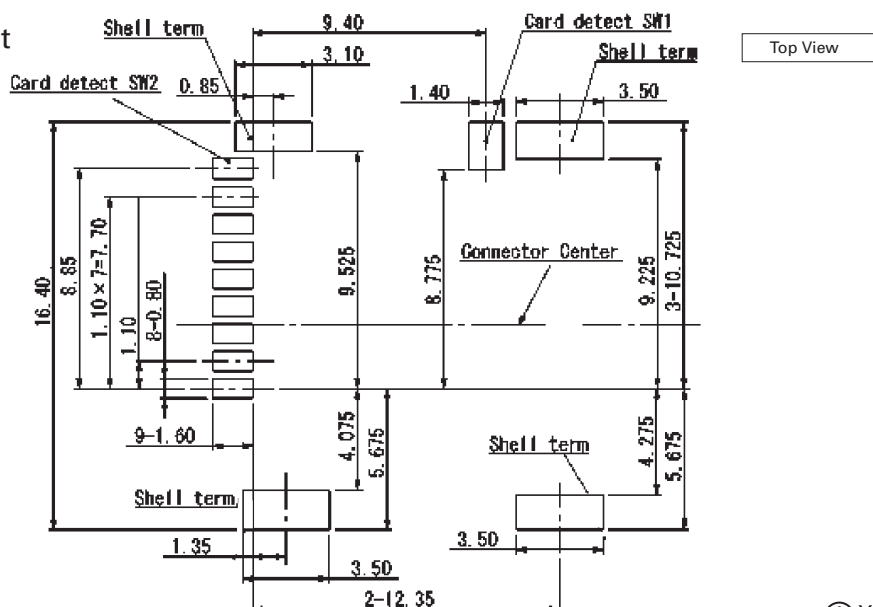
#### Outline Dimensions for PJS008-2003-0



#### Card Insertion Details



#### Recommended PCB Layout



# Mouser Electronics

Authorized Distributor

Click to View Pricing, Inventory, Delivery & Lifecycle Information:

[Yamaichi Electronics:](#)

[PJS008-2003-0](#)