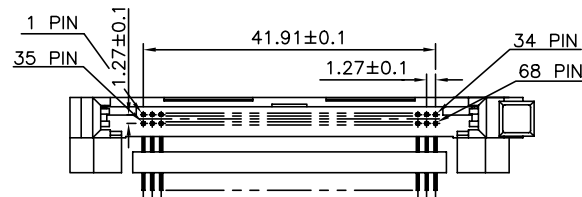
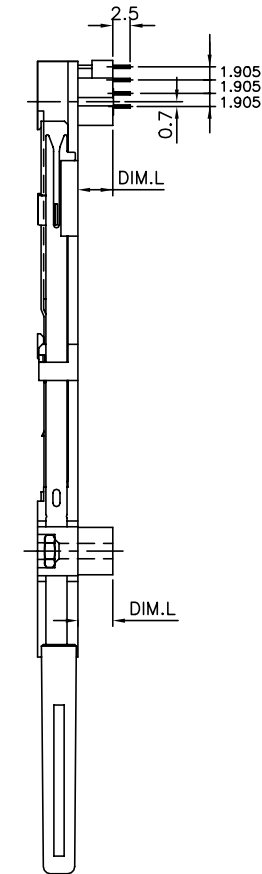
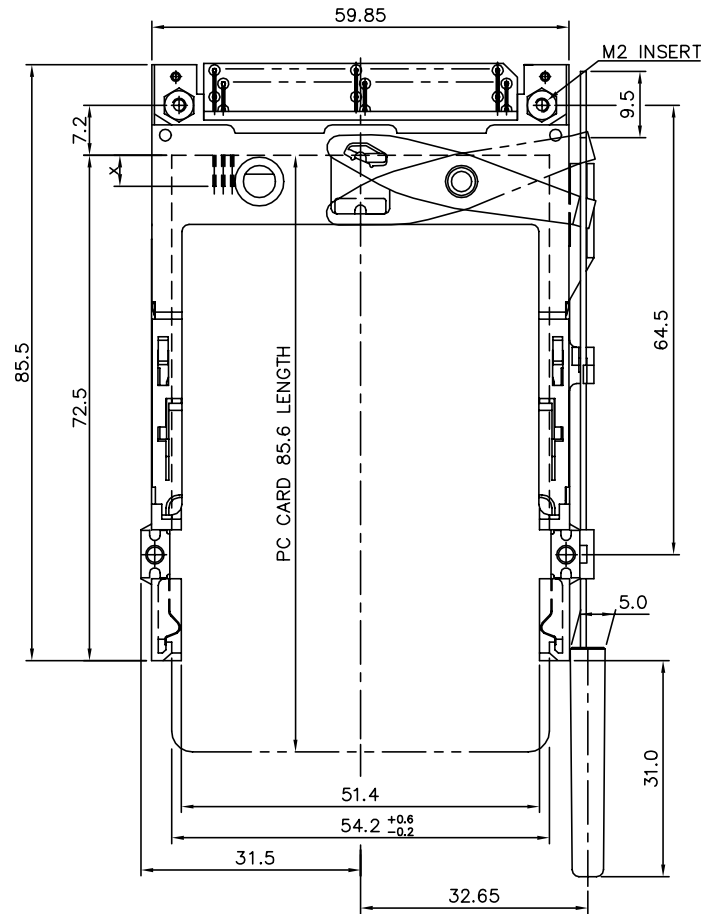
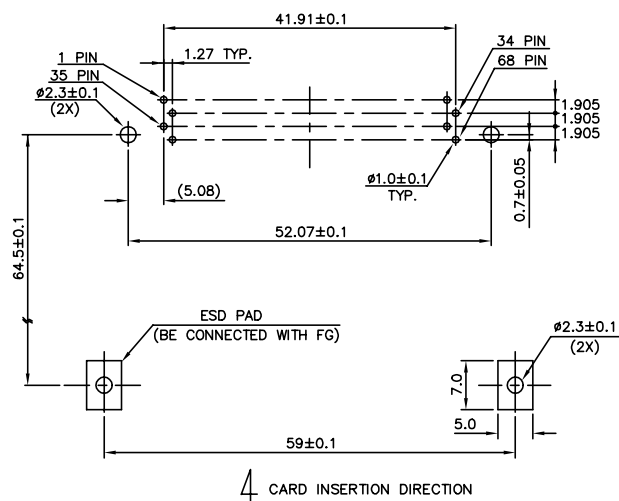


| PRODUCT NO. | DIM.L |
|------------------|-------|
| 10001489-050HA | 5.0 |
| 10001489-056HA | 5.6 |
| 10001489-050HALF | 5.0 |
| 10001489-056HALF | 5.6 |



| mat'l. code | | | | surface | | tolerance | | projection | | product family | |
|---------------------------------------|--|--|--|---------------------------|--|---------------------------|--|-------------------------|--|----------------------------|--|
| ISO1302 | | | | ISO1101 | | ISO406 | | MM | | PCMCIA | |
| tolerances unless otherwise specified | | | | angle | | ±0.30 | | scale 1:1 | | SINGLE DECK EJECTOR HEADER | |
| A T20084 WL 03/18/02 | | | | B T03-0017 WL 01/16/03 | | C T03-0079 WL 03/05/03 | | D N04-0092 WB 12/01/04 | | E BX-N-011448 ZK 04/10/12 | |
| dr WENDY CHEN 02/22/02 | | | | eng MINERVA WANG 02/22/02 | | chr MINERVA WANG 02/22/02 | | appd JENN TSAO 02/22/02 | | dwg no 10001489 | |
| sheet index | | | | revision | | E E | | type | | Product Customer Drawing | |
| sheet 1 | | | | revision 2 | | E E | | type | | Product Customer Drawing | |

| PRODUCT NO. | DIM.L |
|------------------|-------|
| 10001489-050HA | 5.0 |
| 10001489-056HA | 5.6 |
| 10001489-050HALF | 5.0 |
| 10001489-056HALF | 5.6 |



NOTES:

1. MATERIAL

1.1 HEADER ASS'Y :

PLASTIC :HIGH TEMPERATURE THERMOPLASTIC UL94V-0 BLACK
PIN :COPPER ALLOY

1.2 EJECT MECHANISM ASS'Y :

PLASTIC :GUIDE:HIGH TEMPERATURE THERMOPLASTIC UL94V-0 BLACK
:BUTTON:HIGH TEMPERATURE THERMOPLASTIC UL94V-0 BLACK
PLATE :STAINLESS
EMI CONTACT:PHOSPHOR BRONZE

2. FINISH (PIN)

UNDER PLATING :0.5 µm MIN. Ni
CONTACT AREA :0.076 µm MIN. GOLD
SOLDER TAIL(TIN LEAD) : 2.5 µm MIN. Sn-Pb
SOLDER TAIL(LEAD-FREE) :2.5 µm MIN. PURE TIN

3. DIM "X"

| | | |
|----------|---------|------------------|
| 4.25±0.1 | 3.5±0.1 | 5.0±0.1 |
| OTHERS | 36,67 | 1,17,34,35,51,68 |

4. IF LEAD FREE P.N.THE HOUSING WILL WITHSTAND EXPOSURE TO 260°C PEAK TEMPERATURE FOR 10 SECONDS IN A WAVE SOLDER APPLICATION WITH A 1.00MM MINIMUM THICK CIRCUIT BOARD.

5. IF LEAD FREE P/N.THE PRODUCT MEETS EUROPEAN UNION DIRECTIVES AND OTHER COUNTRY REGULATIONS AS DESCRIBED IN GS-22-008

6. LEAD FREE P/N PACKAGING MEETS GS-14-920 SPECIFICATION

7. PRODUCT SPEC:110-263

| | | | | |
|------------------------|---------------------------------------|-----------------------------|------------------------|--|
| mat'l. code | surface ISO1302 | tolerance ISO1101 ISO406 | projection ISO 1101 | product family PCMCIA |
| ltr ecn nodr date | tolerances unless otherwise specified | angle 0°±2' | scale 1:1 | title SINGLE DECK EJECTOR HEADER 5.0V R/A TYPE 1/2/3 |
| dr WENDY CHEN 02/22/02 | eng MINERVA WANG 02/22/02 | chr MINERVA WANG 02/22/02 | app JENN TSAO 02/22/02 | dwg no 10001489 sheet 2 of 2 size A4 |
| sheet index | revision sheet | | | type Product Customer Drawing |