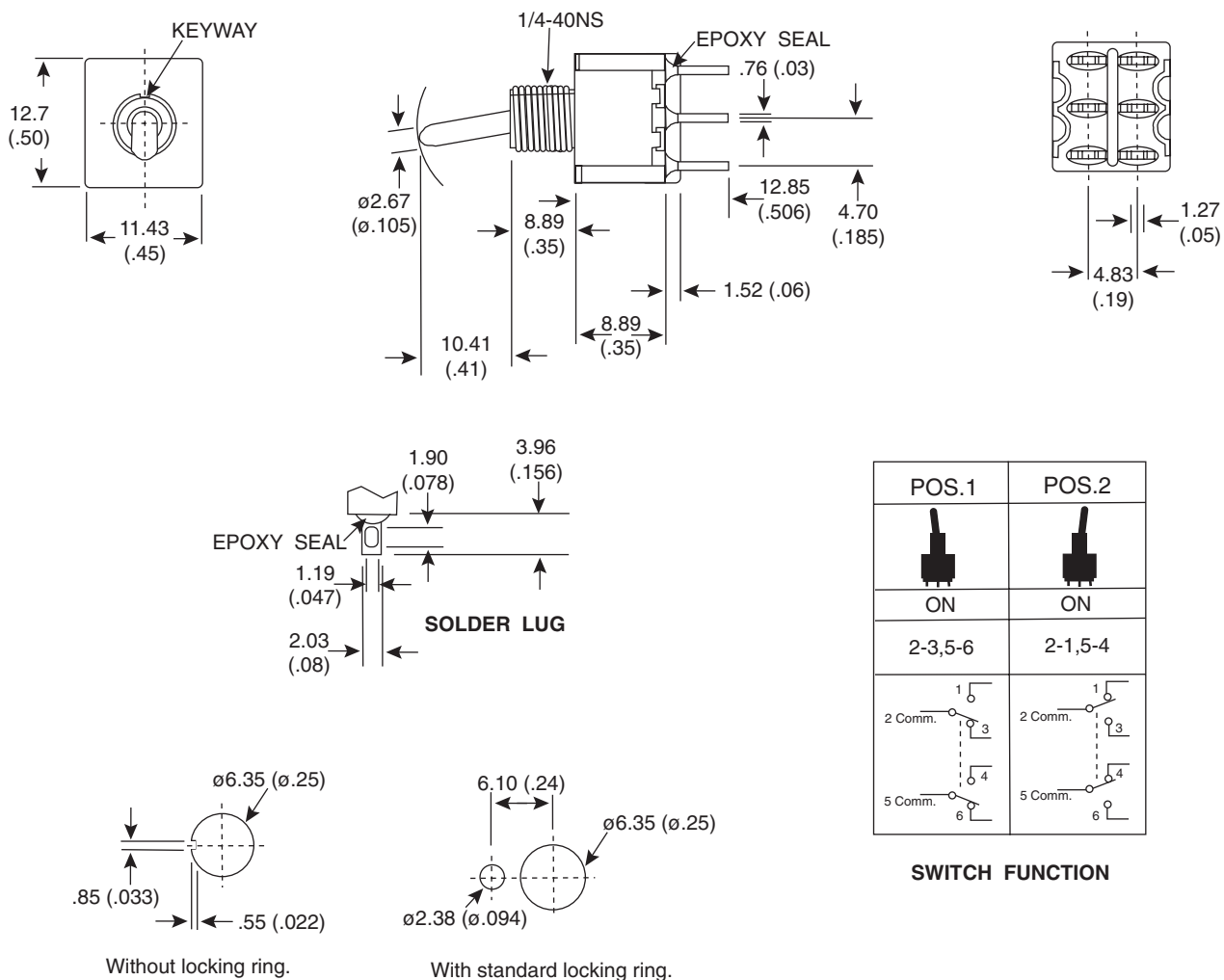


DIMENSIONS: mm (in.)**PANEL MOUNTING****Electrical Specifications:**

- Electrical Life: 40,000 make-and-break cycles at full load
- Contact Resistance: 10mΩ max. initial @ 2-4VDC 100mA
- Insulation Resistance: 1,000MΩ min.
- Dielectric Strength: 1,000 V RMS@ sea level
- Rating: 2A/250VAC; 5A/120VAC or 28VDC

Mechanical Specifications:

- Operating Temperature: -30°C to +85°C

Note:

- RoHS compliant by exemption

Materials:

- Case: Diallyl phthalate (DAP)
- Acuator: Brass, chrome plated
- Bushing: Brass, nickel plated
- Housing: Stainless steel
- Terminal/Contact: Silver or Gold plated

Toggle Switch
108-1MD1T1B1M1QE-EVX

Mountain
Switch

Mouser Electronics

Authorized Distributor

Click to View Pricing, Inventory, Delivery & Lifecycle Information:

Mountain Switch:

[108-1MD1T1B1M1QE-EVX](#)