



Interchangeable Cross Optic

60° Fan Angle

1. Product Overview.

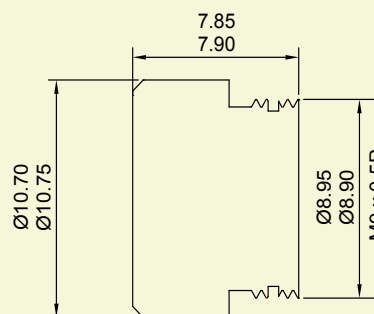
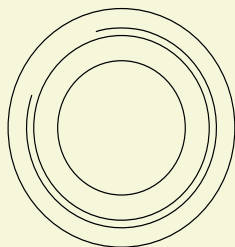
The Interchangeable line lens consists of a moulded acrylic multi rod lens element fitted with in an 11mm diameter lens holder with an M9 thread section for mounting. The lens produces a cross with typical full fan angle of 60 degree with a 5mm by 1.5 mm input beam. The intensity distribution is gaussian in the width and homogeneous in the line. The homogeneous line produces a high uniformity line at shorter working distances, however due to the effects of divergence the uniformity levels will decrease over longer working distance. An M9 threaded section allows the lens assembly to simply screw into any laser module with a M9 thread for lens assembly and a suitable focal length collimator.

2. Specification.

Lens Material	Acrylic
Lens Type	Moulded Multi Rod
Exit Aperture	5mm
A/R Coated	No
Typical Input Beam Size	5 by 1.5mm
Typical Fan Angle	60°
Trpical Transmission Loss (650nm)	≤25%

3. Diagram.

Interchangeable Line + Dot Lens (100° Fan Angle)



9090-02-040 Rev 1



Please Note: Global Laser reserve the right to change descriptions and specifications without notice.

T: +44 (0)1495 212213
F: +44 (0)1495 214004
E: sales@globallasertech.com
www.globallasertech.com

Global Laser Ltd, Cwmillery Industrial Estate
Abertillery, Gwent NP13 1LZ UK