



Audible Signals  
**EXPLOSION PROOF**  
**GRP SOUNDER/BEACON**

Explosion Proof Sounder/Beacon > GRP  
**SB150-1 Series**

Product overview

The SB150-1 electronic combined sounder beacon range has been approved for use in potentially explosive atmospheres and very harsh environmental conditions.

Typical applications are Oil and Gas, On-shore and Offshore, Chemical, Petrochemical, Refineries & Marine locations etc.

The unit incorporates a four stage alarm option with sixty three tones to choose from which includes four tones that can be recorded or customised by the installer.

All tones can be pre-set during installation. In addition, the unit also incorporates a visual warning signal with a choice of two types of light source: either xenon (strobe) with multiple flash rates and power ratings or an LED array with three status type indication options.

The units also have the ability to be fitted with a telephone initiation function and can be used as the second ring output indicator for telephones when installed in very noisy environments.

The design allows for termination inside the enclosure. The unit can be bracket mounted only.

Features/Certifications

- Approved by ATEX and CQST
  - IMETRO and IECEx (Pending)
- ATEX: II 2G Exd IIC T4 - T6 (incorporating IIA & IIB)
- Zones 1&2, Zones 21&22 (Pending)
- Conforms to EN (IEC) 60079-0 EN (IEC) 60079-1 and EN54
- 360° light output around the vertical axis
- Volume control
- Dustproof & Weatherproof

**SB150-1 Series > Ordering Information**

Standard Product Selection		Lens Colour	Beacon Type	Power (Xenon)*	Power (LED)*	Voltage	Duty Label	Tag Label**	Lens Guard**	Cable Entry	Finish Colour	Telephone Initiated	
SB150-1	+	R = Red	X = Xenon	02 = 2J	05 = 5W	DC 12 ~ 48v	Y = Yes	Y = Yes	Y = Yes	A = M20	RD = Red	Y = Yes	
		Y = Amber		05 = 5J						B = M25	YW = Yellow		
		B = Blue		10 = 10J		AC1 12 ~ 48v				C = 1/2 NPT	BU = Blue		
		G = Green	L = LED	15 = 15J	10 = 10W	AC2 100-240v		N = No	N = No	D = 3/4 NPT	BL = Black	N = No	
		C = Clear		21 = 21J						O = Other	OR = Other		

Follow the chart (right) to generate your part code

Follow the chart (right) to generate your part code.

\*\* These accessories need to be ordered separately.

**MODEL CONFIGURATOR** (By using the table above, complete this box sequence to select your required sounder beacon).

SB150-1						Y					
Lens Colour	Beacon Type	Power (Xenon)*	Power (LED)*	Voltage	Duty Label	Tag Label**	Lens Guard	Cable Entry	Finish Colour	Telephone Initiated	

\* Choose either Xenon power or LED power only    \*\* These accessories need to be ordered separately.

Note: All customers orders will be confirmed in writing. Care should be taken that the correct code has been ordered as be-spoke manufactured products cannot be returned for exchange or credit later.

**Kg** 6.5

**°C** -40+70

**IP** 66/67

**dB** 115

**MARINE**

**INDUSTRIAL**

APPROVALS and CONFORMITIES



**GRP**

# Explosion Proof Sounder/Beacon > GRP SB150-1 Series

49

## General Information

EX CODE: Exd IIC T4 - T6

CERTIFICATION: ATEX, CQST

TYPE: Xenon or LED Audible and Visual Signal Warning Device

SOUNDER: 4 Stage alarm with 63 Selectable tones

POWER RATING: 5-20 Watts Adjustable

SOUND OUTPUT: Up to 115 dB at 1 metre

Xenon Working Status		Xenon - Flashing			
Flash Rate		Selectable from 60-180 Flashes per Minute			
Power Rating	2.5 J (4W) Max	5 J (10W) Max	10 J (15W) Max	15 J (20W) Max	21 J (25W) Max
Effective Candela	67	109	293	395	424

LED Working Status	LED - Flashing / Rotating / Static
Flash Rate	Selectable from 60-120 Flashes per Minute
Rotation Rate	Selectable from 60-120 Revolutions per Minute
Static Mode	Permanently ON (ie Steady)
Power Rating	5 W
Effective Candela	128

### MULTIPLYING FACTOR FOR COLOURED LENSES:

Yellow (Amber) x 0.51, Red x 0.15, Blue x 0.12, Green x 0.49, Clear x 0

## Mechanical Specifications

MATERIAL: Enclosure: GRP (Glass Reinforced Plastic)  
Bracket: Stainless Steel 316 Lens: Tempered Glass

LENS COLOURS: Yellow (Amber), Red, Blue, Green, Clear or Other (specify)

ENCLOSURE COLOUR: Red (RAL3001), Yellow (RAL1003)  
Blue (RAL5005), Black (RAL9004)

AMBIENT TEMPERATURE: -40 to +70

HUMIDITY: ≤ 95% RH

WEIGHT: 6.5 Kg / 14.3 lb

DIMENSIONS: Length: 413mm / 16.4" No Lens Guard Fitted  
See outline drawing for other dimensions

INGRESS PROTECTION: IP 66 & 67

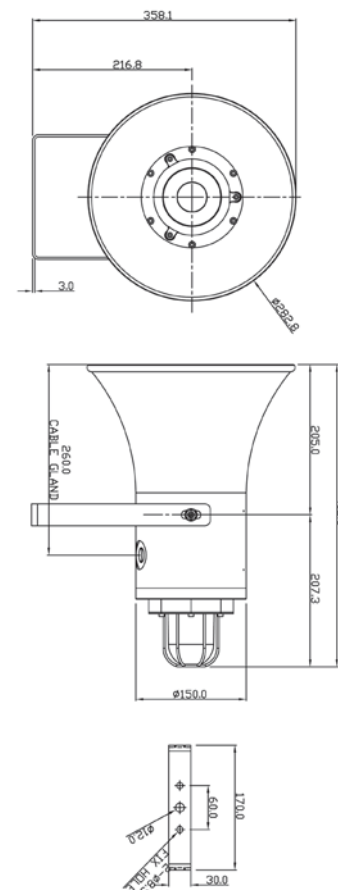
## Electrical Specifications

POWER SUPPLY: 12-48v Dc, 12-48v Ac or 100-240v Ac

TERMINATION: Accepts upto ≤ 2.5mm<sup>2</sup> incorporating rising clamp protectors

CABLE ENTRY: 4 x M20, M25, 1/2"NPT, 3/4"NPT or Other (Specify)

CURRENT CONSUMPTION: Sounder 250 mA - 1500 mA (Adjustable by tone selection)



## Spareparts & Accessories

Tag Label (Specified)	05/50070110229
Telephone Initiated PCB	05/50110105201
Lens Guard	05/50060110109
M20 x 1.5 Blind Plug *	05/55100110920
M25 x 1.5 Blind Plug *	05/55100110925
1/2" NPT Blind Plug *	05/55100110821
3/4" NPT Blind Plug *	05/55100110843
M20 Stainless Steel Exd Blind Plug	05/55100110920

\* Ex Stainless Steel Blind Plug (Selectable or Specify)

## SB150-1 Series > Power Consumption & Working Current

Power Consumption: Sounder: 5-20W & LED: 5W

Working Current: Sounder: 250 mA - 1500 mA & LED: 220 mA (Max)

Xenon	2.5 Joule	5 Joule	10 Joule	15 Joule	21 Joule
	4 W (Max)	10 W (Max)	15 W (Max)	20 W (Max)	25 W (Max)

Xenon	2.5 Joule	5 Joule	10 Joule	15 Joule	21 Joule
	160 mA	320 mA	650 mA	1A (Max)	1.4A (Max)