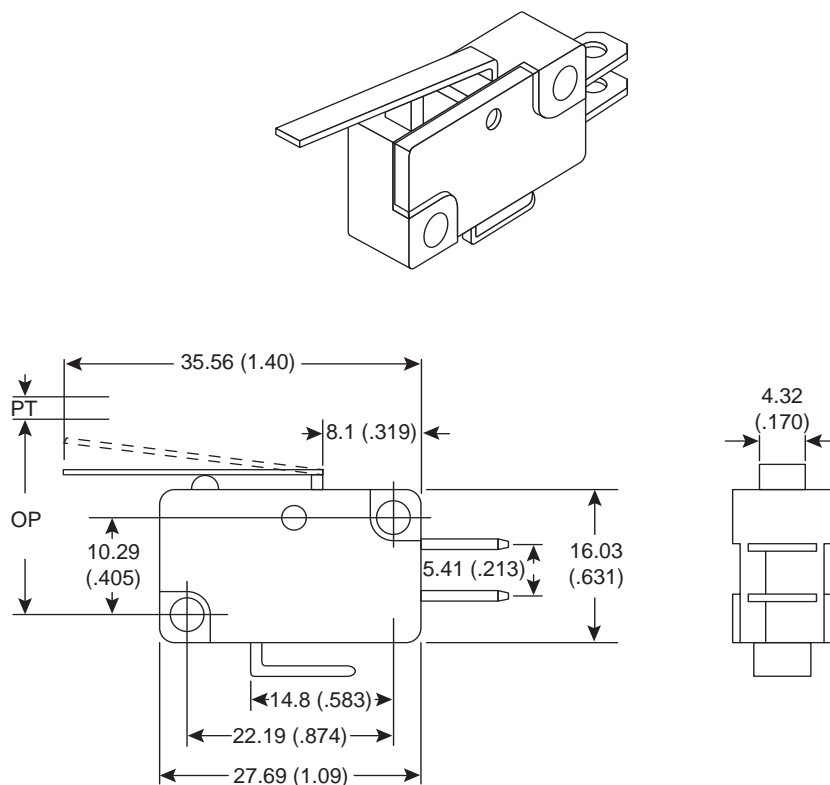


Dimensions: mm (In.)

**Electrical Specifications:**

- Rating: 10A / 125VAC, 6A / 250VAC

Mechanical Specifications:

- Type: SPDT
- Operating position: .600±.050
- Pretravel: .120 (max.)
- Operating force: 170gf

Miniature Snap Switch
101-1002

Mountain
Switch

Mouser Electronics

Authorized Distributor

Click to View Pricing, Inventory, Delivery & Lifecycle Information:

[Mountain Switch:](#)

[101-1002](#)