



# AkroBins®

## INDUSTRY-LEADING HANGING & STACKING BINS

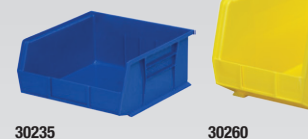
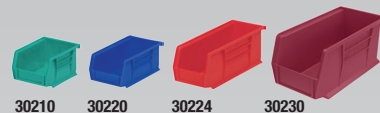


### FEATURES

- 1 Anti-slide stop prevents stacked bins from shifting forward
- 2 Optional dividers allow you to create customizable compartment sizes
- 3 Full-width hanger lip supports bin on hanging system
- 4 Curved-bottom hopper front makes it easy to retrieve small parts
- 5 Reinforced side ribs add strength and prevent spreading when stacked
- 6 Large front label area for easy coding and scanning
- 7 Extra-wide stacking ledge provides stability, saves space and prevents spills

### PRODUCT HIGHLIGHTS

- **EFFICIENT** – Control inventories, shorten assembly times, minimize parts handling
- **FUNCTIONAL** – Heavy-duty bins securely stack atop each other, sit on shelving, and hang from Akro-Mils racks, panels, rails and carts
- **DURABLE** – Molded of industrial-grade polymers, AkroBins are resistant to weak acids and alkalis. Water, rust and corrosion-proof
- **VARIETY** – Available in 14 sizes and 7 Standard Colors: Red, Blue, Yellow, Stone, Green, Black and Clear! 4 Specialty Colors: Berry, Light Blue, Purple, Teal available in 9 sizes
- **GUARANTEED** – AkroBins are guaranteed not to crack or break under normal load conditions as stated in our 1-year limited warranty



### STANDARD COLORS

Red, Yellow, Blue, Stone, Green, Clear, Black



### SPECIALTY COLORS

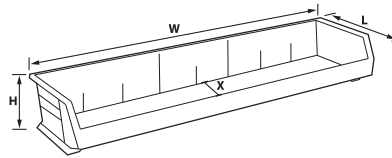
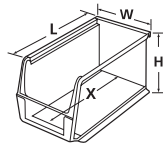
Berry, Light Blue, Purple, Teal



Also available in recycled Hunter Green, Sandstone and Terra Cotta. See Pg. 8.



800.253.2467  
akro-mils.com

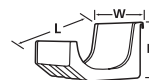


AkroBins Model No.	Outside Dimensions (In.)			Bottom Dimensions (In.)				Capacity/Quantity		Accessories							
	L	W	H	L	W	H	X	Bin Load Capacity On Rack	Bin Ctn. Qty.	Length Dividers**	Width Dividers**	Divider Pkg. Qty.	Bin Lids***	Lid Pkg. Qty.	Adhesive Labels	Card Stock	Slope-It Bin Inserts
30210*	5½	4¼	3	4¾	3¾	2¾	4	10 lbs.	24	40210 (1)	–	6	30211CRY	24	29202	29301	–
30220*	7¾	4¼	3	6¾	3¾	2¾	6	10 lbs.	24	40220 (1)	–	6	30221CRY	24	29202	29301	–
30224*	10½	4¼	4	10¼	3¾	3¾	9	30 lbs.	12	40224 (1)	–	–	30225CRY	12	29202	29301	46224
30230*	10½	5½	5	10¼	4¾	4¾	9	30 lbs.	12	40230 (1)	41230 (3)	6	30231CRY	12	29203	29302	46230
30234*	14¾	5½	5	14¼	4¾	4¾	12¾	50 lbs.	12	40234 (1)	–	–	–	–	29203	29302	–
30239*	10¾	8¼	7	10	6¾	6¾	8	50 lbs.	6	40239 (1)	–	6	–	–	29203	29302	–
30240*	14¾	8¼	7	14	6¾	6¾	12	60 lbs.	12	40245 (1)	–	6	–	–	29203	29302	46240
30265	18	8¼	9	17¾	6¾	8¼	14½	60 lbs.	6	40265 (1)	–	6	–	–	29203	29303	–
30235*	10½	11	5	10¼	10	4¾	9	50 lbs.	6	40230 (3)	–	6	30236CRY	6	29203	29302	–
30260	18	11	10	17	9½	9¾	14¾	60 lbs.	6	40260 (3)	–	6	–	–	29203	29303	–
30255	10½	16½	5	9¾	15	4¾	9	60 lbs.	6	40230 (3)	–	6	–	–	29203	29302	–
30250*	14¾	16½	7	14	14¾	6¾	12	75 lbs.	6	40245 (3)	–	6	–	–	29203	29302	–
30270	18	16½	11	17¾	14¾	10¼	14	75 lbs.	3	40270 (3)	–	6	–	–	29203	29303	–
30320	8½	33	5	7	31½	4¾	6	80 lbs.	4	40321 & 40220 (7)	–	7	30321	4	–	–	–

One color per carton: Specify Red, Blue, Yellow, Stone, Clear, Green or Black. Order in carton quantities. CAUTION: When using bins with hanging systems, do not exceed the weight capacity for the rack, which may be less than the total sum of bin capacities. 40321=Long Divider; 40220=Short Divider. \*Available in Specialty Colors: Berry, Purple, Teal and Light Blue. \*\*() = Max. # of dividers per bin. \*\*\*Assembly required – 30211CRY replaces 30211; 30221CRY replaces 30221; 30231CRY replaces 30231; 30236CRY replaces 30236.



30330RED	7¾	8¼	5	–	–	–	–	75 lbs.	6
40330	6¾	¼	4¼	–	–	–	–	75 lbs.	6
403302PK	6¾	¼	4¼	–	–	–	–	75 lbs.	2



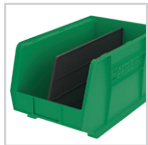
## ACCESSORIES



**See Through Crystal Clear Lids**  
Keep contents dust-free and protected



**Adhesive Labels & Card Stock Holders**  
Clearly identify bin contents.  
See Pg. 11



**Length Dividers**  
Keep items separated in bin. Now available for all sizes!



**Slope-It™ Bin Inserts**  
15° slope inserts for 30224, 30230 and 30240 AkroBins improve visibility and accessibility of supplies by keeping them close to the front of the bin. Transform your AkroBins in one easy step!

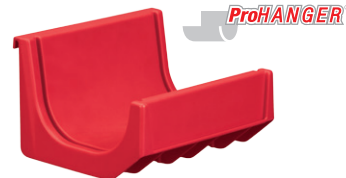


**Width Dividers**  
Available for 30230



**Bin Retainer Clip**  
**Model No. 40599**  
Hold bins securely on louvered panels. Will work with any size AkroBin or ProHANGER. Perfect for service vans and maintenance workers, plumbers, electricians or other tradesmen who store and transport supplies and material

## ProHANGER®



**Model No. 30330RED**  
Can be placed side-by-side on walls, rail rack or panel systems to store extra-long parts or supplies

- Unique J-Hook design cradles various shapes and sizes of contents
- Available End Cap inserts (sold separately) keep items from sliding out
- Each ProHANGER is capable of supporting up to 75 lbs.

**RELATED PRODUCTS**  
Create the perfect storage system – mix and match your selection of AkroBins with compatible products





# Super-Size AkroBins®

INDUSTRY-LEADING LARGE-CAPACITY STACKING BINS



## FEATURES

- 1 Anti-slide stop prevents stacked bins from shifting forward
- 2 Easy to carry with large handle molded onto back of bin
- 3 Reinforced side ribs add strength and prevent spreading when stacked
- 4 Large label area on front of bin
- 5 Divider slots help create separate compartments

## PRODUCT HIGHLIGHTS

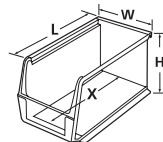
- **CAPACITY** – Large-capacity storage to improve organization and workflow
- **STACKABLE** – Heavy-duty bins securely stack atop each other, sit on shelving, carts or dollies
- **DURABLE** – Molded of industrial-grade polymers, Super-Size AkroBins are resistant to weak acids and alkalis. Water, rust and corrosion-proof
- **VARIETY** – Available in 12 sizes and 4 colors: Red, Blue, Yellow, Clear
- **GUARANTEED** – Super-Size AkroBins are guaranteed not to crack or break under normal load conditions as stated in our 1-year limited warranty



## COLORS

Red, Yellow, Blue, Clear



800.253.2467  
akro-mils.com

Super-Size AkroBins	Outside Dimensions (In.)			Inside Dimensions (In.)				Capacity/Quantity			Accessories						
Model No.	L	W	H	L	W	H	X	Max. Cap. per Bin	Stacking Cap./= Qty. Stacked	Ctn. Qty.	Width Dividers*	Length Dividers*	Divider Pkg. Qty. W L	Windows	Window Pkg. Qty.	Card Stock Holder	
30280	20	12¾	6	16⅞	10⅛	5⅝	15½	200 lbs.	40 lb./10	4	—	40280 (3)	—	2	21280	2	29304
30281	20	12¾	8	16⅞	10⅛	7⅝	15½	200 lbs.	50 lb./7	3	—	40281 (3)	—	3	21281	3	29304
30282	20	12¾	12	16⅞	10⅛	11⅝	15½	200 lbs.	60 lb./5	2	—	40282 (3)	—	1	21282	2	29304
30283	20	18¾	12	16⅞	16⅞	11⅝	15½	300 lbs.	150 lb./5	1	—	40282 (3)	—	1	21283	1	29304
30284	23⅞	8¼	7	20⅞	6⅝	6⅝	19⅞	200 lbs.	150 lb./5	4	41284 (2)	40286 (1)	2	4	21284	4	29304
30286	23⅞	11	7	20⅞	9⅝	6⅝	19⅞	200 lbs.	150 lb./5	4	41286 (2)	40286 (3)	2	4	21286	4	29304
30287	23⅞	11	10	20¾	9	9⅝	19⅞	300 lbs.	150 lb./5	4	41287 (2)	40287 (3)	6	6	21287	4	29304
30288	23⅞	16½	11	20¾	14⅝	10⅝	19⅞	300 lbs.	150 lb./5	1	41288 (2)	40287 (3)	6	6	21288	1	29304
30289	23⅞	18¼	12	20¾	16	11⅝	19¾	300 lbs.	150 lb./5	1	41289 (2)	40289 (3)	2	1	21289	1	29304
30290	29¼	18¾	12	26⅞	16⅞	11⅝	24¾	300 lbs.	150 lb./5	1	—	40290 (3)	—	1	21283	1	29304
30292	29⅞	11	10	26¾	9	9⅝	25⅝	300 lbs.	150 lb./5	4	41287 (2)	40292 (3)	6	6	21287	4	29304
30293	29⅞	16½	11	26¾	14⅝	10⅝	25⅝	300 lbs.	150 lb./5	1	41288 (2)	40292 (3)	6	6	21288	1	29304

One color per carton: Specify Red, Blue, Yellow or Clear. Not recommended to hang on rack or panel systems. Order in carton quantities. \* ( ) = Max. # of divider slots per bin.

## ACCESSORIES



**Window Insert**  
Optimizes interior space and keeps contents visible



**Width Dividers**  
Available for 7 bin models



**Length Dividers**  
Available for all sizes



**Adhesive Labels & Card Stock Holders**  
Card Stock Holders fit in bins' existing slot; adhesive labels also available. See Pg. 11

## SUPER-SIZE AKROBIN® CARTS



Easy organization of bulky parts in 4, 6, 9, 12 and 16-bin configurations

- Carts hold a variety of Super-Size AkroBins (sold separately)
- Heavy-duty frames with capacity from 900 to 1,500 lbs. (See Pg. 61)

**RELATED PRODUCTS**  
Increase the benefits of your Super-Size AkroBins with the following products



**46-48** Wire Shelving Systems



**49-51** Steel Shelving Systems



**61** Super-Size Bin Carts



**67** Dollies



# Specialty AkroBins®

EARTHSAVER AKROBINS: 1800 SERIES AKROBINS : ESD CONTAINERS

## EarthSaver® Series: AkroBins®

AKROBINS MADE OF RECYCLED MATERIAL

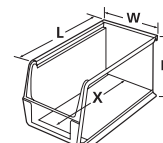


MADE IN THE USA

- **RECYCLED** – EarthSaver AkroBins made of 100% recycled material. Make a positive impact on the environment!
- **GUARANTEED** – EarthSaver AkroBins are guaranteed not to crack or break under normal load conditions as stated in our 1-year limited warranty
- **VARIETY** – Available in 7 sizes and 3 colors: Hunter Green, Sandstone and Terra Cotta
- **ACCESSORIES** – Crystal Clear Lids, Length Dividers and Width Dividers available (see Pg. 5)

### COLORS

Hunter Green, Sandstone, Terra Cotta



EarthSaver AkroBins	Outside Dimensions (In.)			Inside Dimensions (In.)				Capacity/Quantity	
	Model No.	L	W	H	L	W	H	X	Bin Load Capacity On Rack
	30210RECY	5½	4½	3	4¾	3¾	2¾	4	10 lbs.
	30220RECY	7¾	4½	3	6¾	3¾	2¾	6	10 lbs.
	30230RECY	10½	5½	5	10¼	4¾	4¾	9	30 lbs.
	30234RECY	14¾	5½	5	14½	4¾	4¾	12¾	50 lbs.
	30239RECY	10¾	8¼	7	10	6¾	6¾	8	50 lbs.
	30240RECY	14¾	8¼	7	14	6¾	6¾	12	60 lbs.
	30250RECY	14¾	16½	7	14	14¾	6¾	12	75 lbs.

One color per carton: SS = Sandstone, TC = Terra Cotta and HG = Hunter Green. Order in carton quantities. CAUTION: When using bins with hanging systems, do not exceed the weight capacity for the rack, which may be less than the total sum of bin capacities.

## 1800 Series AkroBins®

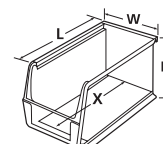
STACKABLE SHELF BINS



MADE IN THE USA

### COLOR

Beige



1800 Series	Outside Dimensions (In.)			Inside Dimensions (In.)							
Model No.	L	W	H	L	W	H	X	Ctn. Qty.	Dividers	Pkg. Qty.	Capacity (Lbs.)
30348BEIGE	20½	8¼	7	20	7¾	6½	20	6	40348 (3)	6	60
30358BEIGE	20½	11	7	20	10½	6½	20	6	40358 (3)	6	75

Available in Beige. Order in carton quantities.

- **DURABLE** – Strong industrial-grade polymer construction
- **STACKING** – Stackable storage systems for large, heavy or bulky items
- **DIVIDABLE** – One black width divider included per bin

## ESD Containers

AKROBINS MADE WITH ELECTROSTATIC DISSIPATIVE MATERIALS

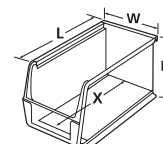


MADE IN THE USA

- **PROTECTION** – Dissipate electrostatic charges, which can severely damage sensitive electronic components
- **OHM RATING** – Static Dissipative Range 106 to 109 ohms/sq.
- **LOW CARBON** – 1% - 2% carbon content

### COLOR

Black



ESD Containers	Inside Dimensions (In.)			Outside Dimensions (In.)					
Model No.	L	W	H	L	W	H	X	Cap. on Rack	Ctn. Qty.
30210ESD	5½	4½	3	4¾	3¾	2¾	4	10 lbs.	24
30220ESD	7¾	4½	3	6¾	3¾	2¾	6	10 lbs.	24
30230ESD	10½	5½	5	10¼	4¾	4¾	9	30 lbs.	12
30235ESD	10½	11	5	10¼	10	4¾	9	50 lbs.	6
30240ESD	14¾	8¼	7	14	6¾	6¾	12	60 lbs.	12

Available in Black. Order in carton quantities.

# InSight®

## ULTRA-CLEAR POLYCARBONATE BINS

800.253.2467  
akro-mils.com



MADE  
IN THE  
USA

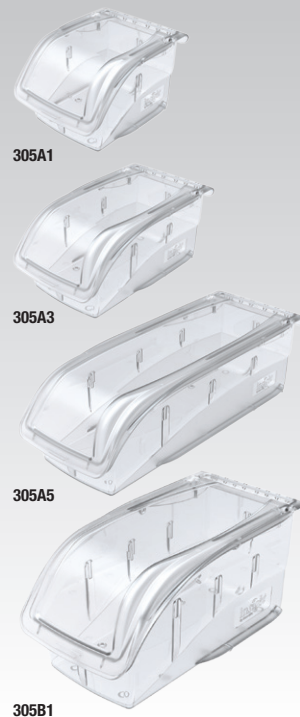


### FEATURES

- 1 Unique "lock-in-place" design for secure stacking
- 2 Strong molded hanger supports bins on hanging systems
- 3 Large label area for part identification and bar code scanning
- 4 Optional lids (sold separately) protect contents from dust. Will stack with lids in place!
- 5 Clear length and width dividers available (sold separately)

### PRODUCT HIGHLIGHTS

- **VISIBILITY** – Bins provide easy and maximum visibility of parts and supplies
- **FUNCTIONAL** – Bins securely stack, and hang from louvered panels, rails and the ReadySpace® Storage System
- **NO-TIP FEATURE** – Patent-pending design: Bins won't tip when stacked!
- **DURABLE** – Products made of high-impact polycarbonate are autoclavable up to 350° F
- **VARIETY** – Available in 4 sizes



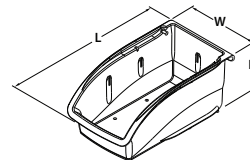
**COLOR**  
Clear



*insight*  
by Akro-Mils

InSight	Outside Dimensions (In.)			Inside Dimensions (In.)			Capacity/Quantity		Accessories					
Model No.	L	W	H	L	W	H	Capacity (lbs.)	Bin Ctn. Qty.	Width Divider	Divider Pkg Qty.	Length Divider	Divider Pkg Qty.	Lid	Lid Pkg Qty.
305A1	5%	4%	3%	4%	3%	2%	10	16	415A1 (1)	8	405A1 (1)	8	305A2	16
305A3	7%	4%	3%	6%	3%	2%	10	16	415A1 (2)	8	405A3 (1)	8	305A4	16
305A5	10%	4%	3%	9%	3%	2%	15	12	415A1 (3)	8	405A5 (1)	6	305A6	12
305B1	10%	5½	5%	9¾	4%	4¾	25	12	415B1 (3)	6	405B1 (1)	6	305B2	12

# in ( ) represents divider slots per bin.



### ACCESSORIES



**Lids**  
Protect bin contents from dust



**Dividers**  
Expand sorting options with length dividers

**RELATED PRODUCTS**  
Create the perfect storage solution — mix and match your InSight Bins with these products



**28-30** Louvered Hanging Systems



**31** ReadySpace Storage Systems



**32** Rail Hanging Systems

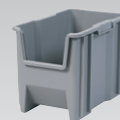


# Stak-N-Store Bins

STACKABLE BINS PERFECT FOR HEAVY, BULKY ITEMS



MADE IN THE USA



13014



13017



13018

## COLORS

Red, Blue, White, Clear, Gray



## FEATURES

- 1 Large radius corners and rolled rim add strength
- 2 Side ribs add stability when stacked
- 3 Wide hopper front allows easy access to bulky items
- 4 Large comfort grip handles

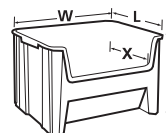
## PRODUCT HIGHLIGHTS

- **STACKBLE** – Bins stack to form tall, stable storage arrangements on floors or standard industrial shelving
- **CAPACITY** – 75-lb. weight capacity
- **DURABLE** – Durable, industrial-grade polymer will not rust, corrode or bend out of shape even when fully loaded
- **COST-EFFECTIVE** – Longer service life resulting in lower replacement costs
- **VARIETY** – Available in 3 sizes and 5 colors: Red, Blue, Gray, White, Clear



Stak-N-Store Bins	Outside Dimensions (In.)			Inside Dimensions (In.)				Capacity/Quantity				
Model No.	L	W	H	L	W	H	X	Cu. Ft.	Gal	Lbs.	Stacking Height	Ctn. Qty.
13014	17½	10½	12½	15½	8	12¼	13½	.98	7.4	75	3	4
13017*	15¼	19¾	12¾	13¾	17½	12¼	11½	1.7	12.7	75	3	3
13018	17½	16½	12½	15½	13¾	12¼	13½	1.6	12	75	3	2

One color per carton. Specify Red, Blue, Gray or Clear. \*13017 also available in White. Order in carton quantities.



## RELATED PRODUCTS

Add mobility to your Stak-N-Store Bins with



46-48 Wire Shelving Systems



49-51 Steel Shelving Systems



67 Dollies



# Adhesive Labels & Card Holders

2 NEW LABELING OPTIONS FOR AKRO-MILS  
BINS, TOTES, CONTAINERS

800.253.2467  
akro-mils.com

STORAGE BINS –  
HANGING & STACKING



A69452MR

## PRODUCT HIGHLIGHTS

- **FUNCTIONAL** – Can be used on a variety of Akro-Mils bins, totes and containers
- **EFFICIENT** – Perfect for 5S Lean and other productivity initiatives
- **VARIETY** – Card Stock Holders, Adhesive Labels, Adhesive Backed Card Holders available

### Card Stock Holders

- Clear Plastic Card Holder models 29300, 29301, 29302 and 29303 fit in bin's existing card holder slot
- 29304 Card Stock Holder has adhesive back to work with bins and containers without card slots
- Card stock labels identify contents of bin

### Adhesive Labels

- Designed to fit inside card slot areas on Akro-Mils AkroBins®, ShelfMax® Bins and Shelf Bins
- Acrylic adhesive backing forms permanent bond with bins
- Can be used on a wide range of Akro-Mils bins, totes and containers, including AkroDrawers®, Super-Size AkroBins® and Stak-N-Store

### Adhesive Backed Card Holder

- Model 29304 features an adhesive back to work with bins that do not have card holder slots, such as Super-Size AkroBins, 33" Wide AkroBins, Akro-Tubs, NST's, ALC's, SWC's and Stak-N-Store Bins
- 2 $\frac{3}{8}$ " x 3 $\frac{7}{8}$ " surface area required

Adhesive Labels	Dimensions (In.)		Works With:	Labels Per Sheet	Pkg. Qty.	Total Labels
Model No.	W	H				
29200	1 $\frac{1}{2}$	$\frac{3}{4}$	30110*	36	10 Sheets	360
29201	2 $\frac{1}{2}$	$\frac{3}{4}$	30120, 30130, 30150, 30170, 30128, 30138, 30158, 30178, 30124, 30164, 30184, 30174*	24	10 Sheets	240
29202	2 $\frac{1}{2}$	7 $\frac{1}{2}$	30210, 30220, 30224, All ShelfMax Bins*	20	10 Sheets	200
29203	3 $\frac{1}{2}$	1 $\frac{1}{2}$	30230, 30234, 30235, 30239, 30240, 30250, 30255, 30260, 30265, 30270*	12	10 Sheets	120

The labels were designed to fit inside our card slot area and have an acrylic adhesive backing. The approximate time for permanent bond is 48 – 72 hours. \*Works with multiple sizes of Super-Size AkroBins, Attached Lid Containers, Nest & Stack Totes, Straight Wall Containers, AkroDrawers or Stak-N-Store Bins.

Card Stock Holder	Dimensions (In.)		Works With:	Cards Per Sheet	Sheets Per Pack	Total Cards Per Pack	Total # of Clear Holders
Model No.	W	H					
29300	3	1 $\frac{3}{8}$	All 4" Shelf Bins**	24	3	72	25
29301	3	1	30210, 30220, 30224, All ShelfMax Bins	20	3	60	25
29302	4	1 $\frac{3}{4}$	30230, 30234, 30235, 30239, 30240, 30250, 30255, 30348, 30358	12	3	36	25
29303	4	2	30260, 30265, 30270, 33223	12	3	36	25
29304*	3 $\frac{1}{2}$	2	All Super-Size Akro-Bins, and items without Card Slots – adhesive strip on back	10	3	30	25

The clear holders for the 29300 - 29303 fit in our card slot holder. \*The 29304 has an adhesive back and will work with multiple sizes of products that do not have a card slot holder such as Super-Size AkroBins, 33" Wide AkroBins, Attached Lid Containers, Nest & Stack Totes, Straight Wall Containers or Stak-N-Store Bins. \*\*Excluding 30110 (29300 can be cut to length) 11%.



30230 with 20203



30240 with 20303



30292 with 29304

## 10° EXTENDED LABEL HOLDER



### Model No. 40410

Designed for larger bar code scanning.  
Works with Shelf Bins & ShelfMax

10° Extended Label Holder	Outside Dimensions (In.)			Ctn. Qty.
Model No.	L	W	H	
40410	–	4	2 $\frac{1}{4}$	24

## RELATED PRODUCTS

Adhesive Labels and Card Holders work with



4-5 AkroBins



6-7 Super-Size AkroBins



12 Shelf Bins



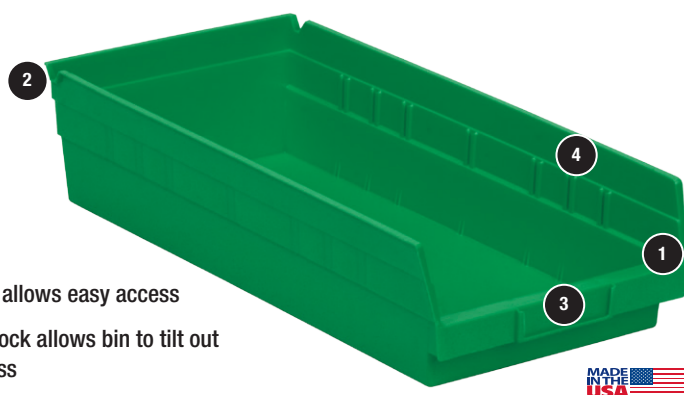
13 ShelfMax





# Shelf Bins

INDUSTRY-LEADING 4" HIGH SHELF BINS ARE DURABLE, EFFICIENT

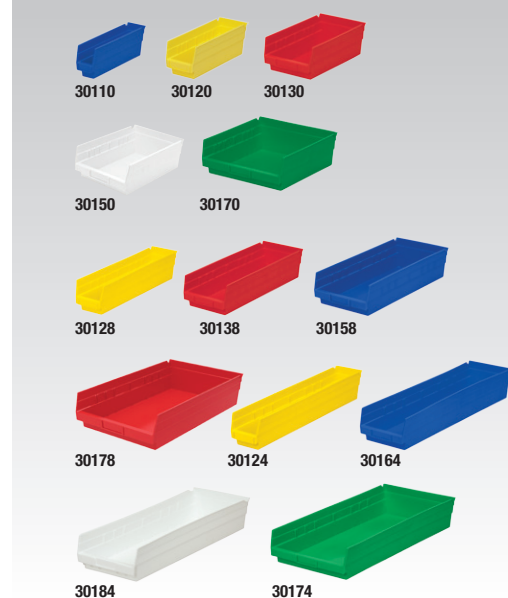


## FEATURES

- 1 Wide hopper front allows easy access
- 2 Built-in rear hanglock allows bin to tilt out for complete access
- 3 Molded-in label area identifies contents
- 4 Each bin accepts up to 7 dividers (except 30110)

## PRODUCT HIGHLIGHTS

- **EFFICIENT** – Shelf Bins work with 12", 18" and 24" deep shelving, pick racks or vertical storage and retrieval units
- **DURABLE** – Industrial-grade polymer bins outlast corrugated bins — paying for themselves in reduced replacement costs. Bins won't spread or crack when loaded. One-piece construction is waterproof and resistant to grease or oil
- **NESTABLE** – Shelf Bins nest when empty to conserve space
- **VARIETY** – Available in 13 sizes and 6 colors: Red, Blue, Yellow, Green, White and Clear



## COLORS

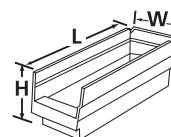
Red, Yellow, Blue, Green, White, Clear



Also available in recycled Hunter Green, Sandstone and Terra Cotta. See Pg. 14.

Shelf Bins	Outside Dimensions (In.)			Inside Dimensions (In.)			Capacity/Quantity		Cups per Bin		Accessories			
Model No.	L	W	H	L	W	H	Bin Load Capacity	Ctn. Qty.	Small 30101	Large 30102	Width Dividers*	Divider Pkg. Qty.	Labels	Card Stock
30110	11"	2 3/4"	4"	10 1/4"	1 1/2"	4"	7 lbs.	24	3	—	—	—	29200	29300**
30120	11"	4"	4"	10 1/4"	3"	4"	10 lbs.	24	5	2	40120 (7)	24	29201	29300
30130	11"	6"	4"	10 1/4"	5 1/2"	4"	15 lbs.	12	9	4	40130 (7)	24	29201	29300
30150	11"	8"	4"	10 1/4"	7"	4"	15 lbs.	12	11	4	40150 (7)	24	29201	29300
30170	11"	11"	4"	10 1/4"	10"	4"	20 lbs.	12	15	6	40170 (7)	24	29201	29300
30128	17"	4"	4"	16 1/2"	3"	4"	15 lbs.	12	8	3	40120 (7)	24	29201	29300
30138	17"	6"	4"	16 1/2"	5 1/2"	4"	20 lbs.	12	15	6	40130 (7)	24	29201	29300
30158	17"	8"	4"	16 1/2"	7"	4"	20 lbs.	12	15	6	40150 (7)	24	29201	29300
30178	17"	11"	4"	16 1/2"	10"	4"	20 lbs.	12	25	12	40170 (7)	24	29201	29300
30124	23"	4"	4"	22 1/2"	3"	4"	20 lbs.	12	11	4	40120 (7)	24	29201	29300
30164	23"	6"	4"	22 1/2"	5 1/2"	4"	20 lbs.	6	21	8	40130 (7)	24	29201	29300
30184	23"	8"	4"	22 1/2"	7"	4"	20 lbs.	6	25	8	40150 (7)	24	29201	29300
30174	23"	11"	4"	22 1/2"	10"	4"	20 lbs.	6	35	16	40170 (7)	24	29201	29300

One color per carton: Specify Red, Blue, Yellow, Green, White or Clear. Order in carton quantities. \* ( ) = Max. # of dividers per bin. \*\*29300 must be cut to length to fit 30110.



Bin Cups	Outside Dimensions (In.)			
Model No.	L	W	H	Ctn. Qty.
30101	2	3 1/4	3	48
30102	2 3/4	5	3	24

## ACCESSORIES



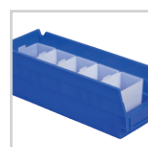
**Dividers**  
Create additional storage compartments (see chart)



**10° Extended Label Holder**  
Model No. 40410  
Not compatible with 30110. (See Pg. 11)



**Adhesive Labels & Card Stock Holders**  
Card stock holders fit in bins' existing slot; Adhesive labels also available



**Bin Cups**  
Lift out easily for parts retrieval (see chart)



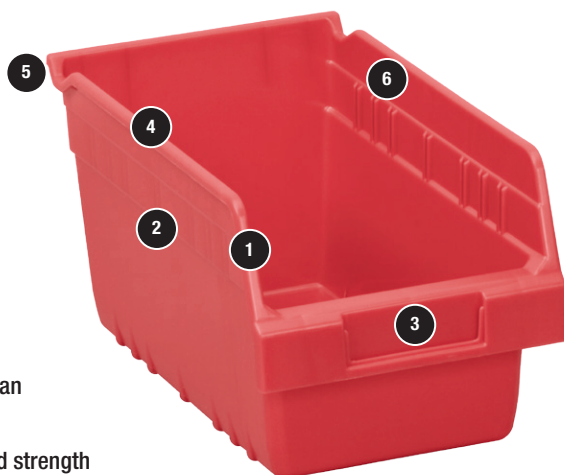
# ShelfMax® Bins

6" HIGH SHELF BINS MAXIMIZE STORAGE CAPACITY

800.253.2467  
akro-mils.com



STORAGE BINS –  
SHELF STYLE



## FEATURES

- 1 Front opening is ¾" higher than comparable 6" products
- 2 Reinforced side ribs for added strength
- 3 Large label area aids in part identification and bar code scanning
- 4 Rolled ridge provides added strength and durability when filled to capacity
- 5 Built-in rear hanglock allows bin to tilt out for complete access
- 6 Optional dividers create additional storage options

## PRODUCT HIGHLIGHTS

- **CAPACITY** – Bins offer 85% more storage than traditional 4" bins
- **EFFICIENT** – Works with Akro-Mils steel shelving, wire shelving, pick racks and bench racks
- **DURABLE** – Superior construction compared to corrugated bins
- **VARIETY** – Available in 7 sizes and 6 colors: Red, Blue, Yellow, Green, White and Clear

ShelfMax	Outside Dimensions (In.)			Inside Dimensions (In.)			Storage Capacity			Accessories		
Model No.	L	W	H	L	W	H	Cubic Inches	Bin Load Capacity	Ctn. Qty.	Width Dividers*	Divider Pkg. Qty.	Card Stock
30040	11½	4½	6	9¾	2½	5½	175	20 lbs.	16	40020 (7)	12	29301
30048	17½	4½	6	16	2½	5½	280	25 lbs.	8	40020 (7)	12	29301
30080	11½	8½	6	9¾	6½	5½	398	35 lbs.	8	40040 (7)	12	29301
30088	17½	8½	6	16	6½	5½	648	35 lbs.	8	40040 (7)	12	29301
30090	11½	6½	6	9¾	5	5½	310	30 lbs.	10	40030 (7)	12	29301
30094	23½	6½	6	21¾	5	5½	686	35 lbs.	10	40030 (7)	12	29301
30098	17½	6½	6	16	5	5½	505	35 lbs.	10	40030 (7)	12	29301

One color per carton: Specify Red, Blue, Yellow, Green, White or Clear. Order in carton quantities. \* ( ) = Max. # of dividers per bin.

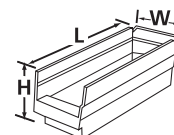
## COLORS

Red, Yellow, Blue, Green, White, Clear



NEW!

AVAILABLE IN  
**CLEAR**



## ACCESSORIES



### Dividers

Create additional storage compartments



### Adhesive Labels & Card Stock Holders

Card stock holders fit in bins' existing slot; Adhesive labels also available. (See Pg. 11)



### 10° Extended Label Holder

Model No. 40410  
Designed for larger bar code scanning. (See Pg. 11)

## RELATED PRODUCTS

Create the perfect storage solution — mix and match your ShelfMax Bins with these products



33-35 Pick Rack Systems



46-48 Wire Shelving Systems



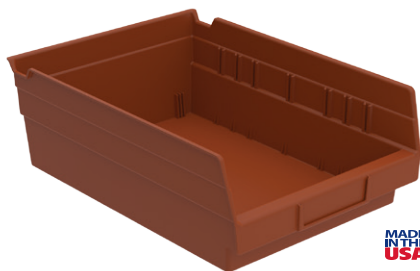
49-51 Steel Shelving Systems

# Specialty Shelf Bins

EARTHSAVER SHELF BINS : VANTAGEBINS : ECONOMY BINS

## EarthSaver® Series: Shelf Bins

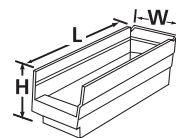
SHELF BINS MADE OF RECYCLED MATERIAL



- **RECYCLED** – EarthSaver Shelf Bins made of 100% recycled material. Make a positive impact on the environment!
- **VERSATILE** – Optional dividers keep items neatly separated
- **VARIETY** – Available in 8 sizes and 3 colors: Hunter Green, Sandstone and Terra Cotta
- **ACCESSORIES** – Width Dividers and Extended Label Holders available. (See Pg. 12)

### COLORS

Hunter Green, Sandstone, Terra Cotta



EarthSaver Shelf Bins	Outside Dimensions (In.)			Inside Dimensions (In.)			Cups per Bin		
Model No.	L	W	H	L	W	H	Ctn. Qty.	Small 30101	Large 30102
30110RECY	11½	2¾	4	10¼	1½	4	24	3	–
30120RECY	11½	4½	4	10¼	3	4	24	5	2
30130RECY	11½	6½	4	10¼	5½	4	12	9	4
30150RECY	11½	8½	4	10¼	7½	4	12	11	4
30128RECY	17½	4½	4	16½	3	4	12	8	3
30138RECY	17½	6½	4	16½	5½	4	12	15	6
30124RECY	23½	4½	4	22½	3	4	12	11	4
30164RECY	23½	6½	4	22½	5½	4	6	21	8

One color per carton: SS = Sandstone, TC = Terra Cotta and HG = Hunter Green. Order in carton quantities.

## VantageBins™

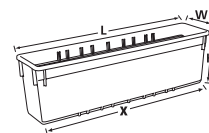
DIVIDABLE UP TO 10 SECTIONS



- **V-GROOVE** – Standard VantageBin has molded-in V-groove bottom to keep items upright and prevent them from sliding
- **NESTABLE** – Both models of VantageBin nest when empty to conserve storage space
- **DURABLE** – Industrial-grade polymer construction
- **VARIETY** – 30420 available in 3 colors: White, Gray, Yellow; 30400 available in 2 colors: White, Gray

### COLORS

White, Gray, Yellow



VantageBin	Outside Dimensions (In.)			Inside Dimensions (In.)					
Model No.	Description	L	W	H	L	W	H	X	Ctn. Qty. Dividers/Pk.
30400YEL10PK	Standard Bin	16¾	7¼	5½	15½	6½	5½	15½	10 –
30400WHI10PK	Standard Bin	16¾	7¼	5½	15½	6½	5½	15½	10 –
30400GRY10PK	Standard Bin	16¾	7¼	5½	15½	6½	5½	15½	10 –
30420WHI6PK	Dividable Bin	24	5½	7	22½	3½	7	22½	6 40420/12
30420GRY6PK	Dividable Bin	24	5½	7	22½	3½	7	22½	6 40420/12

One color per carton: Specify color when ordering. Order in carton quantities. Weight capacity per bin is 40 lbs.

## Economy Bins

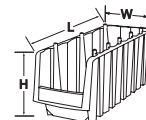
NESTING & STACKING SHELF BIN



- **VERSATILE** – Economy Bins make full use of shelf space on 12" or 18" deep shelving and stack to fill space between shelves
- **DURABLE** – Industrial-grade polymer construction
- **EXCLUSIVE** – The only small parts bin that can nest and stack
- **EFFICIENT** – Generous bin opening allows easy access to items

### COLOR

Black



Economy Bins	Outside Dimensions (In.)			Inside Dimensions (In.)			
Model No.	L	W	H	L	W	H	Ctn. Qty.
30796BLACK	8½	6½	5	6¾	4	4¾	10
30716BLACK	11½	6½	5	9¾	4	4¾	10
30776BLACK	17½	6½	7	14¾	3½	6¾	10
30718BLACK	11½	8½	5	9	5¾	4¾	8
30778BLACK	17½	8½	7	14¾	5½	6¾	8

Order in carton quantities.



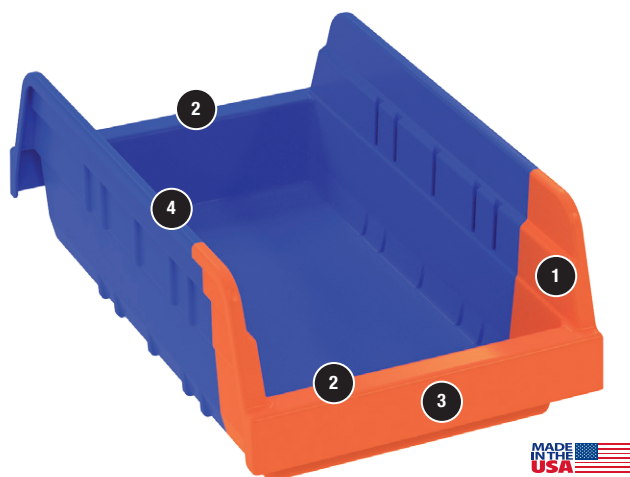
# Indicator® Bin

## TWO-TONED INVENTORY CONTROL BIN

800.253.2467  
akro-mils.com



STORAGE BINS –  
SHELF STYLE



### FEATURES

- 1 Bright orange trigger color shows low stock levels
- 2 Innovative double-hopper bin can be filled or picked from both sides
- 3 Large label area on both sides of bin
- 4 Rolled ridge provides added strength and durability
- 5 Width dividers (sold separately) used to separate reserve stock



### PRODUCT HIGHLIGHTS

- **INVENTORY CONTROL** – Prevents stockouts with visual recognition when supplies need to be replenished
- **EASY TO USE:**
  - STOCK* – using the divider to designate volume for the inventory reserve
  - PICK* – from the blue side of the bin until you reach the divider
  - FLIP* – the bin to the orange reserve to show inventory levels are low
  - REPLENISH* – the bin and repeat!
- **VALUE** – Low-cost alternative to high-end inventory control systems
- **VARIETY** – Bins available in 4 sizes

**COLOR**  
Blue/Orange

**BINtelligence**  
SERIES  
by Akro-Mils

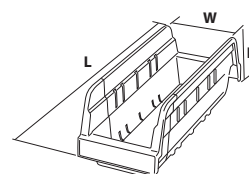


**Stock Pick Flip Replenish**

**Indicator®**

Indicator Bins		Outside Dimensions (In.)			Inside Dimensions (In.)			Accessories		
Model No.	Description	L	W	H	L	W	H	Bin Ctn. Qty.	Dividers*	Divider Pkg. Qty.
36442BLUE	Indicator Bin (Blue/Orange)	11%	4%	4	9%	2%	3%	24	40120	24
36448BLUE	Indicator Bin (Blue/Orange)	17%	4%	4	16%	2%	3%	12	40442	12
36462BLUE	Indicator Bin (Blue/Orange)	11%	6%	4	9%	5%	3%	12	40130	24
36468BLUE	Indicator Bin (Blue/Orange)	17%	6%	4	16%	5%	3%	12	40462	12

\*Dividers sold separately.



### RELATED PRODUCTS

Create the perfect storage solution – mix and match your Indicator Bins with these products



**33-35** Pick Rack Systems



**46-48** Wire Shelving Systems



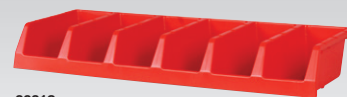
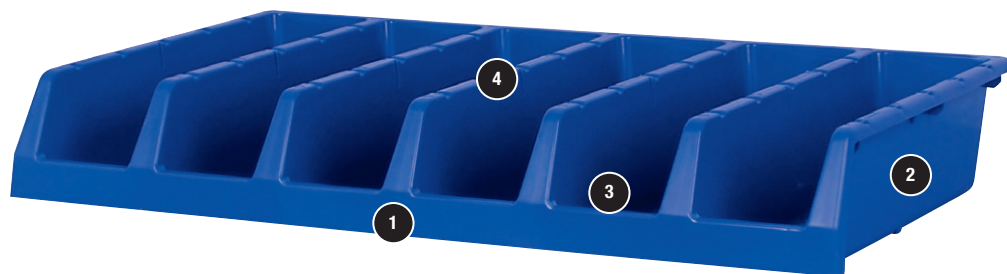
**49-51** Steel Shelving Systems





# System Bins™

## SINGLE-PIECE, 6-COMPARTMENT STORAGE UNIT



30312



30318

### COLORS

Red, Yellow, Blue



## FEATURES

- 1 Large label area for easy content identification
- 2 Smooth surfaces make the bin easy to fill and keep clean
- 3 Wide hopper front allows easy access for quick parts picking
- 4 Sturdy, double-wall construction for strength and durability

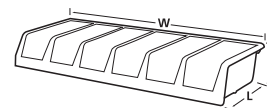
## PRODUCT HIGHLIGHTS

- **SINGLE-PIECE** – Configured six-across in a single unit, 33" wide by 5" high
- **VALUE** – A cost-effective alternative to flimsy, individual cardboard boxes
- **DURABLE** – Sturdy interior double-wall construction. One-piece, injection-molded
- **STACKABLE** – Can be safely stacked using a 3/8" wood dowel rod (not included)
- **NESTABLE** – Bins nest when empty to conserve space
- **VARIETY** – Available in 12" or 18" depths. Colors: Red, Yellow, Blue

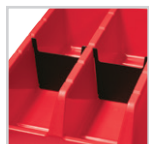
## System Bins™

System Bins		Dimensions (In.)			Bin Compartment Dimensions (In.)**			
Model No.	Description	L	W	H	L	W	H	Ctn. Qty.
30312	12" System Bin	12	33	5	10 1/4	3 1/4	4 1/4	5
30318	18" System Bin	18	33	5	16 1/4	3 1/4	4 1/4	5
40312*	System Bin Divider (Black only)	5/2	4 7/8	4 7/8	–	–	–	6 pk.

One color per carton: Specify Red, Blue or Yellow. Order in carton quantities. \*One divider per compartment, six per unit. \*\*Bottom inside dimension per compartment.



## ACCESSORIES



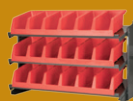
**System Bin Divider**  
Width dividers create additional storage options

## RELATED PRODUCTS

System Bins work with these products



**33-35** Pick Rack Systems



**33-35** Bench Pick Rack



**46-48** Wire Shelving Systems



**49-51** Steel Shelving Systems



**60** Shelf Carts



# AkroDrawers®

## HEAVY-DUTY STORAGE DRAWERS

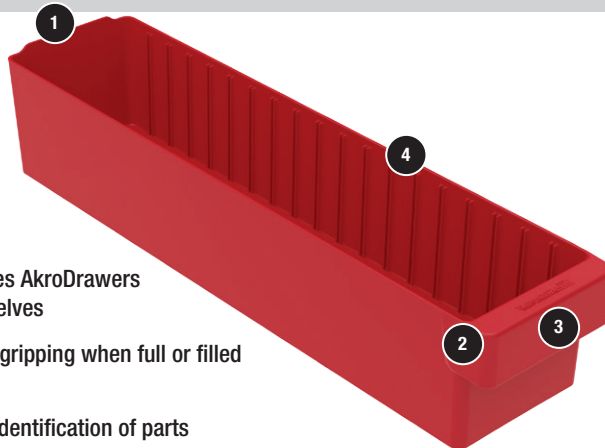
800.253.2467  
akro-mils.com



STORAGE BINS –  
SHELF STYLE

### FEATURES

- 1 Sturdy backstop tab ensures AkroDrawers can hang securely from shelves
- 2 Wide front handle for easy gripping when full or filled with heavy contents
- 3 Large label area for quick identification of parts
- 4 Multiple divider slots allow for customized storage solutions



### PRODUCT HIGHLIGHTS

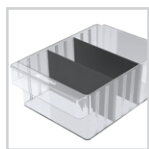
- **PARTS PROTECTION** – AkroDrawers help keep your supplies, tools and parts secure and dust-free
- **FUNCTIONAL** – Drawers can be used with Akro-Mils' Super Modular Cabinets, Stackable Cabinets, Secure Mini-Cabinets, Louvered Carts, Pick Racks and Enclosed Steel Shelving
- **DURABLE** – Color drawers made of high-impact polystyrene; Crystal Clear drawers made of a durable acrylic blend
- **STACKABLE** – AkroDrawers can be stacked to optimize space
- **VARIETY** – Available in 9 sizes and 5 colors: Red, Yellow, Blue, Crystal Clear, Gray

### AkroDrawers®

AkroDrawers Model No.	Outside Dimensions (In.)			Inside Dimensions (In.)			Capacity/Qty.			
	L	W	H	L	W	H	Weight Capacity	Ctn. Qty.	Dividers	Pkg. Qty
31142	11½	3¾	4½	10¼	3½	4⅞	15 lbs.	6	41440	6
31148	17½	3¾	4½	16¼	3½	4⅞	20 lbs.	6	41440	6
31162	11½	5⅞	4½	10¼	4⅞	4⅞	20 lbs.	6	41460	6
31168	17½	5⅞	4½	16¼	4⅞	4⅞	25 lbs.	6	41460	6
31164	23½	5⅞	4½	22½	4⅞	4⅞	25 lbs.	6	41460	6
31182	11½	8¾	4½	10¼	7¾	4⅞	20 lbs.	4	41480	6
31188	17½	8¾	4½	16¼	7¾	4⅞	25 lbs.	4	41480	6
31112	11½	11½	4½	10¼	10½	4⅞	25 lbs.	4	41410	8
31118	17½	11½	4½	16¼	10½	4⅞	25 lbs.	4	41410	8

Specify drawer color when ordering: Red, Blue, Yellow, Gray or Crystal Clear.

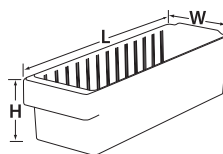
### ACCESSORIES



**Width Dividers**  
Available for all sizes!



**Adhesive Labels**  
Adhesive labels are ideal for content identification and form a permanent bond with bins. (See Pg. 11)



### COLORS

Red, Yellow, Blue, Crystal Clear, Gray



AVAILABLE IN  
**CLEAR**  
CRYSTAL



### RELATED PRODUCTS

Create the perfect storage solution — mix and match your AkroDrawers with these products

