

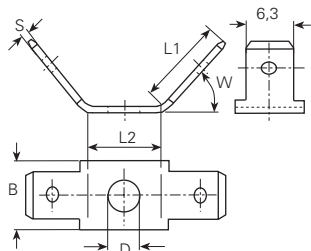
# Flachstecker schraubbar und schweisssbar 6,3 mm

## Languettes vissable et soudable

### Tabs screwable and weldable

Werkstoff/Matière/Material  
 .6 = Messing/laiton/brass  
 .8 = rostfreier Stahl/acier inox/stainless steel  
 .9 = Stahl/acier/steel

■ = Oberflächen/Surface/Surface-plating  
 Seite/page/page 5.011

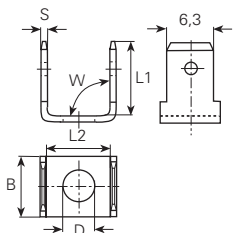


**\* = ohne Bohrung / \* = sans trou / \* = without hole**

øD mm	B mm	L1 mm	L2 mm	W mm	S mm	Artikelnummer Numéro d'article Part-No.
*	8	10	10.5	45°	0.8	<b>3870a.80</b>
<b>3.2</b>	8	10	10.5	45°	0.8	<b>3871a.6■</b>
<b>3.7</b>	8	10	10.5	45°	0.8	<b>3873a.6■</b>
<b>4.2</b>	8	8	11	45°	0.8	<b>38750a.6■</b>
	10	10	12	45°	0.8	<b>3875a.6■</b>
	10	10	12	45°	0.8	<b>3875a.9■</b>
<b>5.2</b>	10	10	12	45°	0.8	<b>3878a.6■</b>
<b>6.2</b>	10	10	12	45°	0.8	<b>3879a.6■</b>

Werkstoff/Matière/Material  
 .2 = Bronze/bronze  
 .4 = Kupfer/cuivre/copper  
 .6 = Messing/laiton/brass  
 .8 = rostfreier Stahl/acier inox/stainless steel  
 .9 = Stahl/acier/steel

■ = Oberflächen/Surface/Surface-plating  
 Seite/page/page 5.011



**\* = ohne Bohrung / \* = sans trou / \* = without hole**

øD mm	B mm	L1 mm	L2 mm	W mm	S mm	Artikelnummer Numéro d'article Part-No.
*	8	9.7	10.5	90°	0.8	<b>3870c.80</b>
	8	9.7	10.5	90°	0.8	<b>3870c.9■</b>
<b>2.7</b>	8.8	10	7	90°	0.8	<b>38712c.6■</b>
	8.8	10	7	90°	0.8	<b>38732.4■</b>
<b>3.1</b>	8.8	10	7	90°	0.8	<b>38711c.2■</b>
<b>3.2</b>	8	9.7	10.5	90°	0.8	<b>3871c.6■</b>
	8	9.6	9.8	90°	0.8	<b>3876q02.6■</b>
<b>3.7</b>	8.8	10	7	90°	0.8	<b>38731.2■</b>
	8.8	10	7	90°	0.8	<b>38733.6■</b>
	8	9.7	10.5	90°	0.8	<b>3873c.6■</b>
	8	9.7	10.5	90°	0.8	<b>3873c.9■</b>
<b>4.2</b>	8	10.7	11	90°	0.8	<b>3876c.6■</b>
<b>4.5</b>	9.2	14.2	7.5	90°	0.8	<b>38760c.6■</b>
<b>5.3</b>	8	9.6	9.8	90°	0.8	<b>3876s02.6■</b>
<b>6.3</b>	8	9.6	9.8	90°	0.8	<b>3876t02.6■</b>
	10	10	12	90°	0.8	<b>3879c.6■</b>
<b>7</b>	10	10	12	90°	0.8	<b>3879d.4■</b>
	10	10	12	90°	0.8	<b>3879d.9■</b>