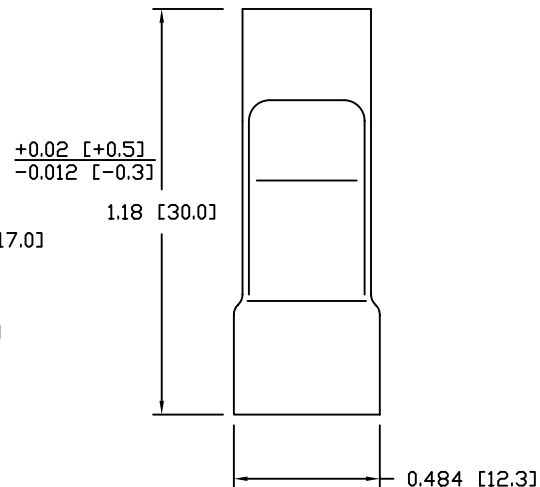
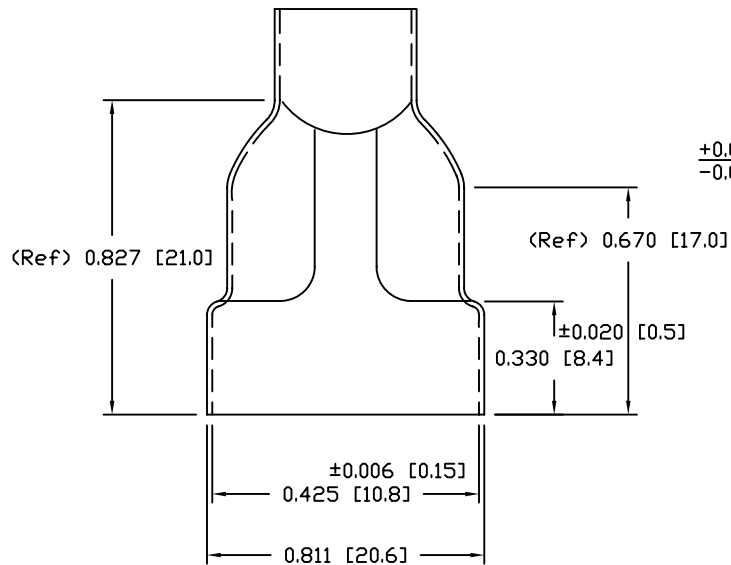
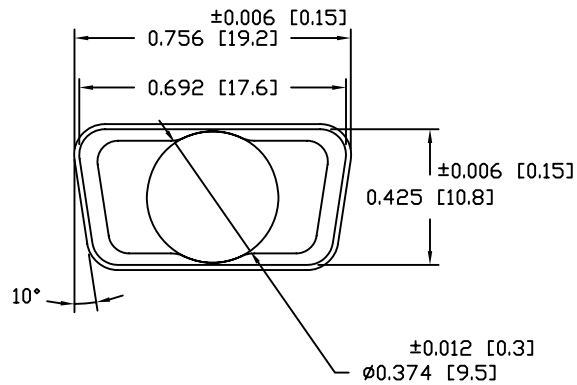


REV	DATE	DESCRIPTION	APP
A	09-APR-09	ECN 0676	



NOTES:

1. MATERIAL: CR STEEL
2. PLATING: TIN PLATE
3. TOLERANCE UNLESS OTHERWISE SPECIFIED

DECIMAL

.X	±0.020 [±0.5]
.XX	±0.012 [±0.30]
.XXX	±0.006 [±0.15]

4. COMPLIANCE NOTE:
PART MUST BE IN COMPLIANCE TO:
DIRECTIVE 2002/95/EC of 27 January 2003 [RoHS]

THIS IS A CONTROLLED DOCUMENT AND IS
SUBJECT TO CHANGE. CONTACT NORTHERN
TECHNOLOGIES ENGINEERING FOR THE
LATEST REVISION.

UNLESS OTHERWISE SPECIFIED 1. ALL DIMENSIONS ARE IN INCHES [MM] 2. DIMENSIONS ARE TYPICAL	SIGNATURES		DATE	Northern Technologies			
	DRAWN	J.S.D.	30-SEP-05	PART NUMBER A30E800900 DESCRIPTION 9C □/M CAN 9.5MM EXIT [RoHS]			
	CHECKED	S.C.N.	30-SEP-05				
	ENG						
	ISSUED		30-SEP-05	SHEET 1	CODE 520_166	DWG NO. 0002-520-166	
				SCALE N.T.S.		SHEET 1 OF 1	

THIS DRAWING IS THE PROPERTY OF
NORTHERN TECHNOLOGIES AND SHOULD
NOT BE REPRODUCED WITHOUT NORTHERN
TECHNOLOGIES WRITTEN PERMISSION.