



PS3F Series

ITS-P-13029Q

Signal Hybrid 100 Amps Power Supply, Front Access Plug-in Connector



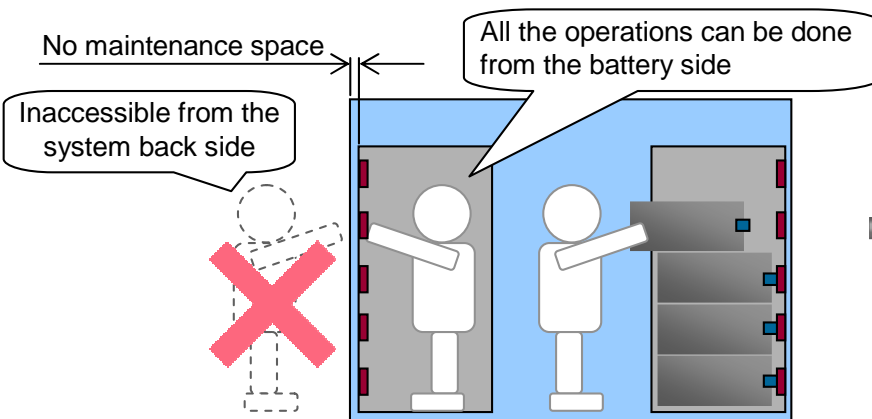
◆ Features

1. "Front Access" on system rack side allows cable assembly from mating side.
2. Front access is best suited to the systems with no space at the back side for maintenance.
3. For signal lines, GT8E connector with a good track record in automotive market is applied.
4. Floating screw allows ± 2.5 mm floating mate
5. Finger protection meeting IP2X requirements contributes to operators' safety.
(Female power contact side only)
6. UL, C-UL certified*, will be TÜV approved

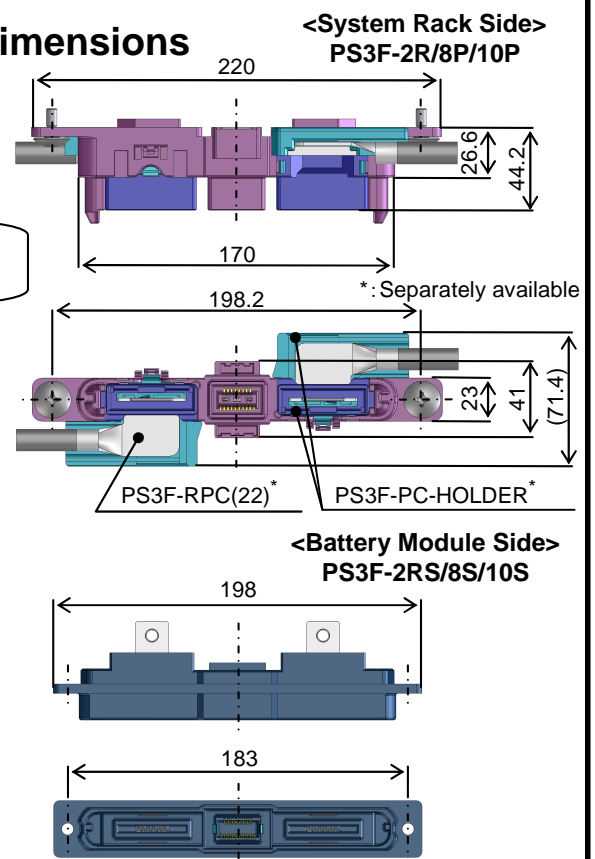
*Except signal lines (Conditions for safety standards vary depending on submitted applications of current and voltage ratings. Contact Hirose for details.

◆ "Front Access" Type

PS3F allows power/signal cables attachment/detachment from the plug-in side (front side). Optimum for systems installed closely to the container wall etc. with no maintenance space at the back face.



◆ Dimensions



◆ Specifications

	Power Line	Signal Line
Operating Temperature Range	-40 °C to +105 °C (includes temperature rise by current carrying)	
Rated Current/pin	100 Amps	1 Amp
Rated Voltage	AC/DC 1000 V	AC/DC 250 V
Contact Resistance	0.3 mΩ Max. (DC 1A)	60 mΩ Max (100 mA)
Insulation Resistance	5000 MΩ Min. (DC 250V)	100 MΩ Min. (DC 500V)
Withstanding Voltage	AC 2000V, 1 minute	AC 650V, 1 minute
Durability	100 times (Durability of GT8E: 30 times)	

<Signal Connector>

- 8 pos. : GT8E-8S-HU
- 10 pos. : GT8E-10S-HU
- System rack side contact : GT8E-2022SCF(01)
(Gold plated)
- Battery module side contact: GT8E-2022SCF
(Tin plated)

- Applicable wire: 22sq (WL1, WL2, UL3832AWM)
- RoHS, Halogen free (900 ppm maximum chlorine, 900 ppm maximum bromine, and 1500 ppm maximum total of chlorine and bromine)

Specifications herein are subject to change without notice. Contact Hirose for latest specifications, drawings or availabilities.