

Leila LZ1 series



Ordering number FA10787
Description FA10787-LZ1-M

Family	Leila	FWHM	26 degrees
Type	Assembly	Efficiency	91
LED	P4	cd/Im	-
Color	White	Gerber File	Available
Diameter	21.6 mm		
Height	14.7 mm		
Style	Round		
Optic Material	PMMA		
Holder Material	PC		
Fastening	Glue		
Status	Ready		



Ordering number FA10788
Description FA10788-LZ1-RS

Family	Leila	FWHM	10 degrees
Type	Assembly	Efficiency	95
LED	P4	cd/Im	-
Color	White	Gerber File	Available
Diameter	21.6 mm		
Height	14.7 mm		
Style	Round		
Optic Material	PMMA		
Holder Material	PC		
Fastening	Glue		
Status	Ready		



Ordering number FA10789
Description FA10789-LZ1-Rec

Family	Leila	FWHM	36+24 degrees
Type	Assembly	Efficiency	-
LED	P4	cd/Im	-
Color	White	Gerber File	Available
Diameter	21.6 mm		
Height	14.7 mm		
Style	Round		
Optic Material	PMMA		
Holder Material	PC		
Fastening	Glue		
Status	Ready		



Ordering number FA10790
Description FA10790-LZ1-D

Family	Leila	FWHM	14 degrees
Type	Assembly	Efficiency	92
LED	P4	cd/Im	-
Color	White	Gerber File	Available
Diameter	21.6 mm		
Height	14.7 mm		
Style	Round		
Optic Material	PMMA		
Holder Material	PC		
Fastening	Glue		
Status	Ready		

Leila LZ1 series



Ordering number FA11102
Description FA11102_LZ1-O-90

Family	Leila	FWHM	40+16 degrees
Type	Assembly	Efficiency	-
LED	P4	cd/lm	-
Color	White	Gerber File	Available
Diameter	21.6 mm		
Height	14.7 mm		
Style	Round		
Optic Material	PMMA		
Holder Material	PC		
Fastening	Glue		
Status	Ready		



Ordering number FA11455
Description FA11455_LZ1-M2

Family	Leila	FWHM	degrees
Type	Assembly	Efficiency	-
LED	P4	cd/lm	-
Color	White	Gerber File	Available
Diameter	21.6 mm		
Height	14.7 mm		
Style	Round		
Optic Material	PMMA		
Holder Material	PC		
Fastening	Tape		
Status	Ready		



Leila LZ1 series

Specially designed for P4 series of LEDs.

Fastening to heat sink with a PU foam adhesive tape of automotive grade.

Please find fastening details by clicking link below:

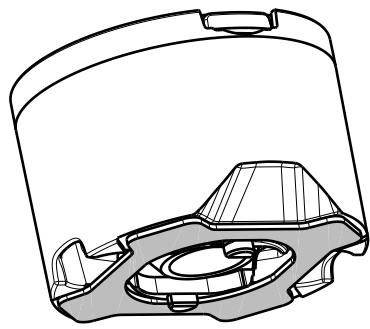
http://ledil.fi/sites/default/files/Documents/Technical/Installation/20110406_DataSheet_TAPE.pdf

We advise customer to ensure the suitability and sufficiency of the bond in the end product. For example, mechanical stress, vibration and holes on the surface of the circuit board weaken the strength of the tape.

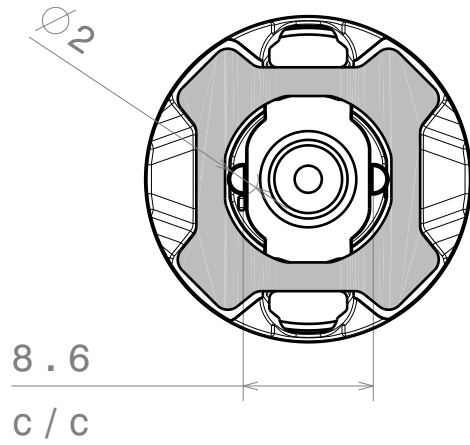
Fastening of holden to PCB with appropriate adhesive. By clicking link below you can find Ledil recommended glue options.

http://ledil.fi/sites/default/files/Documents/Technical/Installation/20110406_DataSheet_GLUES.pdf

We advise customer to ensure the suitability and sufficiency of the bond in the end product. For example, mechanical stress, vibration and holes on the surface of the circuit board weaken the strength of the glue.



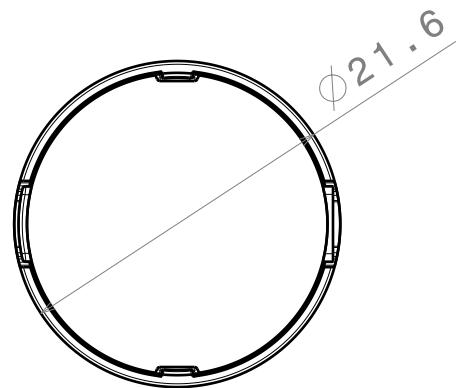
Isometric view



Lens

Holder

tape



Top view

Materials:
Lens: PMMA
Holder: PC white
Tape: PU FOAM

This drawing is our property.
It can't be reproduced
or communicated without
our written agreement.

LEDIL

L
T
F
F

e
e
l
i
n

N
n

d
h

DRAWING TITLE

Datasheet LR2-ES series assy

DRAWN BY

m

DATE

28.12.2010

CHECKED BY

h

h

DATE

28.12.2010

DESIGNED BY

pl

DATE

27.08.2010

SIZE

A4

DRAWING NUMBER

-

REV

1

SCALE

1:1

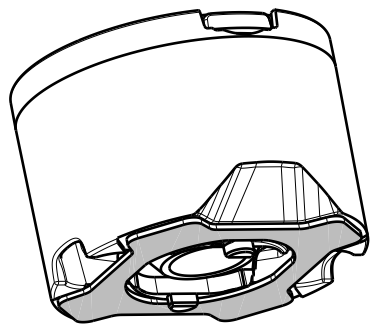
WEIGHT (g)

SHEET

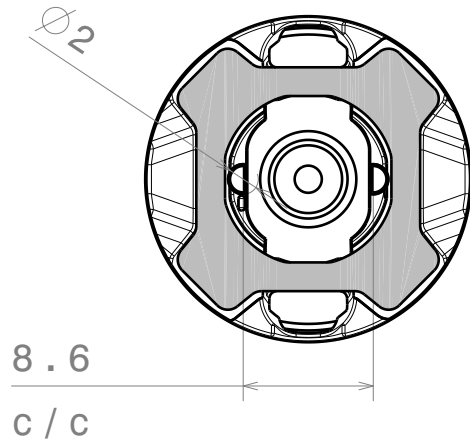
1/1

D

A



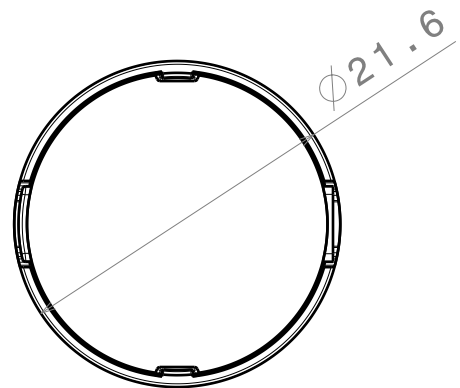
Isometric view



Lens

Holder

tape



Top view

Materials:
Lens: PMMA
Holder: PC white
Tape: PU FOAM

This drawing is our property.
It can't be reproduced
or communicated without
our written agreement.

LEDIL

L
T
F
F

e
e
l
i
n

N
n

d
h

DRAWING TITLE

Datasheet LR2-ES series assy

DRAWN BY

m

DATE

28.12.2010

CHECKED BY

h

h

DATE

28.12.2010

DESIGNED BY

pl

DATE

27.08.2010

SIZE

A4

DRAWING NUMBER

-

REV

1

SCALE

1:1

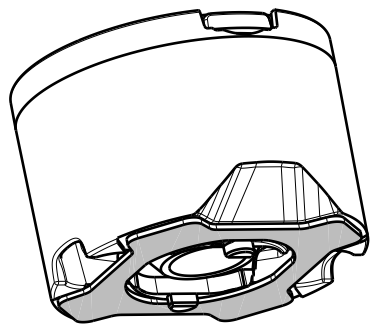
WEIGHT (g)

SHEET

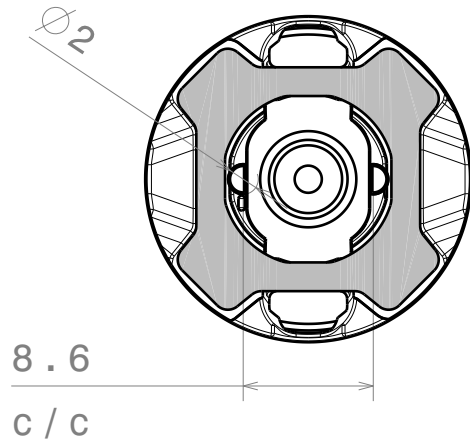
1/1

D

A



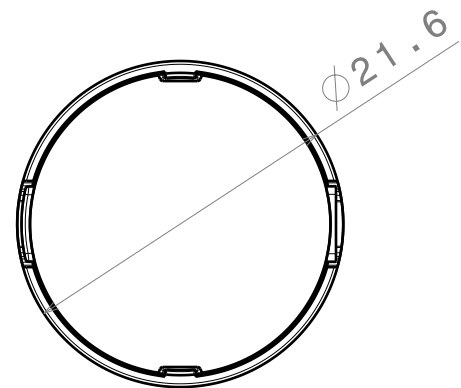
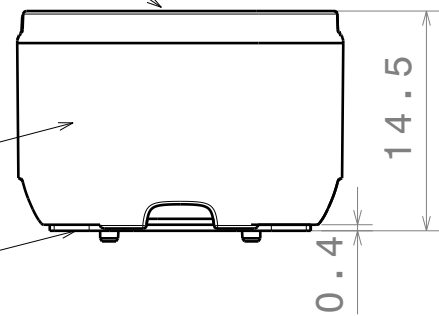
Isometric view



Lens

Holder

tape



Top view

Materials:
Lens: PMMA
Holder: PC white
Tape: PU FOAM

This drawing is our property.
It can't be reproduced
or communicated without
our written agreement.



L
T
F
F

e
e
l
i
n

d
h

DRAWING TITLE

Datasheet LR2-ES series assy

DRAWN BY

m

DATE

28.12.2010

CHECKED BY

h

h

DATE

28.12.2010

DESIGNED BY

pl

DATE

27.08.2010

SIZE

A4

DRAWING NUMBER

-

REV

1

SCALE

1:1

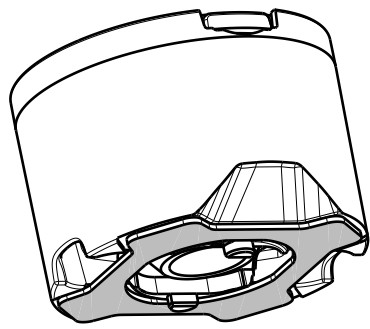
WEIGHT (g)

SHEET

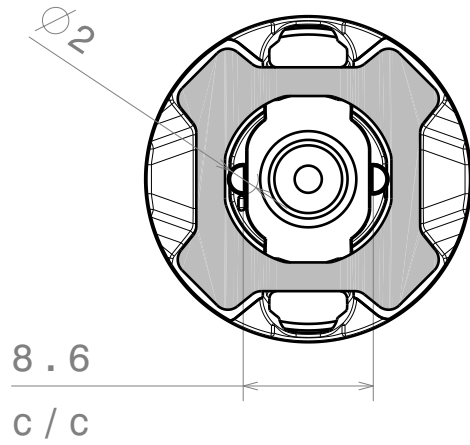
1/1

D

A



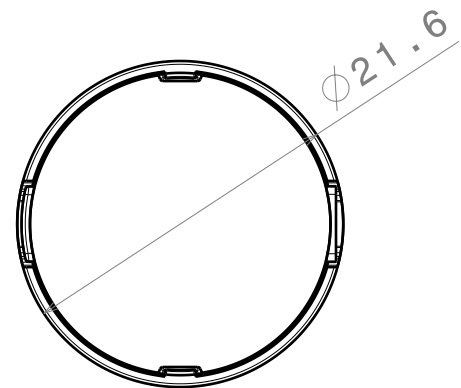
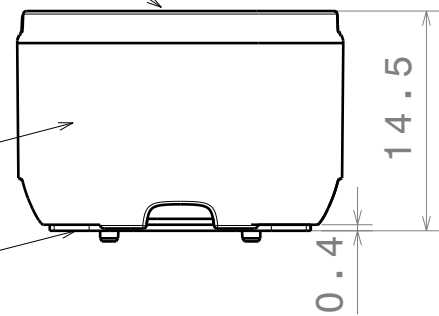
Isometric view



Lens

Holder

tape



Top view

Materials:
Lens: PMMA
Holder: PC white
Tape: PU FOAM

This drawing is our property.
It can't be reproduced
or communicated without
our written agreement.



L
T
F
F

e
e
l
i
n

d
h

DRAWING TITLE

Datasheet LR2-ES series assy

DRAWN BY

m

DATE

28.12.2010

CHECKED BY

h

h

DATE

28.12.2010

DESIGNED BY

pl

DATE

27.08.2010

SIZE

A4

DRAWING NUMBER

-

REV

1

SCALE

1:1

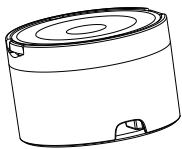
WEIGHT (g)

SHEET

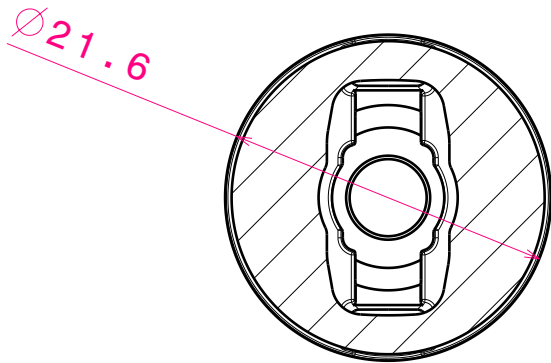
1/1

D

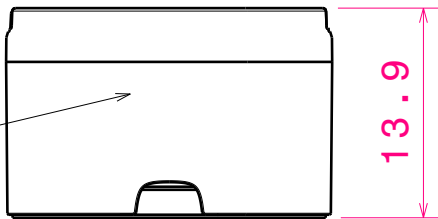
A



Isometric view
Scale: 1:1



Bottom view



Front view

Holder: L03-LH1-tape

Tape 0.2mm

Materials;
Lens: PMMA
Holder: PC
Tape: PU Foam

This drawing is our property.
It can't be reproduced
or communicated without
our written agreement.



L
T
F
F

e
e
l
i
n

N

d
h

DRAWING TITLE

Datasheet L02-W tape assy

DRAWN BY

p

DATE

12.01.2010

CHECKED BY

t k

DATE

19.12.2009

DESIGNED BY

pv

DATE

06.12.2009

SIZE

A4

DRAWING NUMBER

-

REV

1

SCALE

2:1

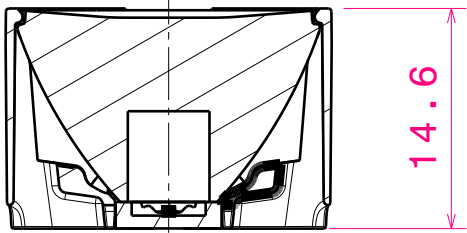
WEIGHT (g)

SHEET

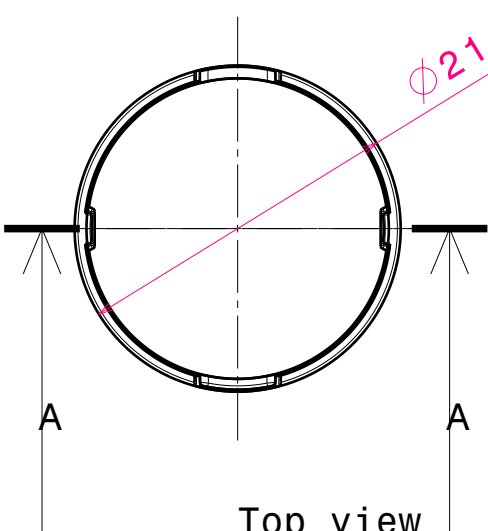
1 / 1

D

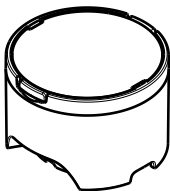
A



Section view A-A
Scale: 2:1



Top view
Scale: 2:1



Isometric view
Scale: 1:1

Materials:
lens PMMA
holder PC

This drawing is our property.
It can't be reproduced
or communicated without
our written agreement.



L
T
F
F

e
e
l
i
n

N

d
h

DRAWING TITLE

DATASHEET L02 Series

DRAWN BY
P V
DATE
19.05.2008

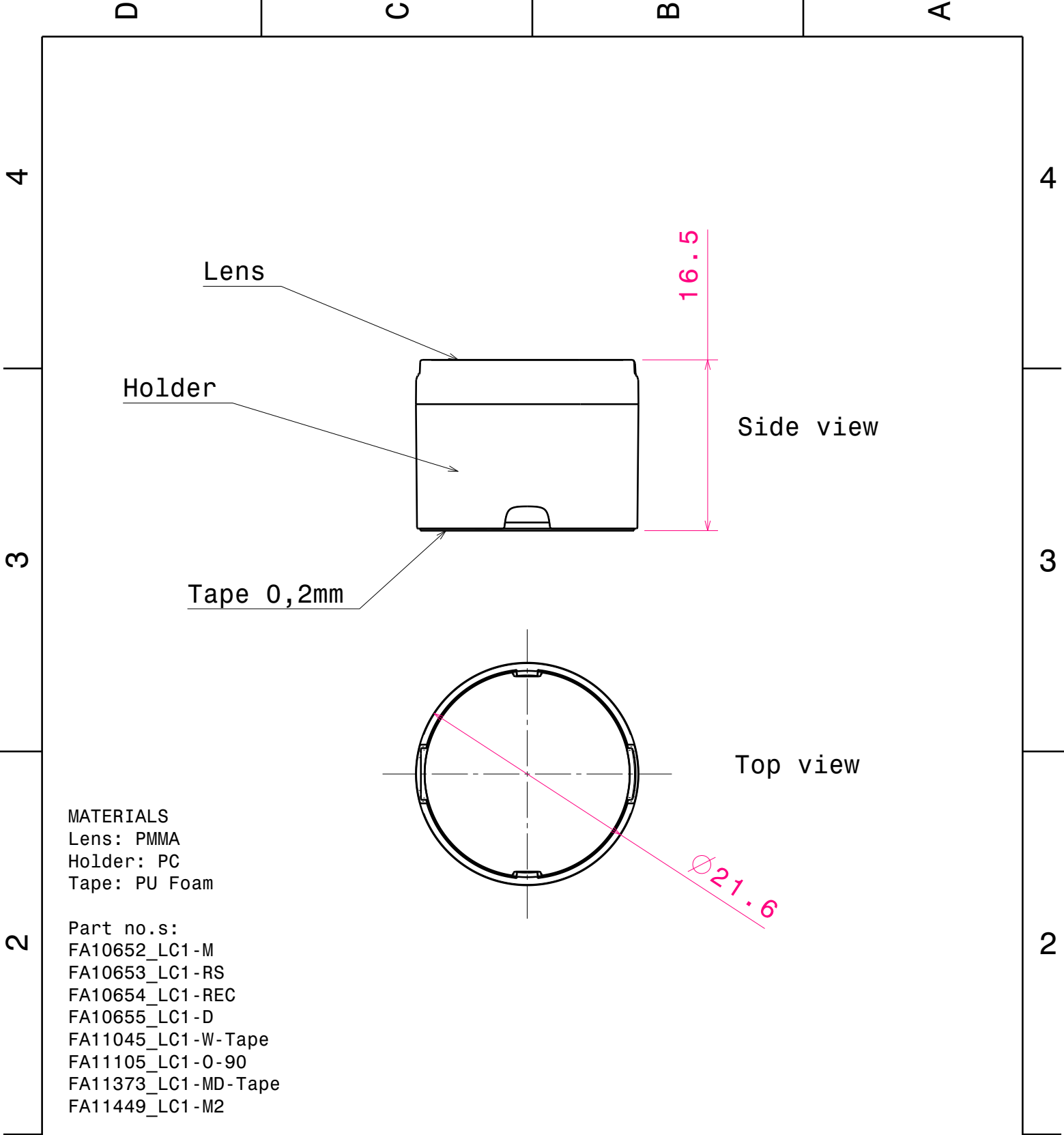
CHECKED BY
T K
DATE
19.05.2008

DESIGNED BY
HH
DATE
30.04.2008

SIZE A4	DRAWING NUMBER	REV 0.1
SCALE 2:1	WEIGHT (g)	SHEET 1 / 1

D

A



This drawing is our property.
It can't be reproduced
or communicated without
our written agreement.



L
T
F
F

e
e
l
i
N
n

d
h

DRAWING TITLE

Datasheet Assembly LC1-series

DRAWN BY

DATE

17.01.2011

CHECKED BY

DATE

25.09.2008

DESIGNED BY

DATE

24.07.2008

SIZE

A4

DRAWING NUMBER

-

REV

1

SCALE

2:1

WEIGHT (g)

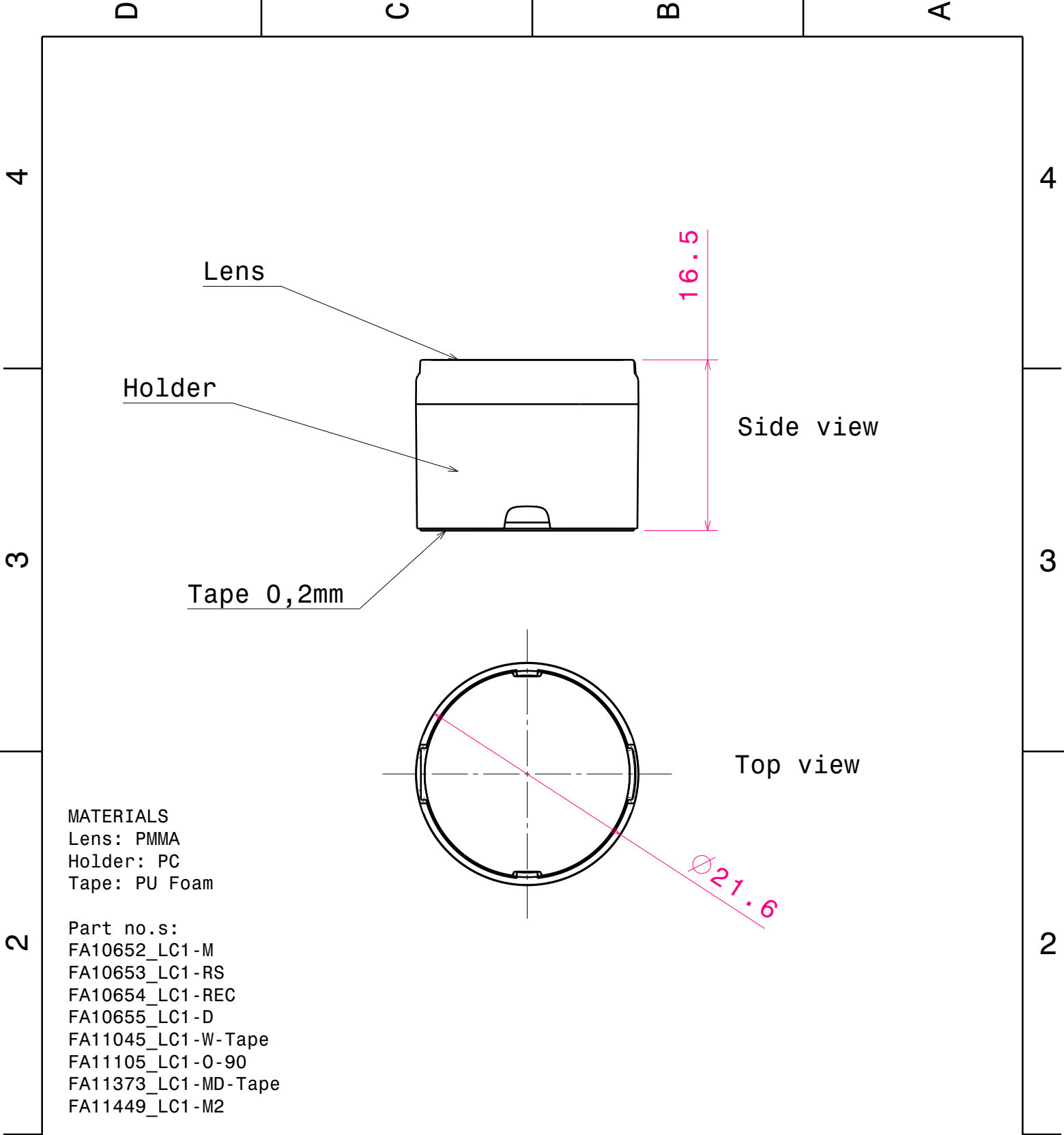
-

SHEET

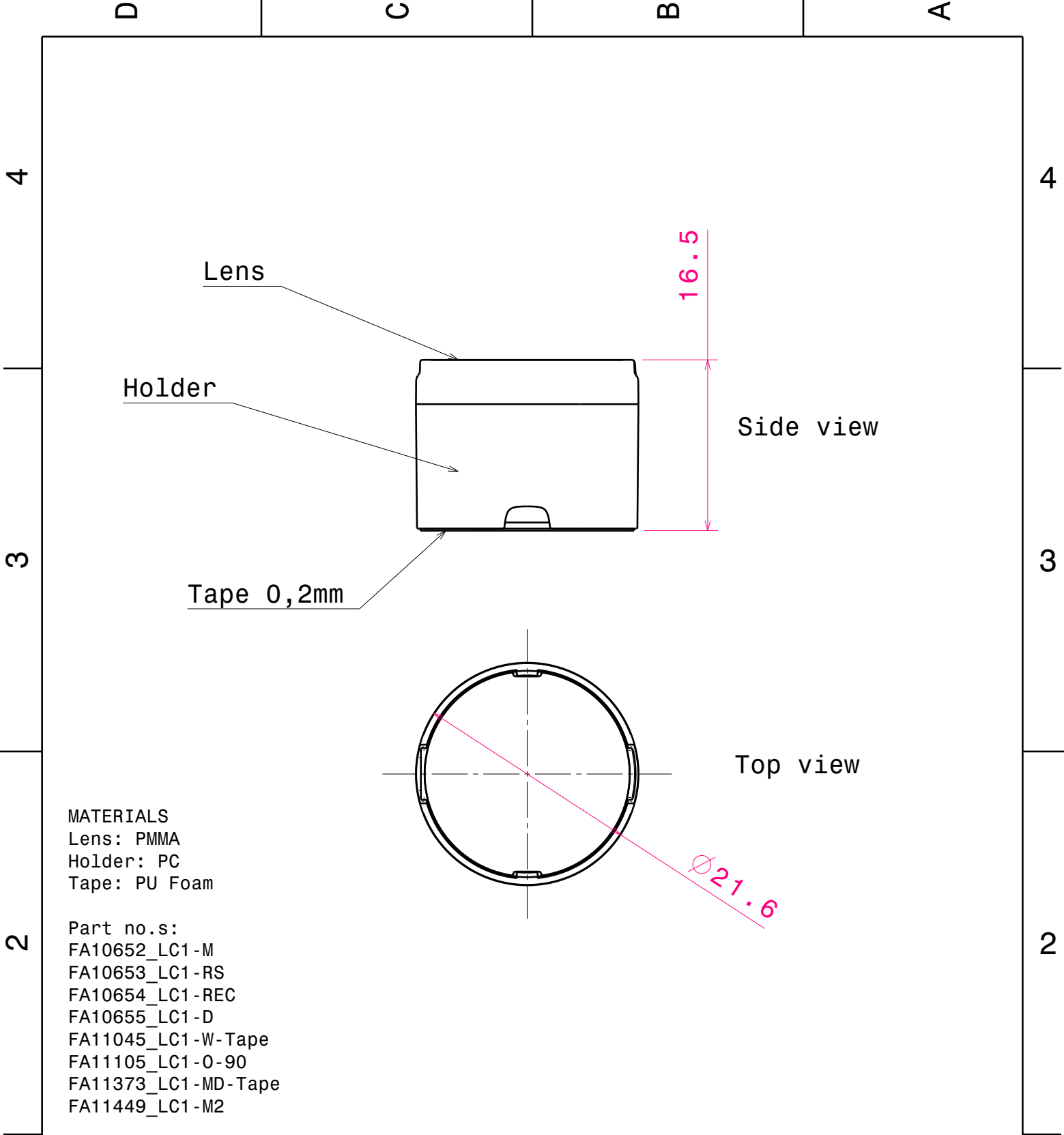
1 / 1

D

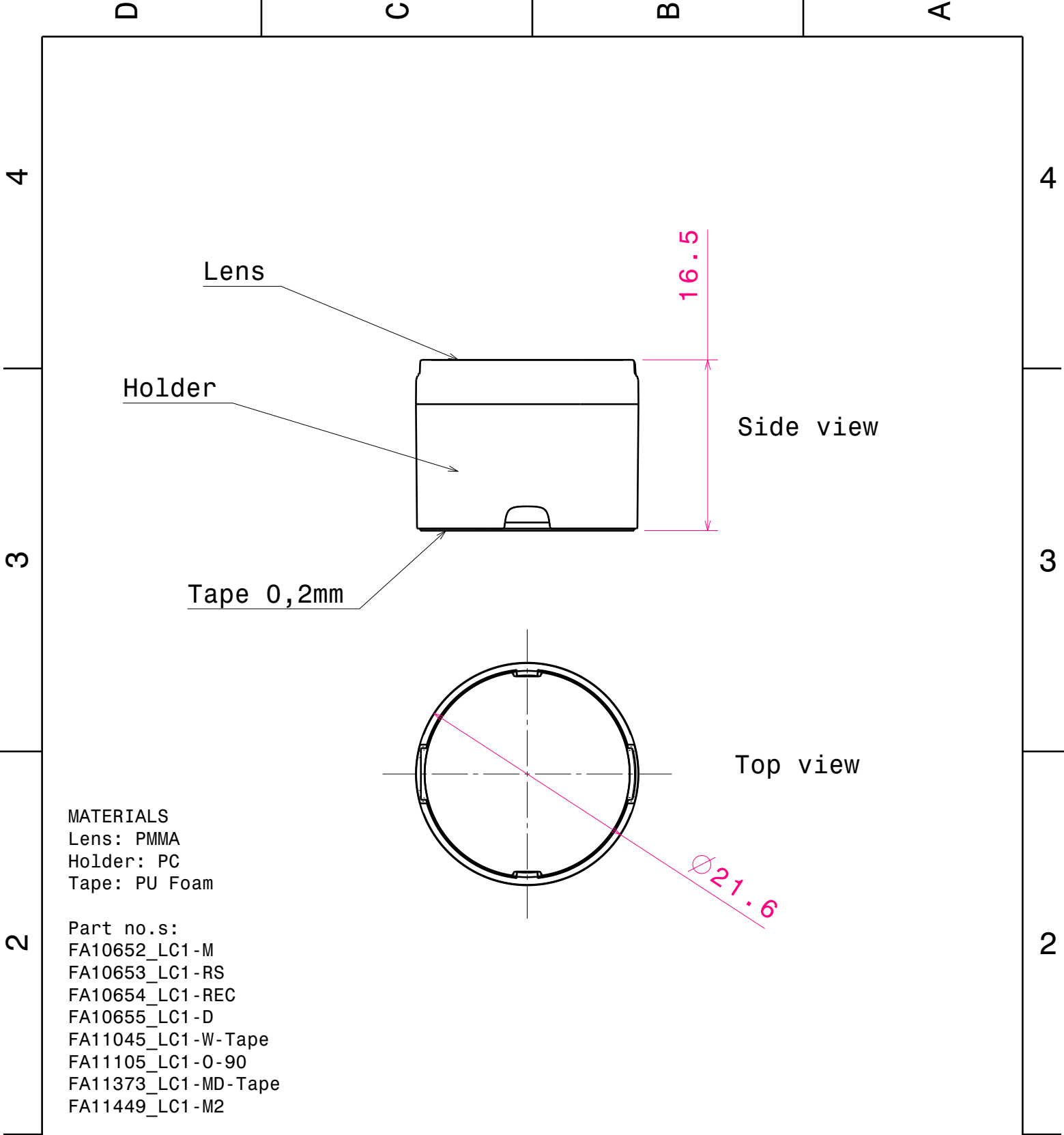
A



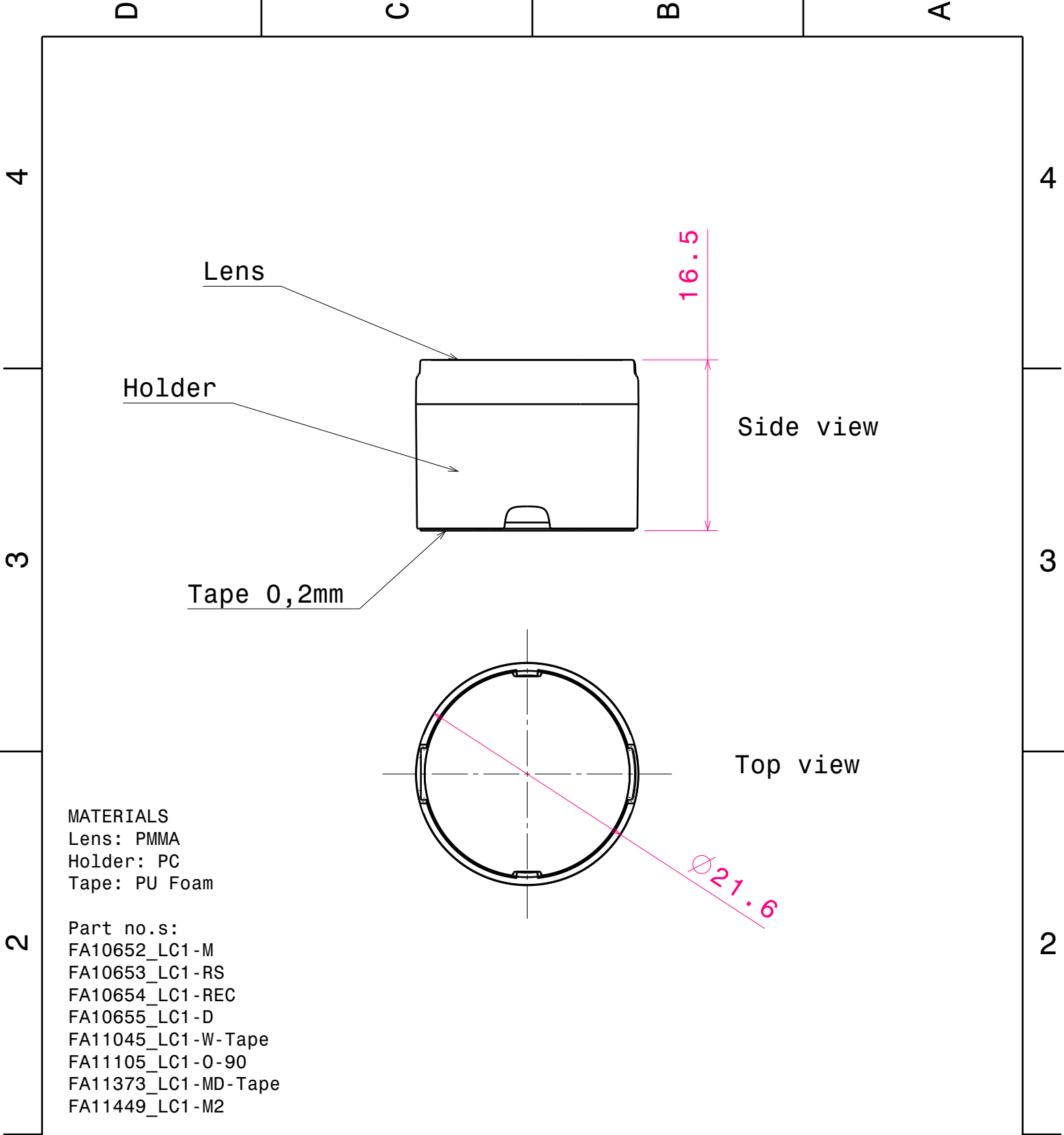
This drawing is our property. It can't be reproduced or communicated without our written agreement.		<div>LEDIL</div> <div>L T F F e e l i n</div>			
		DRAWING TITLE			
DRAWN BY p	DATE 17.01.2011	Datasheet Assembly LC1-series			
CHECKED BY t k	DATE 25.09.2008	SIZE A4	DRAWING NUMBER -	REV 1	
DESIGNED BY HH	DATE 24.07.2008	SCALE 2 : 1	WEIGHT (g) -	SHEET 1 / 1	



This drawing is our property. It can't be reproduced or communicated without our written agreement.		<div>LEDIL</div> <div>L T F F e e l i n</div>			
		DRAWING TITLE			
DRAWN BY p	DATE 17.01.2011	Datasheet Assembly LC1-series			
CHECKED BY t k	DATE 25.09.2008	SIZE A4	DRAWING NUMBER -	REV 1	
DESIGNED BY HH	DATE 24.07.2008	SCALE 2 : 1	WEIGHT (g) -	SHEET 1 / 1	



This drawing is our property. It can't be reproduced or communicated without our written agreement.		<div>LEDIL</div> <div>L T F F e e l i n</div>			
		DRAWING TITLE			
DRAWN BY p	DATE 17.01.2011	Datasheet Assembly LC1-series			
CHECKED BY t k	DATE 25.09.2008	SIZE A4	DRAWING NUMBER -	REV 1	
DESIGNED BY HH	DATE 24.07.2008	SCALE 2 : 1	WEIGHT (g) -	SHEET 1 / 1	



This drawing is our property.
It can't be reproduced
or communicated without
our written agreement.



L
T
F
F

e
e
l
i
N
n

d
h

DRAWING TITLE

Datasheet Assembly LC1-series

DRAWN BY

DATE

17.01.2011

CHECKED BY

DATE

25.09.2008

DESIGNED BY

DATE

24.07.2008

SIZE

A4

DRAWING NUMBER

-

REV

1

SCALE

2:1

WEIGHT (g)

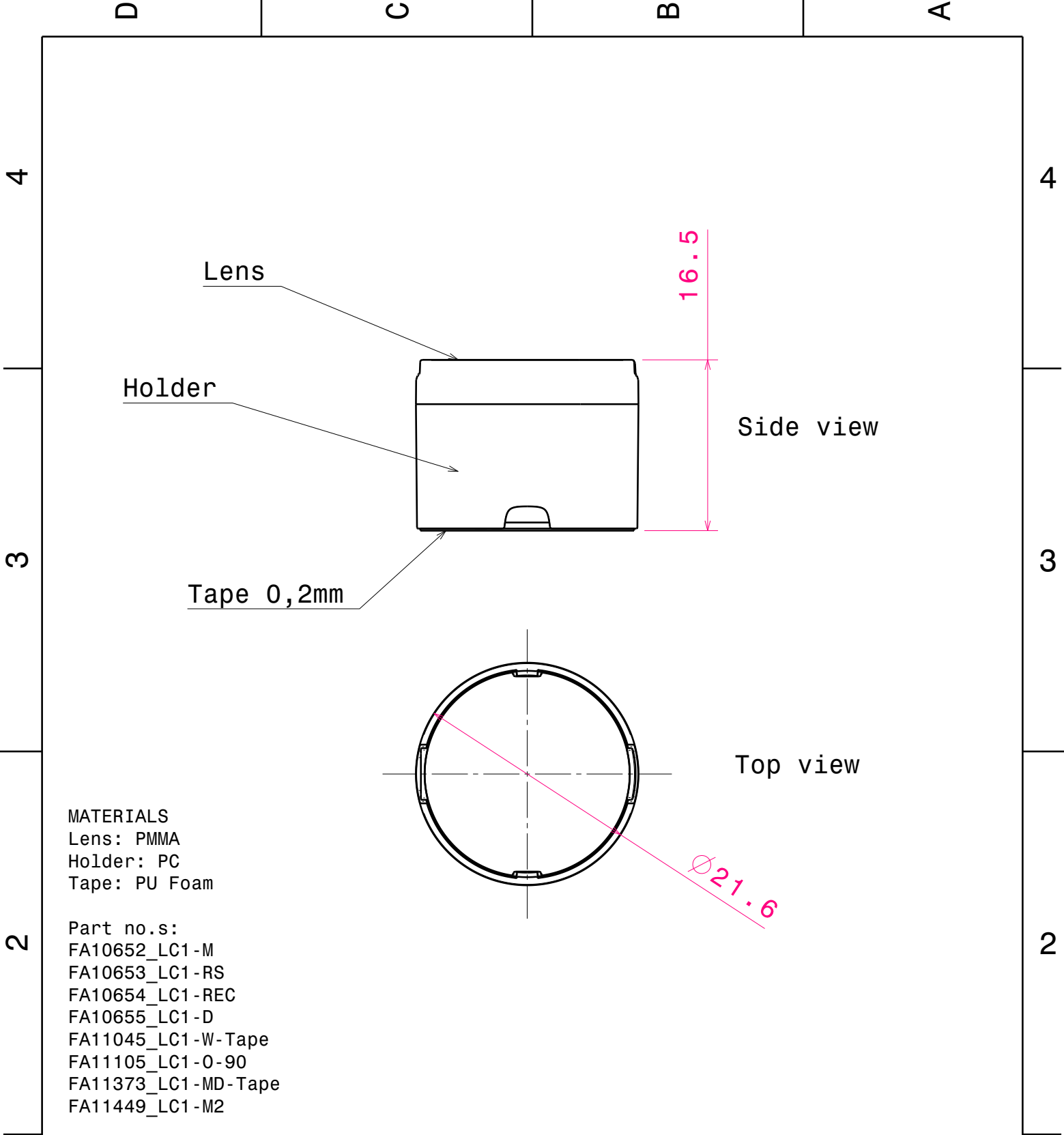
-

SHEET

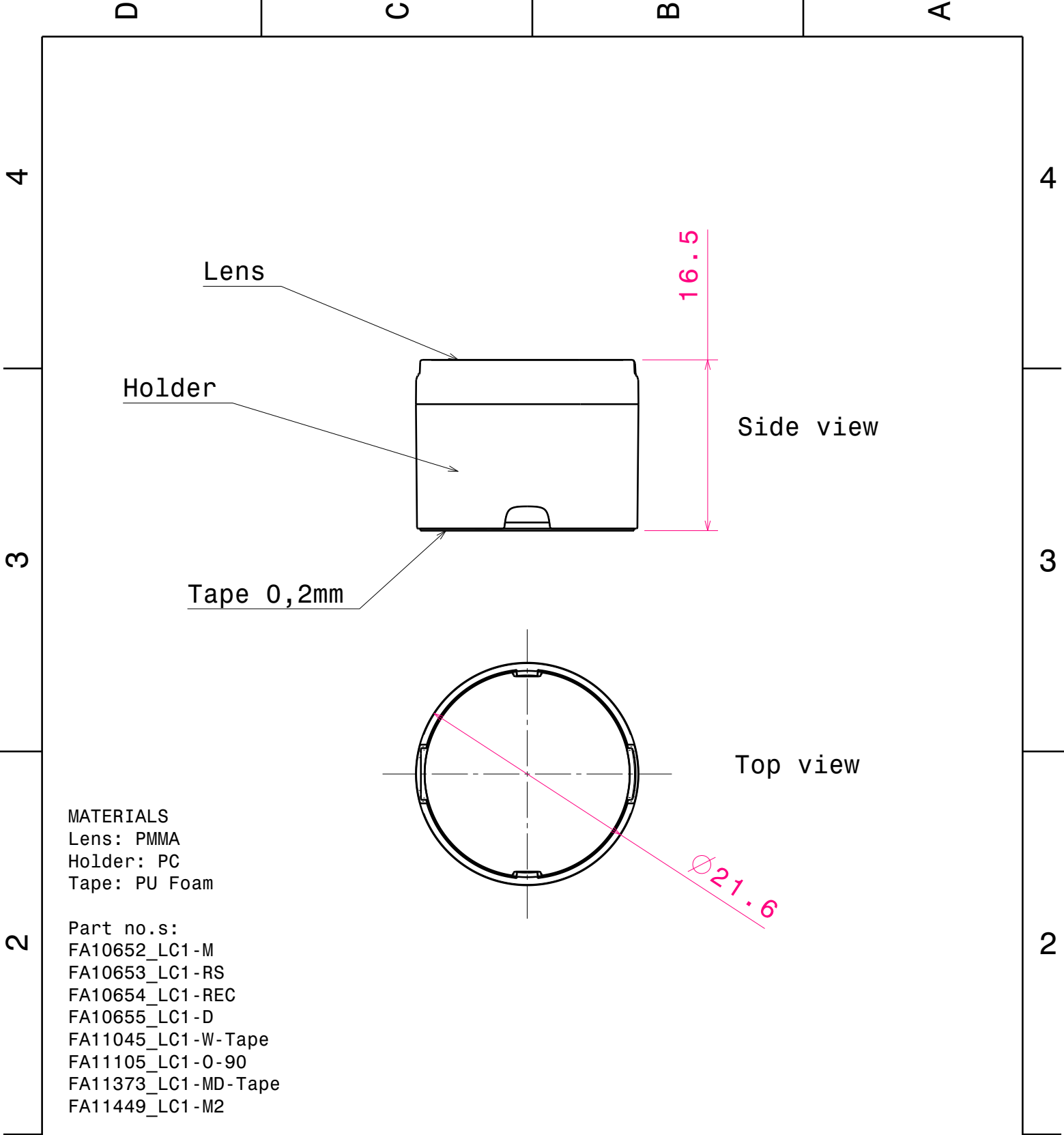
1 / 1

D

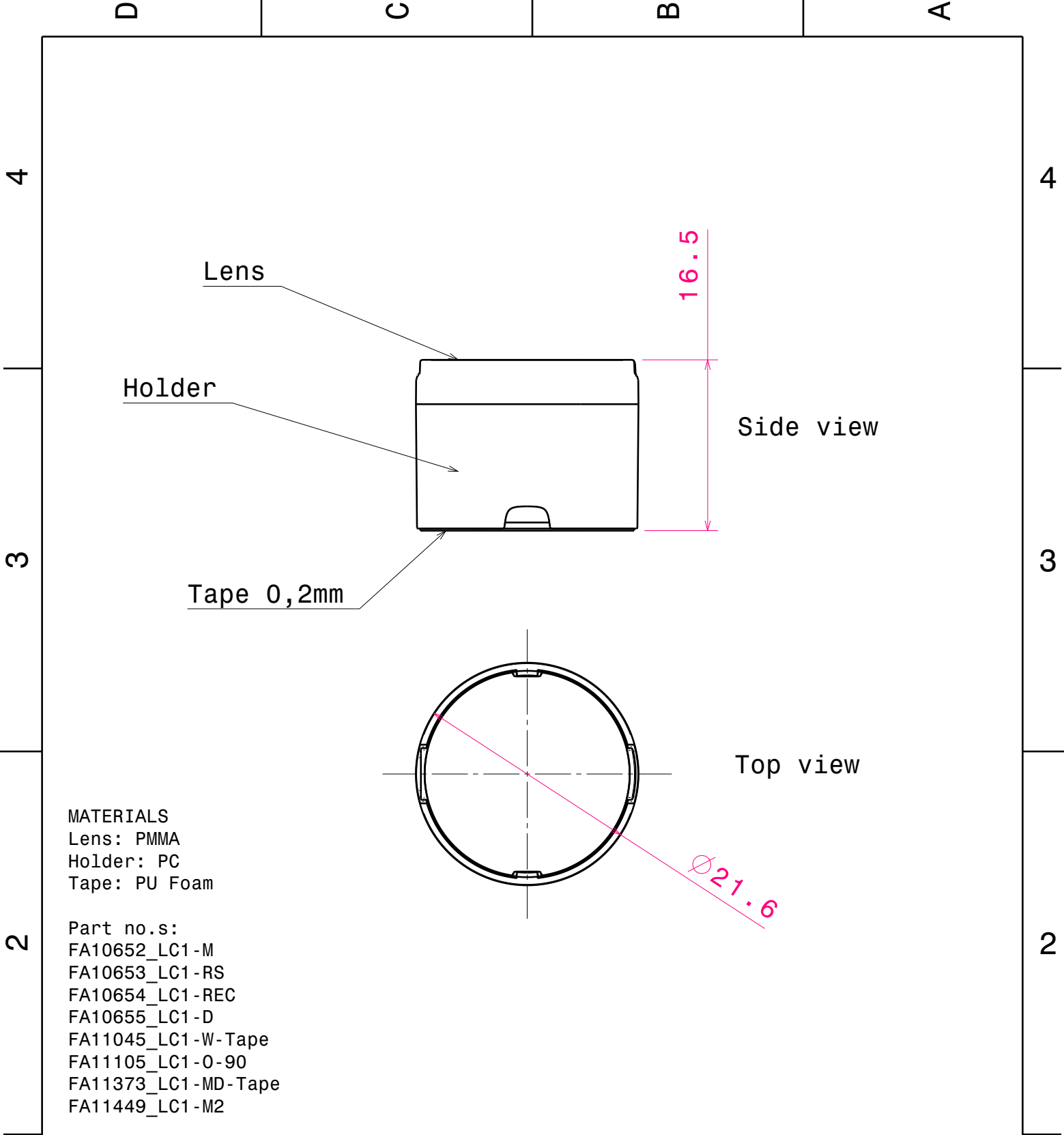
A



This drawing is our property. It can't be reproduced or communicated without our written agreement.		<div>LEDIL</div> <div>L T F F e e l i n</div>			
		DRAWING TITLE			
DRAWN BY p	DATE 17.01.2011	Datasheet Assembly LC1-series			
CHECKED BY t k	DATE 25.09.2008	SIZE A4	DRAWING NUMBER -	REV 1	
DESIGNED BY HH	DATE 24.07.2008	SCALE 2 : 1	WEIGHT (g) -	SHEET 1 / 1	



This drawing is our property. It can't be reproduced or communicated without our written agreement.		<div>LEDIL</div> <div>L T F F e e l i n</div>			
		DRAWING TITLE			
DRAWN BY p	DATE 17.01.2011	Datasheet Assembly LC1-series			
CHECKED BY t k	DATE 25.09.2008	SIZE A4	DRAWING NUMBER -	REV 1	
DESIGNED BY HH	DATE 24.07.2008	SCALE 2 : 1	WEIGHT (g) -	SHEET 1 / 1	



This drawing is our property. It can't be reproduced or communicated without our written agreement.		<div>LEDIL</div> <div>L T F F e e l i n</div>			
		DRAWING TITLE			
DRAWN BY p	DATE 17.01.2011	Datasheet Assembly LC1-series			
CHECKED BY t k	DATE 25.09.2008	SIZE A4	DRAWING NUMBER -	REV 1	
DESIGNED BY HH	DATE 24.07.2008	SCALE 2 : 1	WEIGHT (g) -	SHEET 1 / 1	

D

C

B

A

4

4

3

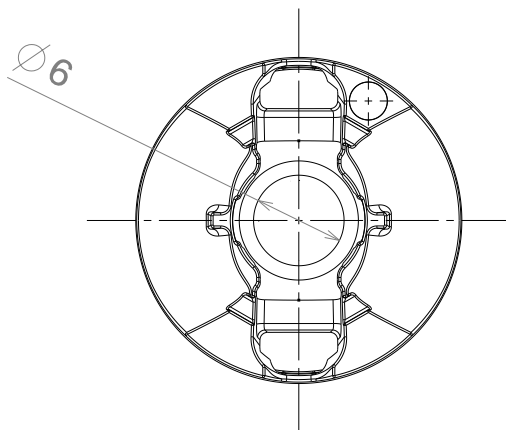
3

2

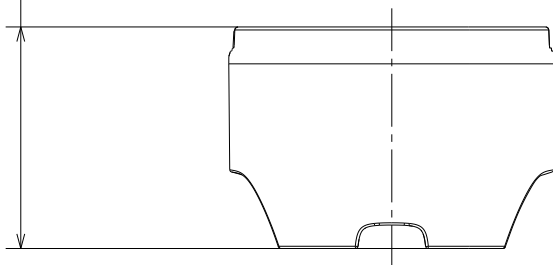
2

1

1

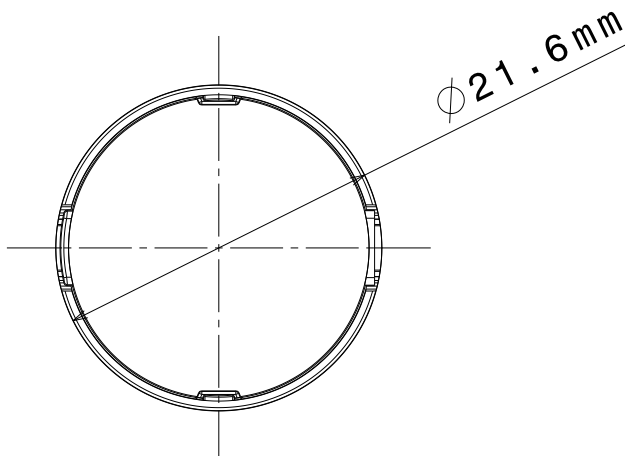


14.65 mm



Part no's :
FA10787_LZI-M
FA10788_LZ1-RS
FA10789_LZ1-Rec
FA10790_LZ1-D

Materials:
Lens PMMA
Holder PC



This drawing is our property.
It can't be reproduced
or communicated without
our written agreement.

LEDIL

Ledil Oy
Tehdaskatu 13
FIN-24100 SALO
Finland

DRAWING TITLE

Datasheet LZ1 Assy

DRAWN BY

pv

DATE

29.05.2009

CHECKED BY

HH

DATE

21.02.2008

DESIGNED BY

HH

DATE

21.02.2008

SIZE

A4

DRAWING NUMBER

REV

0.1

SCALE

2:1

WEIGHT (g)

SHEET

1/1

D

A