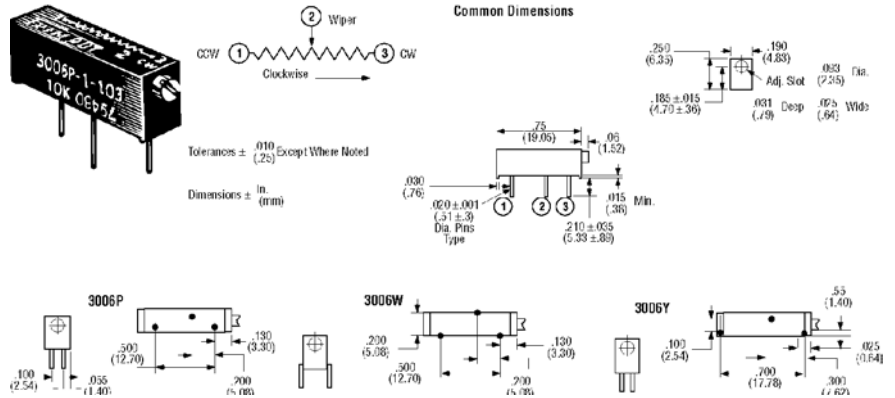


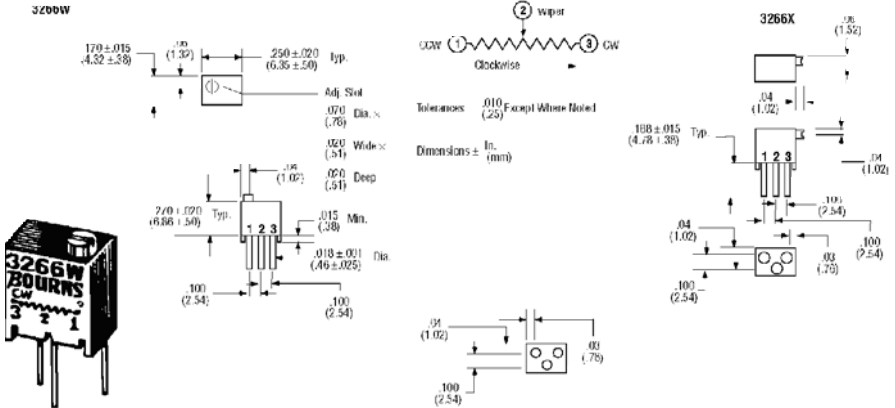
Model 3006 15-Turn/Cermet



1/4" high, low cost cermet trimmer offers infinite resolution, low temperature coefficient ± 100 PPM/ $^{\circ}$ C -55° C to $+125^{\circ}$ C. Sealed to withstand wave soldering and immersion cleaning. **Load Life:** 1000 hours, 0.75 watt at 70° C. $\pm 10\%$ tolerance. 15 turn nominal travel. **Suffix:** P, W and Y styles. **Dimensions:** $3/4 \times 0.19 \times 0.25$ ". See drawings below for pin configurations. **Weight:** .04 oz.

Stock No.	Mr.'s Type	Ohms	EACH					Stock No.	Mr.'s Type	Ohms	EACH				
			1-9	10-24	25-49	50-99	100-249				1-9	10-24	25-49	50-99	100-249
754-1001	3006P	10	1.55	1.41	1.35	1.28	1.20	754-1082	3006W	5K	1.66	1.50	1.41	1.35	1.28
754-1011	3006P	20	1.55	1.41	1.35	1.28	1.20	754-1083	3006Y	5K	1.66	1.50	1.41	1.35	1.28
754-1021	3006P	50	1.55	1.41	1.35	1.28	1.20	754-1091	3006P	10K	1.55	1.41	1.35	1.28	1.20
754-1031	3006P	100	1.55	1.41	1.35	1.28	1.20	754-1092	3006W	10K	1.79	1.62	1.52	1.46	1.38
754-1032	3006W	100	1.66	1.50	1.41	1.35	1.28	754-1093	3006Y	10K	1.66	1.50	1.41	1.35	1.28
754-1033	3006Y	100	1.66	1.50	1.41	1.35	1.28	754-1101	3006P	20K	1.55	1.41	1.35	1.28	1.20
754-1041	3006P	200	1.55	1.41	1.35	1.28	1.20	754-1102	3006W	20K	1.66	1.50	1.41	1.35	1.28
754-1042	3006W	200	1.66	1.50	1.41	1.35	1.28	754-1103	3006Y	20K	1.66	1.50	1.41	1.35	1.28
754-1051	3006P	500	1.55	1.41	1.35	1.28	1.20	754-1111	3006P	50K	1.55	1.41	1.35	1.28	1.20
754-1052	3006W	500	1.66	1.50	1.41	1.35	1.28	754-1112	3006W	50K	1.66	1.50	1.41	1.35	1.28
754-1053	3006Y	500	1.66	1.50	1.41	1.35	1.28	754-1113	3006Y	50K	1.66	1.50	1.41	1.35	1.28
754-1061	3006P	1K	1.55	1.41	1.35	1.28	1.20	754-1121	3006P	100K	1.55	1.41	1.35	1.28	1.20
754-1062	3006W	1K	1.66	1.50	1.41	1.35	1.28	754-1122	3006W	100K	1.66	1.50	1.41	1.35	1.28
754-1063	3006Y	1K	1.66	1.50	1.41	1.35	1.28	754-1123	3006Y	100K	1.66	1.50	1.41	1.35	1.28
754-1071	3006P	2K	1.55	1.41	1.35	1.28	1.20	754-1131	3006P	200K	1.55	1.41	1.35	1.28	1.20
754-1072	3006W	2K	1.66	1.50	1.41	1.35	1.28	754-1132	3006W	200K	1.66	1.50	1.41	1.35	1.28
754-1073	3006Y	2K	1.66	1.50	1.41	1.35	1.28	754-1141	3006P	1M	1.55	1.41	1.35	1.28	1.20
754-1081	3006P	5K	1.55	1.41	1.35	1.28	1.20	754-1151	3006P	2M	1.55	1.41	1.35	1.28	1.20

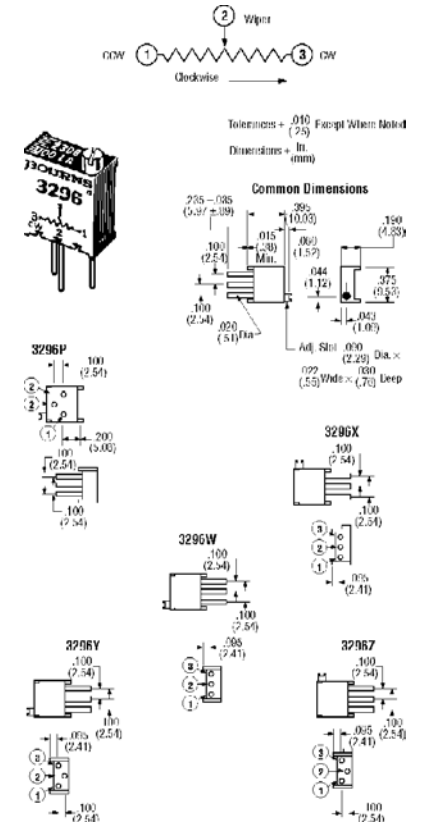
Model 3266 12-Turn/Cermet



Low cost 1/4" square multi-turn trimmer. Sealed to withstand wave soldering and boardwash process. Infinite resolution. 1/4 watt power at 70° C. **Low Temperature Coefficient:** ± 100 PPM/ $^{\circ}$ C. **Temperature Range:** -55° C to $+125^{\circ}$ C. 12 turn nominal travel. **Suffix:** W=Vertical Mount; X=Offset Vertical Mount. **Dimensions:** $1/4$ " square $\times 0.170$ ". **Weight:** 0.015 oz.

Stock No.	Mr.'s Type	Ohms	EACH					Stock No.	Mr.'s Type	Ohms	EACH				
			1-9	10-24	25-49	50-99	100-249				1-9	10-24	25-49	50-99	100-249
754-2162	3266W	50	3.04	2.83	2.60	2.49	2.36	754-2224	3266X	5K	3.04	2.83	2.60	2.49	2.36
754-2172	3266W	100	3.04	2.83	2.60	2.49	2.36	754-2232	3266W	10K	3.04	2.83	2.60	2.49	2.36
754-2174	3266X	100	3.04	2.83	2.60	2.49	2.36	754-2234	3266X	10K	3.04	2.83	2.60	2.49	2.36
754-2182	3266W	200	3.04	2.83	2.60	2.49	2.36	754-2242	3266W	20K	3.04	2.83	2.60	2.49	2.36
754-2192	3266W	500	3.04	2.83	2.60	2.49	2.36	754-2244	3266X	20K	3.04	2.83	2.60	2.49	2.36
754-2194	3266X	500	3.04	2.83	2.60	2.49	2.36	754-2252	3266W	50K	3.04	2.83	2.60	2.49	2.36
754-2202	3266W	1K	3.04	2.83	2.60	2.49	2.36	754-2254	3266X	50K	3.04	3.08	2.83	2.71	2.57
754-2204	3266X	1K	4.82	4.40	4.03	3.86	3.66	754-2262	3266W	100K	3.04	2.83	2.60	2.49	2.36
754-2212	3266W	2K	3.04	2.83	2.60	2.49	2.36	754-2264	3266X	100K	3.04	2.83	2.60	2.49	2.36
754-2214	3266X	2K	3.04	2.83	2.60	2.49	2.36	754-2272	3266W	1M	3.04	2.83	2.60	2.49	2.36
754-2222	3266W	5K	3.04	2.83	2.60	2.49	2.36								

Model 3296 25-Turn/Cermet



Listed on DESC QPL for style RJ24 per MIL-R-22097 and style RJR24 per MIL-R-39035. Thin body profile, low cost square multi-turn trimmer with infinite resolution. Wiper idling mechanism clicks at end of rotation. Sealed to withstand wave soldering and boardwash process. 0.5 watt at 70° C. $\pm 10\%$ tolerance. **Temperature Range:** -55° C to $+125^{\circ}$ C. **Suffix:** P=Offset PC pins, W=Vertical Mount; X=In-line Vertical Mount; Y=Offset PC pins, Z=Offset PC pins. **Dimensions:** $3/8$ " square $\times 0.19$ " thick. **Weight:** .03 oz.

Stock No.	Mr.'s Type	Ohms	EACH				
			1-9	10-24	25-49	50-99	100-249
754-3101	3296P	500	2.37	2.12	1.95	1.89	1.81
754-3102	3296W	500	2.20	2.00	1.81	1.75	1.68
754-3103	3296Y	500	2.20	2.00	1.81	1.75	1.68
754-3104	3296X	500	2.20	2.00	1.81	1.75	1.68
754-3111	3296P	1K	2.37	2.12	1.95	1.89	1.81
754-3112	3296W	1K	2.20	2.00	1.81	1.75	1.68
754-3113	3296Y	1K	2.20	2.00	1.81	1.75	1.68
754-3114	3296X	1K	2.20	2.00	1.81	1.75	1.68
754-3115	3296Z	1K	2.37	2.12	1.95	1.89	1.81
754-3121	3296P	2K	2.37	2.12	1.95	1.89	1.81
754-3122	3296W	2K	2.20	2.00	1.81	1.75	1.68
754-3123	3296Y	2K	2.20	2.00	1.81	1.75	1.68
754-3124	3296X	2K	2.20	2.00	1.81	1.75	1.68
754-3125	3296Z	2K	2.37	2.12	1.95	1.89	1.81
754-3131	3296P	5K	2.42	2.16	1.99	1.93	1.85
754-3132	3296W	5K	2.20	2.00	1.81	1.75	1.68
754-3133	3296Y	5K	2.20	2.00	1.81	1.75	1.68
754-3134	3296X	5K	2.20	2.00	1.81	1.75	1.68
754-3135	3296Z	5K	2.39	2.14	1.97	1.91	1.83
754-3141	3296P	10K	2.37	2.12	1.95	1.89	1.81
754-3142	3296W	10K	2.20	2.00	1.81	1.75	1.68
754-3143	3296Y	10K	2.20	2.00	1.81	1.75	1.68
754-3144	3296X	10K	1.50	1.36	1.24	1.20	1.15
754-3145	3296Z	10K	2.37	2.12	1.95	1.89	1.81
754-3151	3296P	20K	2.37	2.12	1.95	1.89	1.81
754-3152	3296W	20K	2.20	2.00	1.81	1.75	1.68
754-3153	3296Y	20K	2.20	2.00	1.81	1.75	1.68
754-3154	3296X	20K	2.20	2.00	1.81	1.75	1.68
754-3155	3296Z	20K	2.37	2.12	1.95	1.89	1.81
754-3161	3296P	50K	2.37	2.12	1.95	1.89	1.81
754-3162	3296W	50K	2.20	2.00	1.81	1.75	1.68
754-3163	3296Y	50K	2.20	2.00	1.81	1.75	1.68
754-3164	3296X	50K	2.20	2.00	1.81	1.75	1.68
754-3165	3296Z	50K	2.37	2.12	1.95	1.89	1.81
754-3171	3296P	100K	2.37	2.12	1.95	1.89	1.81
754-3172	3296W	100K	2.20	2.00	1.81	1.75	1.68
754-3173	3296Y	100K	2.20	2.00	1.81	1.75	1.68
754-3174	3296X	100K	2.20	2.00	1.81	1.75	1.68
754-3175	3296Z	100K	2.37	2.12	1.95	1.89	1.81