

PART NUMBER CODING

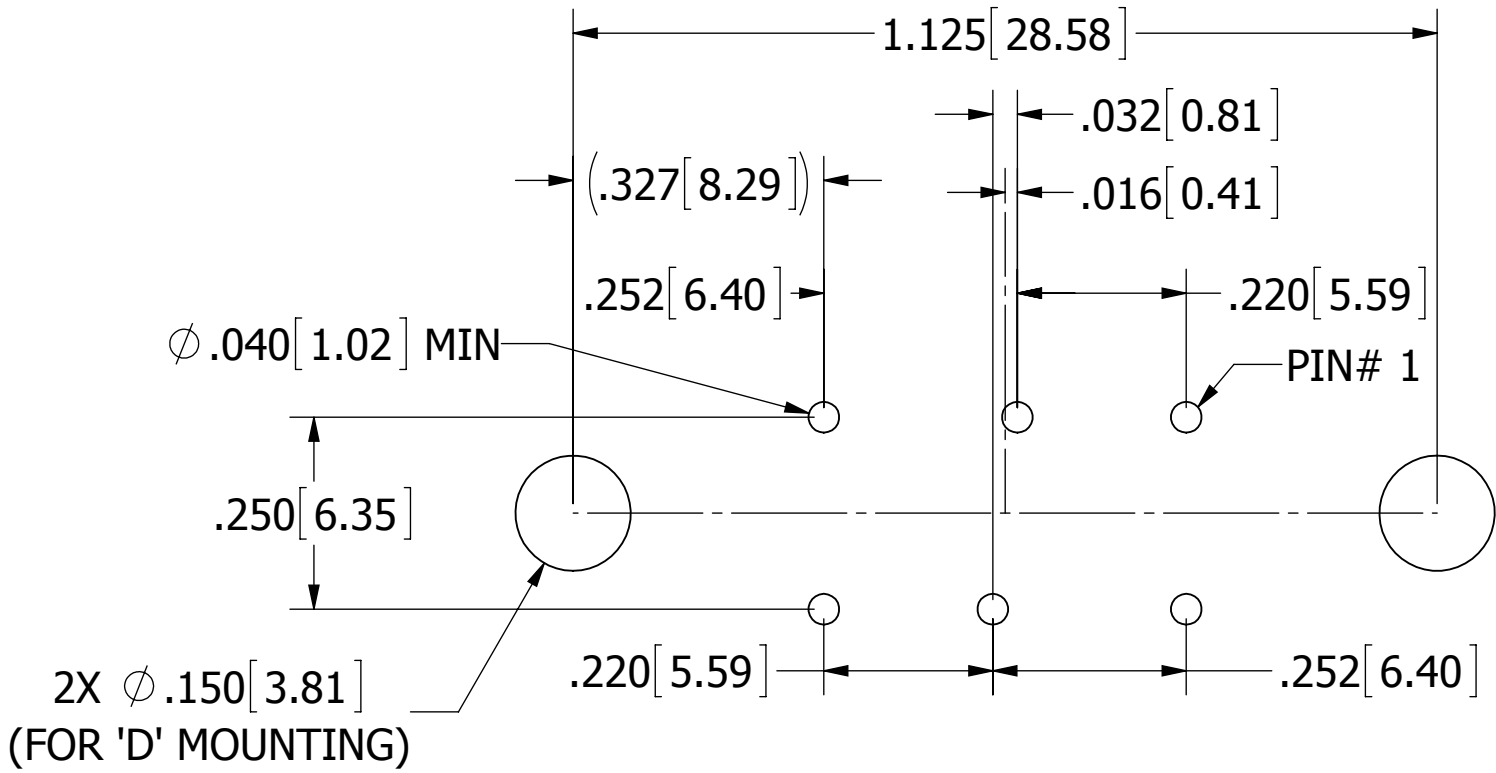
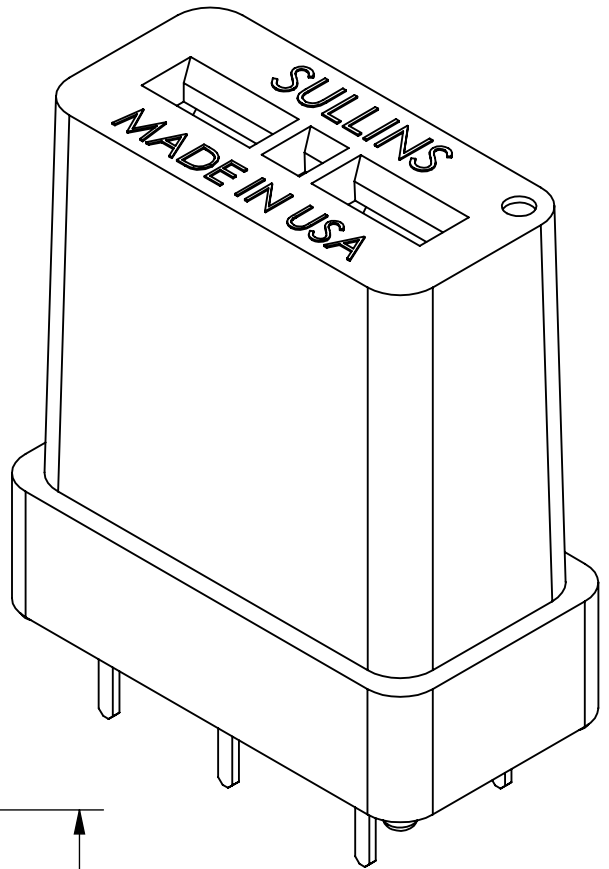
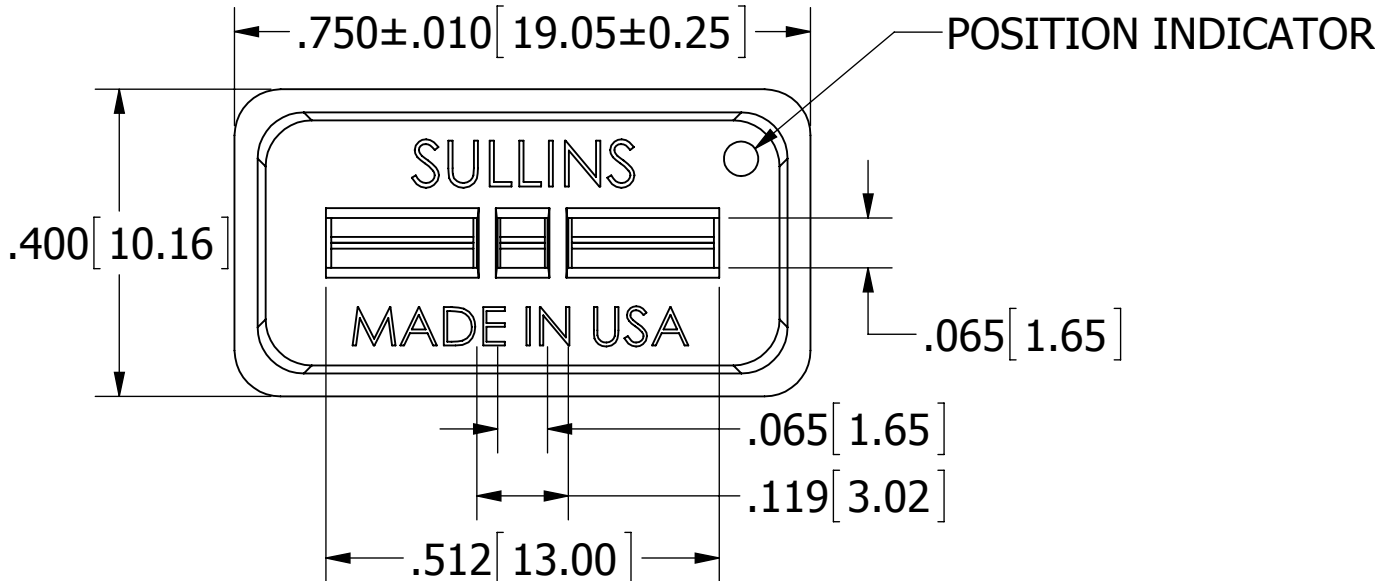
T_U03DTO

MOUNTING STYLE
N= NO MOUNTING EAR
D= FLUSH MOUNTING (PAGE 2)

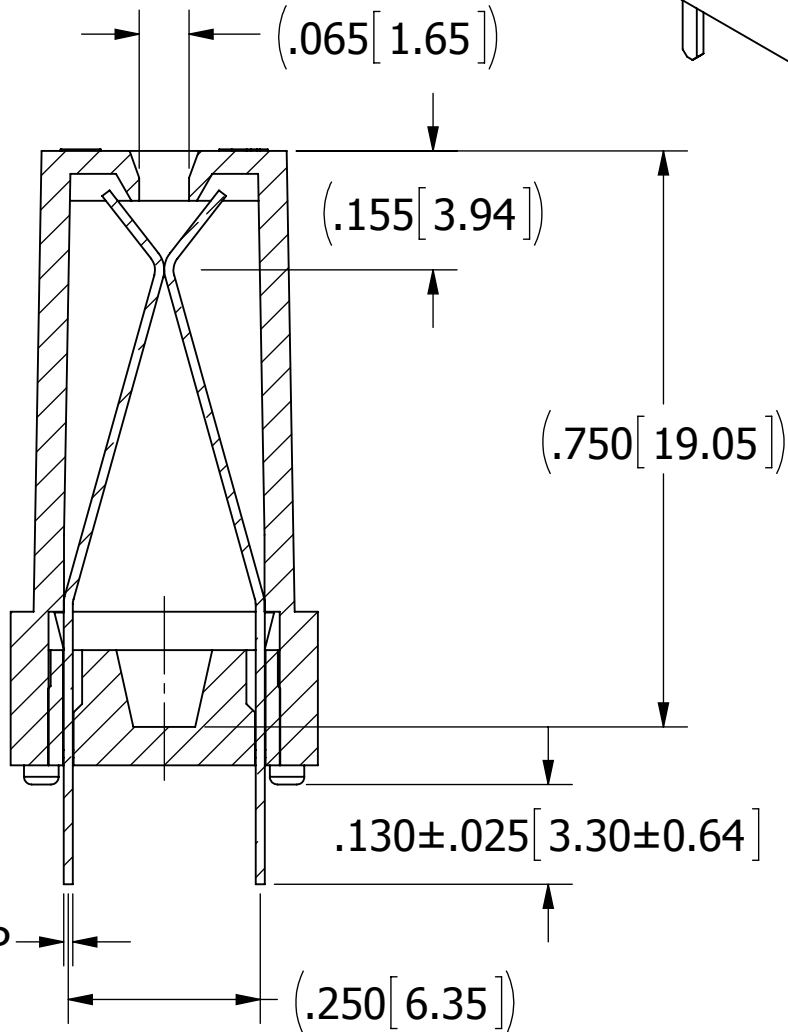
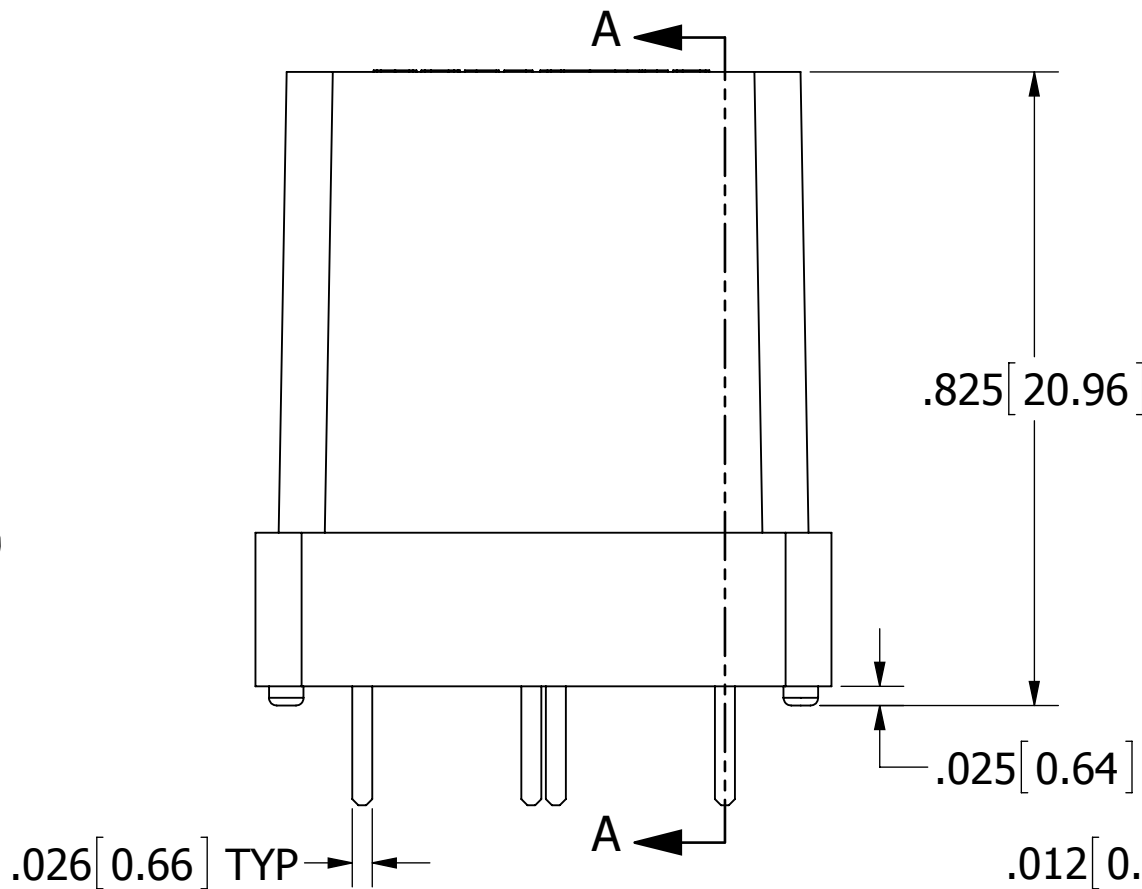
PLATING

ALL PLATINGS HAVE .000050" NICKEL UNDERPLATE
S = .000010" GOLD OVERALL
D = .000030" GOLD OVERALL

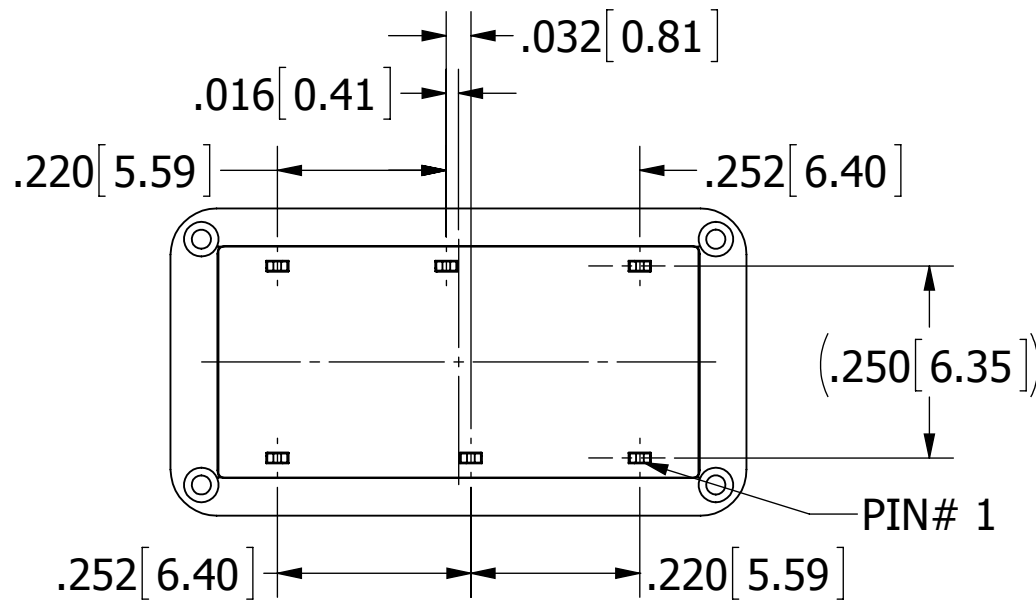
REVISIONS				
REV.	ECO. NO	DESCRIPTION	DATE	BY
A	2747	INITIAL RELEASE	4/16/2013	JH
B	2825	UPDATE CURRENT RATING PER TESTING	8/22/2013	KV



PCB LAYOUT RECOMMENDED
(COMPONENT SIDE)



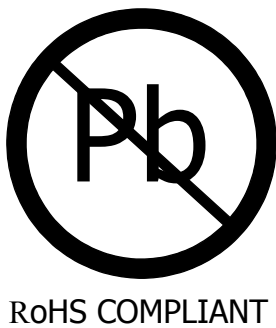
SECTION A-A



T_U03DTON

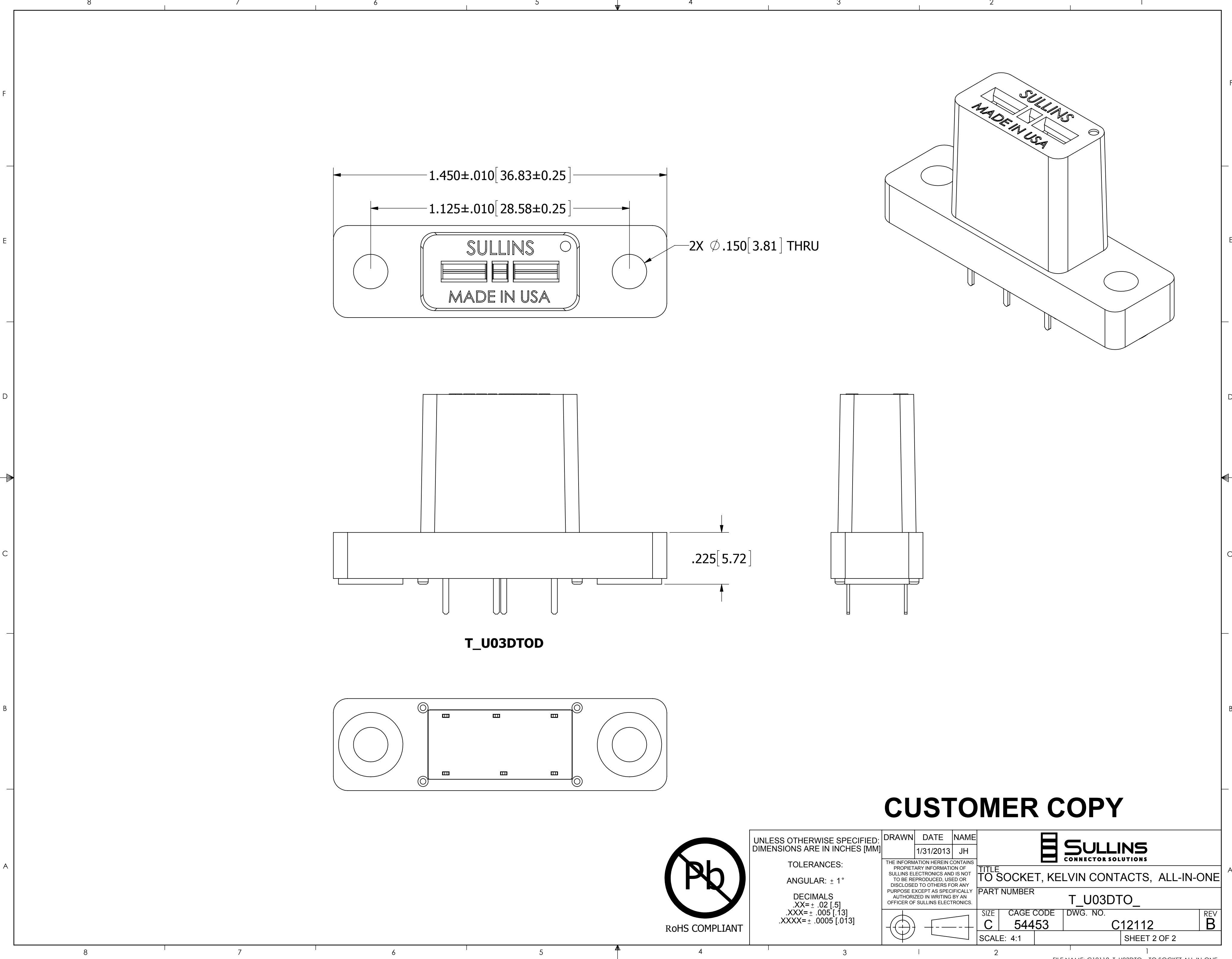
NOTES:

1. INSULATOR MATERIAL: PPS
2. CONTACT MATERIAL: BERYLLIUM COPPER
3. PLATING: SEE PART NUMBER CODING
4. OPERATING TEMPERATURE: -55 °C TO +175 °C
5. PROCESSING TEMP: 260 °C FOR 10 SECONDS MAX
6. UL FLAMMABILITY RATING: 94V-0
7. OPERATING VOLTAGE: 700 VAC MINIMUM AT SEA LEVEL
8. CURRENT RATING: 5 AMP
9. CONTACT RESISTANCE: 30 MILLI OHMS MAX
10. INSULATION RESISTANCE: 5000 MEGA OHMS
11. DURABILITY: 500 CYCLES MIN
12. CONNECTOR IDENTIFICATION: THE PART SHALL BE MARKED WITH A PART NUMBER AND LOT CODE
13. ACCEPTS IN-LINE DEVICES UP TO 3 LEADS INCLUDING TO-3, TO-66, TO-247, TO-220, TO-258, TO-254, TO-257, TO-262 AND TO264
14. LEAD SIZE ACCOMMODATED: .010[0.25] - .060[1.52] THICK BY .060[1.52] WIDE MAX.

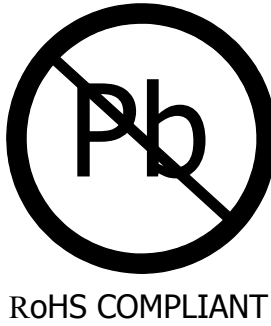



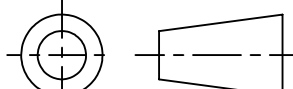
CUSTOMER COPY

UNLESS OTHERWISE SPECIFIED: DIMENSIONS ARE IN INCHES [MM]		DRAWN	DATE	NAME		
TOLERANCES: ANGULAR: ± 1° DECIMALS .XX= ± .02 [.5] .XXX= ± .005 [.13] .XXXX= ± .0005 [.013]			1/31/2013	JH		
THE INFORMATION HEREIN CONTAINS PROPRIETARY INFORMATION OF SULLINS ELECTRONICS AND IS NOT TO BE REPRODUCED, USED OR DISCLOSED TO OTHERS FOR ANY PURPOSE EXCEPT AS SPECIFICALLY AUTHORIZED IN WRITING BY AN OFFICER OF SULLINS ELECTRONICS.		TITLE TO SOCKET, KELVIN CONTACTS, ALL-IN-ONE			PART NUMBER T_U03DTO_	
		SIZE C	CAGE CODE 54453	DWG. NO. C12112	REV B	
SCALE: 4:1		SHEET 1 OF 2				



CUSTOMER COPY



UNLESS OTHERWISE SPECIFIED: DIMENSIONS ARE IN INCHES [MM]		DRAWN	DATE	NAME		
			1/31/2013	JH		
TOLERANCES: ANGULAR: ± 1° DECIMALS .XX=± .02 [.5] .XXX=± .005 [.13] .XXXX=± .0005 [.013]		THE INFORMATION HEREIN CONTAINS PROPRIETARY INFORMATION OF SULLINS ELECTRONICS AND IS NOT TO BE REPRODUCED, USED OR DISCLOSED TO OTHERS FOR ANY PURPOSE EXCEPT AS SPECIFICALLY AUTHORIZED IN WRITING BY AN OFFICER OF SULLINS ELECTRONICS.			TITLE TO SOCKET, KELVIN CONTACTS, ALL-IN-ONE	
					PART NUMBER T_U03DTO_	
				SIZE C	CAGE CODE 54453	REV B
		SCALE: 4:1			SHEET 2 OF 2	