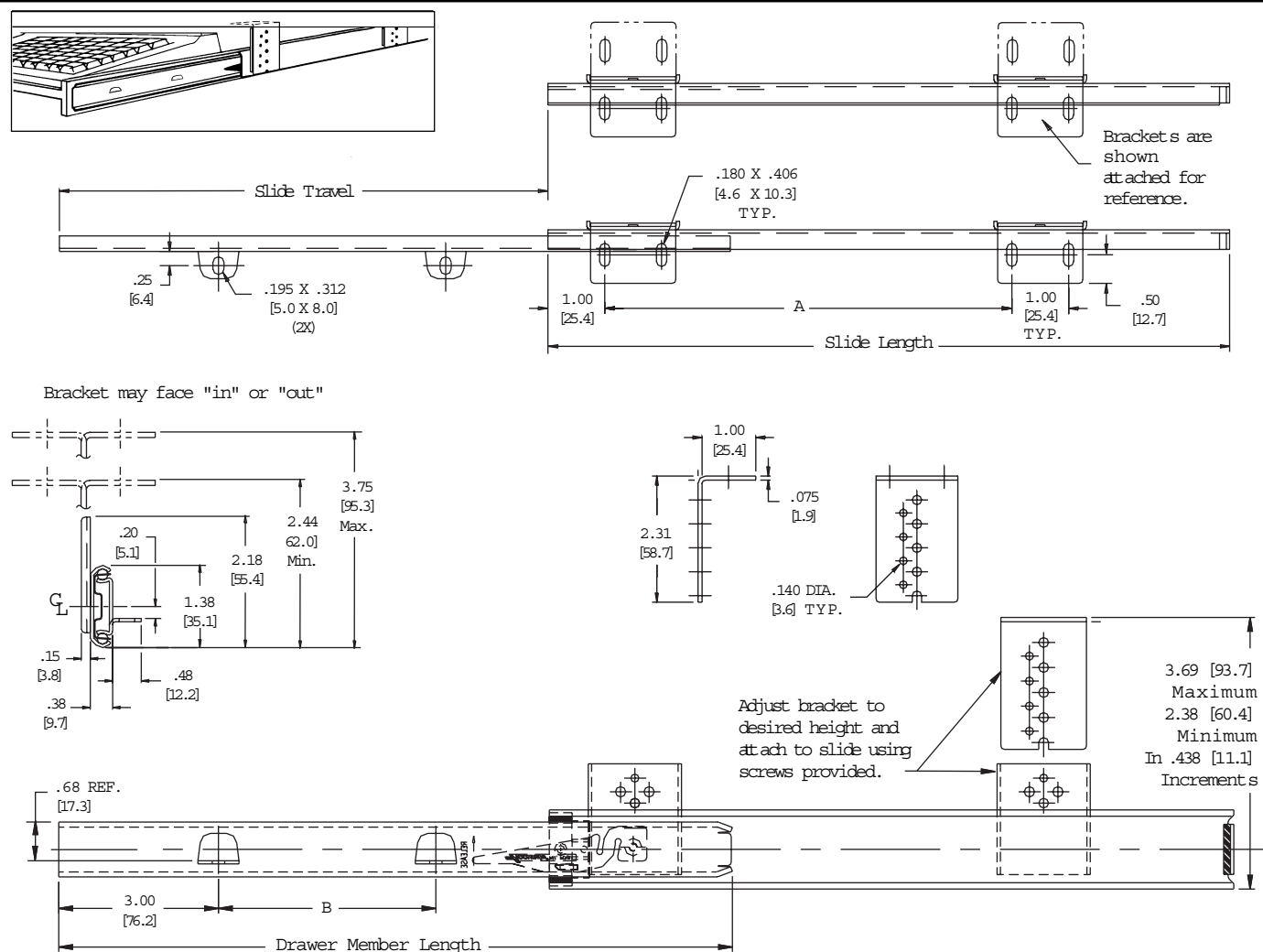


APPLICATIONS: Computer keyboards, typewriter and writing shelves, and pencil drawers. Anywhere an adjustable height shelf or shallow drawer is suspended over or under a work surface with shelf/drawer mounted on inner member tabs. This product is covered by U.S. (6,145,945) and various foreign patents issued and/or pending.

Variable Height Keyboard Slide
Shelf Mounting Tabs
75 lb. [34 kg.] Capacity*



Finish	Bright electro-zinc (C) or black zinc* (B) plating available
Length	12" to 28" [305mm to 711mm]
Travel	3/4 Extension
Load	75 lbs. [34 kg.] per pair*
Movement	Steel ball bearings
Brackets	Variable height, inboard/outboard
Mounting	Mounting tabs
Features	Detent in the open position, lever disconnect, silenced in-stops
Hand	Left hand shown, right hand opposite

* Minimum order quantities may apply
* Load rating based on an 18" slide on a 16" wide drawer cycled 50,000 times.

Part Number	Slide Length	Slide Travel	Drawer Member Length	A	B
2019-12	12.00 [304.8]	9.00 [228.6]	11.81 [300.0]	8.50 [216.9]	4.00 [101.6]
2019-14	14.00 [355.6]	11.00 [279.4]	13.81 [350.7]	8.50 [216.9]	6.00 [152.4]
2019-16	16.00 [406.4]	12.00 [304.8]	15.81 [401.6]	8.50 [216.9]	8.00 [203.2]
2019-18	18.00 [457.2]	13.50 [342.9]	17.81 [452.4]	8.50 [216.9]	9.00 [228.6]
2019-20	20.00 [508.0]	15.00 [381.0]	19.81 [503.2]	8.50 [216.9]	10.50 [266.7]
2019-22	22.00 [558.8]	16.50 [419.1]	21.81 [554.0]	16.50 [419.1]	12.00 [304.8]
2019-24	24.00 [609.6]	17.50 [444.5]	23.81 [604.8]	16.50 [419.1]	13.00 [330.2]
2019-26	26.00 [660.4]	19.00 [482.6]	25.81 [655.6]	16.50 [419.1]	14.00 [355.6]
2019-28	28.00 [711.2]	20.00 [508.0]	27.81 [706.4]	16.50 [419.1]	15.00 [381.0]

Drawer Member

1. Separate slide members by depressing the lever release.
2. Mount shelf/drawer on the inner member tabs using #8 wood screws. See Figure 1.

Cabinet Member

1. Attach brackets to slide at desired height (2-3/8" [60.4mm] minimum to 3-11/16" [93.7mm] maximum) and position (inboard/outboard) using self-tapping screws. Cabinet member to be mounted parallel to drawer sides.
2. Locate screw holes for mounting brackets on the underside of desk top (or equivalent mounting surface). See "A" on chart on front page for dimensions. Reference Figure 3.

NOTE: Mounting bracket adjusts vertically in 7/16" [11.1mm] increments

For Brackets Facing Out

Use the width of the drawer plus 2-1/32" [51.6mm] for bracket screw hole centers. See Figure 2.

For Brackets Facing In

Use the width of the drawer minus 1/8" [3.2mm] for bracket screw hole centers. See Figure 2.

NOTE: Tighten bracket screws on one side, then open and close (cycle) drawer a few times to be certain the slides have self-adjusted to a parallel position and are moving freely. Tighten bracket screws on other side.

3. Adjust height of drawer and install remaining screws in moving member.

Slide Ordering Instructions

Complete your slide order for Accuride Model 2019 by specifying the following:

	10 Pair	C	2019	-16	D
Total Slides Required	_____	_____	_____	_____	_____
Slide Finish	_____	_____	_____	_____	_____
Slide Model	_____	_____	_____	_____	_____
Slide Length	_____	_____	_____	_____	_____
Polybag Packaging - (includes bracket kit)	_____	_____	_____	_____	_____

Packaging

Distributor (D) Pack: All lengths are packaged 10 pair per box. Polybag contains 1 pair of slides and 1 mounting bracket kit. Zinc finish slides include zinc finish brackets. Black finish slides include black finish brackets.

Bulk Pack: Lengths 12" to 20" are packaged 15 pair per box. Lengths 22" - 28" are packaged 10 pair per box. Slides and mounting bracket kits are ordered and packaged separately. Order 1 kit per pair of slides ordered.

Mounting Bracket Kit

For slides ordered in bulk, mounting bracket kits are ordered separate. Bracket kits are available in zinc and black finish. Order one kit for each pair of slides.

For zinc finish brackets order kit number 4180-0255-XE.

For black finish brackets order kit number 4180-0257-XE. Each kit contains 4 brackets, bracket mounting screws, and slide mounting screws.

Specifications

Slide members: Cold rolled steel

Ball retainers: Cold rolled steel

Ball bearings: Carburized steel

Note: Specifications, materials, prices, terms, and delivery are subject to change without notice.

Copyright © 2002 Accuride International Inc. Printed in U.S.A. 3700-1077(9437)-MK523-RI-1102

Figure 1

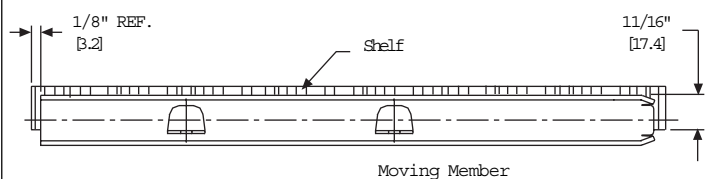


Figure 2

Mounting Hole Centerlines, Front Elevation

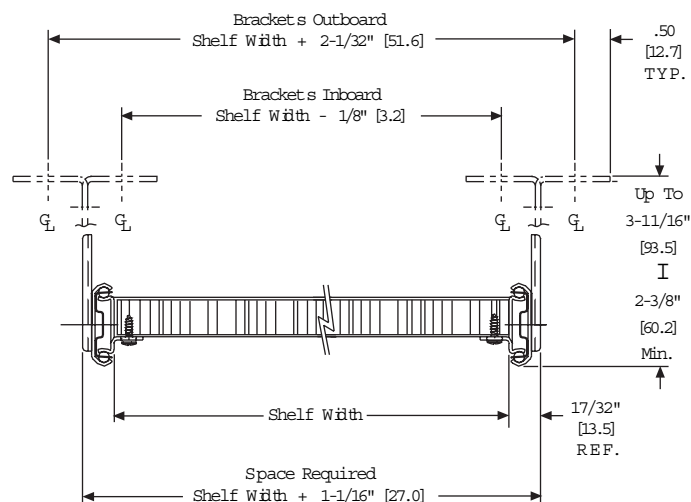
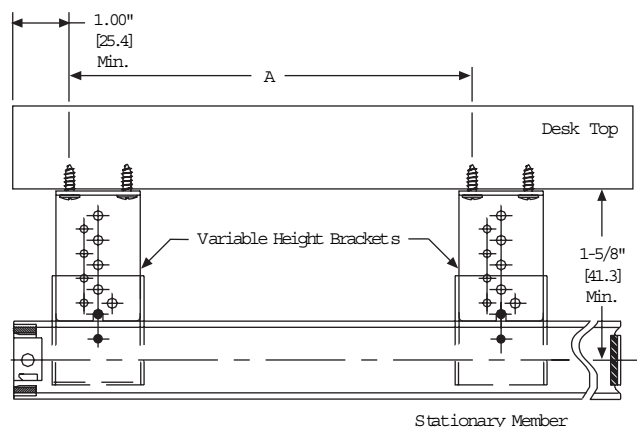


Figure 3



Accuride

ACCURIDE INTERNATIONAL INC.

12311 Shoemaker Avenue
Santa Fe Springs, CA 90670

TEL (562) 903-0200

FAX (562) 903-0208

www.accuride.com

Manufacturing, Engineering, and Sales

United States • Germany • Japan • Mexico • United Kingdom

Copyright © 2002 Accuride International Inc. Printed in U.S.A. 3700-9437(1077)-MK048-RI-1102