

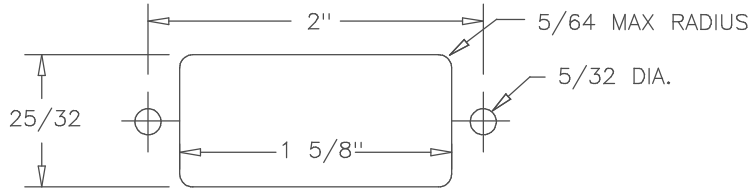
SPECIFICATIONS

RESISTANCE -----1K,5K,10K,20K ±15%
LINEARITY (INDEPENDENT)-----±3%
POWER RATING-----0.1 WATTS
ELECTRICAL ANGLE-----30°±5°
MECHANICAL ANGLE-----±15° ~ ±19°
CENTER RETURN ACCURACY-----50% ±3%
RESOLUTION-----ESSENTIALLY INFINITE
MAX. WIPER OUTPUT-----1 mA RECOMMENDED, 5mA MAX.
OUTPUT SMOOTHNESS-----BELOW 0.2% AGAINST INPUT VOLTAGE
CONTACT RESISTANCE VARIATION-----BELOW 5% C.R.V.
INSULATION RESISTANCE-----1000MEGOHMS @ 500VDC MIN.
DIELECTRIC STRENGTH-----1 MINUTE AT 500 VAC
STARTING TORQUE-----.15 OZ. IN. ~ .18 OZ. IN.
WIPER CURRENT-----BELOW 10 uA
WEIGHT-----APPROX. 0.7 OZ.
OPERATING TEMPERATURE----- -20°C TO +65°C
STOPPER STRENGTH ----- OVER 0.03 OZ. IN.
VIBRATION ----- 10 - 55 Hz, 10G.
SHOCK ----- 30G.
LIFE EXPECTANCY ----- APPROX. 2,000,000 OPERATIONS.

MATERIALS

HOUSING-----HIGH TEMP. THERMO PLASTIC
TERMINALS-----GOLD PLATED BRASS
RESISTANCE ELEMENT-----CONDUCTIVE PLASTIC

SUGGESTED PANEL LAYOUT



20K	YES	TO CENTER	J3R-IT-20K
1K	YES	TO CENTER	J3R-IT-1K
1K	NO	TO TERMINAL #1	J3R-E-1K
10K	NO	TO CENTER	J3R-I-10K
5K	NO	TO CENTER	J3R-I-5K
10K	NO	TO TERMINAL #1	J3R-E-10K
5K	NO	TO TERMINAL #1	J3R-E-5K
5K	YES	TO CENTER	J3R-IT-5K
10K	YES	TO CENTER	J3R-IT-10K
RESISTANCE	CENTER TAP	POSITION SPRING RETURNS ROCKER	MODEL

TOLERANCES
XX = +/- .010" FRACT. = +/- 1/64"
XXX = +/- .005" ANGLES = +/- 1/2"
ALL SPECIFICATIONS SUBJECT TO CHANGE WITHOUT NOTICE.

USED ON

SCALE	DATE: 3-6-96
	BY
	APPR'D BT
CODE IDENT: 19477	

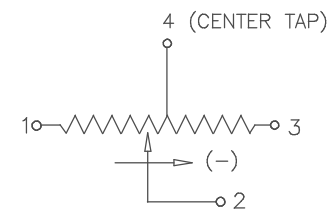
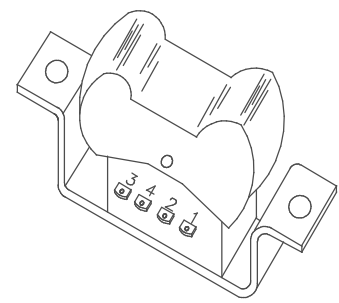
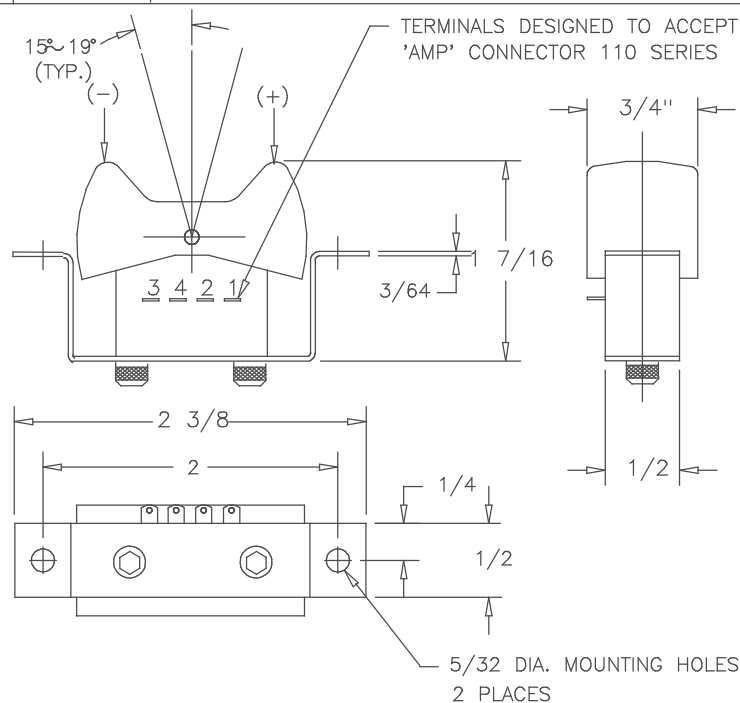


ETI
SYSTEMS
CARLSBAD
CALIFORNIA

TITLE
ROCKER POT

PART NO.
J3R

REV.	BY	DATE	P/N J3R
I	AT	11-13-02	ADDED J3R-IT-1K



SCHEMATIC

Mouser Electronics

Authorized Distributor

Click to View Pricing, Inventory, Delivery & Lifecycle Information:

[ETI Systems:](#)

[J3R-I-5K](#)