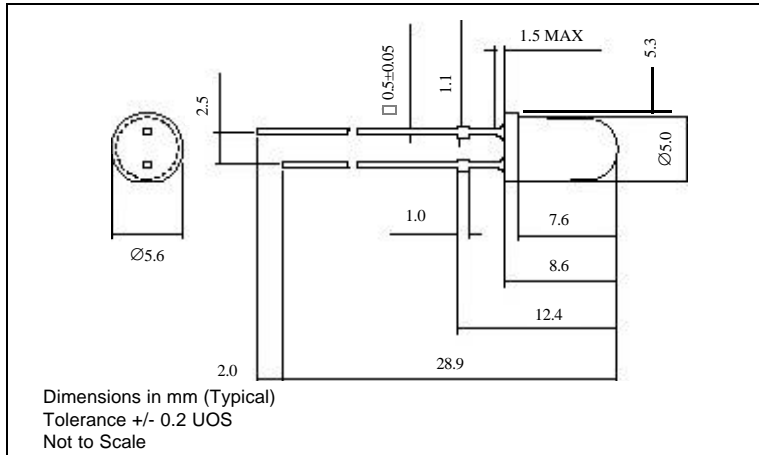
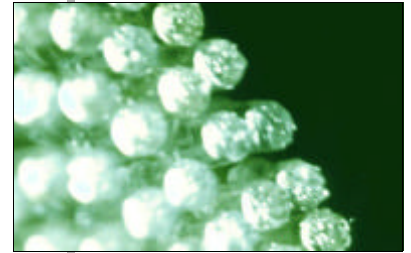


● DISCRETE LEDs - Ø 5mm Green



- High luminous intensity
- Also available as a 3mm device and in SMT format
- Solid state reliability
- Wider viewing angle version available



110104 SERIES

MLQ = 50

**Ordering Information & Typical Technical Characteristics (Ta = 25°C)**

Mean Time Between Failure = 100,000 Hours. \* Duty Cycle <= 1/10, Pulse Width <= 10msec

| PART NUMBER | COLOUR | TYP. FWD VOLTAGE<br>V <sub>f</sub> @ I <sub>opr</sub> | MAX FWD VOLTAGE<br>V <sub>f</sub> @ I <sub>opr</sub> | FORWARD CURRENT<br>I <sub>opr</sub> | MAX REV CURRENT<br>I <sub>r</sub> (V <sub>r</sub> =5V) | LUMINOUS INTENSITY<br>I <sub>v</sub> @I <sub>opr</sub> | CHROMATICITY COORDINATES | VIEWING ANGLE<br>2θ <sub>1/2</sub> |
|-------------|--------|---|--|-------------------------------------|--|--|--------------------------|------------------------------------|
|-------------|--------|---|--|-------------------------------------|--|--|--------------------------|------------------------------------|

**OPTICAL / ELECTRICAL CHARACTERISTICS (T<sub>a</sub> = 25°C)**

|        |             |     |     |    |    |        |              |     |
|--------|-------------|-----|-----|----|----|--------|--------------|-----|
| 110104 | Green       | 3.5 | 4.0 | 20 | 50 | 10,000 | 0.17 / 0.700 | 15  |
| UNITS  | Water Clear | V   | V   | mA | μA | mcd    | x / y        | deg |

| PART NUMBER | COLOUR | FORWARD CURRENT<br>I <sub>opr</sub> max | PEAK FWD CURRENT<br>I <sub>fp</sub> * | REVERSE VOLTAGE<br>V <sub>r</sub> max | POWER DISSIPATION<br>P <sub>d</sub> max | PEAK WAVELENGTH<br>Typ. λ <sub>p</sub> | OPERATING TEMP<br>T <sub>opr</sub> | STORAGE TEMP<br>T <sub>stg</sub> |
|-------------|--------|---|---------------------------------------|---------------------------------------|---|--|------------------------------------|----------------------------------|
|-------------|--------|---|---------------------------------------|---------------------------------------|---|--|------------------------------------|----------------------------------|

**ABSOLUTE MAXIMUM RATINGS (T<sub>a</sub> = 25°C)**

|        |             |    |     |     |     |     |            |             |
|--------|-------------|----|-----|-----|-----|-----|------------|-------------|
| 110104 | Green       | 30 | 100 | 5   | 120 | 525 | -30 to +85 | -40 to +100 |
| UNITS  | Water Clear | mA | mA  | Vdc | mW  | nm  | °C         | °C          |

**PRECAUTIONS FOR HANDLING ELECTROSTATIC SENSITIVE LEDs**

**Static Electricity and Surge**

Static electricity and surge will damage the LED and a high standard of care must be taken during handling. It is recommended that a wristband, conductive mat or anti-electrostatic glove is used when handling the LEDs. All devices, equipment (e.g. soldering iron points) and machinery must be properly grounded.

**SAFETY PRECAUTIONS FOR HANDLING HIGH BRIGHTNESS LEDs**

The light output of the Products may cause injuries to human eyes in circumstances where they are viewed directly with unshielded eyes for more than a few seconds.

Please refer to European Standard BSEN 100015-1 1992 for further information.

© Optosource 2000

● Datasheet Reference 35/98 Issue 03

**Optosource** • Fax: +44 (0)1229 580012 • email: sales@optosource.com • website: www.optosource.com • Telephone +44 (0)1229 484623

Optosource is a division of Marl International Limited, experts in LED technology since 1972.

The information contained in this datasheet does not constitute part of any order or contract and should not be regarded as a representation relating to either products or service. Marl International reserve the right to alter without notice the specification or any conditions of supply for products or service.