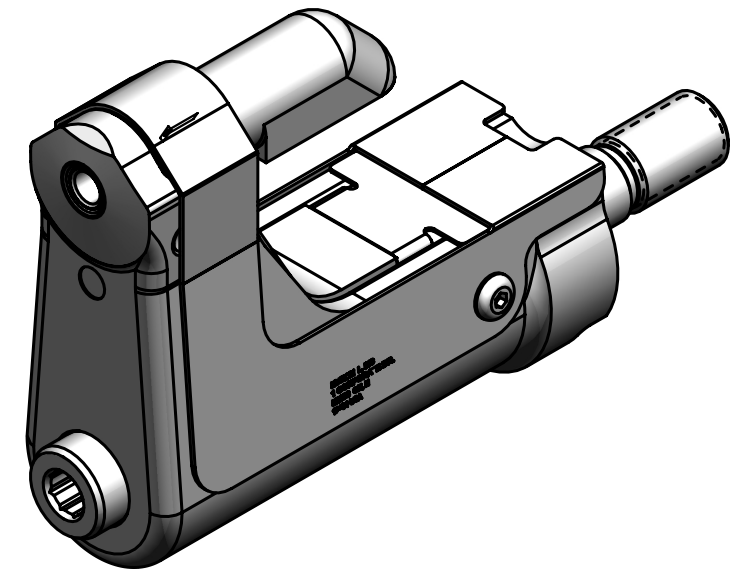


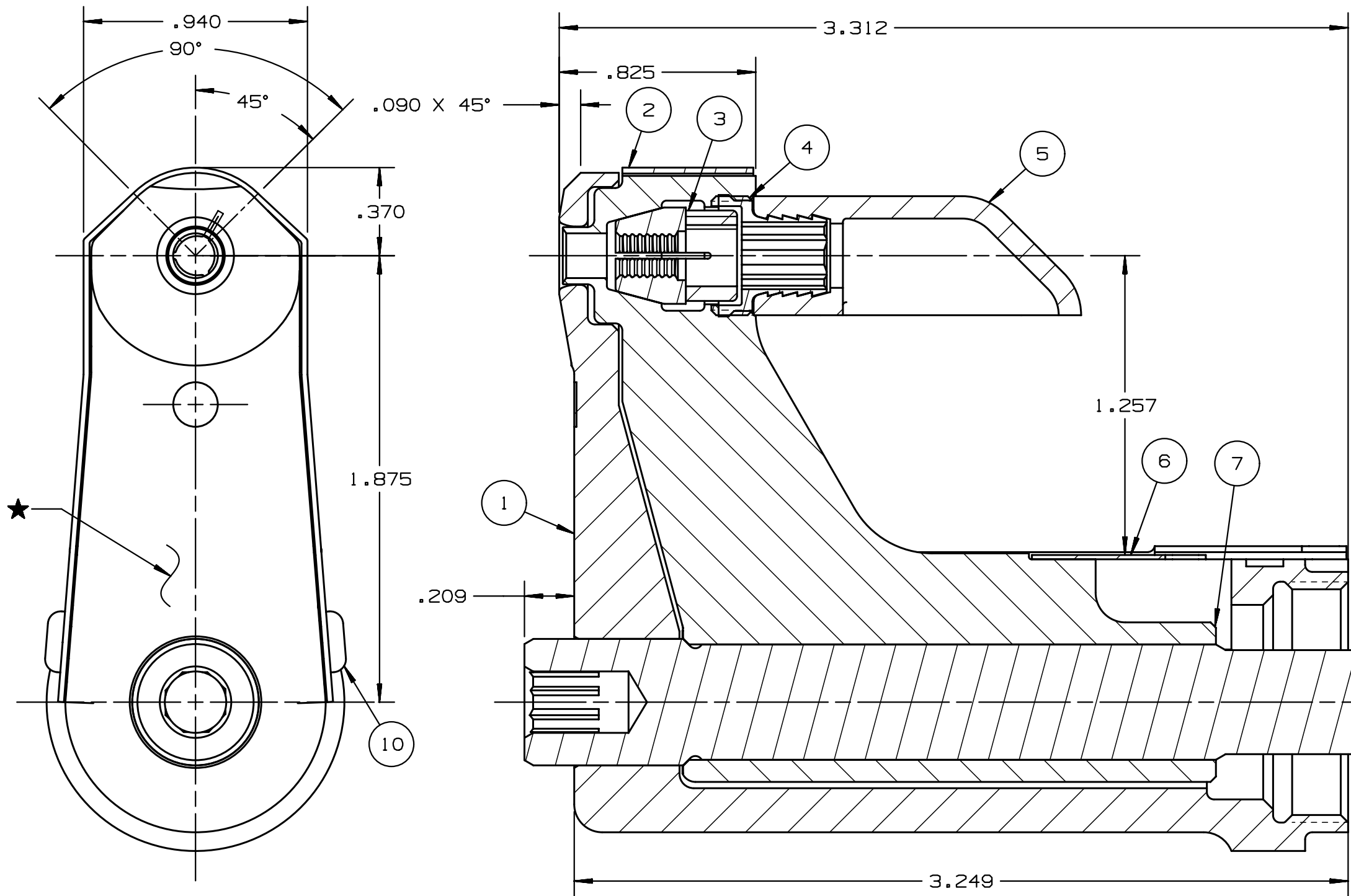
REV	DESCRIPTION	DET	DATE
E	ITEM 3, 130052 WAS 128071	EL	11/10/11
F	128497 WAS 128607; ADDED 128488	JJC	07/17/12
G	ADDED 508511, 130322-1 WAS 126746, 130326-1 WAS 126745	NDG	06/03/13



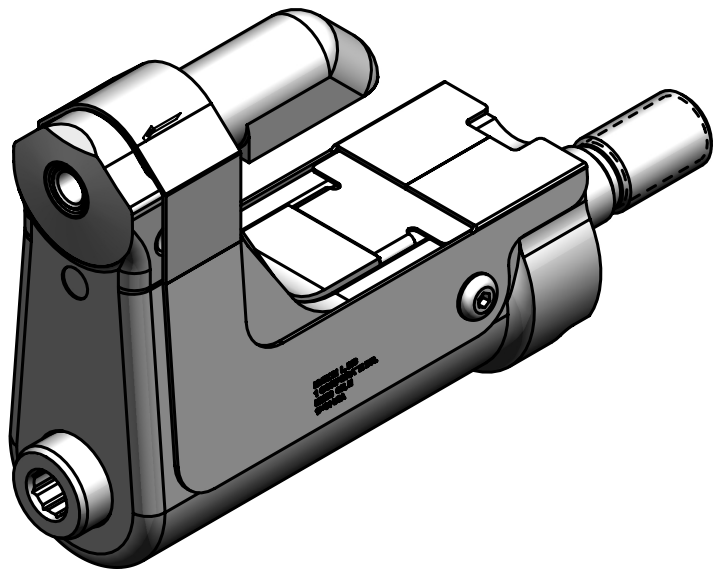
- NOTES:
- 1 MAXIMUM RECOMMENDED STROKE: .500
  - 2 FOR USE WITH THE 225/245 TOOL, USE ATTACHMENT P/N 119400-1 AND STROKE LIMITER 118362
  - 3 FOR USE WITH 2500 TOOL, USE ATTACHMENT P/N 119400-1 AND STROKE LIMITER KIT 119888
  - 4 FOR OTHER TOOLS AND/OR OTHER TOOL AND STROKE COMBINATIONS, CONSILT ENGINEERING DEPARTMENT
  - 5 SHIP WITH STOP 126747
  - 6 SHIP WITH DEFLECTOR 126748-1
  - 7 SHIP WITH (2) .030 SHIMS 128290 REFERENCE PB563 FOR PROPER USE

G	508511	2	#6-32 B.H.C.S.	10
	128488	1	DRAWBAR	9
	126748-1	1	UNITIZED DEFLECTOR	8
	128607	1	COLLET	7
G	130326-1	1	GUARD	6
	120095	1	DEFLECTOR	5
	122912	1	BARBED RETAINER	4
	130052	1	UNITIZED CHUCK JAWS	3
G	130322-1	1	TOP GUARD	2
	127038	1	ANVIL	1
	PART NO.	QTY	DESCRIPTION	ITEM

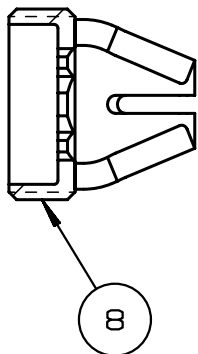
IDENTIFICATION PER SPEC 42-311: ★ ETCH	HUCK INTERNATIONAL, INC., I.S.D 1 CORPORATE DR KINGSTON, NEW YORK 12401		
ITAR/ECCN: EAR99	NOSE ASSEMBLY -06 LGP		
SCH B#: 8467.99.0190	FINAL ASSY: FOR USE WITH 206-375		
HTS: 8467.99.0190	ENG: MVM CK:	DATE: 2/21/02	SCALE: 2:1
	B	99-3701-1	



REV	DESCRIPTION	DET	DATE
E	ITEM 3, 130052 WAS 128071	EL	11/10/11
F	128497 WAS 128607; ADDED 128488	JJC	07/17/12
G	ADDED 508511, 130322-1 WAS 126746, 130326-1 WAS 126745	NDG	06/03/13



- NOTES:
- 1 MAXIMUM RECOMMENDED STROKE: .500
  - 2 FOR USE WITH THE 225/245 TOOL, USE ATTACHMENT P/N 119400-1 AND STROKE LIMITER 118362
  - 3 FOR USE WITH 2500 TOOL, USE ATTACHMENT P/N 119400-1 AND STROKE LIMITER KIT 119888
  - 4 FOR OTHER TOOLS AND/OR OTHER TOOL AND STROKE COMBINATIONS, CONSILT ENGINEERING DEPARTMENT
  - 5 SHIP WITH STOP 126747
  - 6 SHIP WITH DEFLECTOR 126748-1
  - 7 SHIP WITH (2) .030 SHIMS 128290 REFERENCE PB563 FOR PROPER USE



G	508511	2	#6-32 B.H.C.S.	10
	128488	1	DRAWBAR	9
	126748-1	1	UNITIZED DEFLECTOR	8
	128607	1	COLLET	7
G	130326-1	1	GUARD	6
	120095	1	DEFLECTOR	5
	122912	1	BARBED RETAINER	4
	130052	1	UNITIZED CHUCK JAWS	3
G	130322-1	1	TOP GUARD	2
	127038	1	ANVIL	1
	PART NO.	QTY	DESCRIPTION	ITEM

IDENTIFICATION PER SPEC 42-311: ★ ETCH	HUCK INTERNATIONAL, INC., I.S.D 1 CORPORATE DR KINGSTON, NEW YORK 12401		
ITAR/ECCN: EAR99	NOSE ASSEMBLY -06 LGP		
SCH B#: 8467.99.0190	FINAL ASSY: FOR USE WITH 206-375		
HTS: 8467.99.0190	ENG: MVM CK: B	DATE: 2/21/02	SCALE: 2:1
	99-3701-1		

