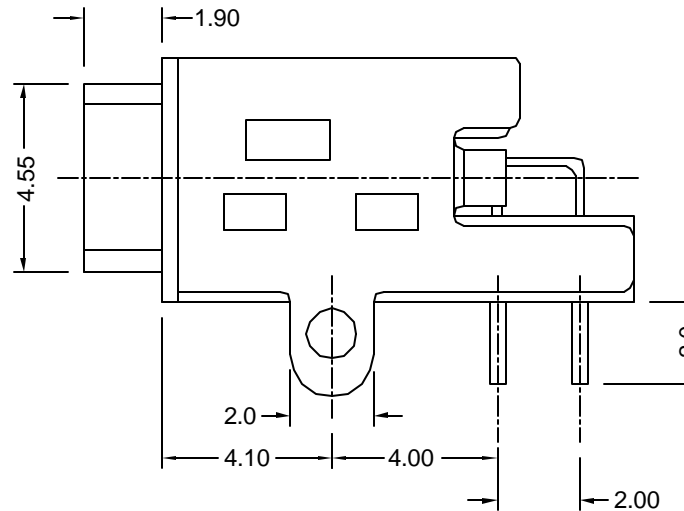
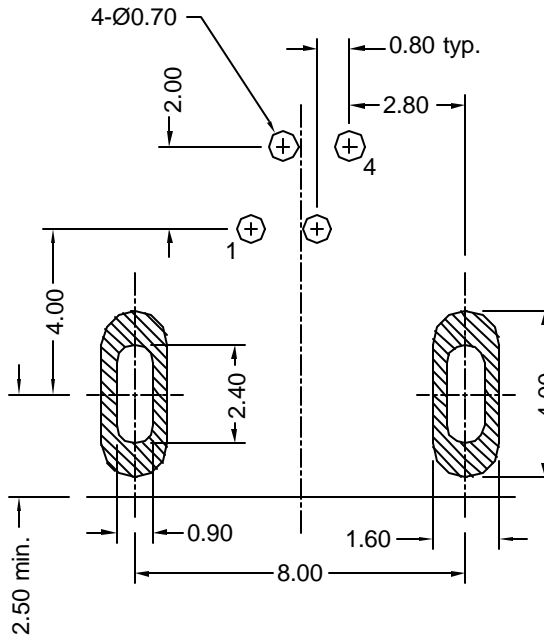


Recommended PCB Layout (top view)



Materials and Finish

Shell: Stell, Stainless Steel
Tin/Lead Plating

Insulator: UL94V-0 Rated
PBT Thermoplastic
Color- Black

Contacts: Phosphor Bronze
Plating- 0.76um (30u")
Gold on Contact Area,
3.8um (150u") Tin/Lead
on Solder Tail, all over
1.27um (50u") Nickel

Mechanical Specifications

Durability: >1000 cycles

Mating Force:
20 Newtons maximum

Withdrawal Force:
5 Newtons minimum

Electrical Specifications

Voltage Rating: 30VAC (rms)

Current Rating:
1A max. per contact not
to exceed 30°C Temp. rise

Dielectric Withstanding Voltage:
750VAC @ sea level

Capacitance:
2pF maximum

Contact Resistance:
less than 30 milliohms
per contact pair after
1500 mating cycles.

Insulation Resistance:
Greater than 100 Megohms

Operating Temperature:
-55°C to + 85°C



Tolerances	
X.X ± 0.25	
X.XX ± 0.15	
Unless Stated Otherwise	

REVISION	DATE	DESCRIPTION	DRAWN BY	CHECKED BY	UNITS
A0	8/13/01	New Drawing	M. Yiu		mm
A1	10/5/01	Add Specs	REVISED BY	APPROVED BY	DATE
A2	11/1/01	Ref ECD#01-209	M. Yiu	K. Wallace	8/13/01

KMFS-PR-200B-30

4-pin Firewire IEEE 1394a Socket

Right Angle, Black, 30u" Au, For 0.8mm PCBs



Mouser Electronics

Authorized Distributor

Click to View Pricing, Inventory, Delivery & Lifecycle Information:

[Kycon:](#)

[KMFS-PR-200B-30](#)