

1XE97

M

DRAWING
NUMBER

2

ISSUE

REPLACES

PR-20069

CHECK

CHECK

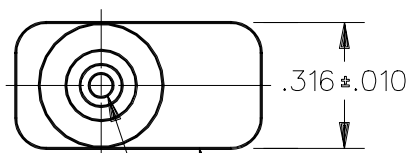
CHECK

T S M

11 MAY 92

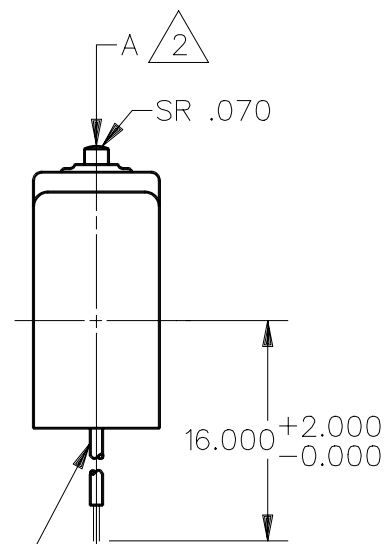
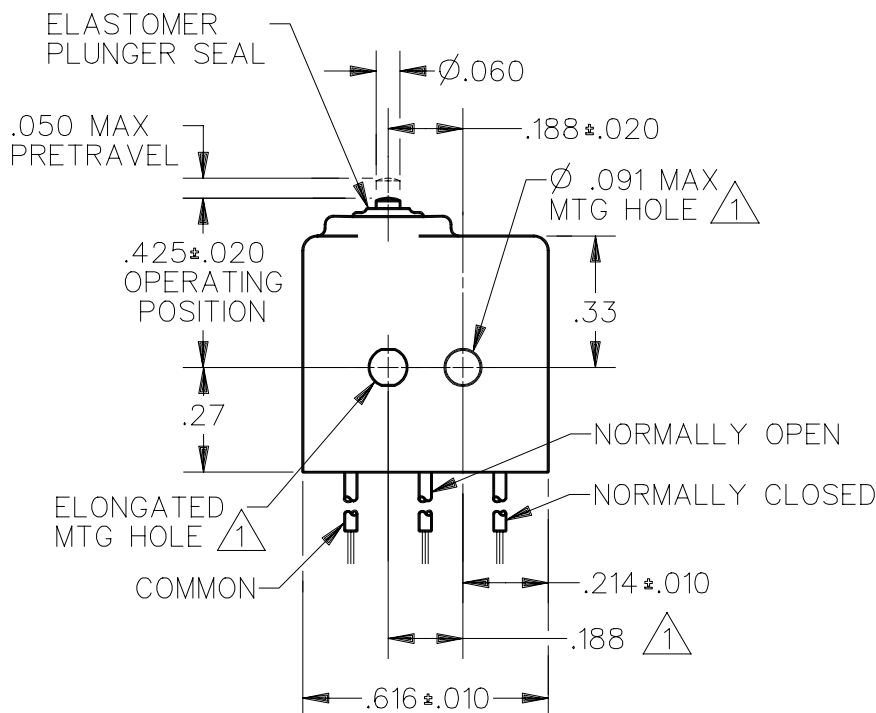
DDM/CAD

DRAWN



CORROSION RESISTANT TREATED
METAL ENCLOSURE

CORROSION RESISTANT
STEEL PLUNGER



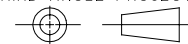
3X NO. 26 WIRE LEAD PER
M22759/11 EMBEDDED IN
EPOXY CASTING RESIN

NOTES

- 1 MOUNTING HOLES WILL ACCEPT .087 MAX DIA PINS OR SCREWS ON .188 ± .002 CENTERS
- 2 ACTUATION IN LINE WITH ARROW "A" IS RECOMMENDED
- 3 WEIGHT OF SWITCH ONLY IS .16 OZ MAX. WEIGHT OF SWITCH WITH WIRE LEADS IS .55 OZ MAX

THIS DRAWING COVERS A PROPRIETARY ITEM AND IS THE PROPERTY OF MICRO SWITCH, A DIVISION OF HONEYWELL. THIS DRAWING IS NOT TO BE COPIED OR USED WITHOUT THE APPROVAL OF MICRO SWITCH.

THIRD ANGLE PROJECTION



CHARACTERISTICS

OPERATING FORCE — — — — 5-17 OZ
RELEASE FORCE — — — — 4 OZ MIN
RELEASE TRAVEL — — — — .004 MIN
DIFFERENTIAL TRAVEL — — .005 MAX
OVERTRAVEL — — — — .004 MIN

ELECTRICAL DATA

CONTACT ARRANGEMENT
S P D T

28 VOLTS DC RATING
INDUCTIVE — — — SEA LEVEL — — — 4 AMP
50,000 FT — — — 2.5 AMP
RESISTIVE — — — SEA LEVEL — — — 7 AMP
50,000 FT — — — 7 AMP
115 VOLTS 400 CYCLES — — — SEA LEVEL
RESISTIVE — — — — — 7 AMP
INDUCTIVE — — — — — 4 AMP
LAMP — — — — — 1 AMP
MOTOR — — — — — 1.5 AMP

SCALE 2:1

DO NOT
SCALE PRINT

UNLESS OTHERWISE SPECIFIED
TOLERANCES ARE

ONE PLACE (.0) ± .030
TWO PLACE (.00) ± .015
THREE PLACE (.000) ± .005
ANGLES ±

WEIGHT 3

Mouser Electronics

Authorized Distributor

Click to View Pricing, Inventory, Delivery & Lifecycle Information:

[Honeywell:](#)

[1XE97](#)