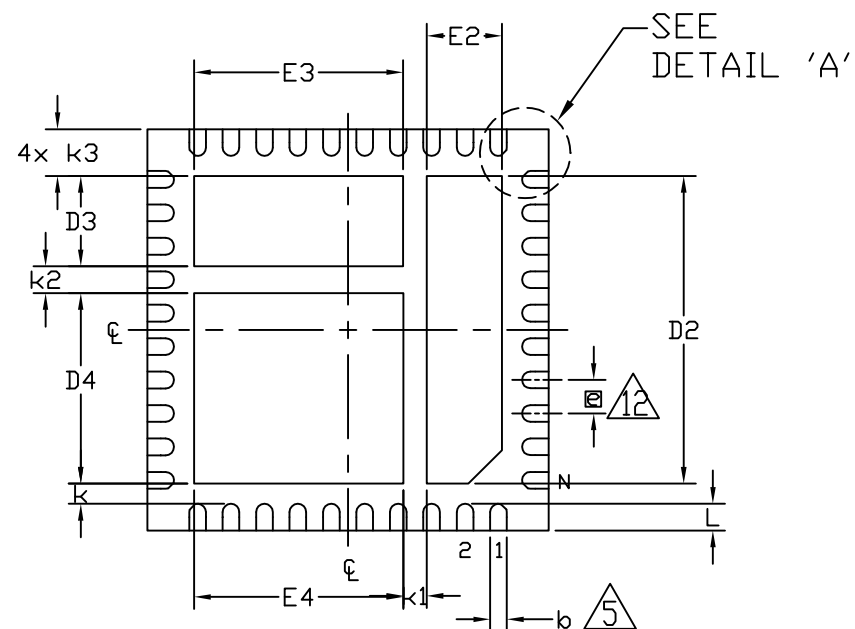
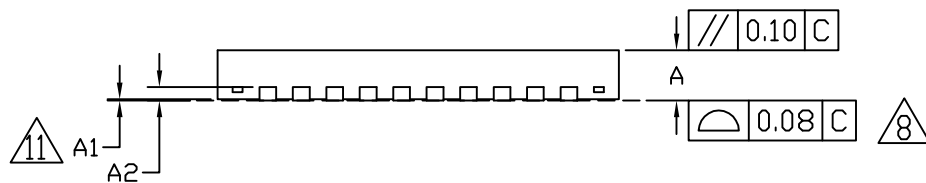


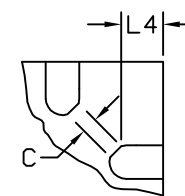
TOP VIEW



BOTTOM VIEW



SIDE VIEW



CORNER LEAD CHAMFER VARIATION
DETAIL 'A'



TITLE:
PACKAGE OUTLINE, 40L HYBRID
THIN QFN, 6x6x0.75mm

APPROVAL
LOUIE REYES
1/14/13

DOCUMENT CONTROL NO.
21-0177

REV. 1
G 2

-DRAWING NOT TO SCALE-

NOTES:

1. ALL DIMENSIONS ARE IN MILLIMETERS. ANGLES ARE IN DEGREES.
2. DIMENSIONING & TOLERANCING CONFORM TO ASME Y14.5M-1994.
3. "N" IS THE TOTAL NUMBER OF TERMINALS.
4. THE TERMINAL #1 IDENTIFIER AND TERMINAL NUMBERING CONVENTION SHALL CONFORM TO JESD 95-1 SPP-012. DETAILS OF TERMINAL #1 IDENTIFIER ARE OPTIONAL, BUT MUST BE LOCATED WITHIN THE ZONE INDICATED. THE TERMINAL #1 IDENTIFIER MAY BE EITHER A MOLD OR MARKED FEATURE.
5. DIMENSION b APPLIES TO METALLIZED TERMINAL AND IS MEASURED BETWEEN 0.25 mm AND 0.30 mm FROM TERMINAL TIP.
6. ND AND NE REFER TO THE NUMBER OF TERMINALS ON EACH "D" AND "E" SIDE, RESPECTIVELY.
7. DEPOPULATION IS POSSIBLE IN A SYMMETRICAL FASHION.
8. COPLANARITY APPLIES TO THE EXPOSED HEAT SINK SLUG AS WELL AS THE TERMINALS.
9. WARPAGE SHALL NOT EXCEED 0.10 mm.
10. MARKING IS FOR PACKAGE ORIENTATION ONLY.
11. DIMENSION "A1" IS BASED ON EMBOSsing OF THE LEAD SURFACES.
12. LEAD CENTERLINES TO BE AT TRUE POSITION AS DEFINED BY DIMENSION "e", ± 0.05 .
13. UNLESS OTHERWISE SPECIFIED, TOLERANCES ARE ± 0.05 mm EXCEPT DIMENSION "k,"
14. EXTERNAL PLATING MATERIAL MAY VARY PER VENDOR / PACKAGE CODE.
15. APPLICABLE ONLY FOR PACKAGES WITH TIGHT CORNER LEADS METAL TO METAL CLEARANCE AS DEFINED IN JEDEC.
16. MATERIAL MUST BE COMPLIANT WITH MAXIM SPECIFICATION 10-0131 FOR SUBSTANCE CONTENT, MUST BE EU ROHS COMPLIANT WITHOUT EXEMPTION AND PB-FREE.
17. ALL DIMENSIONS APPLY BOTH TO LEAD FREE (+) & LEADED (-) PKG. CODES.
18. PACKAGE CODE: T4066M-1

COMMON DIMENSIONS			
SYMBOL	MIN.	NOM.	MAX.
A	0.70	0.75	0.80
A1	0.00	0.02	0.05
A2	0.20 REF.		
b	0.20	0.25	0.30
C	0.12 X 45° REF.		
D	5.90	6.00	6.10
E	5.90	6.00	6.10
e	0.50 BSC.		
k	0.25	-	-
k1	0.30	-	-
k2	0.35	-	-
k3	0.65	-	-
L	0.30	0.40	0.50
L4	0.31 REF.		
ND	10		
NE	10		

EXPOSED PAD VARIATIONS		
SYMBOL	MILLIMETER	INCH
D2	4.59	0.181
E2	1.11	0.044
D3	1.34	0.053
E3	3.12	0.123
D4	2.84	0.112
E4	3.12	0.123



TITLE:
PACKAGE OUTLINE, 40L HYBRID
THIN QFN, 6x6x0.75mm

APPROVAL
LOUIE REYES
1/14/13

DOCUMENT CONTROL NO.
21-0177

REV. G 2/2

-DRAWING NOT TO SCALE-

Mouser Electronics

Authorized Distributor

Click to View Pricing, Inventory, Delivery & Lifecycle Information:

Maxim Integrated:

[MAX17016ETL+](#) [MAX17016ETL+T](#)