



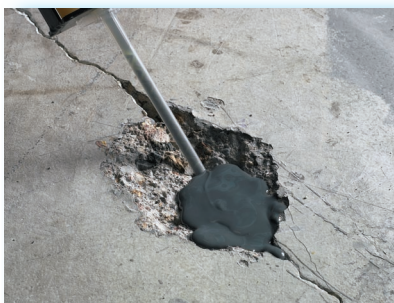
Concrete Maintenance and Repair Products

Fast, convenient application and rapid cure for increased productivity

50 ml and 12 fl. oz. Duo-Pak cartridges, 5-gallon pails, and 55 gallon drums to meet your production volume requirements.



Crack repair, expansion joints, custom threading and anchoring, spall repair, and more.



3M concrete maintenance and repair products offer a complete line of conveniently packaged and dispensed adhesives/sealants for every job from cracks and joints to spalls and more. Repairs are long lasting with strong, flexible bonds that resist weathering, expansion, and contraction.

Fast-setting allows you and your customers to drive on repaired surfaces in as few as five minutes. You can choose non-sag or self-leveling formulations for repairs on both vertical and horizontal surfaces.

3M™ Concrete Maintenance and Repair Products

Application ideas	Product(s)	Description	Work life	Handling time	Cure time
Anchoring and mounting (horizontal)	DP-600 Gray	Setting anchors in floors or horizontal surfaces.	70 sec.	5 min.	1 hr.
Anchoring and mounting (vertical)	DP-600 NS Gray	Setting anchors in walls or vertical surfaces.	50 sec.	4 min.	1 hr.
Crack and spall repair (horizontal)	DP-600 Gray	Repair of cracks or spalls on floors or horizontal surfaces.	70 sec.	5 min.	1 hr.
Crack repair(vertical)	DP-600 NS Gray	Repair of cracks in walls or vertical surfaces.	50 sec.	4 min.	1 hr.
Expansion joint sealing	DP-5105 (Gray, Black, Beige)	Helps sealing and stress-relief of large concrete areas.	5 min.	9 hrs.	24 hr.
Control joint sealing	DP-5106 Gray	Helps relieve stress in large segments of concrete floors.	6 min.	40 min.	24 hr.
Step and ledge repair	DP-600 NS Gray	Repairing chipped or broken steps, ledges or monuments. Can be molded, sanded and painted.	50 sec.	4 min.	1 hr.
Foam base to expansion joints	DP-900 Beige	Can be used in place of backer rod or sand for expansion and control joints (gap-filling foam).	15 sec.	35 sec.	1 hr.

Approximate coverages for 3M Urethane Adhesives and Sealants in half round bead

Bead Size Dimension	Linear ft. per 1.7 fl. oz.	Linear ft. per 12 fl. oz.	Linear ft. per 1/10 gal Cartridge	Linear ft. per 400 ml Sausage Pack	Linear ft. per 600 ml Sausage Pack	Linear ft. per gal
1/2	2.5	19	16	21	32	196
3/8	4.5	33	28	37	56	350
1/4	10.5	75	62	83	125	785
1/8	41.5	298	248	331	497	3,130
1/16	165.0	1182	985	1313	1970	12,420



Heavy duty manual applicator for lengthy control joints and other larger jobs with 12 fl. oz. Duo-Pak cartridges.

6



Pneumatic applicator for large area cracks and other high volume jobs with 12 fl. oz. Duo-Pak cartridges.

7

Crack Width	Crack Depth	Linear ft. per 1.7 fl. oz.	Linear ft. per 12 fl. oz.	Linear ft. per gal
1/4"	1/4"	3.9	28	297
1/2"	1/4"	2	14	148
3/4"	1/4"	1.3	9	95
1"	1/4"	1	7	74
1/4"	1/2"	2	14	148
1/2"	1/2"	1	7	74
3/4"	1/2"	0.6	4	42
1"	1/2"	0.4	3	32

NOTE: The technical information and data provided above is a general guide only and should be considered representative or typical only and should not be used for specification purposes.

In addition to the dispensing methods at left, you can use the lightweight 3M™ EPX™ Plus II Applicator for targeted small area repair with 50 ml Duo-Pak cartridges. Five-gallon pails and 55 gallon drums are also available for use with commercially available bulk dispensing equipment.

Product Use: All statements, technical information and recommendations contained in this document are based upon tests or experience that 3M believes are reliable. However, many factors beyond 3M's control can affect the use and performance of a 3M product in a particular application, including the conditions under which the product is used and the time and environmental conditions in which the product is expected to perform. Since these factors are uniquely within the user's knowledge and control, it is essential that the user evaluate the 3M product to determine whether it is fit for a particular purpose and suitable for the user's method of application. **Warranty and Limited Remedy:** Unless stated otherwise in 3M's product literature, packaging inserts or product packaging for individual products, 3M warrants that each 3M product meets the applicable specifications at the time 3M ships the product. Individual products may have additional or different warranties as stated on product literature, package inserts or product packages. 3M MAKES NO OTHER WARRANTIES, EXPRESS OR IMPLIED, INCLUDING, BUT NOT LIMITED TO, ANY IMPLIED WARRANTY OF MERCHANTABILITY OR FITNESS FOR A PARTICULAR PURPOSE OR ANY IMPLIED WARRANTY ARISING OUT OF A COURSE OF DEALING, CUSTOM OR USAGE OF TRADE. User is responsible for determining whether the 3M product is fit for a particular purpose and suitable for user's application. If the 3M product is defective within the warranty period, your exclusive remedy and 3M's and seller's sole obligation will be, at 3M's option, to replace the product or refund the purchase price. **Limitation of Liability:** Except where prohibited by law, 3M and seller will not be liable for any loss or damage arising from the 3M product, whether direct, indirect, special, incidental or consequential, regardless of the legal theory asserted, including warranty, contract, negligence or strict liability.



Industrial Business Industrial Adhesives and Tapes Division

3M Center Bldg. 21-1W-10
900 Bush Avenue,
St. Paul, MN 55144-1000
1-800-362-3550



Recycled paper
40% pre-consumer
10% post-consumer

Printed in U.S.A.
MCS 0353356
© 3M 2003 78-9236-7098-4