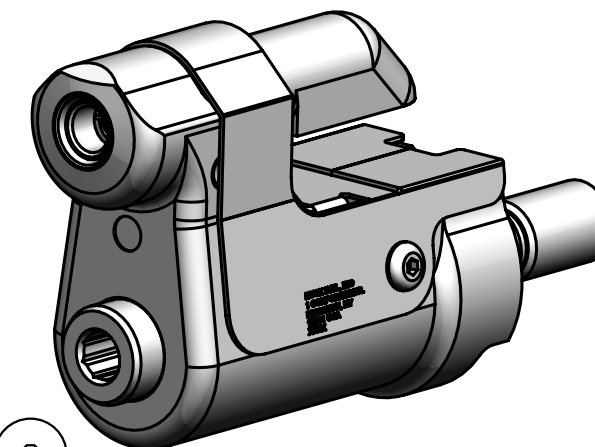


REV	DESCRIPTION	DET	DATE
D	128600 ASSY WAS 126694 COLLET & 126707 DRAWBAR, ADDED NOTE 7		03/04/08
E	128490 WAS 128600 ADDED 128487	JJC	07/31/12
F	ADDED 508511, 130322 WAS 126746, 130326 WAS 126745; ADDED VIEW	NDG	06/13/13



NOTES:

- 1 MAXIMUM RECOMMENDED STROKE .500
- 2 FOR USE WITH THE 225/245 TOOL, USE ATTACHMENT P/N 119400-1 AND STROKE LIMITER 118362
- 3 FOR USE WITH 2500 TOOL, USE ATTACHMENT P/N 119400-1 AND STROKE LIMITER KIT 119888
- 4 FOR OTHER TOOLS AND/OR OTHER TOOL AND STROKE COMBINATIONS, CONSULT ENGINEERING DEPARTMENT
- 5 SHIP WITH STOP 126747
- 6 SHIP WITH DEFLECTOR 126748-2
- 7 SHIP WITH (2) .030 SHIMS 128290 REFERENCE PB563 FOR PROPER USE
- 8 PRIMARILY USED WITH 206-375

(F)	508511	2	#6-32 B.H.C.S.	10
	128487	1	DRAWBAR	9
	126748-2	1	UNITIZED DEFLECTOR	8
	128490	1	COLLET	7
(F)	130326	1	GUARD	6
	120095	1	DEFLECTOR	5
	122727	1	BARBED RETAINER	4
	122725	1	UNITIZED CHUCK JAW	3
(F)	130322	1	TOP GUARD	2
	126696	1	ANVIL	1
	PART NO.	QTY	DESCRIPTION	ITEM

IDENTIFICATION PER SPEC 42-311: ★ ETCH			
ITAR:		HUCK INTERNATIONAL, INC., I.S.D. 1 CORPORATE DR., P.O. BOX 2270 KINGSTON, NEW YORK 12401	
ECCN: EAR99		NOSE ASSEMBLY -08 LGP STRADDLE	
SCH B#: 8467.99.0190		DET: MVM	CK: DATE: 02/12/02 SCALE: 2:1
HTS: 8467.99.0190		B	99-3735