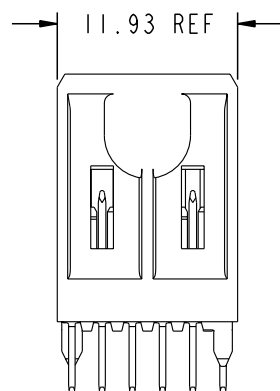
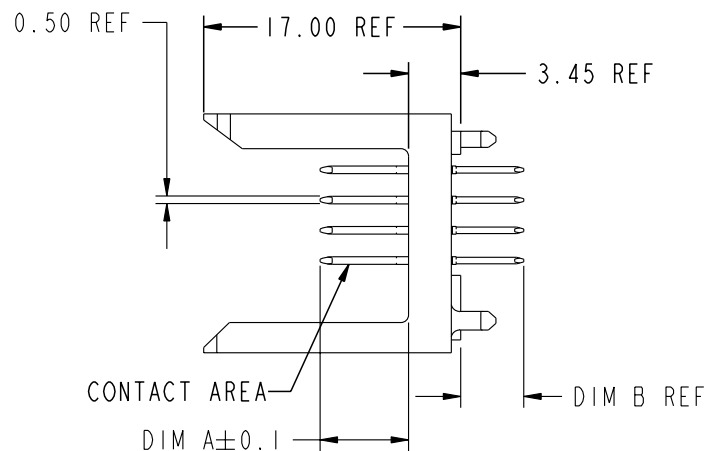
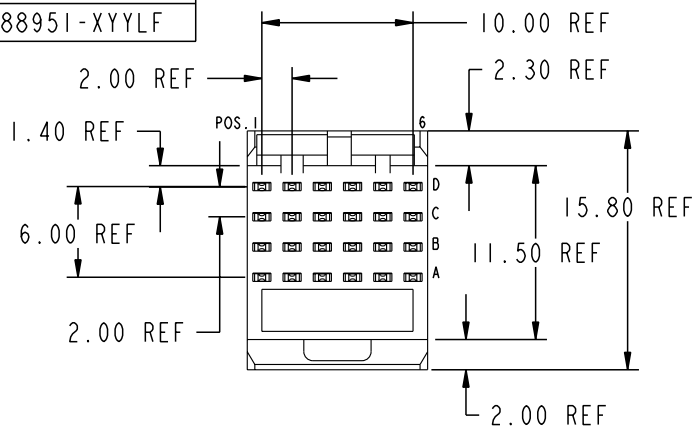


**FCI**

PRODUCT NUMBER
88951-XYX
88951-XYLX



PLATING IN CONTACT AREA		
DASH NUMBER	PERFORMANCE LEVEL	NOTES
-N1XX	TELCORDIA CO (NXT)	-
-1XX	TELCORDIA CO	-
-2XX	TELECOM CLASS	-
-3XX	IEC CLASS I	-
-5XX	TELCORDIA UE	-
-9XX	TELCORDIA CO	-
-N1XXL	TELCORDIA CO (NXT) IEC CLASS I	SEE NOTE 8
-1XXL	TELCORDIA CO IEC CLASS I	SEE NOTE 8
-2XXL	TELECOM CLASS	SEE NOTE 8
-5XXL	TELCORDIA UE	SEE NOTE 8
-361L	CUSTOMER SPECIAL	SEE NOTE 8
-377L	CUSTOMER SPECIAL	SEE NOTE 8

mat'l code				tolerances unless otherwise specified		CUSTOMER		A FCI www.fciconnect.com	
ltr	ecn no.	dr	date	linear	0.X ±0.3	projection	COPY	title METRAL SIGNAL HEADER 1 MOD. 4 ROW STB	
N	V10912	CGD	02/22/01		0.XX ±0.13				
P	V11654	CGD	06/01/01		.XXX ±.051				
R	V21670	TAB	10/18/02	angles	0° ±2°	MM 2:1	scale	product family METRAL	
S	V03-1059	DAI	09/24/03	dr	T.BRUNGARD	11/19/99		size	code
T	V05-0393	DAI	04/26/05	enr	M.STRAWER	11/19/99		dwg no	213
U	V05-1001	LP	11/7/05	chr	M.STRAWER	11/19/99	A	88951	
V	V06-0123	DAI	02/09/06	appd	M.STRAWER	02/29/00		1 of 7	
sheet index	revision sheet	V	V	V	V	V	V	cage code 22526	
		1	2	3	4	5	6	4	

Pro/E

3

cage code 22526

4

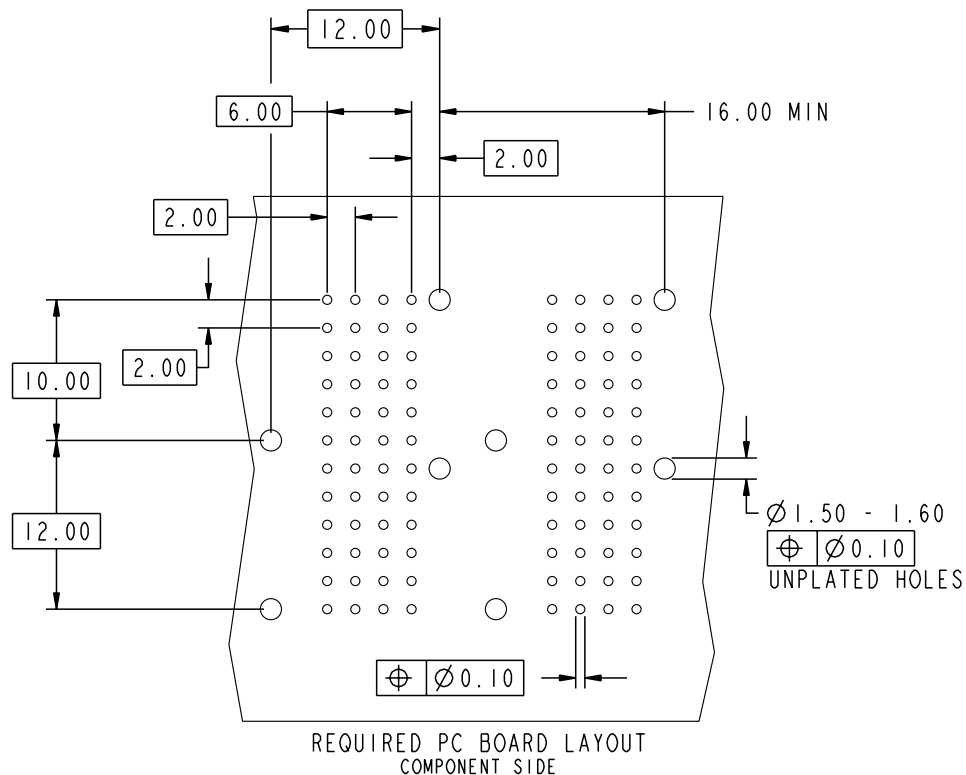
PDM: Rev:V

STATUS:Released

Printed: Feb 14, 2006

A

B






REQUIRED PC BOARD LAYOUT  
COMPONENT SIDE

SEE PRINT 58351 FOR  
ADDITIONAL PCB INFORMATION

KEY		
CODE	DIMENSIONS	
	DIM "A" MATE	DIM "B" TAIL
1	5.00	4.25
2	5.75	4.25
3	6.50	4.25
4	7.25	4.25
5	5.00	3.30
6	5.75	3.30
7	6.50	3.30
8	7.25	3.30
9	5.00	2.65
10	5.75	2.65
11	6.50	2.65
12	7.25	2.65
13	8.00	4.25

A

B

mat'l code				tolerances unless otherwise specified		CUSTOMER		 www.fciconnect.com	
lfr	ecr no.	dr	date	linear	0.X ± 0.3	COPY			title METRAL SIGNAL HEADER 1 MOD. 4 ROW STB
V					0.XX ± 0.13	projection			
					.XXX ± .051				
				angles	0° ± 2°			 MM	product family METRAL
				dr	T.BRUNGARD	11/19/99	size dwg no		
				enr	M.STRAWSE	11/19/99			
				chr	M.STRAWSE	11/19/99		88951	
				appd	M.STRAWSE	02/29/00	A		
									2:1
sheet index	revision sheet								

Pro/E

3

cage code 22526

4

Tous droits strictement reserves. Reproduction ou communication a des tiers interdite sous quelque forme que ce soit sans autorisation ecrite du propriétaire. Propriete de c FCI. Droits de reproduction FCI.

All rights strictly reserved. Reproduction or issue to third parties in any form whatever is not permitted without written authority from the proprietor. Property of FCI. Copyright FCI.

**A**  
**FCI**

METRAL P/N	ROW	CONTACT CODE MOD. 1					
		1	2	3	4	5	6
88951-X01 SEE NOTE 9 LEAD FREE OPTION	D	1	1	1	1	1	1
	C	1	1	1	1	1	1
	B	1	1	1	1	1	1
	A	1	1	1	1	1	1

METRAL P/N	ROW	CONTACT CODE MOD. 1					
		1	2	3	4	5	6
88951-X02 SEE NOTE 9 LEAD FREE OPTION	D	1	1	1	1	1	1
	C	1	1	1	1	1	1
	B	1	1	1	1	1	1
	A	3	3	3	3	3	3

METRAL P/N	ROW	CONTACT CODE MOD. 1					
		1	2	3	4	5	6
88951-X03 SEE NOTE 9 LEAD FREE OPTION	D	3	3	3	3	3	3
	C	2	2	2	2	2	2
	B	2	2	2	2	2	2
	A	3	3	3	3	3	3

METRAL P/N	ROW	CONTACT CODE MOD. 1					
		1	2	3	4	5	6
88951-X04 SEE NOTE 9 LEAD FREE OPTION	D	4	4	4	4	4	4
	C	3	3	3	3	3	3
	B	3	3	3	3	3	3
	A	4	4	4	4	4	4

METRAL P/N	ROW	CONTACT CODE MOD. 1					
		1	2	3	4	5	6
88951-X05 SEE NOTE 9 LEAD FREE OPTION	D	3	3	3	3	3	3
	C	3	3	3	3	3	3
	B	3	3	3	3	3	3
	A	3	3	3	3	3	3

METRAL P/N	ROW	CONTACT CODE MOD. 1					
		1	2	3	4	5	6
88951-X06 SEE NOTE 9 LEAD FREE OPTION	D	2	2	2	2	2	2
	C	2	2	2	2	2	2
	B	2	2	2	2	2	2
	A	2	2	2	2	2	2

METRAL P/N	ROW	CONTACT CODE MOD. 1					
		1	2	3	4	5	6
88951-X07 SEE NOTE 9 LEAD FREE OPTION	D	3	3	3	3	3	3
	C	2	2	2	2	2	2
	B	2	2	2	2	2	2
	A	1	1	1	1	1	1

METRAL P/N	ROW	CONTACT CODE MOD. 1					
		1	2	3	4	5	6
88951-X08 SEE NOTE 9 LEAD FREE OPTION	D	3	3	3	3	3	3
	C	1	1	1	1	1	1
	B	1	1	1	1	1	1
	A	1	1	1	1	1	1

METRAL P/N	ROW	CONTACT CODE MOD. 1					
		1	2	3	4	5	6
88951-X09 SEE NOTE 9 LEAD FREE OPTION	D	4	4	4	4	4	4
	C	4	4	4	4	4	4
	B	4	4	4	4	4	4
	A	4	4	4	4	4	4

METRAL P/N	ROW	CONTACT CODE MOD. 1					
		1	2	3	4	5	6
88951-X10 SEE NOTE 9 LEAD FREE OPTION	D	1	1	1	1	1	1
	C	2	2	2	2	2	2
	B	3	3	3	3	3	3
	A	4	4	4	4	4	4

METRAL P/N	ROW	CONTACT CODE MOD. 1					
		1	2	3	4	5	6
88951-X11 SEE NOTE 9 LEAD FREE OPTION	D	3	3	3	3	3	3
	C	1	1	1	1	1	1
	B	3	3	3	3	3	3
	A	3	3	3	3	3	3

METRAL P/N	ROW	CONTACT CODE MOD. 1					
		1	2	3	4	5	6
88951-X12 SEE NOTE 9 LEAD FREE OPTION	D	4	4	4	4	4	4
	C	3	3	3	3	3	3
	B	2	2	2	2	2	2
	A	1	1	1	1	1	1

METRAL P/N	ROW	CONTACT CODE MOD. 1					
		1	2	3	4	5	6
88951-X13 SEE NOTE 9 LEAD FREE OPTION	D	1	1	1	1	1	1
	C	1	1	1	1	1	1
	B	3	3	3	3	3	3
	A	1	1	1	1	1	1

METRAL P/N	ROW	CONTACT CODE MOD. 1					
		1	2	3	4	5	6
88951-X15 SEE NOTE 9 LEAD FREE OPTION	D	2	2	2	2	2	2
	C	1	1	1	1	1	1
	B	2	2	2	2	2	2
	A	1	1	1	1	1	1

METRAL P/N	ROW	CONTACT CODE MOD. 1					
		1	2	3	4	5	6
88951-X16 SEE NOTE 9 LEAD FREE OPTION	D	2	2	2	2	2	2
	C	3	3	3	3	3	3
	B	4	4	4	4	4	4
	A	3	3	3	3	3	3

METRAL P/N	ROW	CONTACT CODE MOD. 1					
		1	2	3	4	5	6
88951-X17 SEE NOTE 9 LEAD FREE OPTION	D	2	2	2	2	2	2
	C	2	2	2	2	2	2
	B	2	2	2	2	2	2
	A	3	3	3	3	3	3

mat'l code				tolerances unless otherwise specified		CUSTOMER		<b>A</b> <b>FCI</b> www.fciconnect.com				
ltr	ecn no.	dr	date	linear	0.X ±0.3		COPY		title METRAL SIGNAL HEADER 1 MOD. 4 ROW STB			
V					0.XX ±0.13		projection					
					.XXX ±.051							
				angles	0° ±2°							
				dr	T.BRUNGARD	11/19/99	 scale 2:1		product family	METRAL	code	213
				enrg	M.STRAWSE	11/19/99			size	dwg no	sheet	3
				chr	M.STRAWSE	11/19/99			A	88951		
				appd	M.STRAWSE	02/29/00						
sheet	revision											
index	sheet											

Pro/E

3

cage code 22526

4

PDM: Rev:V

STATUS:Released

Printed: Feb 14, 2006

Tous droits strictement reserves. Reproduction ou communication a des tiers interdite sous quelque forme que ce soit sans autorisation ecrite du proprietaire. Propriete de c FCI. Droits de reproduction FCI.

All rights strictly reserved. Reproduction or issue to third parties in any form whatever is not permitted without written authority from the proprietor. Property of FCI. Copyright FCI.

**A**  
**FCI**

METRAL P/N	ROW	CONTACT CODE MOD. 1					
		1	2	3	4	5	6
88951-X31 SEE NOTE 9 LEAD FREE OPTION	D	5	5	5	5	5	5
	C	5	5	5	5	5	5
	B	5	5	5	5	5	5
	A	5	5	5	5	5	5

METRAL P/N	ROW	CONTACT CODE MOD. 1					
		1	2	3	4	5	6
88951-X32 SEE NOTE 9 LEAD FREE OPTION	D	5	5	5	5	5	5
	C	5	5	5	5	5	5
	B	5	5	5	5	5	5
	A	7	7	7	7	7	7

METRAL P/N	ROW	CONTACT CODE MOD. 1					
		1	2	3	4	5	6
88951-X33 SEE NOTE 9 LEAD FREE OPTION	D	7	7	7	7	7	7
	C	6	6	6	6	6	6
	B	6	6	6	6	6	6
	A	7	7	7	7	7	7

METRAL P/N	ROW	CONTACT CODE MOD. 1					
		1	2	3	4	5	6
88951-X34 SEE NOTE 9 LEAD FREE OPTION	D	8	8	8	8	8	8
	C	7	7	7	7	7	7
	B	7	7	7	7	7	7
	A	8	8	8	8	8	8

METRAL P/N	ROW	CONTACT CODE MOD. 1					
		1	2	3	4	5	6
88951-X35 SEE NOTE 9 LEAD FREE OPTION	D	7	7	7	7	7	7
	C	7	7	7	7	7	7
	B	7	7	7	7	7	7
	A	7	7	7	7	7	7

METRAL P/N	ROW	CONTACT CODE MOD. 1					
		1	2	3	4	5	6
88951-X36 SEE NOTE 9 LEAD FREE OPTION	D	6	6	6	6	6	6
	C	6	6	6	6	6	6
	B	6	6	6	6	6	6
	A	6	6	6	6	6	6

METRAL P/N	ROW	CONTACT CODE MOD. 1					
		1	2	3	4	5	6
88951-X37 SEE NOTE 9 LEAD FREE OPTION	D	7	7	7	7	7	7
	C	6	6	6	6	6	6
	B	6	6	6	6	6	6
	A	5	5	5	5	5	5

METRAL P/N	ROW	CONTACT CODE MOD. 1					
		1	2	3	4	5	6
88951-X38 SEE NOTE 9 LEAD FREE OPTION	D	7	7	7	7	7	7
	C	5	5	5	5	5	5
	B	5	5	5	5	5	5
	A	5	5	5	5	5	5

METRAL P/N	ROW	CONTACT CODE MOD. 1					
		1	2	3	4	5	6
88951-X39 SEE NOTE 9 LEAD FREE OPTION	D	8	8	8	8	8	8
	C	8	8	8	8	8	8
	B	8	8	8	8	8	8
	A	8	8	8	8	8	8

METRAL P/N	ROW	CONTACT CODE MOD. 1					
		1	2	3	4	5	6
88951-X40 SEE NOTE 9 LEAD FREE OPTION	D	5	5	5	5	5	5
	C	6	6	6	6	6	6
	B	7	7	7	7	7	7
	A	8	8	8	8	8	8

METRAL P/N	ROW	CONTACT CODE MOD. 1					
		1	2	3	4	5	6
88951-X41 SEE NOTE 9 LEAD FREE OPTION	D	7	7	7	7	7	7
	C	5	5	5	5	5	5
	B	7	7	7	7	7	7
	A	7	7	7	7	7	7

METRAL P/N	ROW	CONTACT CODE MOD. 1					
		1	2	3	4	5	6
88951-X42 SEE NOTE 9 LEAD FREE OPTION	D	8	8	8	8	8	8
	C	7	7	7	7	7	7
	B	6	6	6	6	6	6
	A	5	5	5	5	5	5

METRAL P/N	ROW	CONTACT CODE MOD. 1					
		1	2	3	4	5	6
88951-X43 SEE NOTE 9 LEAD FREE OPTION	D	5	5	5	5	5	5
	C	5	5	5	5	5	5
	B	7	7	7	7	7	7
	A	5	5	5	5	5	5

METRAL P/N	ROW	CONTACT CODE MOD. 1					
		1	2	3	4	5	6
88951-X45 SEE NOTE 9 LEAD FREE OPTION	D	6	6	6	6	6	6
	C	5	5	5	5	5	5
	B	6	6	6	6	6	6
	A	5	5	5	5	5	5

METRAL P/N	ROW	CONTACT CODE MOD. 1					
		1	2	3	4	5	6
88951-X46 SEE NOTE 9 LEAD FREE OPTION	D	6	6	6	6	6	6
	C	7	7	7	7	7	7
	B	8	8	8	8	8	8
	A	7	7	7	7	7	7

METRAL P/N	ROW	CONTACT CODE MOD. 1					
		1	2	3	4	5	6
88951-X47 SEE NOTE 9 LEAD FREE OPTION	D	6	6	6	6	6	6
	C	6	6	6	6	6	6
	B	6	6	6	6	6	6
	A	7	7	7	7	7	7

mat'l code				--		tolerances unless otherwise specified		CUSTOMER		<b>A</b> <b>FCI</b> www.fciconnect.com	
l/r	ecr no.	dr	date	linear	0.X ±0.3		COPY		title METRAL SIGNAL HEADER 1 MOD. 4 ROW STB		
V					0.XX ±0.13		projection				
					.XXX ±.051						
				angles	0° ±2°				product family METRAL code 213		
				dr	T.BRUNGARD	11/19/99	MM				
				enrg	M.STRAWSE	11/19/99	←→				
				chr	M.STRAWSE	11/19/99	scale		size A 88951 sheet 4		
				appd	M.STRAWSE	02/29/00	2:1				
sheet index	revision sheet										

Pro/E

3

cage code 22526

4

PDM: Rev:V

STATUS:Released

Printed: Feb 14, 2006

Tous droits strictement reserves. Reproduction ou communication a des tiers interdite sous quelque forme que ce soit sans autorisation ecrite du proprietaire. Propriete de c FCI. Droits de reproduction FCI.

All rights strictly reserved. Reproduction or issue to third parties in any form whatever is not permitted without written authority from the proprietor. Property of FCI. Copyright FCI.

**A**  
**FCI**

METRAL P/N	ROW	CONTACT CODE MOD. 1					
		1	2	3	4	5	6
88951-X61 SEE NOTE 9 LEAD FREE OPTION	D	9	9	9	9	9	9
	C	9	9	9	9	9	9
	B	9	9	9	9	9	9
	A	9	9	9	9	9	9

METRAL P/N	ROW	CONTACT CODE MOD. 1					
		1	2	3	4	5	6
88951-X62 SEE NOTE 9 LEAD FREE OPTION	D	9	9	9	9	9	9
	C	9	9	9	9	9	9
	B	9	9	9	9	9	9
	A	1	1	1	1	1	1

METRAL P/N	ROW	CONTACT CODE MOD. 1					
		1	2	3	4	5	6
88951-X63 SEE NOTE 9 LEAD FREE OPTION	D	1	1	1	1	1	1
	C	10	10	10	10	10	10
	B	10	10	10	10	10	10
	A	1	1	1	1	1	1

METRAL P/N	ROW	CONTACT CODE MOD. 1					
		1	2	3	4	5	6
88951-X64 SEE NOTE 9 LEAD FREE OPTION	D	12	12	12	12	12	12
	C	1	1	1	1	1	1
	B	1	1	1	1	1	1
	A	12	12	12	12	12	12

METRAL P/N	ROW	CONTACT CODE MOD. 1					
		1	2	3	4	5	6
88951-X65 SEE NOTE 9 LEAD FREE OPTION	D	1	1	1	1	1	1
	C	1	1	1	1	1	1
	B	1	1	1	1	1	1
	A	1	1	1	1	1	1

METRAL P/N	ROW	CONTACT CODE MOD. 1					
		1	2	3	4	5	6
88951-X66 SEE NOTE 9 LEAD FREE OPTION	D	10	10	10	10	10	10
	C	10	10	10	10	10	10
	B	10	10	10	10	10	10
	A	10	10	10	10	10	10

METRAL P/N	ROW	CONTACT CODE MOD. 1					
		1	2	3	4	5	6
88951-X67 SEE NOTE 9 LEAD FREE OPTION	D	1	1	1	1	1	1
	C	10	10	10	10	10	10
	B	10	10	10	10	10	10
	A	9	9	9	9	9	9

METRAL P/N	ROW	CONTACT CODE MOD. 1					
		1	2	3	4	5	6
88951-X68 SEE NOTE 9 LEAD FREE OPTION	D	1	1	1	1	1	1
	C	9	9	9	9	9	9
	B	9	9	9	9	9	9
	A	9	9	9	9	9	9

METRAL P/N	ROW	CONTACT CODE MOD. 1					
		1	2	3	4	5	6
88951-X69 SEE NOTE 9 LEAD FREE OPTION	D	12	12	12	12	12	12
	C	12	12	12	12	12	12
	B	12	12	12	12	12	12
	A	12	12	12	12	12	12

METRAL P/N	ROW	CONTACT CODE MOD. 1					
		1	2	3	4	5	6
88951-X70 SEE NOTE 9 LEAD FREE OPTION	D	9	9	9	9	9	9
	C	10	10	10	10	10	10
	B	1	1	1	1	1	1
	A	12	12	12	12	12	12

METRAL P/N	ROW	CONTACT CODE MOD. 1					
		1	2	3	4	5	6
88951-X71 SEE NOTE 9 LEAD FREE OPTION	D	1	1	1	1	1	1
	C	9	9	9	9	9	9
	B	1	1	1	1	1	1
	A	1	1	1	1	1	1

METRAL P/N	ROW	CONTACT CODE MOD. 1					
		1	2	3	4	5	6
88951-X72 SEE NOTE 9 LEAD FREE OPTION	D	12	12	12	12	12	12
	C	1	1	1	1	1	1
	B	10	10	10	10	10	10
	A	9	9	9	9	9	9

METRAL P/N	ROW	CONTACT CODE MOD. 1					
		1	2	3	4	5	6
88951-X73 SEE NOTE 9 LEAD FREE OPTION	D	9	9	9	9	9	9
	C	9	9	9	9	9	9
	B	1	1	1	1	1	1
	A	9	9	9	9	9	9

METRAL P/N	ROW	CONTACT CODE MOD. 1					
		1	2	3	4	5	6
88951-X75 SEE NOTE 9 LEAD FREE OPTION	D	10	10	10	10	10	10
	C	9	9	9	9	9	9
	B	10	10	10	10	10	10
	A	9	9	9	9	9	9

METRAL P/N	ROW	CONTACT CODE MOD. 1					
		1	2	3	4	5	6
88951-X76 SEE NOTE 9 LEAD FREE OPTION	D	10	10	10	10	10	10
	C	1	1	1	1	1	1
	B	12	12	12	12	12	12
	A	1	1	1	1	1	1

METRAL P/N	ROW	CONTACT CODE MOD. 1					
		1	2	3	4	5	6
88951-X77 SEE NOTE 9 LEAD FREE OPTION	D	10	10	10	10	10	10
	C	10	10	10	10	10	10
	B	10	10	10	10	10	10
	A	1	1	1	1	1	1

mat'l code				--		tolerances unless otherwise specified		CUSTOMER		<b>A</b> <b>FCI</b> www.fciconnect.com	
lfr	ecr no.	dr	date	linear	0.X ±0.3		COPY		title METRAL SIGNAL HEADER 1 MOD. 4 ROW STB		
V					0.XX ±0.13		projection				
					.XXX ±.051						
				angles	0° ±2°				product family METRAL code 213		
				dr	T.BRUNGARD	11/19/99	MM				
				enrg	M.STRAWSE	11/19/99	←→				
				chr	M.STRAWSE	11/19/99	scale		size A 88951 sheet 5		
				appd	M.STRAWSE	02/29/00	2:1				
sheet	revision										
index	sheet								cage code 22526		

Pro/E

3

PDM: Rev:V

STATUS:Released

Printed: Feb 14, 2006

Tous droits strictement reserves. Reproduction ou communication a des tiers interdite sous quelque forme que ce soit sans autorisation ecrite du proprietaire. Propriete de c FCI. Droits de reproduction FCI.

All rights strictly reserved. Reproduction or issue to third parties in any form whatever is not permitted without written authority from the proprietor. Property of FCI. Copyright FCI.

**A**  
**FCI**

METRAL P/N	ROW	CONTACT CODE MOD. 1					
		1	2	3	4	5	6
88951-X78 SEE NOTE 9 LEAD FREE OPTION	D	2	2	2	2	2	2
	C	2	2	2	2	2	2
	B	4	4	4	4	4	4
	A	2	2	2	2	2	2

METRAL P/N	ROW	CONTACT CODE MOD. 1					
		1	2	3	4	5	6
88951-X79 SEE NOTE 9 LEAD FREE OPTION	D	3	3	3	3	3	3
	C	4	4	4	4	4	4
	B	13	13	13	13	13	13
	A	13	13	13	13	13	13

METRAL P/N	ROW	CONTACT CODE MOD. 1					
		1	2	3	4	5	6
88951-X80 SEE NOTE 9 LEAD FREE OPTION	D	3	3	3	3	3	3
	C	3	3	3	3	3	3
	B	13	13	13	13	13	13
	A	3	3	3	3	3	3

METRAL P/N	ROW	CONTACT CODE MOD. 1					
		1	2	3	4	5	6
88951-X81 SEE NOTE 9 LEAD FREE OPTION	D	13	13	13	13	13	13
	C	13	13	13	13	13	13
	B	13	13	13	13	13	13
	A	13	13	13	13	13	13

1 | 2

METRAL P/N	ROW	CONTACT CODE MOD. 1					
		1	2	3	4	5	6
88951-X82 SEE NOTE 9 LEAD FREE OPTION	D	9	9	9	9	9	9
	C	9	9	9	9	9	9
	B	9	9	9	9	9	9
	A	9	9	9	9	9	9

METRAL P/N	ROW	CONTACT CODE MOD. 1					
		1	2	3	4	5	6
88951-X83 SEE NOTE 9 LEAD FREE OPTION	D	9	9	9	9	9	9
	C	9	9	9	9	9	9
	B	9	9	9	9	9	9
	A	11	11	11	11	11	11

METRAL P/N	ROW	CONTACT CODE MOD. 1					
		1	2	3	4	5	6
88951-X84 SEE NOTE 9 LEAD FREE OPTION	D	12	12	12	12	12	12
	C	11	11	11	11	11	11
	B	11	11	11	11	11	11
	A	12	12	12	12	12	12

METRAL P/N	ROW	CONTACT CODE MOD. 1					
		1	2	3	4	5	6
88951-X85 SEE NOTE 9 LEAD FREE OPTION	D	11	11	11	11	11	11
	C	11	11	11	11	11	11
	B	11	11	11	11	11	11
	A	11	11	11	11	11	11

3 |

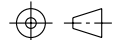
METRAL P/N	ROW	CONTACT CODE MOD. 1					
		1	2	3	4	5	6
88951-X86 SEE NOTE 9 LEAD FREE OPTION	D	10	10	10	10	10	10
	C	10	10	10	10	10	10
	B	12	12	12	12	12	12
	A	10	10	10	10	10	10

METRAL P/N	ROW	CONTACT CODE MOD. 1					
		1	2	3	4	5	6
88951-X87 SEE NOTE 9 LEAD FREE OPTION	D	10	10	10	10	10	10
	C	10	10	10	10	10	10
	B	10	10	10	10	10	10
	A	10	10	10	10	10	10

METRAL P/N	ROW	CONTACT CODE MOD. 1					
		1	2	3	4	5	6
88951-X88 SEE NOTE 9 LEAD FREE OPTION	D	12	12	12	12	12	12
	C	12	12	12	12	12	12
	B	12	12	12	12	12	12
	A	12	12	12	12	12	12

METRAL P/N	ROW	CONTACT CODE MOD. 1					
		1	2	3	4	5	6
88951-X89 SEE NOTE 9 LEAD FREE OPTION	D	6	6	6	6	6	6
	C	6	6	6	6	6	6
	B	8	8	8	8	8	8
	A	6	6	6	6	6	6

4

mat'l code				tolerances unless otherwise specified		CUSTOMER		<b>A</b> <b>FCI</b> www.fciconnect.com	
ltr	ecn no.	dr	date	linear	0.X ±0.3		COPY		projection 
V					0.XX ±0.13				
					.XXX ±.051				
				angles	0° ±2°				
				dr	T.BRUNGARD	11/19/99			
				enr	M.STRAWSE	11/19/99			
				chr	M.STRAWSE	11/19/99			
				appd	M.STRAWSE	02/29/00			
sheet index		revision sheet							

Pro/E

3 |

cage code 22526

4

PDM: Rev:V

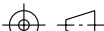

STATUS:Released

Printed: Feb 14, 2006

PRODUCT NUMBER
88951-XY Y
88951-XYLF

NOTES:

- FOR DIM A AND B SEE SHEET 2 AND UP.
- BODY MATERIAL: LIQUID CRYSTAL  
POLYMER 30 % GLASS.  
FLAME RETARDANT ACC. UL 94-V0.
- PIN MATERIAL:  
PHOSPHOR BRONZE.
- PLATING ON SOLDER TO BOARD:  
88951-XY Y IS SnPb  
88951-XYLF IS SN (LEAD FREE)  
PLATING ON CONTACT AREA CONFORMS TO PERFORMANCE LEVEL SHOWN IN TABLE.
- PRODUCT MARKING:  
PART NUMBER DESIGNATION & BATCH I.D.
- ALL PRODUCTS WITH PART NUMBERS SHOWN IN SUBSEQUENT TABLES WILL BE PACKAGED IN TUBES. IF TRAY PACKAGING IS REQUIRED, A SUFFIX "P" WILL BE ADDED TO THE END OF THE PART NUMBER. EXAMPLE: XXXXX-XXXP OR XXXXX-XXPLF
- PRODUCT SPECIFICATION GS-12-180  
APPLICATION SPECIFICATION BUS-20-074
- THE PRODUCTS WHERE THE PART NUMBER ENDS IN LF MEET THE EUROPEAN UNION DIRECTIVES AND OTHER COUNTRY REGULATIONS AS DESCRIBED IN GS-22-008.
- FOR LEAD FREE PART NUMBERS, ADD AN "LF" SUFFIX.  
EXAMPLE: 88951-X0ILF
- ALL PRODUCTS EXCEPT THOSE WITH PART NUMBERS CONTAINING (DRAWING NO.)-N1--- OR (DRAWING NO.)-N5---WILL WITHSTAND EXPOSURE TO 260°C FOR 60 SECONDS IN A CONVECTION, INFRA-RED OR VAPOR PHASE REFLOW OVEN. PART NUMBERS (DRAWING NO.)-N1--- AND (DRAWINGS NO.)-N5---WILL NOT WITHSTAND REFLOW AND Au CONTACT SURFACE OF THE CONTACTS SHALL BE EXPOSED TO A MAXIMIM 140°C FOR NO LONGER THAN 15 SECONDS IN A WAVE SOLDER APPLICATION.

mat'l code				tolerances unless otherwise specified		CUSTOMER		<div><div>A</div><div>FCI</div><div>www.fciconnect.com</div></div>			
lfr	ecn no.	dr	date	linear	0.X ±0.3	COPY		titleMETRAL SIGNAL HEADER 1 MOD. 4 ROW STB			
V					0.XX ±0.13	projection					
					.XXX ±.051						
				angles	0° ±2°			product family		METRAL	code
				dr	T.BRUNGARD	11/19/99	scale	size	dwg no	213	
				enrg	M.STRAWSE	11/19/99		A	88951	sheet	
				chr	M.STRAWSE	11/19/99				7	
				appd	M.STRAWSE	02/29/00					
sheet index	revision sheet										

Pro/E

3

cage code 22526

4