



General data

Signal lamps with lamp socket. The standard illumination is by a filament lamp; illumination with LED is available on request. The mm specification in the product name indicates the appropriate mounting hole diameter of the signal lamps. For further signal lamps, refer to the „8 mm“ and „LUMOTAST“ pushbutton ranges as well as the signal indicators of the „RAFIX“ control component ranges.

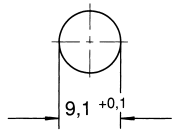
Content

Signal lamps with lamp socket W 2 x 4.6d, 9.1 mm	3 - 32
Signal lamps with lamp socket W 2 x 4.6d, 9.1 mm, round lens	3 - 33
Signal lamps with lamp socket T 4.6, 9.1 mm	3 - 34
Signal lamps with lamp socket T 4.6, 9.1 mm, round lens	3 - 35
Signal lamps with lamp socket T 4.6, 9.1 mm, round lens	3 - 35
Signal lamps with lamp socket W 2x4,6d, 11.1 mm	3 - 36
Signal lamps with lamp socket W 2x4,6d, 11.1 mm, round lens	3 - 37
Signal lamps with lamp socket BA 9s (MBC/MCC), 16.2 mm	3 - 38
Signal lamps with lamp socket BA 9s (MBC/MCC), 16.2 mm, round lens	3 - 39
Signal lamps with lamp socket BA 9s (MBC/MCC), 16.2 mm, round lens	3 - 39
Signal lamps with lamp socket E 10 (MES), 16.2 mm	3 - 40
Signal lamps with lamp socket E 10 (MES), 16.2 mm, round lens	3 - 41
Signal lamps with lamp socket E 10 (MES), 16.2 mm, round lens	3 - 41
Signal lamps with lamp socket E 10 (MES), 16.2 mm, round lens	3 - 42
Signal lamps with lamp socket BA 9s (MBC/MCC), 18.2 mm	3 - 44
Signal lamps with lamp socket BA 9s (MBC/MCC), 18.2 mm, round lens	3 - 45
Signal lamps with lamp socket E 14, 22.3 mm	3 - 46
Signal lamps with lamp socket E 14, IP40, 22.3 mm	3 - 47
Signal lamps with lamp socket E 14, 22.3 mm, screw-on lens, IP40	3 - 47
Signal lamps with lamp socket E 14, 30.5 mm	3 - 48
Signal lamps with lamp socket E 14, IP40, 30.5 mm	3 - 49
Signal lamps with lamp socket E 14, IP40, 30.5 mm	3 - 49
Signal lamps with lamp socket E 14, IP40, 30.5 mm	3 - 50
Signal lamps with lamp socket BA 15d, 30.5 mm	3 - 52
Signal lamps with lamp socket BA 15d, IP40, 30.5 mm	3 - 53
Signal lamps with lamp socket BA 15d, IP40, 30.5 mm	3 - 54
Signal lamps with lamp socket BA 15d, IP40, 30.5 mm	3 - 54

Signal lamps with lamp socket W 2 x 4.6d, 9.1 mm



Pict.: red



Mounting hole

Technical data

General information

Form of lens	round
Colour of lens	see order block
Diameter of collar	11 mm

Dimensions

Overall height	7 mm
Mounting depth	25.5 mm
Mounting hole	9.1 mm

Mechanical design

Mounting	ring nut
Terminals	quick connector 2.8 x 0.5 tin plated
Lamp socket	W 2 x 4.6d
Lamp	filament lamp

Electrical characteristics

Voltage limit max.	42 V
Power limit max.	1.2 W

Other specifications

Degree of protection from front side	IP40
Weight	1 g

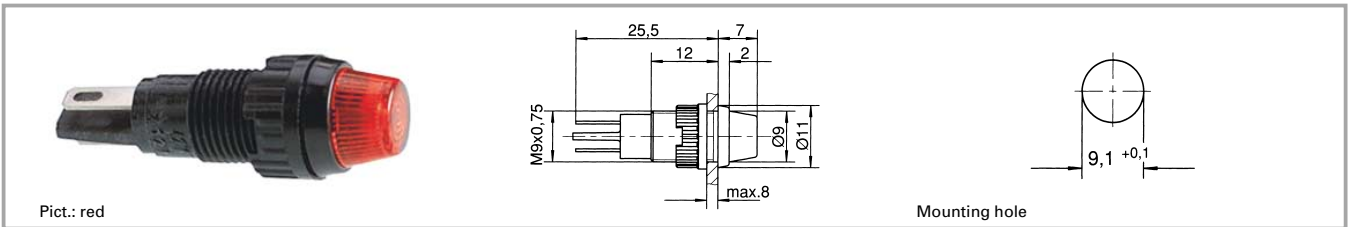
3

Accessories Signal lamps with lamp socket W 2 x 4.6d, 9.1 mm

With
Socket

Description	Photo	Order no.	Page
Filament lamp, W 2 x 4.6d base, 24 - 30 V		1.90.120.005/0000	5 - 4
Filament lamp, W 2 x 4.6d base, 60 V		1.90.120.009/0000	5 - 4
Filament lamp, W 2 x 4.6d base, 48 V		1.90.120.010/0000	5 - 4
Filament lamp, W 2 x 4.6d base, 24 V		1.90.120.011/0000	5 - 4
Filament lamp, W 2 x 4.6d base, 12 V		1.90.120.012/0000	5 - 4
Filament lamp, W 2 x 4.6d base, 6 V		1.90.120.013/0000	5 - 4
Fixing spanner M 9, M 10		5.58.002.025/0105	5 - 23

Signal lamps with lamp socket W 2 x 4.6d, 9.1 mm, round lens



Voltage limit max.	Power limit max.	Lamp	Colour of lens	Order no. complete	Order no. single parts	
					Housing	Lens
42 V	1.2 W	filament lamp	transparent colourless	1.66.001.011/1002	1.66.001.026/0000	5.49.255.002/1002
42 V	1.2 W	filament lamp	transparent red	1.66.001.011/1301	1.66.001.026/0000	5.49.255.002/1301
42 V	1.2 W	filament lamp	transparent yellow	1.66.001.011/1402	1.66.001.026/0000	5.49.255.002/1402
42 V	1.2 W	filament lamp	transparent green	1.66.001.011/1502	1.66.001.026/0000	5.49.255.002/1502
42 V	1.2 W	filament lamp	transparent blue	1.66.001.011/1601	1.66.001.026/0000	5.49.255.002/1601

Technical data see page 3 - 32
Please order luminous elements separately.

Signal lamps with lamp socket T 4.6, 9.1 mm



Technical data

General information

Form of lens	see order block
Colour of lens	see order block
Diameter of collar	11 mm

Dimensions

Overall height	see order block
Mounting depth	30.5 mm
Mounting hole	9.1 mm

Mechanical design

Mounting	ring nut
Terminals	solder terminals
Lamp socket	T 4.6
Lamp	filament lamp

Electrical characteristics




Voltage limit max.	42 V
Power limit max.	1 W

Other specifications

Degree of protection from front side	IP40
Weight	1 g

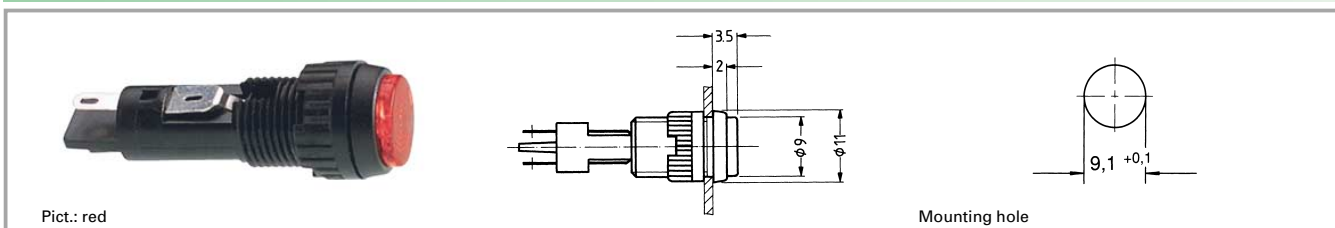
3

Accessories Signal lamps with lamp socket T 4.6, 9.1 mm

Description	Photo	Order no.	Page
Filament lamp, T 4.6 base, 12 V		1.90.100.012/0000	5 - 6
Filament lamp, T 4.6 base, 24 V		1.90.100.013/0000	5 - 6
Fixing spanner M 9, M 10		5.58.002.025/0105	5 - 23

With
Socket

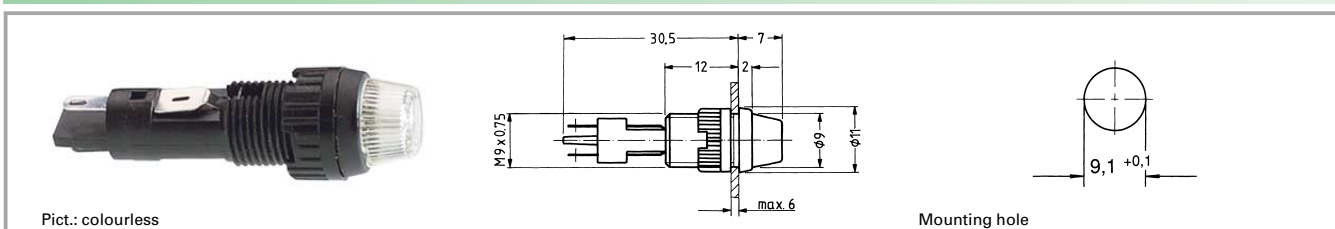
Signal lamps with lamp socket T 4.6, 9.1 mm, round lens



Voltage limit max.	Lamp socket	Lamp	Colour of lens	Order no. complete	Order no. single parts	
					Housing	Lens
42 V	T 4.6	filament lamp	transparent colourless	1.02.157.001/1002	1.02.157.021/0000	5.49.255.001/1002
42 V	T 4.6	filament lamp	transparent red	1.02.157.001/1307	1.02.157.021/0000	5.49.255.001/1307
42 V	T 4.6	filament lamp	transparent yellow	1.02.157.001/1403	1.02.157.021/0000	5.49.255.001/1403
42 V	T 4.6	filament lamp	transparent green	1.02.157.001/1510	1.02.157.021/0000	5.49.255.001/1510

Technical data see page 3 - 34

Signal lamps with lamp socket T 4.6, 9.1 mm, round lens



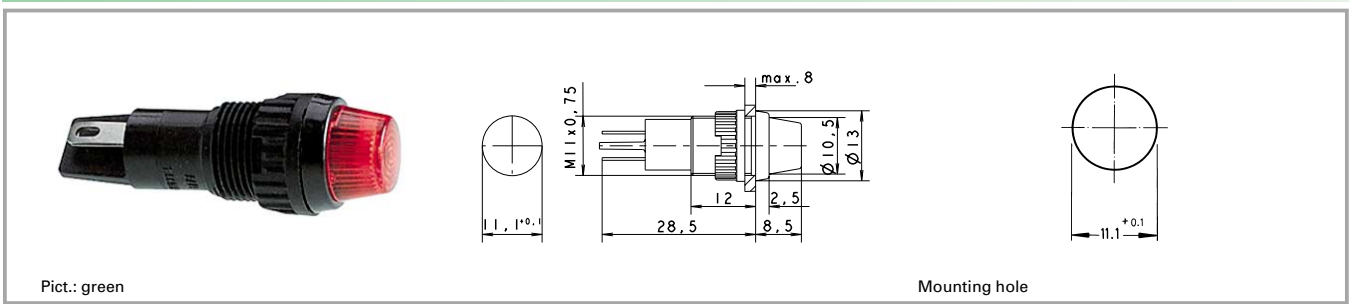
Voltage limit max.	Lamp socket	Lamp	Colour of lens	Order no. complete	Order no. single parts	
					Housing	Lens
42 V	T 4.6	filament lamp	transparent colourless	1.02.157.011/1002	1.02.157.021/0000	5.49.255.002/1002
42 V	T 4.6	filament lamp	transparent red	1.02.157.011/1301	1.02.157.021/0000	5.49.255.002/1301
42 V	T 4.6	filament lamp	transparent yellow	1.02.157.011/1402	1.02.157.021/0000	5.49.255.002/1402
42 V	T 4.6	filament lamp	transparent green	1.02.157.011/1502	1.02.157.021/0000	5.49.255.002/1502

Technical data see page 3 - 34

3

With
Socket

Signal lamps with lamp socket W 2x4,6d, 11.1 mm



Technical data

General information

Form of lens	round
Colour of lens	see order block
Diameter of collar	11

Electrical characteristics

Voltage limit max.	42 V
Power limit max.	1.2 W

Dimensions

Overall height	8.5 mm
Mounting depth	28.5 mm
Mounting hole	11.10 mm

Other specifications

Degree of protection from front side	IP40
Weight	1.4 g

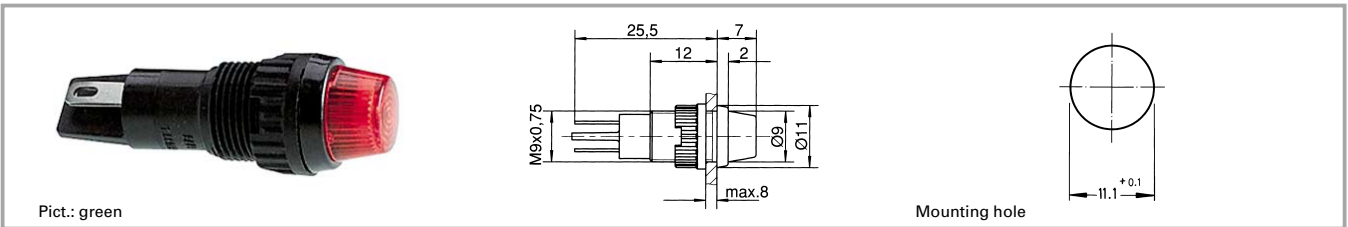
Mechanical design

Mounting	ring nut
Terminals	quick connector A 2.8 x 0.5
Lamp socket	W 2 x 4.6 d
Lamp	filament lamp

Accessories Signal lamps with lamp socket W 2x4,6d

Description	Photo	Order no.	Page
Filament lamp, W 2 x 4.6d base, 24 V		1.90.120.005/0000	5 - 4
Filament lamp, W 2 x 4.6d base, 60 V		1.90.120.009/0000	5 - 4
Filament lamp, W 2 x 4.6d base, 48 V		1.90.120.010/0000	5 - 4
Filament lamp, W 2 x 4.6d base, 24 V		1.90.120.011/0000	5 - 4
Filament lamp, W 2 x 4.6d base, 12 V		1.90.120.012/0000	5 - 4
Filament lamp, W 2 x 4.6d base, 6 V		1.90.120.013/0000	5 - 4
Protective sleeve made of Buna N (NBR), 8 x 30		5.52.011.023/0100	
Fixing spanner M 11, M 13		5.58.002.026/0105	5 - 23

Signal lamps with lamp socket W 2x4,6d, 11.1 mm, round lens



Voltage limit max.	Power limit max.	Lamp socket	Colour of lens	Order no. without lens	Note
42 V	1.2 W	W 2 x 4.6 d		1.66.003.001/0000	Please include the desired lens in your order.

Technical data see page 3 - 36

- Accessories:**
Lens transparent colourless: **5.49.255.003/1002**
Lens transparent red: **5.49.255.003/1301**
Lens transparent yellow: **5.49.255.003/1402**
Lens transparent green: **5.49.255.003/1502**
Lens transparent blue: **5.49.255.003/1601**

Please order luminous elements separately.

Signal lamps with lamp socket BA 9s (MBC/MCC), 16.2 mm



Technical data

General information

Form of lens	see order block
Colour of lens	see order block
Diameter of collar	see order block

Dimensions

Overall height	see order block
Mounting depth	45.8 mm
Mounting hole	16.2 mm

Mechanical design

Mounting	ring nut
Terminals	quick connector 6.3 x 0.8 / 2 x 2.8 x 0.8 tin plated
Lamp socket	BA 9 s
Lamp	filament lamp

Electrical characteristics

Voltage limit max.	250 V
Power limit max.	2 W

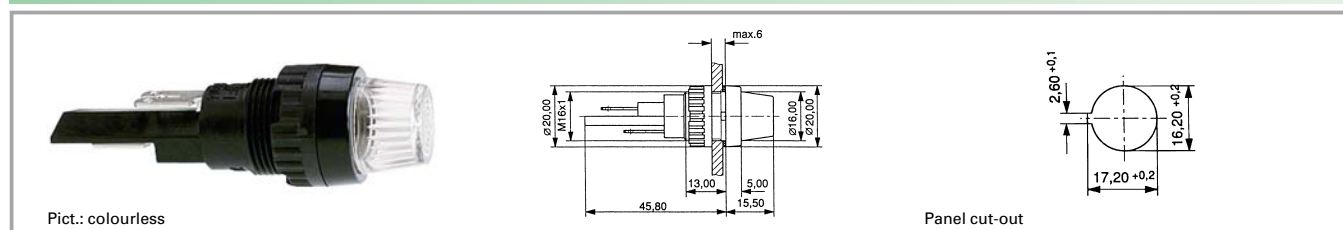
Other specifications

Degree of protection from front side	see order block
Weight	10 g
Approvals	SEV at 2 W

Accessories Signal lamps with lamp socket BA 9s (MBC/MCC), 16.2 mm

With Socket	Description	Photo	Order no.	Page
	Protective sleeve for terminals made of Buna N (NBR)		5.52.011.027/0100	
	Fixing spanner M 15, M 16		5.58.002.019/0105	5 - 23

Signal lamps with lamp socket BA 9s (MBC/MCC), 16.2 mm, round lens



Voltage limit max.	Power limit max.	Degree of protection from front side	Colour of lens	Order no. complete	Order no. single parts	
					Housing	Lens
250 V	2 W	IP40	transparent colourless	1.63.004.001/1002	1.63.004.091/0000	5.49.205.013/1002
250 V	2 W	IP40	transparent red	1.63.004.001/1301	1.63.004.091/0000	5.49.205.013/1301
250 V	2 W	IP40	transparent yellow	1.63.004.001/1402	1.63.004.091/0000	5.49.205.013/1402
250 V	2 W	IP40	transparent green	1.63.004.001/1502	1.63.004.091/0000	5.49.205.013/1502

Technical data see page 3 - 38

Technical data lamps see chapter 5

Accessories:

Filament lamp, BA 9s base (MBC/MCC), 12 - 15 V: **1.90.060.132/0000**

Filament lamp, BA 9s base (MBC/MCC), 24 - 30 V: **1.90.060.133/0000**

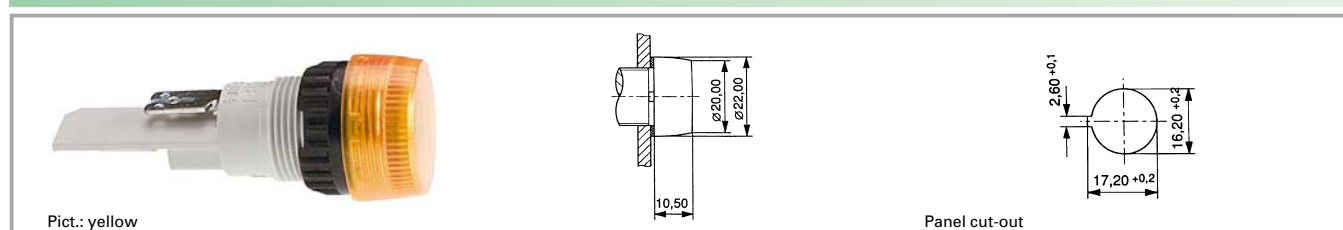
Filament lamp, BA 9s base (MBC/MCC), 110 - 130 V: **1.90.060.137/0000**

Neon lamp BA 9s (MBC/MCC), 220 V AC (red): **1.90.560.102/0000**

Neon lamp, BA 9s base (MBC/MCC), 220 V AC (green): **1.90.560.104/0000**

3

Signal lamps with lamp socket BA 9s (MBC/MCC), 16.2 mm, round lens



Voltage limit max.	Power limit max.	Degree of protection from front side	Colour of lens	Order no. complete	Order no. single parts	
					Housing	Lens
250 V	2 W	IP65	transparent colourless	1.63.004.010/1002	1.63.004.100/0000	5.49.227.007/1002
250 V	2 W	IP65	transparent red	1.63.004.010/1301	1.63.004.100/0000	5.49.227.007/1301
250 V	2 W	IP65	transparent yellow	1.63.004.010/1402	1.63.004.100/0000	5.49.227.007/1402
250 V	2 W	IP65	transparent green	1.63.004.010/1502	1.63.004.100/0000	5.49.227.007/1502

Technical data see page 3 - 38

Technical data lamps see chapter 5

Accessories:

Filament lamp, BA 9s base (MBC/MCC), 12 - 15 V: **1.90.060.003/0000**

Filament lamp, BA 9s base (MBC/MCC), 24 - 30 V: **1.90.060.014/0000**

Neon lamp BA 9s (MBC/MCC), 220 V AC: **1.90.560.002/0000**

With
Socket

Signal lamps with lamp socket E 10 (MES), 16.2 mm



Technical data

General information

Form of lens	round
Colour of lens	see order block
Diameter of collar	20 mm

Dimensions

Overall height	see order block
Mounting depth	see order block
Mounting hole	16.2 mm

Mechanical design

Mounting	ring nut
Terminals	see order block
Lamp socket	E 10
Lamp	filament lamp

Electrical characteristics

Voltage limit max.	250 V
Power limit max.	2 W

Other specifications

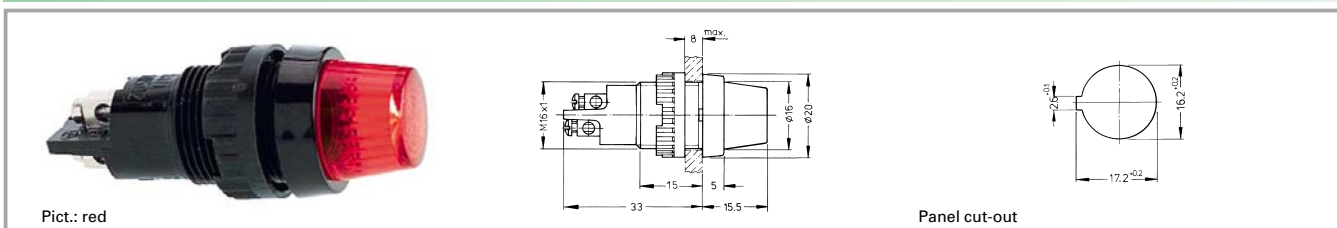
Degree of protection from front side	IP40
Weight	11 g
Approvals at 2W (T=°C)	VDE

Accessories Signal lamps with lamp socket E 10 (MES), 16.2 mm

Description	Photo	Order no.	Page
Filament lamp, E 10 (MES) base, 24 - 30 V		1.90.010.033/0000	5 - 11
Filament lamp, E 10 (MES) base, 110 - 130 V		1.90.010.037/0000	5 - 11
Protective sleeve for terminals		5.52.011.026/0100	
Fixing spanner M 15, M 16		5.58.002.019/0105	5 - 23

With
Socket

Signal lamps with lamp socket E 10 (MES), 16.2 mm, round lens



Voltage limit max.	Power limit max.	Terminals	Colour of lens	Order no. complete	Order no. single parts	
					Housing	Lens
250 V	2 W	screw terminals nickel-plated	transparent colourless	1.60.502.102/1002	1.60.502.091/0000	5.49.205.013/1002
250 V	2 W	screw terminals nickel-plated	transparent red	1.60.502.102/1301	1.60.502.091/0000	5.49.205.013/1301
250 V	2 W	screw terminals nickel-plated	transparent yellow	1.60.502.102/1402	1.60.502.091/0000	5.49.205.013/1402
250 V	2 W	screw terminals nickel-plated	transparent green	1.60.502.102/1502	1.60.502.091/0000	5.49.205.013/1502
250 V	2 W	screw terminals nickel-plated	transparent blue	1.60.502.102/1601	1.60.502.091/0000	5.49.205.013/1601

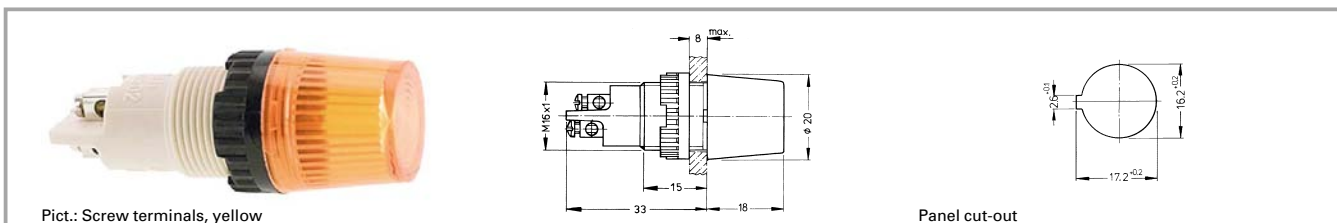
Technical data see page 3 - 40

Approval: VDE, SEV T70°C.

Versions with 2.8 x 0.8 quick-connect terminals available on request.

3

Signal lamps with lamp socket E 10 (MES), 16.2 mm, round lens



Voltage limit max.	Power limit max.	Terminals	Colour of lens	Order no. complete	Order no. single parts	
					Housing	Lens
250 V	2 W	screw terminals nickel-plated	transparent colourless	1.60.502.001/1002	1.60.502.099/0000	5.49.227.004/1002
250 V	2 W	screw terminals nickel-plated	transparent red	1.60.502.001/1301	1.60.502.099/0000	5.49.227.004/1301
250 V	2 W	screw terminals nickel-plated	transparent yellow	1.60.502.001/1402	1.60.502.099/0000	5.49.227.004/1402
250 V	2 W	screw terminals nickel-plated	transparent green	1.60.502.001/1502	1.60.502.099/0000	5.49.227.004/1502
250 V	2 W	screw terminals nickel-plated	transparent blue	1.60.502.001/1601	1.60.502.099/0000	5.49.227.004/1601

Technical data see page 3 - 40

Approval: VDE, SEV T70°C.

With
Socket

The technical drawing illustrates the LED indicator light from three perspectives:

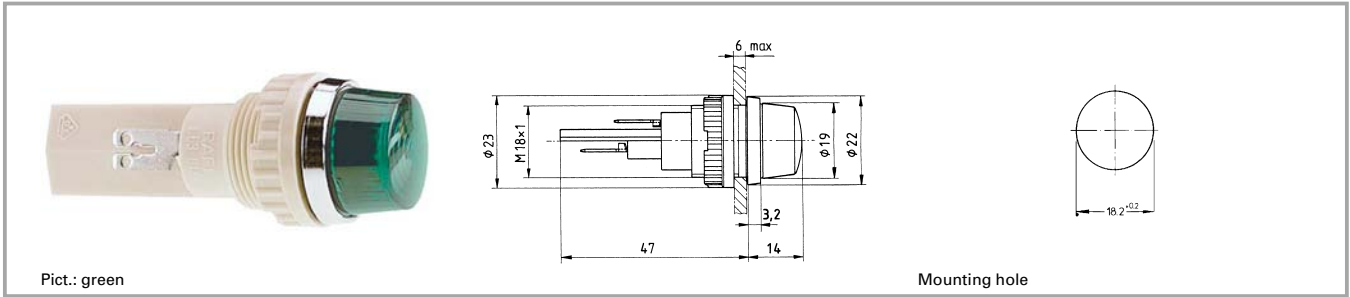
- Perspective View (Left):** Shows the physical component with a white body, a black knurled ring, and an orange lens. The text "Pict.: Screw terminals, yellow" is located below this view.
- Side View (Middle):** A cross-sectional drawing showing internal components and dimensions:
 - Threaded section: M6 x 1
 - Total length: 41.5
 - Distance from base to start of thread: 10
 - Base diameter: $\varnothing 20$
 - Base thickness: 7
 - Maximum height of the lens: max.
- Panel Cut-out View (Right):** A top-down view of the circular lens with dimensions:
 - Outer diameter: $\varnothing 16.2$
 - Inner diameter: $\varnothing 17.2$
 - Mounting hole diameter: $\varnothing 2.5$

3

Approval: VDE, SEV T70°C.

Signal lamps

Signal lamps with lamp socket BA 9s (MBC/MCC), 18.2 mm



Technical data

General information

Form of lens round
Colour of lens see order block
Diameter of collar 22 mm

Dimensions

Overall height 14 mm
Mounting depth 47 mm
Mounting hole 18.2 mm

Mechanical design

Mounting ring nut
Terminals quick connector 6.3 x 0.8 /
2 x 2.8 x 0.8 tin plated
Lamp socket BA 9 s
Lamp filament lamp

Electrical characteristics

Voltage limit max. 250 V
Power limit max. 2 W

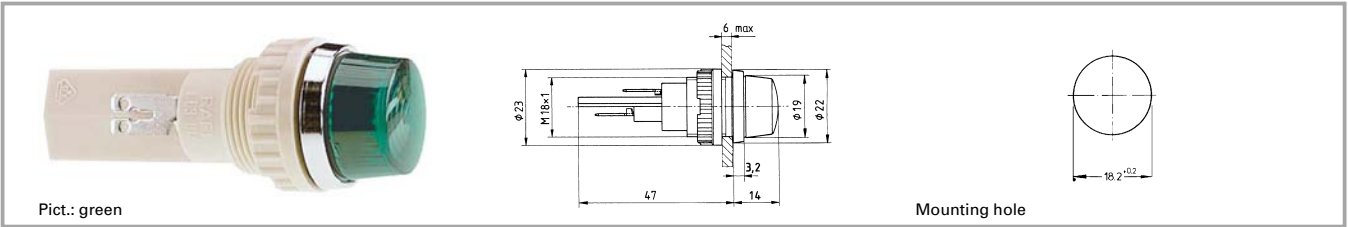
Other specifications

Degree of protection from front side IP65
Weight 22 g
Approvals VDE T120°C / 2 W

Accessories Signal lamps with lamp socket BA 9s (MBC/MCC), 18.2 mm

With Socket	Description	Photo	Order no.	Page
	Filament lamp, BA 9s base (MBC/MCC), 12 - 15 V		1.90.060.132/0000	5 - 8
	Filament lamp, BA 9s base (MBC/MCC), 24 - 30 V		1.90.060.133/0000	5 - 8
	Filament lamp, BA 9s base (MBC/MCC), 110 - 130 V		1.90.060.137/0000	5 - 8
	Protective sleeve for terminals made of Buna N (NBR)		5.52.011.027/0100	

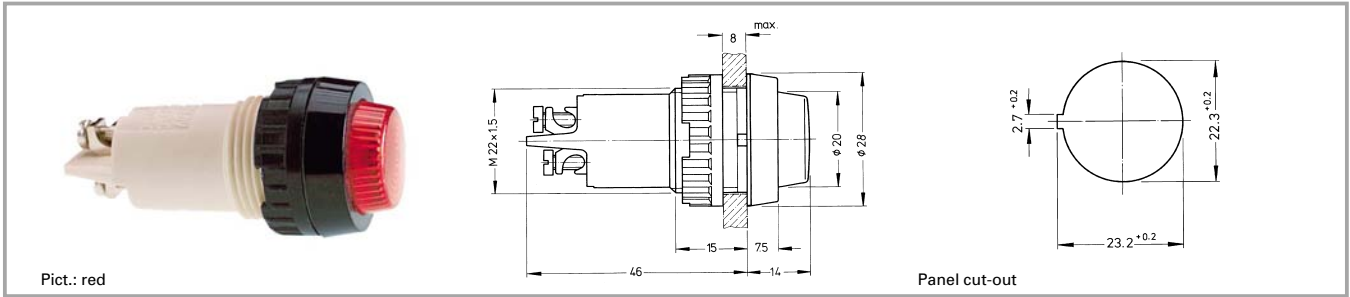
Signal lamps with lamp socket BA 9s (MBC/MCC), 18.2 mm, round lens



Voltage limit max.	Power limit max.	Lamp	Colour of lens	Order no. complete	Order no. single parts	
					Housing	Lens
250 V	2 W	filament lamp	transparent colourless	1.63.018.001/1002	1.63.018.091/0000	5.49.205.018/1002
250 V	2 W	filament lamp	transparent red	1.63.018.001/1301	1.63.018.091/0000	5.49.205.018/1301
250 V	2 W	filament lamp	transparent yellow	1.63.018.001/1402	1.63.018.091/0000	5.49.205.018/1402
250 V	2 W	filament lamp	transparent green	1.63.018.001/1502	1.63.018.091/0000	5.49.205.018/1502

Technical data see page 3 - 44

Signal lamps with lamp socket E 14, 22.3 mm



Technical data

General information

Form of lens	round
Colour of lens	see order block
Diameter of collar	28 mm

Dimensions

Overall height	14 mm
Mounting depth	46 mm
Mounting hole	22.3 mm

Mechanical design

Mounting	ring nut
Terminals	see order block
Lamp socket	E 14
Lamp	filament lamp

Electrical characteristics

Voltage limit max.	250 V
Power limit max.	2 W

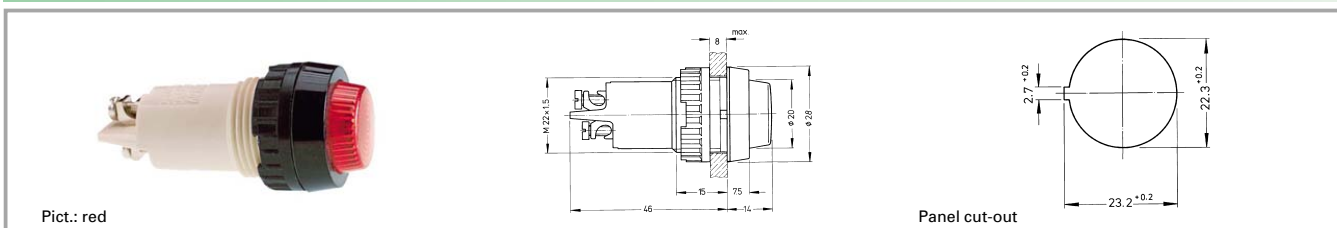
Other specifications

Degree of protection from front side	see order block
Weight	21 g
Approvals 1W (T100°C)	VDE
Approvals 2W (T85°C)	VDE, DEMKO, NEMKO

Accessories Signal lamps with lamp socket E 14, 22.3 mm

Description	Photo	Order no.	Page
Filament lamp, E 14 base, 24 - 30 V		1.90.020.033/0000	5 - 12
Sealing ring for IP65		5.30.075.010/0100	5 - 27
Protection against contact to VBG 4		5.50.240.063/0209	5 - 28
Protective sleeve for terminals made of Buna N (NBR)		5.52.011.029/0100	
Fixing spanner M 20, M 22, for ring nut		5.58.002.018/0105	5 - 23

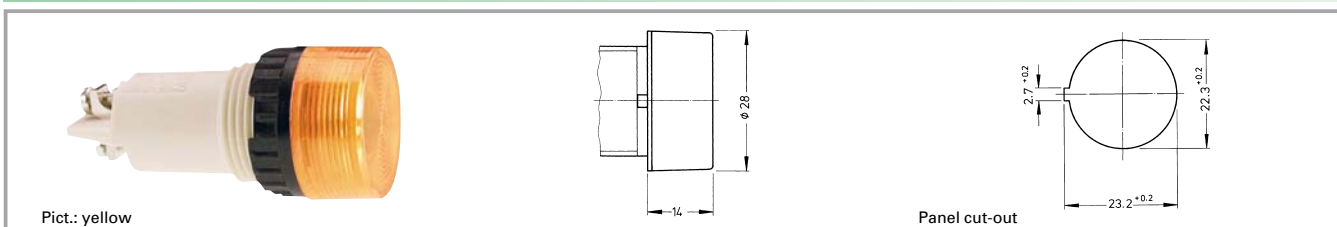
Signal lamps with lamp socket E 14, IP40, 22.3 mm



Voltage limit max.	Degree of protection from front side	Terminals	Colour of lens	Order no. complete	Order no. single parts	
					Housing	Lens
250 V	IP40	screw terminals brass nickel-plated	transparent colourless	1.61.012.011/1002	1.61.012.099/0000	5.00.350.726/1002
250 V	IP40	screw terminals brass nickel-plated	transparent red	1.61.012.011/1301	1.61.012.099/0000	5.00.350.726/1301
250 V	IP40	screw terminals brass nickel-plated	transparent yellow	1.61.012.011/1402	1.61.012.099/0000	5.00.350.726/1402
250 V	IP40	screw terminals brass nickel-plated	transparent green	1.61.012.011/1502	1.61.012.099/0000	5.00.350.726/1502

Technical data see page 3 - 46

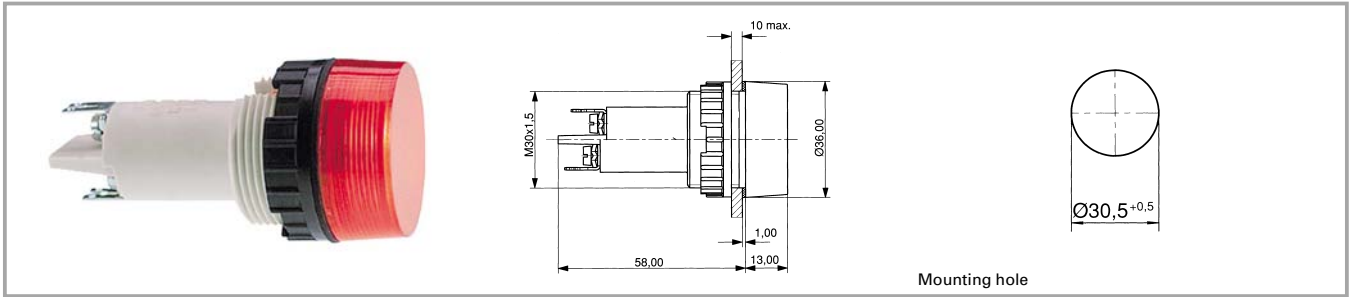
Signal lamps with lamp socket E 14, 22.3 mm, screw-on lens, IP40



Voltage limit max.	Degree of protection from front side	Terminals	Colour of lens	Order no. complete	Order no. single parts	
					Housing	Lens
250 V	IP40	screw terminals brass nickel-plated	transparent colourless	1.61.012.061/1002	1.61.012.099/0000	5.49.229.006/1002
250 V	IP40	screw terminals brass nickel-plated	transparent red	1.61.012.061/1301	1.61.012.099/0000	5.49.229.006/1301
250 V	IP40	screw terminals brass nickel-plated	transparent yellow	1.61.012.061/1402	1.61.012.099/0000	5.49.229.006/1402
250 V	IP40	screw terminals brass nickel-plated	transparent green	1.61.012.061/1502	1.61.012.099/0000	5.49.229.006/1502

Technical data see page 3 - 46

Signal lamps with lamp socket E 14, 30.5 mm



Technical data

General information

Form of lens round
Colour of lens see order block
Diameter of collar 36 mm

Dimensions

Overall height see order block
Mounting depth 58 mm
Mounting hole 30.5 mm

Mechanical design

Mounting ring nut
Terminals clamp + quick connector for 2 x 2.8 x 0.8 mm
Lamp socket E 14
Lamp filament lamp

Electrical characteristics

Voltage limit max. 250 V
Power limit max. 5 W

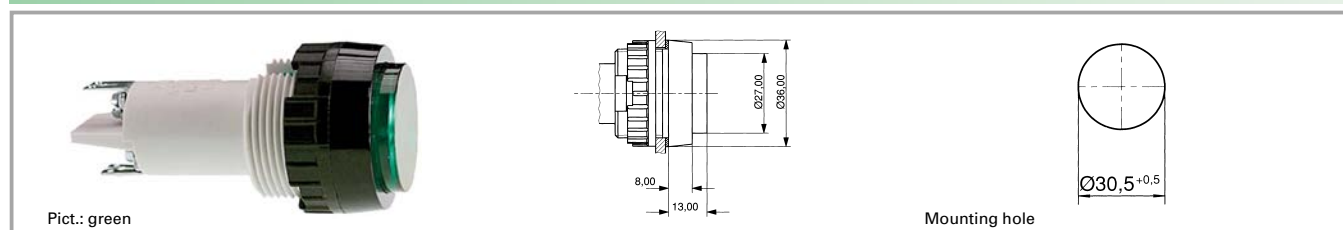
Other specifications

Degree of protection from front side see order block
Weight 40 g

Accessories Signal lamps with lamp socket E 14, 30.5 mm

With Socket	Description	Photo	Order no.	Page
	Protection against contact to VBG 5		5.50.240.065/0200	5 - 28
	Protective sleeve for terminals		5.52.011.031/0100	
	Fixing spanner M 25, M 30		5.58.002.020/0105	5 - 23

Signal lamps with lamp socket E 14, IP40, 30.5 mm



Voltage limit max.	Power limit max.	Degree of protection from front side	Colour of lens	Order no. complete	Order no. single parts	
					Housing	Lens
250 V	5 W	IP40	transparent colourless	1.61.021.004/1002	1.61.021.099/0000	5.00.350.013/1002
250 V	5 W	IP40	transparent red	1.61.021.004/1301	1.61.021.099/0000	5.00.350.013/1301
250 V	5 W	IP40	transparent yellow	1.61.021.004/1402	1.61.021.099/0000	5.00.350.013/1402
250 V	5 W	IP40	transparent green	1.61.021.004/1502	1.61.021.099/0000	5.00.350.013/1502

Technical data see page 3 - 48

Technical data lamps see chapter 5

Accessories:

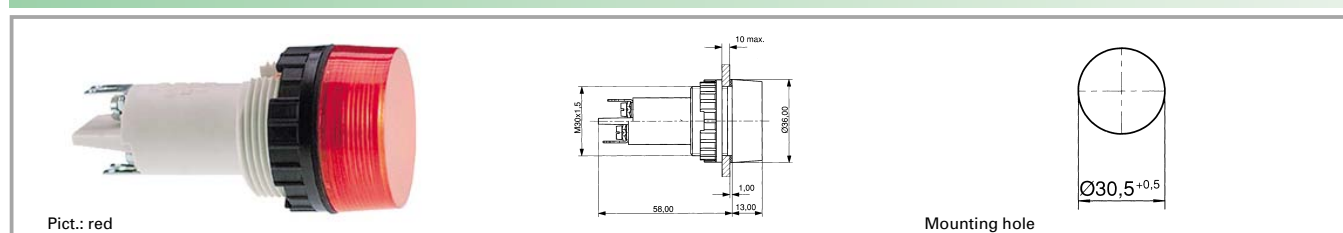
Filament lamp, E 14 base, 24 - 30 V: **1.90.020.033/0000**

Filament lamp, E 14 base, 24 V: **1.90.020.053/0000**

Filament lamp, E 14 base, 220 - 260 V: **1.90.020.061/0000**

Single-wire screw terminal with clamp: 2 x 0.75 to 2.5 mm², stranded core with wire end sleeve: 2 x 0.75 to 1.5 mm², quick-connect terminal suitable for 2 x 2.8 x 0.8 tin-plated for soldering.

Signal lamps with lamp socket E 14, IP40, 30.5 mm



Voltage limit max.	Power limit max.	Degree of protection from front side	Colour of lens	Order no. complete	Order no. single parts	
					Housing	Lens
250 V	5 W	IP40	transparent colourless	1.61.021.001/1002	1.61.021.099/0000	5.49.233.005/1002
250 V	5 W	IP40	transparent red	1.61.021.001/1301	1.61.021.099/0000	5.49.233.005/1301
250 V	5 W	IP40	transparent yellow	1.61.021.001/1402	1.61.021.099/0000	5.49.233.005/1402
250 V	5 W	IP40	transparent green	1.61.021.001/1502	1.61.021.099/0000	5.49.233.005/1502

Technical data see page 3 - 48

Technical data lamps see chapter 5

Accessories:

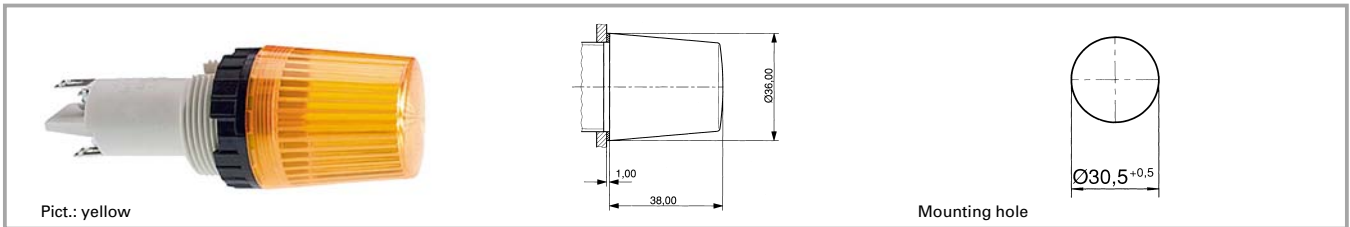
Filament lamp, E 14 base, 24 - 30 V: **1.90.020.033/0000**

Filament lamp, E 14 base, 24 V: **1.90.020.053/0000**

Filament lamp, E 14 base, 220 - 260 V: **1.90.020.061/0000**

Single-wire screw terminal with clamp: 2 x 0.75 to 2.5 mm², stranded core with wire end sleeve: 2 x 0.75 to 1.5 mm², quick-connect terminal suitable for 2 x 2.8 x 0.8 tin-plated for soldering.

Signal lamps with lamp socket E 14, IP40, 30.5 mm



Voltage limit max.	Power limit max.	Degree of protection from front side	Colour of lens	Order no. complete	Order no. single parts	
					Housing	Lens
250 V	5 W	IP40	transparent colourless	1.61.021.011/1002	1.61.021.099/0000	5.49.233.008/1002
250 V	5 W	IP40	transparent red	1.61.021.011/1301	1.61.021.099/0000	5.49.233.008/1301
250 V	5 W	IP40	transparent yellow	1.61.021.011/1402	1.61.021.099/0000	5.49.233.008/1402
250 V	5 W	IP40	transparent green	1.61.021.011/1502	1.61.021.099/0000	5.49.233.008/1502

Technical data see page 3 - 48

Technical data lamps see chapter 5

Accessories:

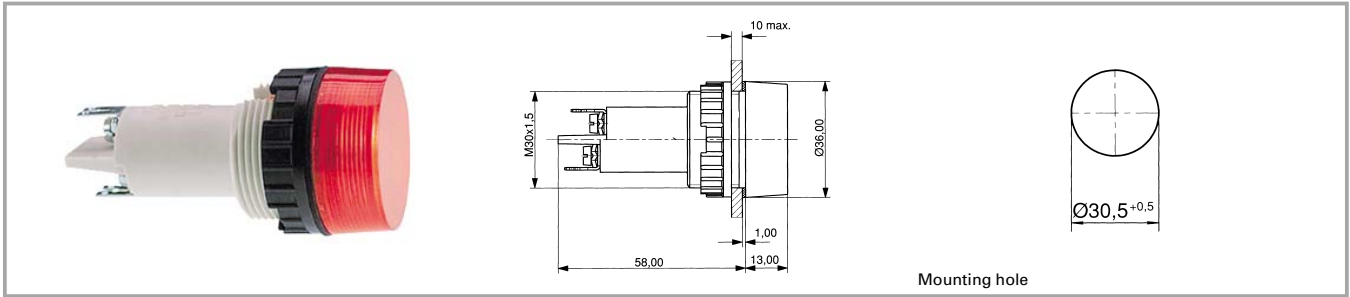
Filament lamp, E 14 base, 24 - 30 V: **1.90.020.105/0000**

Filament lamp, E 14 base, 220 - 260 V: **1.90.020.115/0000**

Single-wire screw terminal with clamp: 2 x 0.75 to 2.5 mm², stranded core with wire end sleeve: 2 x 0.75 to 1.5 mm², quick-connect terminal suitable for 2 x 2.8 x 0.8 tin-plated for soldering.

With
Socket

Signal lamps with lamp socket BA 15d, 30.5 mm



Technical data

General information

Form of lens round
Colour of lens see order block
Diameter of collar 36 mm

Dimensions

Overall height see order block
Mounting depth 58 mm
Mounting hole 30.5 mm

Mechanical design

Mounting ring nut
Terminals clamp + quick connector for 2 x 2.8 x 0.8 mm
Lamp socket BA 15 d
Lamp filament lamp




Electrical characteristics

Voltage limit max. 250 V
Power limit max. 5 W

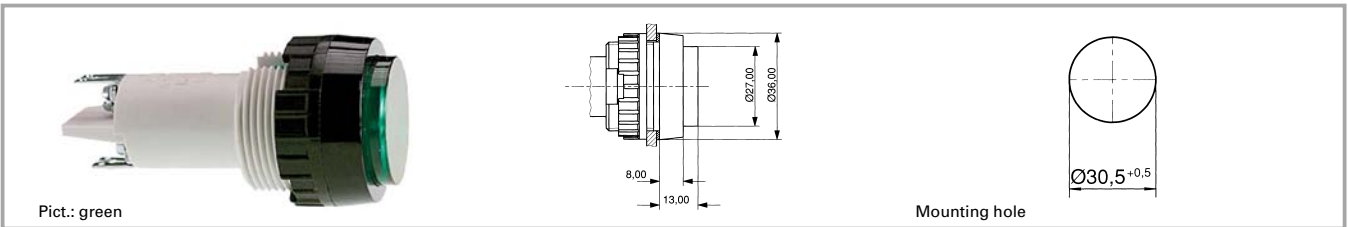
Other specifications

Degree of protection from front side see order block
Weight 40 g

Accessories Signal lamps with lamp socket BA 15d, 30.5 mm

With Socket	Description	Photo	Order no.	Page
	Protection against contact to VBG 5		5.50.240.065/0200	5 - 28
	Protective sleeve		5.52.011.031/0100	
	Fixing spanner M 25, M 30		5.58.002.020/0105	5 - 23

Signal lamps with lamp socket BA 15d, IP40, 30.5 mm



Voltage limit max.	Power limit max.	Degree of protection from front side	Colour of lens	Order no. complete	Order no. single parts	
					Housing	Lens
250 V	5 W	IP40	transparent colourless	1.63.521.004/1002	1.63.521.099/0000	5.00.350.013/1002
250 V	5 W	IP40	transparent red	1.63.521.004/1301	1.63.521.099/0000	5.00.350.013/1301
250 V	5 W	IP40	transparent yellow	1.63.521.004/1402	1.63.521.099/0000	5.00.350.013/1402
250 V	5 W	IP40	transparent green	1.63.521.004/1502	1.63.521.099/0000	5.00.350.013/1502

Technical data see page 3 - 52

Technical data lamps see chapter 5

Accessories:

Filament lamp, BA 15d base, 12 - 15 V: **1.90.070.003/0000**

Filament lamp, BA 15d base, 24 - 30 V: **1.90.070.004/0000**

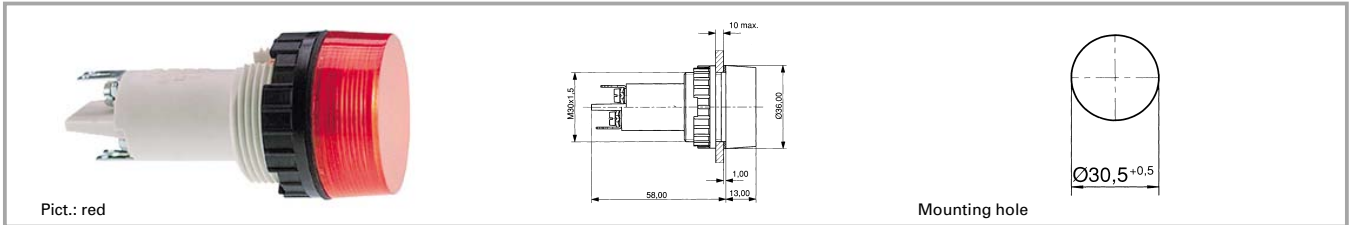
Filament lamp, BA 15d base, 24 V: **1.90.070.053/0000**

Filament lamp, BA 15d base, 220 - 260 V: **1.90.070.061/0000**

Single-wire screw terminal with clamp: 2 x 0.75 to 2.5 mm², stranded core with wire end sleeve: 2 x 0.75 to 1.5 mm², quick-connect terminal suitable for 6.8 x 0.8 mm / 2 x 2.8 x 0.8 mm, tin-plated for soldering.

Technical data see page 3 - 52

Signal lamps with lamp socket BA 15d, IP40, 30.5 mm



Voltage limit max.	Power limit max.	Degree of protection from front side	Colour of lens	Order no. complete	Order no. single parts	
					Housing	Lens
250 V	5 W	IP40	transparent colourless	1.63.521.001/1002	1.63.521.099/0000	5.49.233.005/1002
250 V	5 W	IP40	transparent red	1.63.521.001/1301	1.63.521.099/0000	5.49.233.005/1301
250 V	5 W	IP40	transparent yellow	1.63.521.001/1402	1.63.521.099/0000	5.49.233.005/1402
250 V	5 W	IP40	transparent green	1.63.521.001/1502	1.63.521.099/0000	5.49.233.005/1502

Technical data see page 3 - 52

Technical data lamps see chapter 5

Accessories:

Filament lamp, BA 15d base, 12 - 15 V: **1.90.070.003/0000**

Filament lamp, BA 15d base, 24 - 30 V: **1.90.070.004/0000**

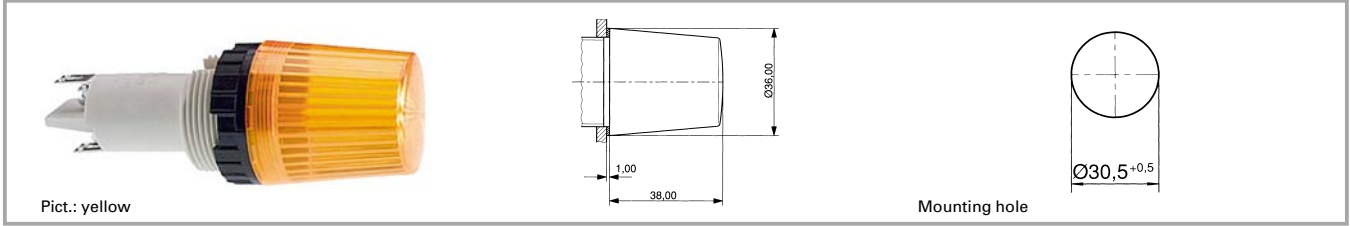
Filament lamp, BA 15d base, 24 V: **1.90.070.053/0000**

Filament lamp, BA 15d base, 220 - 260 V: **1.90.070.061/0000**

Single-wire screw terminal with clamp: 2 x 0.75 to 2.5 mm², stranded core with wire end sleeve: 2 x 0.75 to 1.5 mm², quick-connect terminal suitable for 6.8 x 0.8 mm / 2 x 2.8 x 0.8 mm, tin-plated for soldering.

3

Signal lamps with lamp socket BA 15d, IP40, 30.5 mm



Voltage limit max.	Power limit max.	Degree of protection from front side	Colour of lens	Order no. complete	Order no. single parts	
					Housing	Lens
250 V	5 W	IP40	transparent colourless	1.63.521.011/1002	1.63.521.099/0000	5.49.233.008/1002
250 V	5 W	IP40	transparent red	1.63.521.011/1301	1.63.521.099/0000	5.49.233.008/1301
250 V	5 W	IP40	transparent yellow	1.63.521.011/1402	1.63.521.099/0000	5.49.233.008/1402
250 V	5 W	IP40	transparent green	1.63.521.011/1502	1.63.521.099/0000	5.49.233.008/1502

Technical data see page 3 - 52

Technical data lamps see chapter 5

Accessories:

Filament lamp, BA 15d base, 24 - 30 V: **1.90.070.105/0000**

Filament lamp, BA 15d base, 220 - 260 V: **1.90.070.109/0000**

Single-wire screw terminal with clamp: 2 x 0.75 to 2.5 mm², stranded core with wire end sleeve: 2 x 0.75 to 1.5 mm², quick-connect terminal suitable for 6.8 x 0.8 mm / 2 x 2.8 x 0.8 mm, tin-plated for soldering.

With
Socket